

The Small Cruise Ship Collection

www.small-cruise-ships.com

small-cruise-ships.com

info@small-cruise-ships.com

WILD, WOOLLY AND WOW ALASKA CRUISE

Join fellow adventurers on the most active back country itinerary that UnCruise offers. See areas that no other boats visit, and stretch your legs and imagination in all new areas. Explore parts of Glacier Bay National Park rarely seen by visitors as we explore the "Outback" Hike and bike through Chichagof Island - UnCruise has the only permits in this area Learn what it's like to live and work in the wild country of Alaska All day kayak and "yak-and-whack" opportunities Full days - from morning birding to evening skiff tours and kayaks to an evening campfire ashore Wildlife search - Humpback, orca, seals, bears, moose, puffins and other sea birds LeConte and Baird Glaciers Opportunities to hike, bike, kayak, paddle board, skiff, and bushwhack, all in one week Access to South Baranof Wilderness, rarely visited Get on land at with an Ideal Cove hike



ITINERARY

DAY 1 Juneau Embarkation

Board the Legacy just in time for a welcome cocktail or glass of champagne before dinner. The captain and crew will introduce themselves and provide an overview of the adventure that awaits this week! (D)

DAY 2 Robert & Crow Islands

It's a perfect day to start the adventure! After a warm filling breakfast, time to get out there. Take to the water in a skiff tour or take a kayak 101 class. Follow an experienced and engaging

The Small Cruise Ship Collection

www.small-cruise-ships.com

01432 507 280 (within UK)

info@small-cruise-ships.com | small-cruise-ships.com



The Small Cruise Ship Collection

www.small-cruise-ships.com

small-cruise-ships.com

info@small-cruise-ships.com

guide through a forest hike. This afternoon, take your place on the bow as the captain and crew take you on a whale watching cruise. (BLD)

DAY 3 LeConte Glacier & Ideal Cove

Today's timing of activities is entirely controlled by the rise and fall of the tide. We may visit the Glacier early or late. LeConte Glacier is the southernmost tidewater glacier in the northern hemisphere. The shallow current-filled entrance requires us to enter near slack water. If the tide is early, you may hear ice against the hull of the Legacy as you wake up. We will also visit Ideal Cove today and take advantage of trails and if the timing is right, an evening campfire ashore.(BLD)

DAY 4 Cascade Creek & Baird Glacier

Wake near Cascade Creek in Thomas Bay. This bay is the quintessential playground for our guests and crew. Long flat hikes, steep elevation climbs, calm kayaking, and hikes to a glacial lake with the mighty Baird Glacier still calving ice into the lake may all be options today. Depending on tides, we may start the day near Cascade Creek or at Scenery Cove near Baird Glacier. Regardless, after lunch the boat will move to the opposite end of Thomas Bay for more adventures. This is an epic day for adventurers. Evening skiff tours and kayaks take in the pre dark hours when the sounds of the wilds beckon. (BLD)

DAY 5 Patterson & Gut Bay Wilderness

Join us for an early riser breakfast as we enter Patterson Bay! One of the most scenic areas in SE Alaska, Patterson is a deep narrow bay hemmed in mountains. We will drop off all day kayakers and early morning skiff tours and begin our day. Soon after, the ship will go on a slow meander of South Baranof Wilderness Area including Deep Cove, Port Walter, Misty Cove and eventually reach the southern extent of this primitive area. Activities will be more water-based today, with some hikes and whale watching. No other small ships visit this area. Weather permitting, this is an ideal area for snorkeling. Good chance to see Humpback or Orca whales. Alaska fishermen troll this area for prized King Salmon. Keep your camera at the ready today! (BLD)

DAY 6 Corner Bay

Corner Bay is our playground for the day. Chichagof Island is known for its high population of Brown Bears with multiple trails and abandoned Forest Service roads that make for ease of hiking to lakes and rivers. Full range of activities will be available with a lean towards hiking and for some, biking. This is the best opportunity for long hikes on trails and old Forest Service roads. (BLD)

DAY 7 Glacier Bay Outback

Wake up this morning in the Glacier Bay National Park "Outback". Today we will anchor in one of three outback areas of this epic national park. This will include one of the rarely visited areas of either Fern Harbor, Dundas Bay, or No Name

The Small Cruise Ship Collection
www.small-cruise-ships.com

01432 507 280 (within UK)

info@small-cruise-ships.com | small-cruise-ships.com



The Small Cruise
Ship Collection

www.small-cruise-ships.com

small-cruise-ships.com

info@small-cruise-ships.com

Cove near Excursion Inlet. The entire day is set aside for activity, starting with early morning kayak and birding departures into the park. Full activities may include kayaking, paddle boarding, skiff excursions, hiking, beach strolls and more. The likelihood of seeing any vessels or other people is very low. Meals may be aboard the Wilderness Legacy or packed as a picnic. This evening enjoy the Captain's Dinner and a slide show of the week's adventures put together by your crew. (BLD)

DAY 8 Juneau Disembarkation

Welcome back to Juneau. Enjoy your last breakfast aboard. Check every nook and cranny of your cabin for all of your things and say farewell to the crew as we disembark. (B)

Please Note:

Passport required (non USA citizens). Itineraries are guidelines; variations in itinerary and the order of days may occur to maximize your experience.

The Small Cruise
Ship Collection

www.small-cruise-ships.com

01432 507 280 (within UK)

info@small-cruise-ships.com | small-cruise-ships.com



The Small Cruise Ship Collection

www.small-cruise-ships.com

small-cruise-ships.com

info@small-cruise-ships.com

YOUR SHIP: WILDERNESS LEGACY

YOUR SHIP: Wilderness Legacy

VESSEL TYPE:

LENGTH:

PASSENGER CAPACITY:

BUILT/REFURBISHED:

The ambience aboard the 88-guest Wilderness Legacy emulates the old-world charm of an early turn-of-the-century coastal steamer. Exquisitely appointed with period decor, the vessel's carved wooden cabinetry, Grand Salon complete with a full bar and dance floor, Klondike Dining Room with wine bar, Pesky Barnacle Saloon, hot tub, sauna, fitness equipment, yoga classes, and massage suite are features accessible to all guests. Four decks are ready for guests' comfort and adventure. The bridge deck provides room for sunning, two hot tubs, and the open bridge, as well as the highest of the bow viewing areas wrapping around the front. The upper deck provides the middle bow viewing area. The lounge deck provides the luxurious indoor lounge and bar as well as the largest of the three bow viewing areas. Downstairs on the main deck guests enjoy gourmet meals in the elegant dining room. The Lounge is large with plenty of room for spotting wildlife, sharing photos, and playing chess - all with a cocktail or soda from the bar. The Dining Room features open seating at set times. Breakfast, lunch and dinner are served plated at table. Unlimited beverages, alcoholic and non, are included in the price of the cruise. Vegetarian options are always available. Dietary restrictions are happily

accommodated with advanced notice. Onboard Features: Custom made sea dragon kayak launch platform; bow-mounted underwater camera; kayaks, paddleboards, inflatable skiffs, hiking poles; on-deck hot tub; fitness equipment and yoga mats; DVD and book library. Legacy has an elevator. This elevator does not reach the bridge deck. While this makes her a comfortable choice for guests with mobility concerns, guests must still be able to embark and disembark via gangway and climb one flight of stairs. Explorer cabin 309 features a short ramp over the lip to get into the cabin and grab bars in the bathroom, but it is not ADA accessible. Staterooms There are six stateroom categories aboard the Wilderness Legacy: Master; Commander; Captain; Admiral; and Junior Commodore Suite, and Owner's Suite. Depending on the category, singles, doubles, triples, or quadruples can be accommodated. Common to all staterooms are: Flat-screen TV/DVD; iPod



The Small Cruise Ship Collection

www.small-cruise-ships.com

01432 507 280 (within UK)

info@small-cruise-ships.com | small-cruise-ships.com



The Small Cruise Ship Collection

www.small-cruise-ships.com



small-cruise-ships.com

info@small-cruise-ships.com

docking station.



The Small Cruise Ship Collection

www.small-cruise-ships.com

01432 507 280 (within UK)

info@small-cruise-ships.com | small-cruise-ships.com

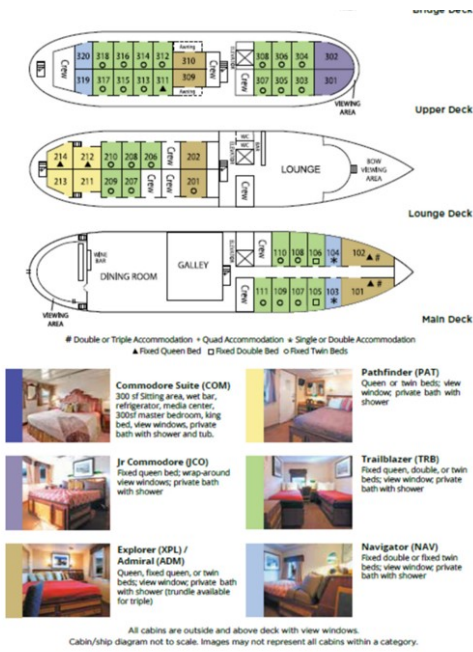
The Small Cruise Ship Collection

www.small-cruise-ships.com

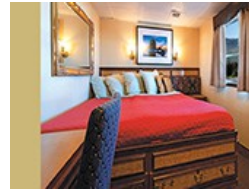
small-cruise-ships.com

info@small-cruise-ships.com

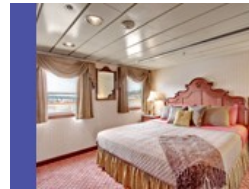
INSIDE YOUR SHIP



Admiral

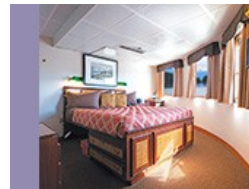


Commodore Suite



Jr Commodore Suite

Navigator



Pathfinder

Single Navigator





The Small Cruise Ship Collection

www.small-cruise-ships.com



small-cruise-ships.com

info@small-cruise-ships.com

PRICING

26-Apr-2025 to 03-May-2025

Trailblazer	£3773 GBP pp
Jr Commodore Suite	£5313 GBP pp
Commodore Suite	£6237 GBP pp
Pathfinder	£4158 GBP pp
Single Navigator	£5929 GBP pp
Admiral	£4620 GBP pp
Navigator	£3388 GBP pp

17-May-2025 to 24-May-2025

Trailblazer	£4543 GBP pp
Commodore Suite	£7700 GBP pp
Pathfinder	£5005 GBP pp
Admiral	£5621 GBP pp
Single Navigator	£7161 GBP pp
Jr Commodore Suite	£6468 GBP pp
Navigator	£4081 GBP pp

03-May-2025 to 10-May-2025

Admiral	£5082 GBP pp
Jr Commodore Suite	£5852 GBP pp
Pathfinder	£4543 GBP pp
Trailblazer	£4158 GBP pp
Single Navigator	£6468 GBP pp
Navigator	£3696 GBP pp
Commodore Suite	£6930 GBP pp

24-May-2025 to 31-May-2025

Navigator	£4158 GBP pp
Trailblazer	£4620 GBP pp
Commodore Suite	£7854 GBP pp
Admiral	£5698 GBP pp
Single Navigator	£7315 GBP pp
Jr Commodore Suite	£6545 GBP pp
Pathfinder	£5082 GBP pp

10-May-2025 to 17-May-2025

Commodore Suite	£7700 GBP pp
Admiral	£5621 GBP pp
Pathfinder	£5005 GBP pp
Trailblazer	£4543 GBP pp
Single Navigator	£7161 GBP pp
Navigator	£4081 GBP pp
Jr Commodore Suite	£6468 GBP pp



01432 507 280 (within UK)

info@small-cruise-ships.com | small-cruise-ships.com



The Small Cruise Ship Collection

www.small-cruise-ships.com



small-cruise-ships.com

info@small-cruise-ships.com

PRICING

31-May-2025 to 07-Jun-2025

Trailblazer	£4620 GBP pp
Jr Commodore Suite	£6545 GBP pp
Navigator	£4158 GBP pp
Single Navigator	£7315 GBP pp
Admiral	£5698 GBP pp
Commodore Suite	£7854 GBP pp
Pathfinder	£5082 GBP pp

21-Jun-2025 to 28-Jun-2025

Navigator	£4851 GBP pp
Single Navigator	£8547 GBP pp
Jr Commodore Suite	£7623 GBP pp
Commodore Suite	£9163 GBP pp
Pathfinder	£5929 GBP pp
Admiral	£6622 GBP pp
Trailblazer	£5390 GBP pp

07-Jun-2025 to 14-Jun-2025

Trailblazer	£5390 GBP pp
Navigator	£4851 GBP pp
Jr Commodore Suite	£7623 GBP pp
Admiral	£6622 GBP pp
Commodore Suite	£9163 GBP pp
Single Navigator	£8547 GBP pp
Pathfinder	£5929 GBP pp

28-Jun-2025 to 05-Jul-2025

Admiral	£6622 GBP pp
Navigator	£4851 GBP pp
Pathfinder	£5929 GBP pp
Single Navigator	£8547 GBP pp
Commodore Suite	£9163 GBP pp
Jr Commodore Suite	£7623 GBP pp
Trailblazer	£5390 GBP pp

14-Jun-2025 to 21-Jun-2025

Pathfinder	£5929 GBP pp
Admiral	£6622 GBP pp
Navigator	£4851 GBP pp
Jr Commodore Suite	£7623 GBP pp
Single Navigator	£8547 GBP pp
Commodore Suite	£9163 GBP pp
Trailblazer	£5390 GBP pp



The Small Cruise Ship Collection

www.small-cruise-ships.com



small-cruise-ships.com

info@small-cruise-ships.com

PRICING

05-Jul-2025 to 12-Jul-2025

Commodore Suite	£9163 GBP pp
Admiral	£6622 GBP pp
Pathfinder	£5929 GBP pp
Single Navigator	£8547 GBP pp
Navigator	£4851 GBP pp
Jr Commodore Suite	£7623 GBP pp
Trailblazer	£5390 GBP pp

26-Jul-2025 to 02-Aug-2025

Jr Commodore Suite	£7623 GBP pp
Navigator	£4851 GBP pp
Admiral	£6622 GBP pp
Single Navigator	£8547 GBP pp
Trailblazer	£5390 GBP pp
Pathfinder	£5929 GBP pp
Commodore Suite	£9163 GBP pp

12-Jul-2025 to 19-Jul-2025

Trailblazer	£5390 GBP pp
Navigator	£4851 GBP pp
Admiral	£6622 GBP pp
Commodore Suite	£9163 GBP pp
Single Navigator	£8547 GBP pp
Jr Commodore Suite	£7623 GBP pp
Pathfinder	£5929 GBP pp

02-Aug-2025 to 09-Aug-2025

Commodore Suite	£9163 GBP pp
Jr Commodore Suite	£7623 GBP pp
Admiral	£6622 GBP pp
Trailblazer	£5390 GBP pp
Navigator	£4851 GBP pp
Pathfinder	£5929 GBP pp
Single Navigator	£8547 GBP pp

19-Jul-2025 to 26-Jul-2025

Pathfinder	£5929 GBP pp
Jr Commodore Suite	£7623 GBP pp
Navigator	£4851 GBP pp
Commodore Suite	£9163 GBP pp
Trailblazer	£5390 GBP pp
Admiral	£6622 GBP pp
Single Navigator	£8547 GBP pp



01432 507 280 (within UK)

info@small-cruise-ships.com | small-cruise-ships.com



The Small Cruise Ship Collection

www.small-cruise-ships.com



small-cruise-ships.com

info@small-cruise-ships.com

PRICING

09-Aug-2025 to 16-Aug-2025

Pathfinder	£5929 GBP pp
Commodore Suite	£9163 GBP pp
Jr Commodore Suite	£7623 GBP pp
Single Navigator	£8547 GBP pp
Navigator	£4851 GBP pp
Admiral	£6622 GBP pp
Trailblazer	£5390 GBP pp

30-Aug-2025 to 06-Sep-2025

Trailblazer	£4620 GBP pp
Pathfinder	£5082 GBP pp
Navigator	£4158 GBP pp
Admiral	£5698 GBP pp
Jr Commodore Suite	£6545 GBP pp
Commodore Suite	£7854 GBP pp
Single Navigator	£7315 GBP pp

16-Aug-2025 to 23-Aug-2025

Navigator	£4851 GBP pp
Jr Commodore Suite	£7623 GBP pp
Pathfinder	£5929 GBP pp
Single Navigator	£8547 GBP pp
Trailblazer	£5390 GBP pp
Commodore Suite	£9163 GBP pp
Admiral	£6622 GBP pp

06-Sep-2025 to 13-Sep-2025

Pathfinder	£5005 GBP pp
Navigator	£4081 GBP pp
Jr Commodore Suite	£6468 GBP pp
Trailblazer	£4543 GBP pp
Single Navigator	£7161 GBP pp
Admiral	£5621 GBP pp
Commodore Suite	£7700 GBP pp

23-Aug-2025 to 30-Aug-2025

Jr Commodore Suite	£7623 GBP pp
Trailblazer	£5390 GBP pp
Commodore Suite	£9163 GBP pp
Admiral	£6622 GBP pp
Single Navigator	£8547 GBP pp
Pathfinder	£5929 GBP pp
Navigator	£4851 GBP pp



01432 507 280 (within UK)

info@small-cruise-ships.com | small-cruise-ships.com



The Small Cruise Ship Collection

www.small-cruise-ships.com



small-cruise-ships.com

info@small-cruise-ships.com

PRICING

13-Sep-2025 to 20-Sep-2025

Jr Commodore Suite	£5852 GBP pp
Trailblazer	£4158 GBP pp
Admiral	£5082 GBP pp
Navigator	£3696 GBP pp
Pathfinder	£4543 GBP pp
Commodore Suite	£6930 GBP pp
Single Navigator	£6468 GBP pp

ADDITIONAL CHARGES: Port taxes/fees 375 USD pp



01432 507 280 (within UK)

info@small-cruise-ships.com | small-cruise-ships.com