

The Small Cruise Ship Collection

www.small-cruise-ships.com

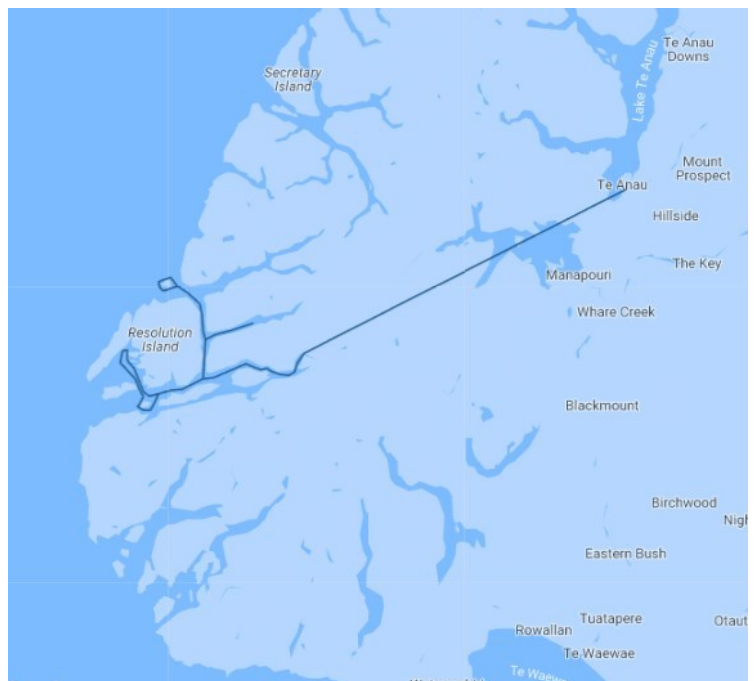
small-cruise-ships.com

info@small-cruise-ships.com

UNDISCOVERED DUSKY SOUND: CRUISING REMOTE FIORDLAND

Discover the primordial majesty of Fiordland on an unforgettable voyage cruising Acheron Passage, Breaksea and Dusky Sounds with New Zealand's pioneering small ship expedition cruise company Heritage Expeditions. Starting and concluding with a thrilling, scenic helicopterflight between Te Anau and Supper Cove, our 5-day voyage sees us exploring the sheltered waters, hidden coves, islands and astounding scenery of World Heritage Area Dusky Sound, one of Fiordland's largest fiords some 40-kilometres long and studded with more than 350 islands. Only accessible by sea, Dusky Sound is among the most isolated areas on New Zealand's mainland. Waterfalls, streams, rivers and fiords are enveloped with misty veils that come and go, revealing steep gradients of mountain peaks and sheltered valleys. However, it is this isolation that has ensured the pristine, epic beauty remains unspoiled and historic sites undisturbed. Rightly famous for its epic, grand scale scenery, untamed wilderness and unique wildlife including Bottlenose Dolphins, Fiordland Crested Penguins and New Zealand Fur Seals, Fiordland is also rich in natural history, geology and the location of several historical New Zealand firsts and important restoration and conservation projects which we plan to visit. Our luxurious 18-guest expedition yacht Heritage Explorer is perfect for navigating Fiordland's narrow waterways, fiords and island clusters off limits to larger vessels. We will also use our two tenders to explore further and make landings, visit historic sites and enjoy a range of walks. On board you will also find kayaks to explore at your leisure and fishing gear to perhaps catch the evening meal. Discover the calm waters of Dusky Sound in solitude and explore some of the most unique and wild parts of

Fiordland on this bucket



list voyage.

ITINERARY

Day 1: Te Anau/Supper Cove

Meet with your fellow expeditioners in Te Anau then take in the grand views and awe-inspiring scenery as you enjoy a spectacular helicopter transfer to Supper Cove at the very head of Dusky Sound (times and meeting point will be confirmed with your voyage documents). Your captain and expedition leader will be waiting to welcome you aboard Heritage Explorer and show

The Small Cruise Ship Collection

www.small-cruise-ships.com

01432 507 280 (within UK)

info@small-cruise-ships.com | small-cruise-ships.com



The Small Cruise Ship Collection

www.small-cruise-ships.com

small-cruise-ships.com

info@small-cruise-ships.com

you to your cabin. Settle into life on board before we set sail alongside Cooper, Long and Indian Islands before finding a suitable anchorage to enjoy your first evening aboard.

Day 2 & 3: Dusky Sound

After a quiet night aboard surrounded by the nature and wilderness of Fiordland we continue our explorations among some of the most majestic scenery in New Zealand. We have two days to explore, discover and experience the rich history, wilderness, wildlife and grand scale scenery of Fiordland's iconic Dusky Sound. Our voyage will see us visiting and exploring some of the most significant historical and conservation sites in New Zealand as well as marvelling at the grand scale scenery as we sail deep into the heart of Fiordland. During our time here we plan to walk in the footsteps of Captain Cook and astronomer William Wales at Astronomer's Point, the site of a temporary observatory in Pickersgill Harbour, where New Zealand became the most accurately located place on the globe when the Resolution was moored here in 1773. Our explorations also expect to visit predator-free Anchor Island, home to half of the world's population of Kakapo and Little Spotted Kiwi, and location of historic Luncheon Cove and a number of New Zealand firsts including New Zealand's first sealing gang, the building of New Zealand's first European homestead and first European designed ship, the 16-metre Providence built here and launched in 1795. On nearby Pigeon Island we will learn about the history of Richard Henry and his pioneering live transfer of birds to island refuges - an international first in wildlife conservation. While his attempts were unsuccessful due to stoats swimming over to the island, it is heartening to learn the island is now pest-free and a sanctuary for native birdlife, with Henry's vision fulfilled.

Day 4: Breaksea Sound & Acheron Passage

A navigation through Acheron Passage today, which separates Resolution Island from the mainland, is sure to be one of the highlights of our time in Fiordland. This iconic scenic waterway is an area where the resident Bottlenose Dolphins are often spotted. Our explorations here may include venturing into Wet Jacket Arm where the crew of Cook's Resolution ended up with wet jackets during their survey work. It is also the sight where moose were released, and last seen, in New Zealand. The extensive sheltered waters of scenic Breaksea Sound, initially scouted for sheep farming suitability by early settlers in the 1850s is also the location of Breaksea Island, an iconic site in New Zealand conservation history as one of the first large islands declared rat-free in 1988 and now home to many endangered species. This afternoon you might like to join the chefs fishing for tonight's dinner, or take the kayaks for a shoreline exploration.

Day 5: Supper Cove/Te Anau

This morning Heritage Explorer returns to Supper Cove where we enjoy a last opportunity to bask in the majesty of the fiords during breakfast before boarding your scenic helicopter transfer back to Te Anau. In case of unexpected delays, we ask you not to book any onward travel from Te Anau until after 1pm.

Please Note:

Itineraries are subject to change.

The Small Cruise Ship Collection

www.small-cruise-ships.com

01432 507 280 (within UK)

info@small-cruise-ships.com | small-cruise-ships.com



The Small Cruise Ship Collection

www.small-cruise-ships.com

small-cruise-ships.com

info@small-cruise-ships.com

YOUR SHIP: HERITAGE EXPLORER

YOUR SHIP: Heritage Explorer

VESSEL TYPE:

LENGTH:

PASSENGER CAPACITY:

BUILT/REFURBISHED:

New Zealand-built expedition yacht Heritage Explorer joins Heritage Expedition's small ship fleet creating new opportunities of discovery around the shores of New Zealand. Setting a new standard for discovery travel in New Zealand, Heritage Explorer combines the ultimate in comfort with unique itineraries and a personalised experience with a maximum of just 18 guests on board. Heritage Explorer is a 30-metre, 4-deck New Zealand flagged vessel built in 2004 by the renowned wooden boat building family Carey's Boatyard in Picton. It features a contemporary wood-finished interior, 10 well-appointed cabins across three decks, dining room boasting spectacular 180-degree panoramas and theatre capabilities; lounge and bar featuring a flight of inclusive regional New Zealand wines, beers and spirits; and a well-stocked local library. Outside, guests can enjoy plenty of covered space on the Bridge Deck, or ajourn to the Sun Deck perfect for wildlife spotting, sunrises and sunsets, or simply enjoying watch your voyage unfold. Kayaks and fishing equipment are available for use during the voyage, while two tenders allow for deeper exploration and the unforgettable wildlife encounters synonymous with all Heritage Expeditions adventures. As with as with our other vessels, Heritage Explorer

will have an open bridge policy and a full commercial kitchen helmed by a talented chef focused on highlighting local produce and any guest catches of the day, as well as an enthusiastic and passionate expedition team, and will be shipped by a New Zealand captain and crew. The expedition yacht features state-of-the-art technology to provide a comfortable expedition with high performance dual Scania 653 horsepower engines, bow thrusters, fin stabilisers, full air-conditioning, sound attenuated twin generators and a hydraulic aft ramp, while a comprehensive navigation package ensures the ultimate Kiwi adventure awaits all guests. Accommodation Details Royal: Located on the Bridge Deck, our Master Suite features a spacious bedroom with a queen-sized bed, ample storage with wardrobe and drawers, mirror and washbasin, private en suite, personal climate control, TV, PABX satellite telephone, window and French doors opening out on to the covered Bridge Deck. Salvin's: Located on the Lower Deck, Salvin's cabins have the option of either a double bed or two lower berths. Both feature ample storage with wardrobe and drawers, TV, PABX satellite telephone, private en suite and a picture porthole. Wandering: Located on the Lower Deck, Wandering cabins feature one lower single berth, ample storage with wardrobe and drawers, TV, PABX satellite telephone, private en suite and a porthole. Buller's: Located on the Lower Deck, the Buller's cabin features one bunk (one upper and one lower berth), ample storage with wardrobe and drawers, TV, PABX satellite telephone, private en suite and

The Small Cruise Ship Collection

www.small-cruise-ships.com

01432 507 280 (within UK)

info@small-cruise-ships.com | small-cruise-ships.com



a porthole.

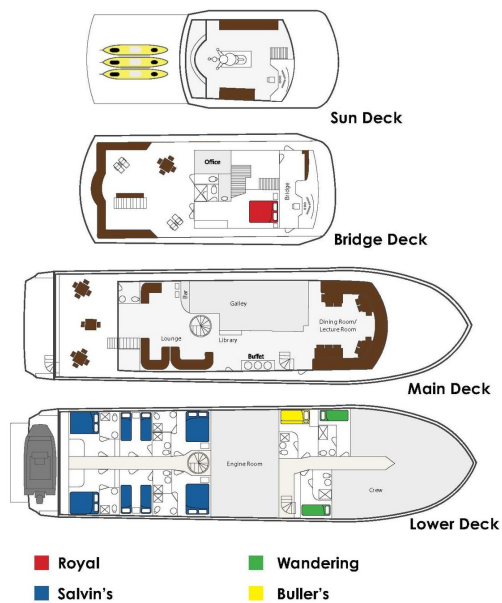
The Small Cruise Ship Collection

www.small-cruise-ships.com

small-cruise-ships.com

info@small-cruise-ships.com

INSIDE YOUR SHIP



Buller's



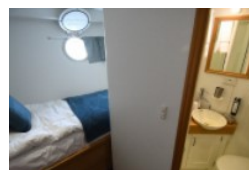
Royal



Salvin's



Wandering





The Small Cruise Ship Collection

www.small-cruise-ships.com

small-cruise-ships.com

info@small-cruise-ships.com

PRICING

22-Jan-2025 to 26-Jan-2025

Royal	£3249 GBP pp
Buller's	£2425 GBP pp
Salvin's	£2699 GBP pp
Wandering	£2835 GBP pp

26-Jan-2025 to 30-Jan-2025

Buller's	£2425 GBP pp
Wandering	£2835 GBP pp
Salvin's	£2699 GBP pp
Royal	£3249 GBP pp

30-Jan-2025 to 03-Feb-2025

Buller's	£2425 GBP pp
Salvin's	£2699 GBP pp
Royal	£3249 GBP pp
Wandering	£2835 GBP pp

28-Feb-2025 to 04-Mar-2025

Royal	£3249 GBP pp
Salvin's	£2699 GBP pp
Wandering	£2835 GBP pp
Buller's	£2425 GBP pp

04-Mar-2025 to 08-Mar-2025

Royal	£3249 GBP pp
Buller's	£2425 GBP pp
Salvin's	£2699 GBP pp
Wandering	£2835 GBP pp

31-Jul-2025 to 04-Aug-2025

Royal	£3249 GBP pp
Buller's	£2425 GBP pp
Salvin's	£2699 GBP pp
Wandering	£2835 GBP pp