



**The Small Cruise Ship Collection**  
[www.small-cruise-ships.com](http://www.small-cruise-ships.com)

[small-cruise-ships.com](http://small-cruise-ships.com)      [info@small-cruise-ships.com](mailto:info@small-cruise-ships.com)

## ULTIMATE ARCTIC VOYAGE - FROM SVALBARD TO JAN MAYEN TO ICELAND

Perfect for first-time visitors to the Arctic who are seeking lots of adventure, our Ultimate Arctic Voyage: From Svalbard to Jan Mayen to Iceland itinerary highlights three spectacular destinations near the top of the world. This journey provides adventurous guests with a taste of the incredible diversity of the Arctic, featuring wildlife, giant icebergs, towering mountains, historical sites, wide expanses of tundra and more. Your adventure begins in the remote Norwegian island of Spitsbergen, renowned for its stunning scenery and abundant, varied wildlife such as polar bears and walrus. From there, sail south across the Greenland Sea to the mysterious, volcanic Jan Mayen, a nature reserve so remote that few have ever been fortunate enough to explore this Arctic treasure. Your epic adventure culminates with a journey under the midnight sun to Reykjavik, where you can soak up Icelandic culture in a city that never sleeps.



### ITINERARY

**Day 1** Arrive in Helsinki, Finland  
 Your Arctic adventure begins in Helsinki, renowned for its extraordinary architecture and intriguing mix of eastern and western influences. If you arrive early, explore the many museums, galleries and restaurants, relax at a Finnish sauna or wander the vibrant Design District before retiring at your



## The Small Cruise Ship Collection

[www.small-cruise-ships.com](http://www.small-cruise-ships.com)

[small-cruise-ships.com](http://small-cruise-ships.com)

[info@small-cruise-ships.com](mailto:info@small-cruise-ships.com)

included hotel.

### Day 2 Fly to Longyearbyen, Svalbard & Embark

This morning, the group will transfer to the airport and board our private charter flight to Longyearbyen, Spitsbergen's largest settlement, as part of the transfer package. As you embark this afternoon, expect great views of the mountainous landscape that serves as a backdrop for this seaside town.

### Days 3 to 6 Exploring Spitsbergen

Exploring Spitsbergen, the largest island in the Norwegian Svalbard archipelago, rewards you with austere beauty and opportunities to spot its abundant wildlife. Here, you'll visit spectacular glacier fronts and tundra in full bloom, with walrus, polar bears and Svalbard reindeer amongst your possible wildlife sightings. Birders will be thrilled to see Arctic terns, skuas, Brünnich's guillemots, black-legged kittiwakes and ivory gulls. If conditions permit, you could sail within 10 degrees of the North Pole!

### Days 7 and 8 Cruising

While sailing south through the historic Greenland Sea toward Jan Mayen, your Expedition Team will keep you informed with presentations about the history and politics of the Arctic, its fascinating wildlife, geology, ecology and climate, and the incredible sights you will soon explore. On deck, you'll learn to identify seabirds "on the wing." The team will also keep a lookout for the whales that frequent the waters here.

### Day 9 Exploring Jan Mayen

North of the Arctic Circle, about 280 miles (450 km) east of Greenland and 340 miles (550 km) north of Iceland, the mysterious Jan Mayen rises from the depths of the North

Atlantic. Often shrouded in thick fog, the small mountainous island was declared a nature reserve in 2010 and is rarely visited, save for the 18 rotating personnel of the Norwegian military and Norwegian Meteorological Institute, who are the only inhabitants. Landing here will be dictated by the weather and sea. If conditions allow, as we approach, keep watch on deck as the spoon-shaped island's highest summit emerges. At 7,470 feet (2,277 meters) high, the breathtaking Beerenberg volcano features a symmetrical cone shape and impressive glaciers that spill into the sea. If we're fortunate, we may get a close-up view of the volcano and the stratified cliffs of the spectacular north coast as we Zodiac cruise along the coast of the island, searching for wildlife. Designated an Important Bird Area by BirdLife International for the large numbers of breeding seabirds, Jan Mayen supports colonies of northern fulmars, little auks, glaucous gulls, kittiwakes, and black and Brünnich's guillemots (thick-billed murre).

### Days 10 and 11 Cruising

As we sail south, the Denmark Strait is your pathway toward Iceland. Take in a presentation, share your photos, sip an icy cocktail in the bar or watch a film—there are many things to do during your time at sea. Your Expedition Team will also be on hand to answer any questions and point out wildlife.

### Day 12 Disembark Reykjavik, Iceland

You'll disembark in Reykjavik, Iceland's capital, at the end of your expedition, and be transferred to your included hotel for the night.

### Day 13 Depart Reykjavik

Today, make your way to Keflavik Airport to catch your onward flight, or spend more time exploring the fascinating city of

The Small Cruise Ship Collection

[www.small-cruise-ships.com](http://www.small-cruise-ships.com)

01432 507 280 (within UK)

[info@small-cruise-ships.com](mailto:info@small-cruise-ships.com) | [small-cruise-ships.com](http://small-cruise-ships.com)



 The Small Cruise  
Ship Collection  
[www.small-cruise-ships.com](http://www.small-cruise-ships.com)

[small-cruise-ships.com](http://small-cruise-ships.com)

[info@small-cruise-ships.com](mailto:info@small-cruise-ships.com)

Reykjavik.

Please Note:

Itineraries are subject to change.



# The Small Cruise Ship Collection

www.small-cruise-ships.com



small-cruise-ships.com

info@small-cruise-ships.com

## YOUR SHIP: ULTRAMARINE

**YOUR SHIP:** Ultramarine

**VESSEL TYPE:**

**LENGTH:**

**PASSENGER CAPACITY:**

**BUILT/REFURBISHED:**

Ultramarine is designed to go beyond the familiar in polar exploration, to discover new places, and to immerse you in the best the region has to offer. Equipped with two twin-engine helicopters, Ultramarine offers the most robust portfolio of adventure activities in the industry, the most spacious suites in its category, breathtaking public spaces, and more outdoor wildlife viewing spaces than other expedition ships its size. It also features an innovative mix of sustainability features that exceed all industry standards. With all this and more, Ultramarine is set to deliver the ultimate polar expedition experience. Cabin - Spacious Entryways, Personal Safes, Spa-inspired Bathrooms, Heated Bathroom Floors, Premium beds and bed linens, Convertible Beds, Individual Temperature Controls, HD Flatscreen Televisions, Oversized Windows With Sweeping Views, Electrical Supply: 220V Aboard - 2 Dining Areas, 4 Bars, Panorama Lounge, Lecture Theater, Library, Polar Boutique, Spa & Fitness Center, Oceanview Sauna, Zodiac Hangar with 4 Embarkation Points, 2 Ready Rooms with Individual Lockers, Walkaround Deck, Bridge Activities - Flightseeing (Included), Zodiac Cruising (Included), Hiking (Included), Lectures (Included), Camping (Optional), Sea

Kayaking (Optional), Stand-Up Paddleboarding (Optional), Paddle Excursions (Optional), Cross Country Skiing (Optional), Mountaineering



(Optional)

# The Small Cruise Ship Collection

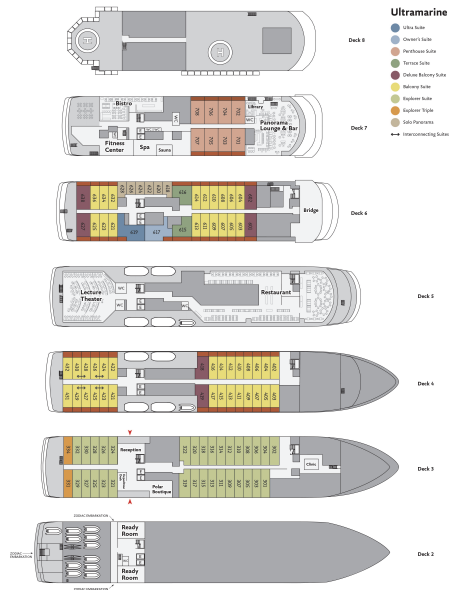
www.small-cruise-ships.com



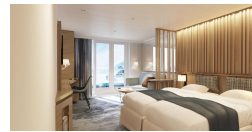
small-cruise-ships.com

info@small-cruise-ships.com

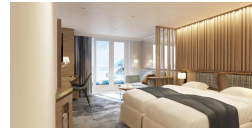
## INSIDE YOUR SHIP



Balcony Suite. From



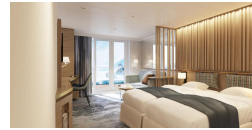
Deluxe Balcony Suite. From



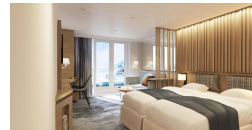
Explorer Suite. From



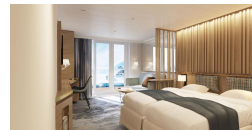
Explorer Triple. From



Owner's Suite. From



Penthouse Suite. From



Solo Panorama. From

Terrace Suite. From



# The Small Cruise Ship Collection

[www.small-cruise-ships.com](http://www.small-cruise-ships.com)



[small-cruise-ships.com](http://small-cruise-ships.com)

[info@small-cruise-ships.com](mailto:info@small-cruise-ships.com)

## PRICING

07-Jul-2025 to 19-Jul-2025

Explorer Triple. From	£8383 GBP pp
Balcony Suite. From	£12201 GBP pp
Terrace Suite. From	£15023 GBP pp
Penthouse Suite. From	£15604 GBP pp
Solo Panorama. From	£15604 GBP pp
Explorer Suite. From	£18907 GBP pp
Ultra Suite. From	£22244 GBP pp
Deluxe Balcony Suite. From	£28884 GBP pp
Owner's Suite. From	£40006 GBP pp



The Small Cruise Ship Collection

[www.small-cruise-ships.com](http://www.small-cruise-ships.com)

01432 507 280 (within UK)

[info@small-cruise-ships.com](mailto:info@small-cruise-ships.com) | [small-cruise-ships.com](http://small-cruise-ships.com)