

## The Small Cruise Ship Collection

www.small-cruise-ships.com

small-cruise-ships.com

info@small-cruise-ships.com

### THE MIGHTY BRAHMAPUTRA RIVER 8 DAY CRUISE - WILD EARTH HOSTED

The mighty Brahmaputra River in Northern India originates high in the Himalayas before flowing through the scenic Assam Valley where UNESCO protected national parks and remote rural communities provide travellers with the most wonderful and authentic expedition. Sailing 7-nights along this vast and changeable river, those coming from elsewhere in India will feel they have been transported to another world as the riverbanks extend beyond view and occasional sandstorms make it seem like we are sailing through a desert. Visiting two national Park we sail lazily through Nameri National Park to spot a vast array of birdlife, whilst during a full day jeep safari at Kaziranga National Park, we encounter vast numbers of protected mammals including the Indian One-Horned rhino and, famously spotted on one expedition but extremely rare, the Bengal Tiger. Assam is also home to a deep and colourful culture which we encounter both on land and onboard with dances and performances from local performers, explained by our experienced Assamese guides. This is truly an adventure unlike any other. Meet your host, Kylie Set sail along the mighty Brahmaputra with Kylie, Wild Earth Travel's reservation coordinator and all-round travel expert, who has worked in the travel industry for more than 20 years. Kylie has experienced an array of the world's wonders, but India stands out as one of her all-time favourite destinations. "I visited the Rajasthan area and just loved the whole experience - the culture, people, history..." On this journey, Kylie is excited to share her love of India with Wild Earth travellers and also the opportunity to experience a side of India rarely encountered. "I can't wait to go wildlife watching along the Brahmaputra River and have the chance to

safari in two national parks - I hope we are one of the lucky few who get to see the Indian Tiger in



— Pandaw Journey  
•••• Land content

the wild!"

#### ITINERARY

DAY 1 GUWAHATI

Embark you Pandaw vessel in Guwahati, gateway to Assam. Meet your crew for the next 7-nights and set sail upstream onto

The Small Cruise Ship Collection

www.small-cruise-ships.com

01432 507 280 (within UK)

info@small-cruise-ships.com | small-cruise-ships.com



## The Small Cruise Ship Collection

[www.small-cruise-ships.com](http://www.small-cruise-ships.com)

[small-cruise-ships.com](http://small-cruise-ships.com)

[info@small-cruise-ships.com](mailto:info@small-cruise-ships.com)

the Mighty Brahmaputra River.

ruins overlooking the town.

### DAY 2 SUTARGAON RIVER VILLAGE

### DAY 5 NAMERI NATIONAL PARK

Today we stop at a local village consisting of migrant populations that have settled and been provided with official status by the government. Their charming village is the perfect place to learn about life along such a dramatically changeable river.

After an early breakfast we head ashore and drive north toward the state of Arunachal Pradesh to explore our second national Park - Nameri National Park. Here we take a float trip down the Jia - Bhoreli River of around 2 hours and enjoy the abundant birdlife and breathtaking scenery backdropped by the Blue Hills in the Eastern Himalayan range. We return for lunch onboard and set sail downstream.

### DAY 3 SILGHAT AND SAFARI

### DAY 6 MYSTICAL MAYANG

Setting sail early morning we reach Silghat, at the doorstep of Kaziranga National Park. We make our first venture into this park in the afternoon in search of the reserve's most famous inhabitant, the Royal Bengal Tigers for which the park boasts the highest density of any place in the world. Tiger spotting is extremely rare but chances to see Kaziranga's other famous inhabitants are abundant.

Stepping ashore in Mayang, a sizeable village along the shores of the Brahmaputra, we learn about the history of magic and sorcery that was prevalent in the region. We visit the fascinating Mayang museum which explains how various mantras were used for anything from curing ailments to identifying a thief. We are then welcomed into the home of a local Mayang resident for a discussion and perhaps demonstration of some tricks.

### DAY 4 KAZIRANGA NATIONAL PARK

### DAY 7 SUALKUCHI SILK WEAVING VILLAGE

We leave the ship in the early morning for our second Jeep safari into Kaziranga National Park. Mornings are the perfect time to spot the Indian One-Horned Rhinos, Buffalos, Elephants plus a host of birdlife, including hornbills and kingfishers. Following your safari, we visit a typical Assamese tea garden and learn about the process from bush to cup. After lunch onboard we sail downstream toward Tezpur and if time permits, visit Bamuni Hills, a 9th century temple complex that lies in

Sualkuchi is a major centre for weaving in Assam. Here we learn about the entire silk making production from the cocoon, to spinning and weaving to make the typical saree worn by local women. There is a chance to buy some local silken souvenirs and experience a traditional folk dance before we return to the ship by electric rickshaw.

The Small Cruise Ship Collection

[www.small-cruise-ships.com](http://www.small-cruise-ships.com)

01432 507 280 (within UK)

[info@small-cruise-ships.com](mailto:info@small-cruise-ships.com) | [small-cruise-ships.com](http://small-cruise-ships.com)



The Small Cruise  
Ship Collection

[www.small-cruise-ships.com](http://www.small-cruise-ships.com)

[small-cruise-ships.com](http://small-cruise-ships.com)

[info@small-cruise-ships.com](mailto:info@small-cruise-ships.com)

DAY 8 GUWAHATI

After breakfast, disembark the ship and transfer to city hotel or Guwahati airport for your onward journey.

Please note:

Itineraries are subject to change.

# The Small Cruise Ship Collection

www.small-cruise-ships.com

small-cruise-ships.com

info@small-cruise-ships.com

## YOUR SHIP: KINDAT PANDAW

**YOUR SHIP:** Kindat Pandaw

**VESSEL TYPE:**

**LENGTH:**

**PASSENGER CAPACITY:**

**BUILT/REFURBISHED:**

Kindat Pandaw is a very shallow draft vessel that can go just about anywhere anytime, it is big enough to carry 30-40 passengers with lots of outdoor deck space. The ship has quality mountain bikes for your independent exploration. ACCOMMODATION 8 upper deck, 10 main deck, 170 square feet, finished in teak and brass, AC with individual control, Premium mattresses, Multi-configuration plugs, 24h laundry service WINING & DINING Bistro style dining room with outside seating and air-conditioning inside, Local master chef heading an experienced international culinary team, Semi-buffet breakfast, semi-buffet lunch, and seated theme dinners, Daily lean & light menu options, Complimentary local mineral water, jugged coffee, teas & tisanes, Extensive wine list with premium wines, Welcome drink on arrival, Welcome cocktail, Farewell reception, Theme dinners, 24hrs hospitality bar, Onboard bakery with daily freshly baked breads and rolls ON EXCURSIONS Admissions, Shoe cleaning after excursions, Bottled drinking water, We give away aluminium water bottles, Cold towel service after excursions, Refreshing drink following excursions, 1st aid trained assistant guide to follow all tours and excursions, Quality mountain bikes available for independent exploration SAFETY &

**SECURITY** All onboard crew is trained and certified as per international marine standards, Fire alarm system in all cabins, public areas and back areas, Fire fighting system in all ship areas, Expert marine superintendent, 24 hrs watch on duty **ONBOARD STAFF** Captain, River Pilot, First Officer, Chief Engineer, 1st Engineer, Electrician, Bosun & nautical crew, Ship manager, Housekeeping, Dining, Bar keeper, Chefs, Local tour guides **PUBLIC SPACES** Guest relation desk, Library with contemporary and classic



literature

The Small Cruise Ship Collection

www.small-cruise-ships.com

01432 507 280 (within UK)

info@small-cruise-ships.com | small-cruise-ships.com



The Small Cruise  
Ship Collection

[www.small-cruise-ships.com](http://www.small-cruise-ships.com)

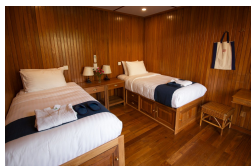
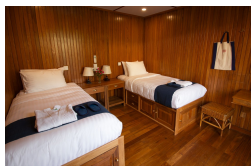
[small-cruise-ships.com](http://small-cruise-ships.com)

[info@small-cruise-ships.com](mailto:info@small-cruise-ships.com)

## INSIDE YOUR SHIP

---

Main Deck Twin Sharing    Upper Deck Twin Sharing



The Small Cruise  
Ship Collection  
[www.small-cruise-ships.com](http://www.small-cruise-ships.com)

01432 507 280 (within UK)

[info@small-cruise-ships.com](mailto:info@small-cruise-ships.com) | [small-cruise-ships.com](http://small-cruise-ships.com)



The Small Cruise  
Ship Collection

[www.small-cruise-ships.com](http://www.small-cruise-ships.com)

[small-cruise-ships.com](http://small-cruise-ships.com)

[info@small-cruise-ships.com](mailto:info@small-cruise-ships.com)

## PRICING

---

11-Feb-2025 to 18-Feb-2025

Upper Deck Twin Sharing £3034 GBP pp

Main Deck Twin Sharing £2665 GBP pp