

The Small Cruise Ship Collection

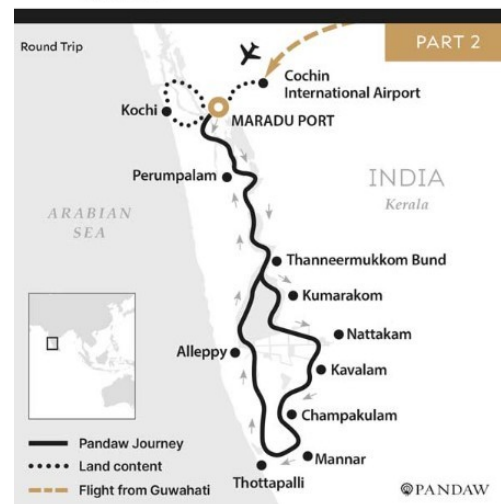
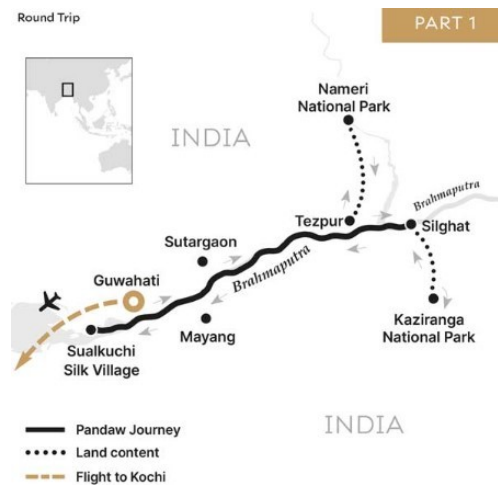
www.small-cruise-ships.com

small-cruise-ships.com

info@small-cruise-ships.com

THE MIGHTY BRAHMAPUTRA & KERALA BACKWATERS - INDIA RIVER CRUISE

Exploring the far extremes of India from the North-East Assam region to the South-West Kerala, this combo cruise takes you 3,000 KM on two distinct small ship river expeditions in the lesser visited parts of the country. Combining Pandaw's popular expedition along the wild Brahmaputra River with our newest itinerary sailing the backwaters of Kerala, embark on an adventure not to be missed with Pandaw.



ITINERARY

DAY 1 GUWAHATI

The Small Cruise Ship Collection

www.small-cruise-ships.com

01432 507 280 (within UK)

info@small-cruise-ships.com | small-cruise-ships.com



The Small Cruise Ship Collection

www.small-cruise-ships.com

small-cruise-ships.com

info@small-cruise-ships.com

Embark your Pandaw vessel in Guwahati, gateway to Assam. Meet your crew for the next 7-nights and set sail upstream onto the Mighty Brahmaputra River.

DAY 2 SUTARGAON RIVER VILLAGE

Today we stop at a local village consisting of migrant populations that have settled and been provided with official status by the government. Their charming village is the perfect place to learn about life along such a dramatically changeable river.

DAY 3 SILGHAT AND SAFARI

Setting sail early morning we reach Silghat, at the doorstep of Kaziranga National Park. We make our first venture into this park in the afternoon in search of the reserve's most famous inhabitant, the Royal Bengal Tigers for which the park boasts the highest density of any place in the world. Tiger spotting is extremely rare but chances to see Kaziranga's other famous inhabitants are abundant.

DAY 4 KAZIRANGA NATIONAL PARK

We leave the ship in the early morning for our second Jeep safari into Kaziranga National Park. Mornings are the perfect time to spot the Indian One-Horned Rhinos, Buffalos, Elephants plus a host of birdlife, including hornbills and kingfishers. Following your safari, we visit a typical Assamese tea garden

and learn about the process from bush to cup. After lunch onboard we sail downstream toward Tezpur and if time permits, visit Bamuni Hills, a 9th century temple complex that lies in ruins overlooking the town.

DAY 5 NAMERI NATIONAL PARK

After an early breakfast we head ashore and drive north toward the state of Arunachal Pradesh to explore our second national Park - Nameri National Park. Here we take a float trip down the Jia - Bholeli River of around 2 hours and enjoy the abundant birdlife and breathtaking scenery backdropped by the Blue Hills in the Eastern Himalayan range. We return for lunch onboard and set sail downstream.

DAY 6 MYSTICAL MAYANG

Stepping ashore in Mayang, a sizeable village along the shores of the Brahmaputra, we learn about the history of magic and sorcery that was prevalent in the region. We visit the fascinating Mayang museum which explains how various mantras were used for anything from curing ailments to identifying a thief. We are then welcomed into the home of a local Mayang resident for a discussion and perhaps demonstration of some tricks.

DAY 7 SUALKUCHI SILK WEAVING VILLAGE

Sualkuchi is a major centre for weaving in Assam. Here we learn about the entire silk making production from the cocoon, to spinning and weaving to make the typical saree worn by local

The Small Cruise Ship Collection

www.small-cruise-ships.com

01432 507 280 (within UK)

info@small-cruise-ships.com | small-cruise-ships.com



The Small Cruise Ship Collection

www.small-cruise-ships.com

small-cruise-ships.com

info@small-cruise-ships.com

women. There is a chance to buy some local silken souvenirs and experience a traditional folk dance before we return to the ship by electric rickshaw.

DAY 8 GUWAHATI

After breakfast, disembark the ship and transfer to the airport for your flight to Kochi. Enjoy the rest of the day at leisure with overnight in a hotel in Kochi.

DAY 9 ARRIVE KOCHI

Transfer to Maradu port and board RV Kochi Pandaw. After lunch set off for an orientation tour of Kochi, the exotic capital of Kerala state on the Malabar Coast.

DAY 10 KOCHI

Visit Fort Kochi, St Louis's church and Jew Town with its old Paradesi synagogue, museums, the Shiva temple, markets and much else. Afternoon sail to a village of coir weavers/shell harvesters and see many indigenous techniques of local fishing by small scale Chinese nets and fish traps.

DAY 11 THE THANNERMEKKOM BUND

The Syrian Village in Kerala showcases a unique blend of traditional Syrian Christian culture and heritage. Explore its distinctive architecture, historic churches, and local customs.

This village offers a glimpse into the rich, diverse cultural tapestry of Kerala's Syrian Christian community.

In the afternoon visit Kumarakom Bird Sanctuary followed by the Craft Museum, showcasing Kerala's rich artisanal heritage. Explore traditional crafts, including intricate wood carvings, handwoven textiles, and vibrant pottery. This museum offers a unique glimpse into the region's cultural craftsmanship and artistic traditions.

DAY 12 NATTAKAM

The Munroe lighthouse for panoramic views of the Kerala coastline. This historic lighthouse, built in 1885, guides ships with its striking beacon. Explore its rich maritime history and enjoy breathtaking vistas of the Arabian Sea and surrounding landscapes.

DAY 13 KAVALAM

At this fishing village canals meet and here experience traditional Kerala life. Explore the picturesque waterways, bustling fishing activities, and authentic village charm

On to Kettuvalom to visit a boat yard where traditional methods of wooden boat building by joining wooden planks using coir, cotton and natural resin.

After lunch, explore Allapphuza (Alleppey) Harbour on foot, a bustling hub of Kerala's backwater network with traditional houseboats and vibrant fishing activities. This lively port offers a

The Small Cruise Ship Collection
www.small-cruise-ships.com

01432 507 280 (within UK)

info@small-cruise-ships.com | small-cruise-ships.com



The Small Cruise
Ship Collection

www.small-cruise-ships.com

small-cruise-ships.com

info@small-cruise-ships.com

glimpse into the local maritime culture and the scenic beauty of the region's interconnected waterways.

DAY 14 ALLAPUZHA - THOTTAPALLI

Sail the Pampa River and visit ancestral home of Kuriakose Elias Chavara, the birthplace of this revered saint and social reformer, and gain insights into his life, contributions, and Kerala's Christian heritage.

Sail on to Champakulam, and the Kalloorkad St. Mary's Basilica founded in AD427 and is one of the oldest churches in India. Renowned for its impressive Gothic architecture, the basilica features intricate stained-glass windows, soaring spires, and detailed frescoes. The basilica is a major pilgrimage site, drawing visitors for its annual feast of the Virgin Mary. Nearby, is the Karumadi Kuttan, a monumental black stone Buddha that dates to the 9th century, reflecting the region's ancient Buddhist influences.

Evening moor in Thottapalli where it is a short stroll to the glistening white beaches.

DAY 15 PERUMPALAM

After a morning walk on the beach at Thottapalli return up the Pampa River to re-enter the Venband Lake and on to Perumpalam Bhagavathy Temple, a notable temple with female priests it is renowned for its unique practice of women priests. Then visit the ancient village of Mannar, known for its metal work. Watch the casting of traditional lamps, ornate locks, bells,

cauldrons, and various vessels used in temples.

DAY 16 RETURN - KOCHI FOR DISEMBARKATION

Dissembarkation and transfers to the Cochi International Airport.

Please note:

Itineraries are subject to change.

The Small Cruise
Ship Collection

www.small-cruise-ships.com

01432 507 280 (within UK)

info@small-cruise-ships.com | small-cruise-ships.com

The Small Cruise Ship Collection

www.small-cruise-ships.com

small-cruise-ships.com

info@small-cruise-ships.com

YOUR SHIP: KINDAT PANDAW

YOUR SHIP: Kindat Pandaw

VESSEL TYPE:

LENGTH:

PASSENGER CAPACITY:

BUILT/REFURBISHED:

Kindat Pandaw is a very shallow draft vessel that can go just about anywhere anytime, it is big enough to carry 30-40 passengers with lots of outdoor deck space. The ship has quality mountain bikes for your independent exploration. ACCOMMODATION 8 upper deck, 10 main deck, 170 square feet, finished in teak and brass, AC with individual control, Premium mattresses, Multi-configuration plugs, 24h laundry service WINING & DINING Bistro style dining room with outside seating and air-conditioning inside, Local master chef heading an experienced international culinary team, Semi-buffet breakfast, semi-buffet lunch, and seated theme dinners, Daily lean & light menu options, Complimentary local mineral water, jugged coffee, teas & tisanes, Extensive wine list with premium wines, Welcome drink on arrival, Welcome cocktail, Farewell reception, Theme dinners, 24hrs hospitality bar, Onboard bakery with daily freshly baked breads and rolls ON EXCURSIONS Admissions, Shoe cleaning after excursions, Bottled drinking water, We give away aluminium water bottles, Cold towel service after excursions, Refreshing drink following excursions, 1st aid trained assistant guide to follow all tours and excursions, Quality mountain bikes available for independent exploration SAFETY &

SECURITY All onboard crew is trained and certified as per international marine standards, Fire alarm system in all cabins, public areas and back areas, Fire fighting system in all ship areas, Expert marine superintendent, 24 hrs watch on duty **ONBOARD STAFF** Captain, River Pilot, First Officer, Chief Engineer, 1st Engineer, Electrician, Bosun & nautical crew, Ship manager, Housekeeping, Dining, Bar keeper, Chefs, Local tour guides **PUBLIC SPACES** Guest relation desk, Library with contemporary and classic



literature

The Small Cruise Ship Collection

www.small-cruise-ships.com

01432 507 280 (within UK)

info@small-cruise-ships.com | small-cruise-ships.com



The Small Cruise
Ship Collection

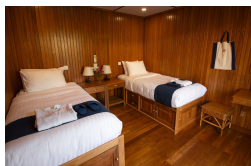
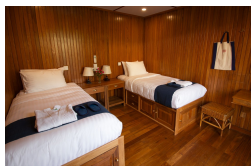
www.small-cruise-ships.com

small-cruise-ships.com

info@small-cruise-ships.com

INSIDE YOUR SHIP

Main Deck Twin Sharing Upper Deck Twin Sharing



The Small Cruise
Ship Collection

www.small-cruise-ships.com

01432 507 280 (within UK)

info@small-cruise-ships.com | small-cruise-ships.com



The Small Cruise
Ship Collection

www.small-cruise-ships.com

small-cruise-ships.com

info@small-cruise-ships.com

PRICING

07-Nov-2025 to 22-Nov-2025

Main Deck Twin Sharing £10014 GBP pp

Upper Deck Twin Sharing £12518 GBP pp

21-Jan-2026 to 05-Feb-2026

Main Deck Twin Sharing £7119 GBP pp

Upper Deck Twin Sharing £8898 GBP pp

28-Jan-2026 to 12-Feb-2026

Main Deck Twin Sharing £7119 GBP pp

Upper Deck Twin Sharing £8898 GBP pp

20-Feb-2026 to 07-Mar-2026

Main Deck Twin Sharing £7119 GBP pp

Upper Deck Twin Sharing £8898 GBP pp

28-Feb-2026 to 15-Mar-2026

Main Deck Twin Sharing £7119 GBP pp

Upper Deck Twin Sharing £8898 GBP pp

15-Mar-2026 to 30-Mar-2026

Main Deck Twin Sharing £7119 GBP pp

Upper Deck Twin Sharing £8898 GBP pp