

The Small Cruise Ship Collection

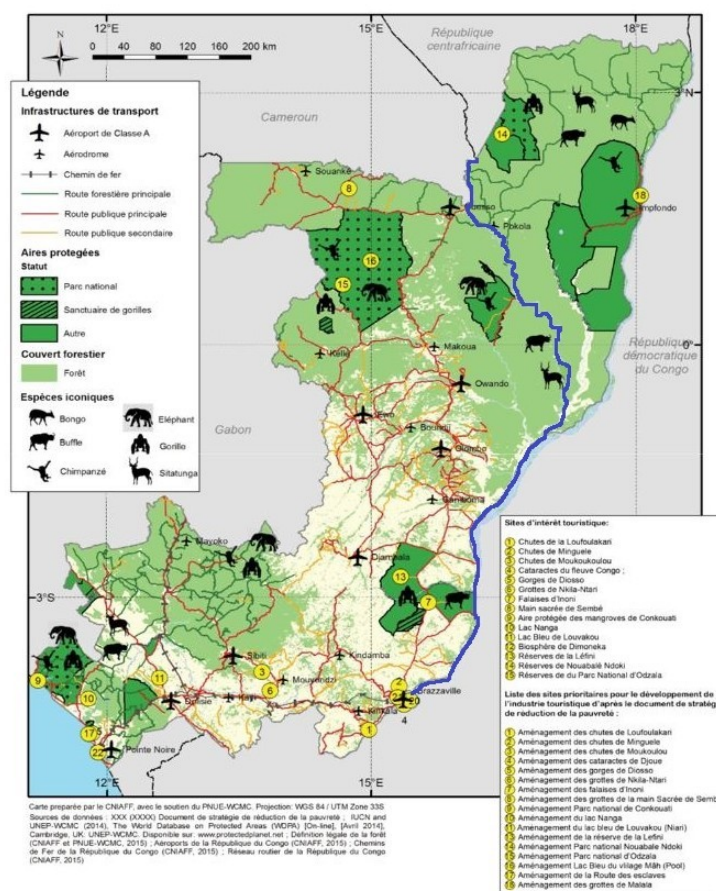
www.small-cruise-ships.com

small-cruise-ships.com

info@small-cruise-ships.com

THE GREAT RIVER CONGO: BETWEEN BRAZZAVILLE AND OYO

This 13-day Congo River expedition starts in Brazzaville, exploring the city before embarking on a scenic journey up the Congo River. Travelers visit historical sites like the Teke Kingdom, participate in traditional rituals, and encounter wildlife, including gorillas and hippos, in natural reserves. Along the way, they engage with local communities, learning about their culture, fishing practices, and palm wine production. The trip ends with a return to Brazzaville, with optional extensions to nearby cities and nature reserves.



ITINERARY

Day 1 - Arrival in Brazzaville

Arrival in Brazzaville. Boarding the ship.
Night on board.



The Small Cruise Ship Collection

www.small-cruise-ships.com

small-cruise-ships.com

info@small-cruise-ships.com

Day 2 - Visit of Brazzaville and beginning of the cruise

In the morning, we set out to explore the city, visiting the Congo Basin Museum, the Poto Poto School, and the Cathedral, finishing with the famous "La Sape" (Society of Ambiance-Makers and Elegant People).

Then, we begin the long journey up the Congo River through a landscape of green hills. We take advantage of the first miles to get to know our guides and learn about the Congo.

Night on board.

Day 3 - The Téké Kingdom and Kebe Kebe ritual

In the morning, we visit Ngabe, one of the ancient capitals of the Teke kingdom. We ascend through the village to visit the current queen. As the guardian of "Nkwembali," the spiritual deity of the Bateke, she is authorized to transfer power to the new king, the Makoko. She holds significant influence in the Teke kingdom.

After lunch on board, we return to the village to witness a Kebe Kebe ritual, which includes a dance and an initiatory society. The dance resembles whirling dervishes wrapped in raffia robes, manipulating a puppet generally representing a painted Kayo head.

Night on board.

Day 4 - The gorillas of Lesio Louna

We leave early in the morning on a 3-hour drive to the Lesio Louna reserve, part of the Congolese gorilla protection program (PPG). On a motorboat, we set off on the Louna River to reach

the islands where rescued gorillas live during their adaptation period. Once they can feed themselves, they will be released into the park.

We then continue down the Louna River to observe hippos. After spending time with these fascinating primates, we return to the ship by 4x4 for another 3-hour drive.

Night on board.

Day 5 - The Lefini Estuary

In the morning, we reach the estuary of the Lefini River, a popular spot for hippos. We leave the ship on launch boats to observe these majestic mammals, return for lunch, and continue our ascent. The Congo River widens considerably, forming a maze of islands where fishing villages are established during the dry season.

Night on board.

Day 6 - The Congo River's thousand islands and "whaleboats"

We explore the communities and villages along the river. Based on the day of the week, we can stroll through local markets to experience daily life.

From the observation deck, we watch the fascinating whaleboats and flat-bottomed transport barges that travel along the Congo River, transporting goods, people, and livestock. These floating villages play a crucial role in the economy and life of the Congo River communities.

If the weather allows, we may bivouac on a sandbank amidst the islands.

Night on board.

The Small Cruise Ship Collection

www.small-cruise-ships.com

01432 507 280 (within UK)

info@small-cruise-ships.com | small-cruise-ships.com



The Small Cruise Ship Collection

www.small-cruise-ships.com

small-cruise-ships.com

info@small-cruise-ships.com

Day 7 - The city of Mossaka and its famous salted fish

In the morning, we explore the city of Mossaka. Guided by Jean de Dieu, we visit remnants of the colonial era, a bustling local market, and alleys where salted fish dryers are installed, learning about the region's traditional fish preservation techniques.

We return to the ship for lunch and continue navigating to Lukolela.

Night on board.

Day 8 - The fairground market of Lukolela and the fishing village of Likendze

Today, we visit the fairground market of Lukolela, where villagers gather to trade their products. These markets are social gatherings where friends and families meet.

We then navigate through marshes to reach Likendze village on the Sangha River. Here, we learn various fishing techniques, and those interested can try their hand at line fishing. The day ends with a traditional village dance performance.

Night on board.

Day 9 - Kayaking on the famous Sangha River

In the morning, we leave on launch boats to observe hippos. In the afternoon, we explore the Sangha River on kayaks, passing fishing villages and ancient trees. Depending on the season, we may see emblematic birds like ospreys, fish eagles, and kingfishers.

Night on board.

Day 10 - Palm wine, fish, and the Likouala people

We visit the camp of Mbam, a settlement where Rwandans, Zairians, and Congolese have made their home. We meet Mr. Mokole, who collects palm wine using gourds attached to palm trees, and taste it.

Next, we visit the fishing camp of Ekouli Pouri on the Likouala Mossaka River, learning about the life of its few inhabitants, the Likoualas. We return to the ship and navigate towards the Alima River.

In the evening, we meet the Moye people, who prepare a dance by the river.

Night on board.

Day 11 - The Alima River and the Moye people

We continue navigating the Alima River, passing charming raffia villages. Later, we reach Mondongo, a village home to the Moye people. Gislain explains the local pharmacopoeia, and we learn how villagers use plants for traditional medicine.

We reach the town of Oyo in the night.

Night on board.

Day 12 - Return to Brazzaville

We disembark in the morning for a 6.5-hour bus journey back to Brazzaville. We arrive in the evening.

Dinner and overnight in a 5-star hotel.

The Small Cruise
Ship Collection

www.small-cruise-ships.com

01432 507 280 (within UK)

info@small-cruise-ships.com | small-cruise-ships.com



The Small Cruise
Ship Collection

www.small-cruise-ships.com

small-cruise-ships.com

info@small-cruise-ships.com

Day 13 - Departure

Transfer to the airport for departure.



The Small Cruise
Ship Collection

www.small-cruise-ships.com

01432 507 280 (within UK)

info@small-cruise-ships.com | small-cruise-ships.com



The Small Cruise Ship Collection

www.small-cruise-ships.com

small-cruise-ships.com

info@small-cruise-ships.com

YOUR SHIP: PRINCESS NGALESSA

YOUR SHIP: Princess Ngalessa

VESSEL TYPE:

LENGTH:

PASSENGER CAPACITY:

BUILT/REFURBISHED:

The ship was built in a Belgian run shipyard in Kinshasa in 2017. It takes the form of the passenger ships that have for decades transported passengers on the Congo River and its tributaries between the different capitals of Central Africa. With a robust steel construction, she is powered by two new-generation 380 HP Caterpillar engines, thus reducing noise pollution and fuel consumption. Its draft of 90 centimeters allows it to navigate easily on shallow rivers. In 2022/2023, she was refitted to launch the first 4 safari cruises in the heart of one of the most mysterious forests in the world, the Congo Basin forest. Its renovation into a comfortable 4-star Boutique Hotel Ship launches a new era for the development of sustainable tourism in the Republic of Congo (Congo Brazzaville). In June 2023 she began the first cruises on the Congo and Sangha rivers, thus reviving the long tradition of river navigation in the Congo. ON BOARD LIVING AND SOCIAL AREAS :600 m² of common areas Dining room Indoor bar and lounge Outdoor lounge Outdoor jacuzzi Massage Room Observation Deck WORLD CLASS DINING PROGRAM A culinary experience nourished by African and European influences A menu specially prepared by a French Chef rewarded for his work with a Michelin

star in 2021 Local products and fine wine. LAUNCH BOATS FOR SHORE EXCURSIONS Two auxiliary aluminum launch boats equipped with four-stroke low emission engines. Each boat has a capacity of 15 passengers. Kayaks for two people Accommodation Passengers are accommodated in 14 Design cabins across three decks. Owner's Suite 35 m². Observation deck. Private balcony (9m²) : Three windows, armchair, writing desk and chair, two bedside tables, sofa, and a closet. Bathroom. Air-conditioning. 1 cabin with two single beds that can convert to a queen. 1 cabin with one queen bed. (401, 402) Forward Master Suite 23 m². Second Deck Forward. Public balcony : Four windows, armchair, writing desk and chair, two bedside tables, and a closet. Bathroom. Air-conditioning. 2 cabins with queen beds. (201, 202) Master Suite 27 m². Second Deck. Public balcony : Three windows, armchair, writing desk and chair, two bedside tables, sofa, and a closet. Bathroom. Air-conditioning. 1 cabin with two single beds that can convert to a queen. 1 cabin with one queen bed. (203, 204) Deluxe Suite 18 m². Second Deck. Public balcony : Two windows, armchair, writing desk and chair, two bedside tables, and a closet. Bathroom. Air-conditioning. 2 cabins with two single beds that can convert to a queen. 4 cabins with queen beds. (205, 206, 207, 208, 209, 210) Classic Cabin 12 m². First Deck. Public balcony : One window, armchair and a closet. Bathroom. Air-conditioning. 2 cabins with two single beds

The Small Cruise Ship Collection
www.small-cruise-ships.com

01432 507 280 (within UK)

info@small-cruise-ships.com | small-cruise-ships.com



The Small Cruise
Ship Collection

www.small-cruise-ships.com

small-cruise-ships.com

info@small-cruise-ships.com



(101, 102)



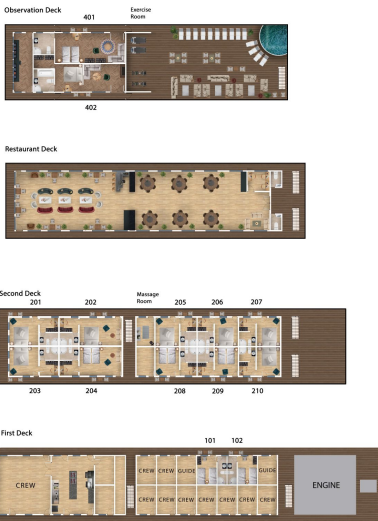
The Small Cruise
Ship Collection

www.small-cruise-ships.com

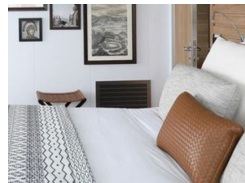
small-cruise-ships.com

info@small-cruise-ships.com

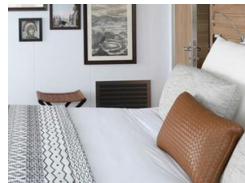
INSIDE YOUR SHIP



Deluxe Suite

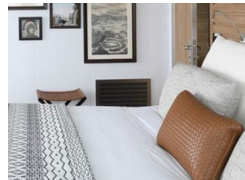


Forward Master Suite



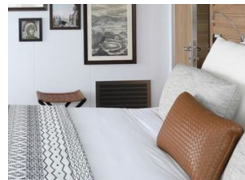
Forward Superior Suite

Master Suite



Owner's Suite

Superior Suite





The Small Cruise Ship Collection

www.small-cruise-ships.com

small-cruise-ships.com

info@small-cruise-ships.com

PRICING

03-Apr-2025 to 15-Apr-2025

Deluxe Suite	£5185 GBP pp
Forward Master Suite	£5615 GBP pp
Master Suite	£5615 GBP pp
Superior Suite	£5865 GBP pp
Forward Superior Suite	£6205 GBP pp
Owner's Suite	£6715 GBP pp

17-Apr-2025 to 29-Apr-2025

Deluxe Suite	£5185 GBP pp
Master Suite	£5615 GBP pp
Forward Master Suite	£5615 GBP pp
Superior Suite	£5865 GBP pp
Forward Superior Suite	£6205 GBP pp
Owner's Suite	£6715 GBP pp

02-May-2025 to 14-May-2025

Deluxe Suite	£5185 GBP pp
Master Suite	£5615 GBP pp
Forward Master Suite	£5615 GBP pp
Superior Suite	£5865 GBP pp
Forward Superior Suite	£6205 GBP pp
Owner's Suite	£6715 GBP pp

01-Jun-2025 to 13-Jun-2025

Deluxe Suite	£5185 GBP pp
Master Suite	£5615 GBP pp
Forward Master Suite	£5615 GBP pp
Superior Suite	£5865 GBP pp
Forward Superior Suite	£6205 GBP pp
Owner's Suite	£6715 GBP pp

13-Jun-2025 to 25-Jun-2025

Deluxe Suite	£5185 GBP pp
Master Suite	£5615 GBP pp
Forward Master Suite	£5615 GBP pp
Superior Suite	£5865 GBP pp
Forward Superior Suite	£6205 GBP pp
Owner's Suite	£6715 GBP pp

27-Jun-2025 to 09-Jul-2025

Deluxe Suite	£5185 GBP pp
Forward Master Suite	£5615 GBP pp
Master Suite	£5615 GBP pp
Superior Suite	£5865 GBP pp
Forward Superior Suite	£6205 GBP pp
Owner's Suite	£6715 GBP pp



The Small Cruise Ship Collection

www.small-cruise-ships.com

small-cruise-ships.com

info@small-cruise-ships.com

PRICING

26-Dec-2025 to 07-Jan-2026

Deluxe Suite	£5185 GBP pp
Master Suite	£5615 GBP pp
Forward Master Suite	£5615 GBP pp
Superior Suite	£5865 GBP pp
Forward Superior Suite	£6205 GBP pp
Owner's Suite	£6715 GBP pp

08-Jan-2026 to 20-Jan-2026

Deluxe Suite	£5185 GBP pp
Master Suite	£5615 GBP pp
Forward Master Suite	£5615 GBP pp
Superior Suite	£5865 GBP pp
Forward Superior Suite	£6205 GBP pp
Owner's Suite	£6715 GBP pp