

The Small Cruise Ship Collection

www.small-cruise-ships.com

small-cruise-ships.com

info@small-cruise-ships.com

SOUTH ATLANTIC SEMI-CIRCUMNAVIGATION

On this stunning cruise, gaze at spectacular glaciers and icebergs as we sail from Ushuaia to the icy wilderness of South Shetlands. Immerse in the magnificent landscapes of Antarctica. Meet Adelle penguins and downy snow petrels at South Orkneys. Explore beautiful South Georgia and its world's largest macaroni penguin population. Observe some of the world's rarest animals on Gough Island and the volcanic islands of Tristan da Cunha. End your epic voyage in Cape Town with memories you'll treasure forever.



ITINERARY

DAY 1 - 2 Overnight in Buenos Aires then fly to USHUAIA

Ushuaia is the gateway to the White Continent. Found at the southernmost tip of South America in Argentinian Patagonia, the city is often described as “the End of the World”. The city’s mountain backdrop rises above the harbour and entrance to the Beagle Channel. The town itself is walkable and has a few small museums as well as pubs, restaurants and cafes - a good place to try Patagonian lamb cooked over open fire pits.

DAY 3-4 AT SEA

You can spend your day at sea enjoying the many facilities available. Head to the sauna, get in a workout in the state-of-the-art gym or relax in the jacuzzi whilst taking in incredible views along the way. If you prefer to learn a little more about your surroundings, listen to an informative talk or have a chat with one of our knowledgeable on-board experts.

DAY 5 SOUTH SHETLAND ISLANDS

The Small Cruise Ship Collection

www.small-cruise-ships.com

01432 507 280 (within UK)

info@small-cruise-ships.com | small-cruise-ships.com



The Small Cruise Ship Collection

www.small-cruise-ships.com

small-cruise-ships.com

info@small-cruise-ships.com

While the South Shetlands' proximity to Antarctica makes the ice-bound sea impassable during winter (April to October), these are the first islands to see snow melt in spring (November) and the slightly warmer temperature means that the fauna is also different from what you see in Antarctica proper. As we go ashore by Zodiac, notice ferns, grasses, lichens and native flora that have more in common with Patagonia than they do with Antarctica.

DAY 6-7 ANTARCTIC PENINSULA

Among captivating glaciers, majestic icebergs and snowy islands, the Antarctic Peninsula is where most visitors to the White Continent will live out their Antarctica dream. The Antarctic Peninsula, the most accessible area of the continent, hosts several scientific bases and some of the most interesting wildlife scenery, such as the extremely photogenic Lemaire Channel. Shore excursions might include Petermann Island, where among Adelie penguins, blue-eyed shags and skuas, huge, lumbering elephant seals haul out.

DAY 8 SOUTH SHETLAND ISLANDS

While the South Shetlands' proximity to Antarctica makes the ice-bound sea impassable during winter (April to October), these are the first islands to see snow melt in spring (November) and the slightly warmer temperature means that the fauna is also different from what you see in Antarctica proper. As we go ashore by Zodiac, notice ferns, grasses, lichens and native flora that have more in common with Patagonia than they do with Antarctica.

DAY 9 SOUTH ORKNEY ISLANDS

Located east of the South Shetland Islands, the South Orkney Islands are rarely visited. Often shrouded in mist, the

archipelago's four islands are surrounded by icebergs and sea ice that often presents a challenge when landing. Unfortunately, the former sealing and whaling industries decimated the islands' populations of sea mammals, however, seal populations have started to make a return. Those lucky enough to make a shore landing can also observe nesting Adélie penguins, gentoo penguins and downy snow petrels.

DAY 10 AT SEA

Days at sea are the perfect chance to relax, unwind and do whatever takes your fancy. So whether that is going to the gym, visiting the spa, trying to spot a whale from the deck, reading a chapter or two, or simply topping up your tan, these blue sea days are the perfect balance to the green days spent exploring on land.

DAY 11-12 SOUTH GEORGIA

Often called the "Galapagos of the Poles", South Georgia has a number of landing sites where you get up close to half a million king penguins or three million breeding pairs of macaroni penguins, making up the largest population in the world. If you are lucky you will also see harrumphing elephant seals - from a distance! We also visit Grytviken, the historic whaling station where legendary British explorer Ernest Shackleton (1874-1922) is buried.

DAY 13-15 AT SEA

Spend your day at sea enjoying your boutique 5-star ship. Treat yourself to a spa day, attend an expert-led onboard lecture or enjoy the ocean views from the deck or the comfort of our Observation Lounge.

DAY 16 GOUGH ISLAND

The Small Cruise Ship Collection

www.small-cruise-ships.com

01432 507 280 (within UK)

info@small-cruise-ships.com | small-cruise-ships.com



The Small Cruise Ship Collection

www.small-cruise-ships.com

small-cruise-ships.com

info@small-cruise-ships.com

Located 1700 Nautical miles from Cape Town, Gough Island is difficult to locate on a map. With just a permanent group of Scientists Gough is definitely one of the most remote inhabited islands on the planet, home also to some of the world's rarest birds: the Gough Moorhen and the Gough Bunting. We hope to spot some migrating whales and other fascinating wildlife in the vicinity of the Atlantic Gem.

DAY 17 TRISTAN DA CUNHA

With barely 250 permanent inhabitants, Tristan da Cunha is far from the beaten path. The island teems with wildlife such as Northern rockhopper penguins, the endangered Tristan Albatross and sea lions while the surrounding upwellings attract vast numbers of Whales and Dolphins.

DAY 18-21 AT SEA

Today as you sail, you'll bask in the endless comforts of your ship. From the deck, marvel at the dramatic sea views. Relax with a nurturing facial treatment or massage in the spa or delve into the ship's learning resources. Or, simply take refuge in your cabin and enjoy the opportunity to rest.

DAY 22-23 CAPE TOWN

Starting our epic journey with one of the most spectacular city sceneries in Africa. Dominated by Table Mountain, Cape town is a cosmopolitan city with plenty of nearby splendid vineyards, wonderful harbour fronts and surprising restaurants where one can indulge on the delicious seafood.

Please Note:

Itinerary changes and surprising experiences are part of expedition cruise life. The world has a habit of amazing us with incredible things when we yield to the unexpected. Join us with

an open mind and a sense of adventure and you'll find that this can pay off in the most rewarding ways.

The Small Cruise Ship Collection

www.small-cruise-ships.com

small-cruise-ships.com

info@small-cruise-ships.com

YOUR SHIP: VEGA

YOUR SHIP:

Vega

VESSEL TYPE:

LENGTH:

PASSENGER CAPACITY:

BUILT/REFURBISHED:

Launched in 2022, this state of the art ship has been designed to journey to off the beaten path destinations and remote polar regions in style and comfort. The ship incorporates a PC5 ice-strengthened hull combined with extra-large stabilisers to make your journey as smooth as possible. Sophisticated Elegance. We know how important outdoor space is, so our spacious, relaxing public spaces provide wide open, unobstructed views throughout the ship. The destination will always be in view. Your Wellbeing. The safety & happiness of our guests is paramount to our 120-strong crew on board as well as our passionate expedition team who'll be serving up thrilling shore excursions and lasting memories. Cabin Types. Our 76 cabins including 6 suites have all the amenities you will need to feel comfortable including dressing gowns, hairdryers, personal safes and minibars. Our stylish cabins all have desks, a dressing area and comfy seating. En suite bathrooms all feature glass-enclosed rain showers.



The Small Cruise Ship Collection

www.small-cruise-ships.com

01432 507 280 (within UK)

info@small-cruise-ships.com | small-cruise-ships.com

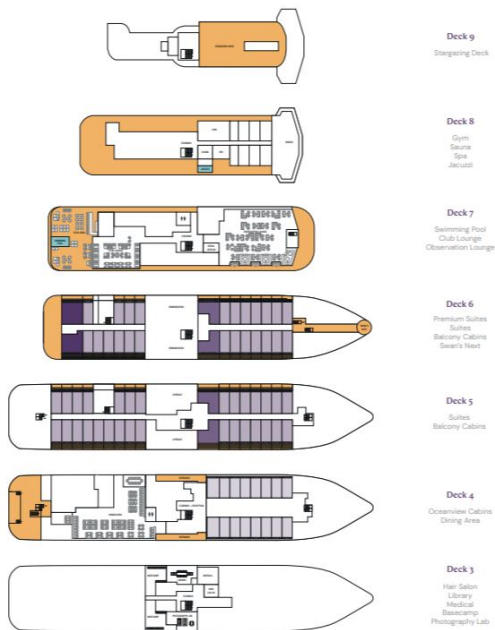
The Small Cruise Ship Collection

www.small-cruise-ships.com

small-cruise-ships.com

info@small-cruise-ships.com

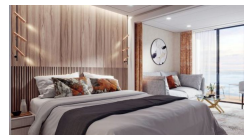
INSIDE YOUR SHIP



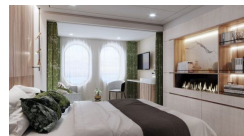
Balcony D5



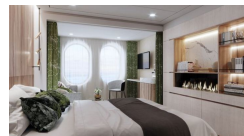
Balcony M5



Oceanview D4



Oceanview M4



Premium Suite



Suite





The Small Cruise
Ship Collection

www.small-cruise-ships.com

small-cruise-ships.com

info@small-cruise-ships.com

PRICING

16-Mar-2026 to 06-Apr-2026

Balcony M5	£12943 GBP pp
Balcony D5	£12280 GBP pp
Premium Suite	£20899 GBP pp
Suite	£19115 GBP pp
Oceanview M4	£10343 GBP pp
Oceanview D4	£9832 GBP pp