

# The Small Cruise Ship Collection

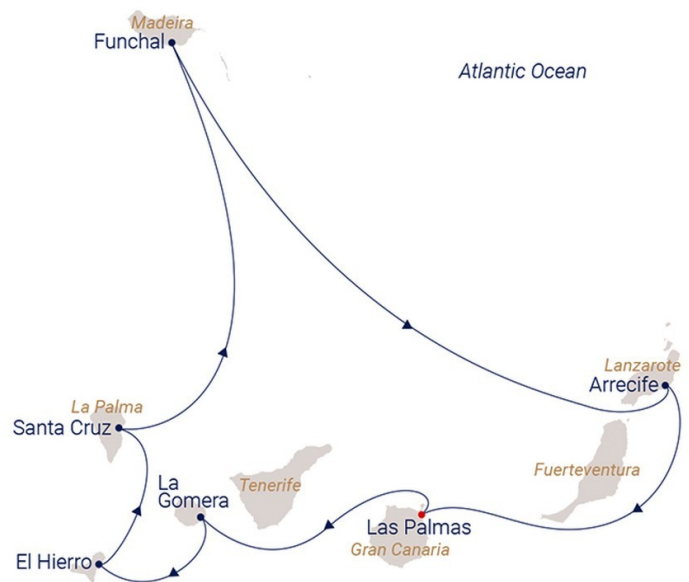
www.small-cruise-ships.com

small-cruise-ships.com

info@small-cruise-ships.com

## SIX ISLANDS IN AN EASTER BOUQUET - CANARY ISLANDS & MADEIRA SAILING CRUISE

Explore the diverse beauty of the Canary Islands and Madeira on this captivating journey. Begin in Las Palmas, then sail to La Gomera, where whales and dolphins frolic in the coastal waters. Discover the tranquil, nature-focused El Hierro, followed by the lush, flower-covered landscapes of La Palma. After a day at sea, immerse yourself in Madeira's breathtaking nature and mystical Levadas. Conclude your adventure in Lanzarote, where the surrealist art of Cesar Manrique contrasts with the island's striking black lava fields. This voyage blends natural wonders, cultural richness, and artistic marvels, offering a truly unique experience.



### ITINERARY

Day 1 Las Palmas, Gran Canaria

Departure 7:00 pm

With its black volcano almost 6,561 feet high and endless white beaches along the coastline, the island of Gran Canaria displays a huge variety of landscapes. It's a "continent in miniature" with rugged rock formations, dense pine forests, dry valleys and reservoirs inland, lush vegetation in the north, shimmering dune

The Small Cruise Ship Collection

www.small-cruise-ships.com

01432 507 280 (within UK)

info@small-cruise-ships.com | small-cruise-ships.com



## The Small Cruise Ship Collection

[www.small-cruise-ships.com](http://www.small-cruise-ships.com)

[small-cruise-ships.com](http://small-cruise-ships.com)

[info@small-cruise-ships.com](mailto:info@small-cruise-ships.com)

landscapes in the south and weirdly shaped cliffs in the west. Almost half the island has been registered by UNESCO as a Biosphere Reserve. The capital, Las Palmas, is no less colorful, with its port and history stretching back 500 years. The showpiece of this historic old town is the magnificent Santa Ana Cathedral.

Day 2 San Sebastián, La Gomera

Arrival 1:30 pm, Departure 11:00 pm

Many people consider La Gomera to be the most wildly romantic island in the Canaries. Rugged gorges, craggy hillsides, fertile valleys and evergreen cloud forests characterize the landscape. The Garajonay National Park, a UNESCO World Heritage Site, embraces the whole central mountain area and is an unusual little spot. Ancient bay trees, heather bushes as high as trees and tall ferns form a cloud forest where moss hangs from the trees and clings to gnarled branches - a truly mystical natural wonder that has existed for millions of years.

Day 3 Puerto de la Estaca, El Hierro

Arrival 8:00 am, Departure 1:30 pm

Volcanic activity has created a wildly romantic and varied natural landscape. It's a land of black lava desert and strange rock formations with oddly shaped, wind-defying juniper trees in the south, orchards, vineyards, fig and almond groves in the north, lush green meadows and pastures in the high plateaus, and perhaps the most beautiful pine forests in the archipelago.

El Hierro, the smallest and newest of the Canary Islands, is almost completely edged with steeply sloping, rugged cliffs and the spray from the surging ocean. UNESCO has designated it a Biosphere Reserve.

Day 4 Santa Cruz, La Palma

Arrival 8:00 am, Departure 1:30 pm

The combination of small size and great height make the lush green volcanic island of La Palma one of the steepest islands on earth. The white houses in the island's capital shine from wooded mountain slopes and the old town center of Santa Cruz is covered by a preservation order - principally because of its Canarian houses with their artistically decorated wooden balconies. The Caldera de Taburiente towers above the north of the island. With a diameter of 5.6 miles and surrounded by crater walls more than 6,561 feet high, it is one of the world's largest volcanic craters. Behind the caldera is the cloud forest of Los Tilos. The Biosphere Reserve was extended by UNESCO to cover the whole island of La Palma.

Day 5 Day at sea

Spend the day sunbathing, enjoy the fresh wind breeze, and relax into the day!

Day 6 Funchal, Madeira

The Small Cruise Ship Collection

[www.small-cruise-ships.com](http://www.small-cruise-ships.com)

01432 507 280 (within UK)

[info@small-cruise-ships.com](mailto:info@small-cruise-ships.com) | [small-cruise-ships.com](http://small-cruise-ships.com)





## The Small Cruise Ship Collection

[www.small-cruise-ships.com](http://www.small-cruise-ships.com)

[small-cruise-ships.com](http://small-cruise-ships.com)

[info@small-cruise-ships.com](mailto:info@small-cruise-ships.com)

Arrival 8:00 am

The island of eternal spring, with its mild climate all year round and entire network of man-made irrigation channels, is a garden of flowers with green mountains, charming valleys, rugged coastlines and breathtaking views over the sea. Hydrangeas bloom in abundance on the streets, creating hedges of flowers, and in the capital Funchal, every balcony has a colorful floral display. Houses, palaces, churches and monasteries nestle in steep winding lanes on the towering mountain slopes. The picturesque Monte, where high society used to reside, is set high up in the hills and sends its famous wicker toboggans down the steep Caminho hill all the way to Funchal.

[Day 7 Funchal, Madeira](#)

Departure 5:00 pm

The island of eternal spring, with its mild climate all year round and entire network of man-made irrigation channels, is a garden of flowers with green mountains, charming valleys, rugged coastlines and breathtaking views over the sea. Hydrangeas bloom in abundance on the streets, creating hedges of flowers, and in the capital Funchal, every balcony has a colorful floral display. Houses, palaces, churches and monasteries nestle in steep winding lanes on the towering mountain slopes. The picturesque Monte, where high society used to reside, is set high up in the hills and sends its famous wicker toboggans down the steep Caminho hill all the way to Funchal.

[Day 8 Day under full sails](#)

Climbing the rigging, untying ropes, setting sails - today is all about sailing. Time to lean back and relax in the deck chair and watch the passionate crew hoisting the sails by hand.

[Day 9 Arrecife, Lanzarote](#)

Arrival 8:00 am, Departure 1:30 pm

The "Island of Fire", a UNESCO Biosphere Reserve, has been continually recreated by volcanic eruptions. A third of Lanzarote is a bizarre lunar landscape of barren, beige-grey lines of hills and "fire mountains". In sharp contrast to this are the snow white houses, golden beaches and sparse green vegetation. Its quaint wine-growing areas of La Geria have been declared an all-embracing art form by the Museum of Modern Art. The painter, sculptor and architect Cesar Manrique understood art as the link between man and nature and made a vital contribution to the look of his island home through his artistic creations.

[Day 10 Las Palmas, Gran Canaria](#)

Arrival 7:00 am

With its black volcano almost 6,561 feet high and endless white beaches along the coastline, the island of Gran Canaria displays a huge variety of landscapes. It's a "continent in miniature" with rugged rock formations, dense pine forests, dry valleys and

The Small Cruise Ship Collection

[www.small-cruise-ships.com](http://www.small-cruise-ships.com)

01432 507 280 (within UK)

[info@small-cruise-ships.com](mailto:info@small-cruise-ships.com) | [small-cruise-ships.com](http://small-cruise-ships.com)



The Small Cruise  
Ship Collection

[www.small-cruise-ships.com](http://www.small-cruise-ships.com)

[small-cruise-ships.com](http://small-cruise-ships.com)

[info@small-cruise-ships.com](mailto:info@small-cruise-ships.com)

reservoirs inland, lush vegetation in the north, shimmering dune landscapes in the south and weirdly shaped cliffs in the west. Almost half the island has been registered by UNESCO as a Biosphere Reserve. The capital, Las Palmas, is no less colorful, with its port and history stretching back 500 years. The showpiece of this historic old town is the magnificent Santa Ana Cathedral.

Please note:

Itineraries are subject to change.



# The Small Cruise Ship Collection

[www.small-cruise-ships.com](http://www.small-cruise-ships.com)

[small-cruise-ships.com](http://small-cruise-ships.com)

[info@small-cruise-ships.com](mailto:info@small-cruise-ships.com)

## YOUR SHIP: SEA CLOUD SPIRIT

**YOUR SHIP:**

**Sea Cloud Spirit**

**VESSEL TYPE:**

**LENGTH:**

**PASSENGER CAPACITY:**

**BUILT/REFURBISHED:**

Building a three-mast full-rigged ship with traditional rigging in the 21st century may seem a little unusual. For SEA CLOUD CRUISES it is a commitment to true passion for sailing. With her clear, classic line she follows the example of her elegant windjammer sisters, but goes completely new ways. An entire deck with balcony cabins, an exclusive wellness and SPA area, a fitness room with sea view, a bistro on deck as an evening alternative to "fine dining" in the restaurant - the youngest member of the SEA CLOUD family offers plenty of room for individuality in addition to genuine windjammer romance. The SEA CLOUD SPIRIT combines traditional windjammer experience with 21st century comfort with up to 136 passengers. Cabins Even more comfort: of the 69 cabins from the owner suite to the superior outside cabin, almost half have balconies or windows to open. Public areas Spacious decks, a generous wellness and SPA area, fitness with sea view and much more: on board the SEA CLOUD SPIRIT, one does not only enjoy the freedom under sails.



The Small Cruise Ship Collection

[www.small-cruise-ships.com](http://www.small-cruise-ships.com)

**01432 507 280** (within UK)

[info@small-cruise-ships.com](mailto:info@small-cruise-ships.com) | [small-cruise-ships.com](http://small-cruise-ships.com)

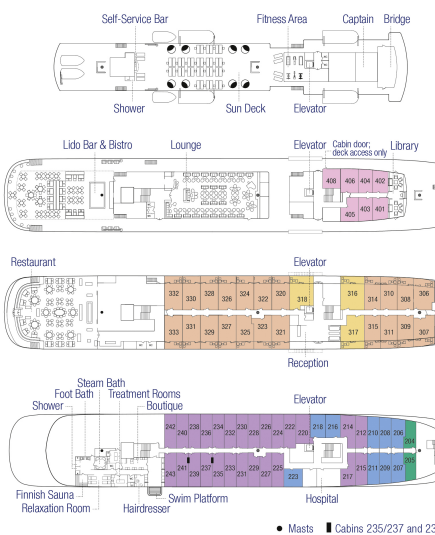
# The Small Cruise Ship Collection

www.small-cruise-ships.com

small-cruise-ships.com

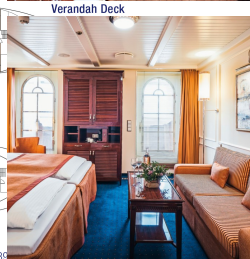
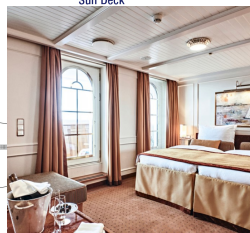
info@small-cruise-ships.com

## INSIDE YOUR SHIP



Category A: Suites with balcony. From

Category B: Junior suites with balcony



### Cabin Categories:

Cat. A ■ Suites with balcony  
Cat. B ■ Junior suites with balcony

Cat. C ■ De luxe lido cabins, outside  
Cat. D ■ De luxe cabins, outside

Cat. E ■ Superior cabins, outside  
Cat. F ■ Superior single cabins, outside

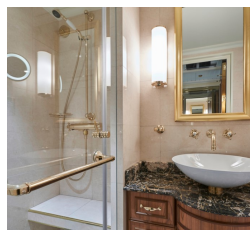
Category C: De luxe lido cabins, outside. From

Category D: De luxe cabins, outside.

Category E: Superior cabins, outside. From

Category F: Superior single cabins, outside

Guaranteed double cabins. From



The Small Cruise Ship Collection  
www.small-cruise-ships.com

01432 507 280 (within UK)

info@small-cruise-ships.com | small-cruise-ships.com





# The Small Cruise Ship Collection

[www.small-cruise-ships.com](http://www.small-cruise-ships.com)

[small-cruise-ships.com](http://small-cruise-ships.com)

[info@small-cruise-ships.com](mailto:info@small-cruise-ships.com)

## PRICING

17-Apr-2025 to 26-Apr-2025

Guaranteed double cabins. From **£3946 GBP pp**

Category E: Superior cabins, outside. From **£4212 GBP pp**

Category D: De luxe cabins, outside. From **£4867 GBP pp**

Category F: Superior single cabins, outside. From **£5224 GBP pp**

Category C: De luxe lido cabins, outside. From **£5565 GBP pp**

Category B: Junior suites with balcony. From **£6561 GBP pp**

Category A: Suites with balcony. From **£7540 GBP pp**