

The Small Cruise Ship Collection

www.small-cruise-ships.com



small-cruise-ships.com

info@small-cruise-ships.com

SHETLAND, ORKNEY & HEBRIDES - LUXURY SCOTLAND CRUISE

From Edinburgh to Glasgow, PONANT brings you aboard Le Bellot for an exceptional cruise to Celtic lands following an 8-day itinerary along the magnificent Scottish archipelagos of Shetland Islands, Orkney Islands and Hebrides Islands. Throughout your journey, you will benefit from an excursion included per person per port of call, to choose from a selection offered by PONANT. During this cruise, admire the mysterious Calanais Standing Stones when your ship calls at Stornoway; visit the Ben Nevis distillery from Fort Williams to dive into the Scottish way of life; or discover crofting in the Shetland Islands, from Lerwick, and meet shepherds and their dogs during a memorable demonstration. The diversity of experiences on offer promises you intense and varied moments (to discover the full range of excursions, go to the itinerary tab). Departing from Edinburgh, city of history and labelled city of literature by UNESCO, you will first call at the port of Lerwick in the Shetland Islands. This port is well known because just a few kilometres inland lie the remarkable ruins of Scalloway Castle, built in 1600. You will then head for the Orkney archipelago and its windswept moorland landscape. Le Bellot will sail towards Kirkwall, capital of the Orkney Islands, where numerous seabirds, such as gannets and European shags, have taken up residence. You will also discover the Isle of Skye, known for its rich Gaelic culture, its famous bridge, and its stunning scenery, Stornoway, the largest city in the Hebrides with a warm and friendly atmosphere. You will then sail towards Fort William. This harbour town on the shores of Loch Linnhe is steeped in Scottish history and tradition, close to the beautiful and spectacular scenery of Glencoe. Finally, you will reach Glasgow,

Scotland's warm cultural capital with a rich artistic and architectural heritage, your



disembarkation port.

ITINERARY

Day 1 ROSYTH (EDINBURGH), SCOTLAND

Situated on the southern shore of the Firth of Forth opposite to Rosyth, the great city of Edinburgh has served as Scotland's capital since the 15th century. Although no longer the largest city in the country, it remains the political, religious, and cultural focus of Scottish pride. Edinburgh Castle, in the very center of

The Small Cruise Ship Collection

www.small-cruise-ships.com

01432 507 280 (within UK)

info@small-cruise-ships.com | small-cruise-ships.com



The Small Cruise Ship Collection

www.small-cruise-ships.com

small-cruise-ships.com

info@small-cruise-ships.com

the city, is one end of the world famous Royal Mile that leads through the Old Town to the Palace of Holyrood, the Queen's official residence in Scotland. A UNESCO World Heritage site, it is a wonderful place to shop and to sample local delicacies, like haggis and the whisky for which Scotland is renowned.

Day 2 AT SEA

During your day at sea, make the most of the many services and activities on board. Treat yourself to a moment of relaxation in the spa or stay in shape in the fitness centre. Depending on the season, let yourself be tempted by the swimming pool or a spot of sunbathing. This day without a port of call will also be an opportunity to enjoy the conferences or shows proposed on board, to do some shopping in the boutique or to meet the PONANT photographers in their dedicated space. As for lovers of the open sea, they will be able to visit the ship's upper deck to admire the spectacle of the waves and perhaps be lucky enough to observe marine species. A truly enchanted interlude, combining comfort, rest and entertainment.

Day 3 LERWICK, SHETLAND ISLANDS

The small and charming capital of the Shetland Islands, with its sea front of old houses and narrow streets, offering travellers its old districts and a warm port atmosphere. Geopark Shetland, a UNESCO World Heritage Site, is located to the north. Incredibly well-preserved archaeological sites and ruins prove that the islands' occupation dates back to the first Neolithic colonies. The Shetland Museum and Archives recounts the Shetlands' history of heritage and culture: Lerwick's abundant waters were

even fished by the Dutch in the past.

Day 4 KIRKWALL, ORKNEY

Capital of the Orkney archipelago, Kirkwall, which means "church bay", is an ideal stopover before continuing on to the Northern Isles. Sheltered in a wide bay, the lively town welcomes the visitor with its charming paved alleyways edged by old houses and craft shops. Tankerness House, the oldest homestead in the town, is a must-see landmark. But the true architectural treasure of the aptly named Kirkwall is none other than its remarkable red and gold stone cathedral. And because whisky is inseparable from Scotland's identity, stop at the Highland Park Distillery for a highly instructive visit.

Day 5 STORNOWAY, HEBRIDES

Discover Lewis, the largest island of the Hebrides, considered to be the cradle of Gaelic culture. Here, the peat- and heather-covered valleys and lochs stretch on to infinity, and numerous bird colonies have taken up residence in the long, jagged coastlines where. Not far from Stornoway, the island's main town, built by the Vikings in the 9th century stands one of Scotland's most prominent prehistoric sites: The Standing Stones of Callanish. Dating back to more than 3,000 years B.C., these imposing stones placed in a cruciform pattern were laid out according to the moon and stars and their main purpose was to keep track of seasonal cycles, as this was essential for farmers at the time.

Day 6 PORTREE, ISLE OF SKYE

The Small Cruise Ship Collection

www.small-cruise-ships.com

01432 507 280 (within UK)

info@small-cruise-ships.com | small-cruise-ships.com



The Small Cruise Ship Collection

www.small-cruise-ships.com

small-cruise-ships.com

info@small-cruise-ships.com

Nestling in the crux of a gorgeous bay, Portree reflects the magnificence of the grandiose Isle of Skye as well as being its main town. Apart from the charm of its colourful houses, the town's outstanding location on the banks of a loch makes it a very pleasant place to be. From its colourful harbour bustling with local craftsmen's shops, you can take in a stunning view of the surrounding hills. Before trekking through the wilderness and drinking in the natural beauty of the Isle of Skye, check out some of the beautiful images in the Aros Centre.

Day 7 FORT WILLIAM

A port town on the eastern shore of Loch Linnhe, Fort William is sometimes described as the "Outdoor Capital of the UK." Because it sits at the base of Ben Nevis, the highest peak in the British Isles, and is in close proximity to the dramatic landscape of Glencoe, it is a popular destination for hikers and rock climbers. For those looking for a less adventurous experience, the nearby Ben Nevis Distillery offers tours and tastings, and Old Fort and Old Inverlochy Castle are interesting historical sites.

Day 8 GLASGOW, SCOTLAND

In the heart of the Clyde Valley, the bustling city of Glasgow contrasts starkly with the wild beauty of the surrounding countryside. Scotland's biggest city overflows with landmarks from its extensive artistic heritage and outstanding architectural tradition. The city's chequerboard layout makes walking through the major pedestrian thoroughfares easy: go with the flow and

let the lively street atmosphere take you past the many Victorian monuments. Don't miss the collections on display in the numerous museums and art galleries. The Kelvingrove Art Gallery and Museum is an outstanding example.

Please Note:

Itineraries are subject to change.

The Small Cruise Ship Collection
www.small-cruise-ships.com

01432 507 280 (within UK)

info@small-cruise-ships.com | small-cruise-ships.com



The Small Cruise Ship Collection

www.small-cruise-ships.com



small-cruise-ships.com

info@small-cruise-ships.com

YOUR SHIP: LE BELLOT

YOUR SHIP: Le Bellot

VESSEL TYPE:

LENGTH:

PASSENGER CAPACITY:

BUILT/REFURBISHED:

Featuring innovative and environmentally-friendly equipment, elegantly designed staterooms, spacious suites with large windows, and lounge areas that open onto the outside, this new limited-capacity yacht boasting just 92 staterooms and suites will offer you a truly unique cruising experience. As the first ship in a new series, Le Bellot will embody the unique atmosphere of a subtle blend of exploration, refinement, intimacy and comfort. Aboard this ship that flies the French flag, you will experience the incomparable pleasure of an intimate cruise, with the possibility of exploring an ever-increasing range of destinations in an ethnic-chic ambiance with luxury service. Experience a luxurious setting where the accent is on authenticity and passion for travel. **RESTAURANTS** As it is an essential part of French culture, gastronomy will naturally have pride of place aboard this new ship. To the back of Deck 4, you will find a 260 m² panoramic restaurant which can accommodate all of our passengers in a single sitting. Designed differently to that on our other ships, this dining area, which opens onto the outside, will have a buffet of salads, desserts and cheeses at your disposal. Our discreet and attentive crew will provide table service for hot meals. In a relaxed atmosphere, an outdoor grill on Deck 3 will

serve grilled meats with a variety of salads and desserts. **PUBLIC AREAS** Le Bellot has many common areas that are designed and equipped to meet all of your needs while preserving the intimacy of each passenger. A 140 m² reception area includes: A reception/concierge desk, An excursions desk, The ship's administrative services, The sales office, manned by our Guest Relations Officer, Our 50 m² boutique which sells clothing, jewellery, beauty products, postcards and various accessories, Toilets accessible to passengers with reduced mobility. A new hydraulic platform with adjustable height provides: Easier boarding than on any other cruise ship, Easier Zodiac embarkation and disembarkation for expeditions, Easier access to the sea for swimming and practising various water sports such as kayaking or paddle-boarding. A pool deck offering: A pool with a panoramic view, equipped with a counter-current swimming system, A pleasant solarium, An outdoor bar and lounge with armchairs and sofas. A 200 m² main lounge which can accommodate all of our passengers to share convivial moments and to host activities organised during the day or evening. Lastly, a theatre that seats 188, equipped with: The latest sound and lighting technology, A LED wall as the stage backdrop, for the projection of high-resolution images and videos. Please click the following links to read more about Ponant and the other Ponant



The Small Cruise Ship Collection

www.small-cruise-ships.com



small-cruise-ships.com

info@small-cruise-ships.com



cruise ships.



The Small Cruise Ship Collection

www.small-cruise-ships.com

01432 507 280 (within UK)

info@small-cruise-ships.com | small-cruise-ships.com



The Small Cruise Ship Collection

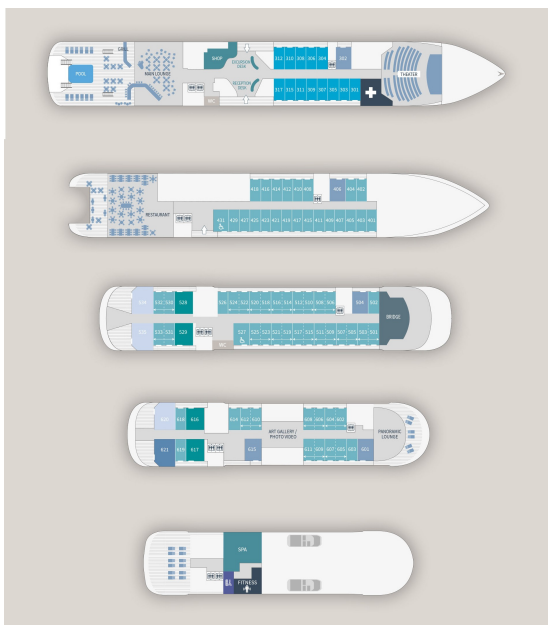
www.small-cruise-ships.com



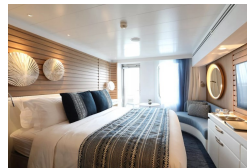
small-cruise-ships.com

info@small-cruise-ships.com

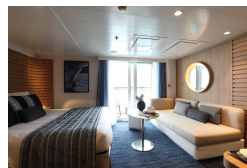
INSIDE YOUR SHIP



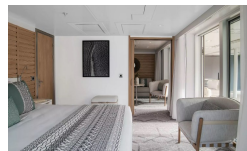
Deluxe Stateroom



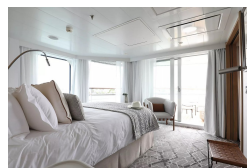
Deluxe Suite



Grand Deluxe Suite



Owner's Suite



Prestige Stateroom Deck 4

Prestige Stateroom Deck 5

Prestige Stateroom Deck 6

Prestige Suite Deck 5

Prestige Suite Deck 6

Privilege Suite

The Small Cruise Ship Collection

www.small-cruise-ships.com

small-cruise-ships.com

info@small-cruise-ships.com

PRICING

31-May-2025 to 07-Jun-2025

| | |
|---------------------------|--------------|
| Grand Deluxe Suite | £7970 GBP pp |
| Deluxe Stateroom | £4360 GBP pp |
| Prestige Stateroom Deck 4 | £4610 GBP pp |
| Privilege Suite | £7730 GBP pp |
| Owner's Suite | £9670 GBP pp |
| Prestige Suite Deck 6 | £7530 GBP pp |
| Prestige Suite Deck 5 | £7290 GBP pp |
| Prestige Stateroom Deck 6 | £4950 GBP pp |
| Deluxe Suite | £6750 GBP pp |
| Prestige Stateroom Deck 5 | £4760 GBP pp |

07-Jun-2025 to 14-Jun-2025

| | |
|---------------------------|--------------|
| Prestige Stateroom Deck 4 | £5430 GBP pp |
| Owner's Suite | £9670 GBP pp |
| Privilege Suite | £9100 GBP pp |
| Prestige Suite Deck 6 | £8870 GBP pp |
| Prestige Suite Deck 5 | £8580 GBP pp |
| Grand Deluxe Suite | £9380 GBP pp |
| Prestige Stateroom Deck 6 | £5830 GBP pp |
| Prestige Stateroom Deck 5 | £5600 GBP pp |
| Deluxe Suite | £7950 GBP pp |
| Deluxe Stateroom | £5140 GBP pp |

04-Oct-2025 to 11-Oct-2025

| | |
|---------------------------|--------------|
| Prestige Suite Deck 5 | £6860 GBP pp |
| Privilege Suite | £7280 GBP pp |
| Prestige Suite Deck 6 | £7090 GBP pp |
| Owner's Suite | £9670 GBP pp |
| Prestige Stateroom Deck 4 | £4340 GBP pp |
| Grand Deluxe Suite | £7500 GBP pp |
| Deluxe Suite | £6360 GBP pp |
| Prestige Stateroom Deck 6 | £4660 GBP pp |
| Deluxe Stateroom | £4100 GBP pp |
| Prestige Stateroom Deck 5 | £4480 GBP pp |

ADDITIONAL CHARGES:

Port Taxes & Fees 310 GBP pp