

The Small Cruise Ship Collection

www.small-cruise-ships.com

small-cruise-ships.com

info@small-cruise-ships.com

THE SEYCHELLES SAILING CRUISE (NOVEMBER TO APRIL)

Isolated in the Indian Ocean and the only mid-ocean islands of granite formation to be found on earth, the Seychelles archipelago is often mentioned in the same breath as the lost 'Garden of Eden.' The highest peaks of a submerged mountain range that broke apart from the supercontinent of Gondwana millions of years ago, the Seychelles' inner islands are the most ancient islands on earth - no other mid-ocean isles of granite formation can be found anywhere else. This curious geological feature was one of several curiosities about the islands that led the famed British General, Charles Gordon, to declare Seychelles the site of the biblical Garden of Eden. Situated some 1,500 kilometers east of mainland Africa, and northeast of the island of Madagascar, this tiny island group boasts a population of just 90,000 inhabitants, with a warm, tropical climate all year-round and some of the most stunningly beautiful beaches in the world. Mahe, the largest island, is home to the majority of the population and represents the archipelago's commercial and transportation hub, with the country's only international airport linking the islands to the rest of the globe. The island is characterised by its towering granite peaks, lush mist forests and dozens of striking coves and beaches. The second largest island, Praslin, is home to the legendary Vallee de Mai, the UNESCO World Heritage Site where the Coco de Mer grows in abundance. This double coconut, which curiously resembles the shape of a woman's pelvis, was another facet of General Gordon's theory about Seychelles as the Garden of Eden - he believed it to be the real forbidden fruit. La Digue, the third-most populous island, moves at an even slower pace: bicycles remain the most common mode of transportation, for

both its residents and visiting tourists. The huge granite boulders that adorn the coastline at Anse Source D'Argent have led some to believe that it could very well be the most photographed beach in the world. While Mahe, Praslin and La Digue may be the principal islands, dozens of smaller 'satellite' isles nearby offer further opportunity to explore and admire. Every island has a character and charm all of its own, with colorful individual histories and unique natural features, some with steep granite cliffs and others comprising pristine coral atolls. Together, they make up a surprisingly diverse destination of great natural beauty, rare flora and fauna that have been cocooned in isolation for millions of years, and a friendly multi-cultural people eager to welcome you to



their shores.

The Small Cruise Ship Collection

www.small-cruise-ships.com

01432 507 280 (within UK)

info@small-cruise-ships.com | small-cruise-ships.com



The Small Cruise Ship Collection

www.small-cruise-ships.com

small-cruise-ships.com

info@small-cruise-ships.com

ITINERARY

Day 1 - Mahe, embarkation

Embarkation at the Inter-Island Quay at 1030hrs, followed by the Captain's welcome briefing. Depart Port Victoria at 1200hrs, sailing from Mahe to a late afternoon anchorage at Round Island, just off the isle of Praslin. In the evening, introduce yourself to Creole cuisine with a welcome barbecue dinner onboard.

Day 2 - Praslin

Sail to Praslin, Seychelles' second-largest inhabited island, for disembarkation to the famous World Heritage Site, the Vallee de Mai Nature Reserve. This ancient forest is home to the curiously shaped double coconut, the coco de mer, as well as the Black Parrot, unique to Praslin. Explore the valley's eerie pathways beneath its canopy of massive palms, before returning onboard for afternoon opportunities to dive, snorkel or enjoy other water sports.

Day 3 - La Digue

A morning sail brings the vessel to La Digue, a sleepy island community where ox-carts and bicycles still remain the most common mode of transportation throughout the island. La Digue is home to the endemic Seychelles Paradise Flycatcher, and is perhaps most famous for its massive granite boulder formations at Anse Source d'Argent, which is thought to be the most

photographed beach on earth. Explore the entire island by bicycle, perhaps stopping by Union Estate, a sprawling network of traditional island activities, including a copra mill, vanilla plantation, and shipyard.

Day 4 - Grande Soeur and Petite Soeur

In the morning the vessel sails toward Grande Soeur and Petite Soeur (the Sisters) for excellent snorkelling and diving, and for a relaxing visit of these unique and completely uninhabited tropical islands. In the afternoon, visit Coco Island, one of Seychelles' tiny granite jewels, a fantastic spot for snorkelling within a kaleidoscope of tropical fish.

Day 5 - Booby Island and Aride Island

Sail to Booby Island for a morning of diving and water sports. After lunch, sail to Aride Island, a globally important nature reserve with more native bird species than any other island, including five endemics and the world's largest population of 3 species (Lesser Noddy, Audubon's Shearwater and Seychelles Warbler). The nature trail leads to a spectacular cliff-top view with the largest frigatebird roost outside of Aldabra. Aride is the only natural location in the world for Wright's Gardenia and 400 species of fish have been recorded around the island.

Day 6 - Curieuse

In the morning disembark at Curieuse for a visit of this virtually uninhabited island. Experience the island's vast mangrove

The Small Cruise Ship Collection
www.small-cruise-ships.com

01432 507 280 (within UK)

info@small-cruise-ships.com | small-cruise-ships.com



forests and its giant tortoise farm, along with the historic ruins of this former leper colony. After a barbecue lunch on the island, enjoy an array of water sports or simply relax and enjoy the island's beautiful beach and turquoise waters.

Day 7 - Ile Seche

After breakfast, enjoy a leisurely sail back towards Mahe, with a last stop at Ile Seche for more snorkelling or diving, followed by a farewell barbecue. The vessel then sails into Port Victoria for an overnight stay.

Day 8 - Disembarkation

Disembarkation at the Inter-Island Quay at 08.30hrs.

Please Note:

Your safety and comfort are our highest priority. In the event of adverse conditions, all itineraries are subject to change at the captain's discretion.

Be sure to bring plenty of sun-screen, a cap or hat and sunglasses - Seychelles is generally warm and sunny throughout the year and the sun's rays can be especially impactful onboard the vessel, due to the reflection from the sea.

Bring suitable footwear for walking on deck and on the beach, as well as in shallow water (some island visits require embarking & disembarking from dinghies in shallow water).



The Small Cruise Ship Collection

www.small-cruise-ships.com

small-cruise-ships.com

info@small-cruise-ships.com

YOUR SHIP: SV SEA PEARL

YOUR SHIP:

SV Sea Pearl

VESSEL TYPE:

LENGTH:

PASSENGER CAPACITY:

BUILT/REFURBISHED:

This beautiful wooden sailing vessel was built in Holland in 1920. Completely rebuilt and refurbished she now sails the islands of the Seychelles, providing an active and traditional experience. ACCOMMODATION 6 Double-bed cabins +1 bunk (Category A) 2 Triple cabins with 3 bunk beds (Category B) 4 Showers - 3 Toilets - 1 Deck Shower Air-conditioned Dining Salon TV, DVD, stereo, ice-machine, washing machine, dryer Upper Sun Deck and Bow Net for sun bathing Covered Back Deck Lounge



The Small Cruise
Ship Collection

www.small-cruise-ships.com

01432 507 280 (within UK)

info@small-cruise-ships.com | small-cruise-ships.com

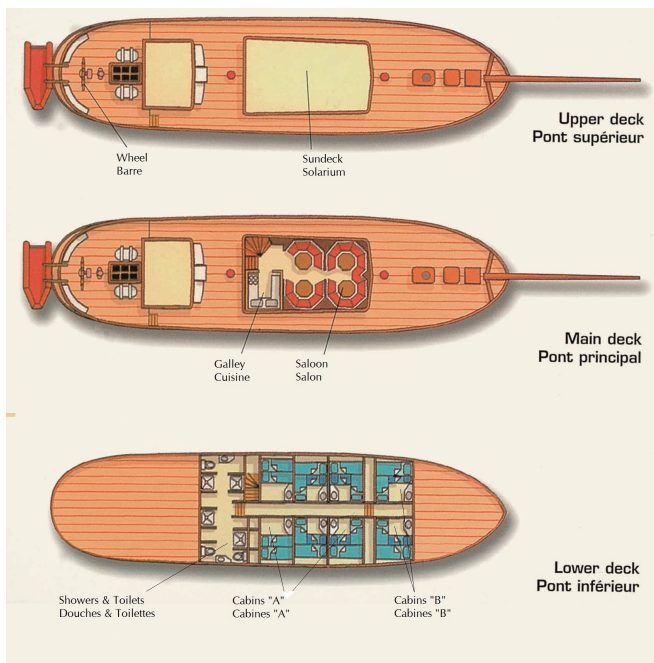
The Small Cruise Ship Collection

www.small-cruise-ships.com

small-cruise-ships.com

info@small-cruise-ships.com

INSIDE YOUR SHIP



Category A Double



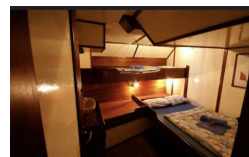
Category A Single



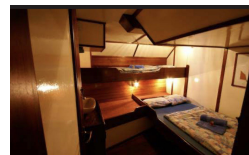
Category A Triple



Category B Single



Category B Twin





The Small Cruise Ship Collection

www.small-cruise-ships.com

small-cruise-ships.com

info@small-cruise-ships.com

PRICING

02-Nov-2024 to 09-Nov-2024

Category B Twin	£1625 GBP pp
Category A Triple	£1737 GBP pp
Category A Double	£1882 GBP pp
Category B Single	£2110 GBP pp
Category A Single	£2821 GBP pp

30-Nov-2024 to 07-Dec-2024

Category B Twin	£1625 GBP pp
Category A Triple	£1737 GBP pp
Category A Double	£1882 GBP pp
Category B Single	£2110 GBP pp
Category A Single	£2821 GBP pp

09-Nov-2024 to 16-Nov-2024

Category B Twin	£1625 GBP pp
Category A Triple	£1737 GBP pp
Category A Double	£1882 GBP pp
Category B Single	£2110 GBP pp
Category A Single	£2821 GBP pp

07-Dec-2024 to 14-Dec-2024

Category B Twin	£1625 GBP pp
Category A Triple	£1737 GBP pp
Category A Double	£1882 GBP pp
Category B Single	£2110 GBP pp
Category A Single	£2821 GBP pp

16-Nov-2024 to 23-Nov-2024

Category B Twin	£1625 GBP pp
Category A Triple	£1737 GBP pp
Category A Double	£1882 GBP pp
Category B Single	£2110 GBP pp
Category A Single	£2821 GBP pp

14-Dec-2024 to 21-Dec-2024

Category B Twin	£1625 GBP pp
Category A Triple	£1737 GBP pp
Category A Double	£1882 GBP pp
Category B Single	£2110 GBP pp
Category A Single	£2821 GBP pp

23-Nov-2024 to 30-Nov-2024

Category B Twin	£1625 GBP pp
Category A Triple	£1737 GBP pp
Category A Double	£1882 GBP pp
Category B Single	£2110 GBP pp
Category A Single	£2821 GBP pp



The Small Cruise Ship Collection

www.small-cruise-ships.com

small-cruise-ships.com

info@small-cruise-ships.com

PRICING

21-Dec-2024 to 28-Dec-2024

Category B Twin	£1625 GBP pp
Category A Triple	£1737 GBP pp
Category A Double	£1882 GBP pp
Category B Single	£2110 GBP pp
Category A Single	£2821 GBP pp

18-Jan-2025 to 25-Jan-2025

Category B Twin	£1154 GBP pp
Category A Triple	£1235 GBP pp
Category A Double	£1337 GBP pp
Category B Single	£1500 GBP pp
Category A Single	£2007 GBP pp

28-Dec-2024 to 04-Jan-2025

Category B Twin	£1154 GBP pp
Category A Triple	£1235 GBP pp
Category A Double	£1337 GBP pp
Category B Single	£1500 GBP pp
Category A Single	£2007 GBP pp

25-Jan-2025 to 01-Feb-2025

Category B Twin	£1625 GBP pp
Category A Triple	£1737 GBP pp
Category A Double	£1882 GBP pp
Category B Single	£2110 GBP pp
Category A Single	£2821 GBP pp

04-Jan-2025 to 11-Jan-2025

Category B Twin	£1154 GBP pp
Category A Triple	£1235 GBP pp
Category A Double	£1337 GBP pp
Category B Single	£1500 GBP pp
Category A Single	£2007 GBP pp

01-Feb-2025 to 08-Feb-2025

Category B Twin	£1625 GBP pp
Category A Triple	£1737 GBP pp
Category A Double	£1882 GBP pp
Category B Single	£2110 GBP pp
Category A Single	£2821 GBP pp

11-Jan-2025 to 18-Jan-2025

Category B Twin	£1154 GBP pp
Category A Triple	£1235 GBP pp
Category A Double	£1337 GBP pp
Category B Single	£1500 GBP pp
Category A Single	£2007 GBP pp



The Small Cruise Ship Collection

www.small-cruise-ships.com

small-cruise-ships.com

info@small-cruise-ships.com

PRICING

08-Feb-2025 to 15-Feb-2025

Category B Twin	£1625 GBP pp
Category A Triple	£1737 GBP pp
Category A Double	£1882 GBP pp
Category B Single	£2110 GBP pp
Category A Single	£2821 GBP pp

08-Mar-2025 to 15-Mar-2025

Category B Twin	£1625 GBP pp
Category A Triple	£1737 GBP pp
Category A Double	£1882 GBP pp
Category B Single	£2110 GBP pp
Category A Single	£2821 GBP pp

15-Feb-2025 to 22-Feb-2025

Category B Twin	£1625 GBP pp
Category A Triple	£1737 GBP pp
Category A Double	£1882 GBP pp
Category B Single	£2110 GBP pp
Category A Single	£2821 GBP pp

15-Mar-2025 to 22-Mar-2025

Category B Twin	£1625 GBP pp
Category A Triple	£1737 GBP pp
Category A Double	£1882 GBP pp
Category B Single	£2110 GBP pp
Category A Single	£2821 GBP pp

22-Feb-2025 to 01-Mar-2025

Category B Twin	£1625 GBP pp
Category A Triple	£1737 GBP pp
Category A Double	£1882 GBP pp
Category B Single	£2110 GBP pp
Category A Single	£2821 GBP pp

22-Mar-2025 to 29-Mar-2025

Category B Twin	£1625 GBP pp
Category A Triple	£1737 GBP pp
Category A Double	£1882 GBP pp
Category B Single	£2110 GBP pp
Category A Single	£2821 GBP pp

01-Mar-2025 to 08-Mar-2025

Category B Twin	£1625 GBP pp
Category A Triple	£1737 GBP pp
Category A Double	£1882 GBP pp
Category B Single	£2110 GBP pp
Category A Single	£2821 GBP pp



The Small Cruise Ship Collection

www.small-cruise-ships.com

small-cruise-ships.com

info@small-cruise-ships.com

PRICING

29-Mar-2025 to 05-Apr-2025

Category B Twin	£1625 GBP pp
Category A Triple	£1737 GBP pp
Category A Double	£1882 GBP pp
Category B Single	£2110 GBP pp
Category A Single	£2821 GBP pp

ADDITIONAL CHARGES:

Conservation Fee 200 EUR pp

05-Apr-2025 to 12-Apr-2025

Category B Twin	£1625 GBP pp
Category A Triple	£1737 GBP pp
Category A Double	£1882 GBP pp
Category B Single	£2110 GBP pp
Category A Single	£2821 GBP pp

12-Apr-2025 to 19-Apr-2025

Category B Twin	£1625 GBP pp
Category A Triple	£1737 GBP pp
Category A Double	£1882 GBP pp
Category B Single	£2110 GBP pp
Category A Single	£2821 GBP pp

19-Apr-2025 to 26-Apr-2025

Category B Twin	£1625 GBP pp
Category A Triple	£1737 GBP pp
Category A Double	£1882 GBP pp
Category B Single	£2110 GBP pp
Category A Single	£2821 GBP pp