



The Small Cruise
Ship Collection

www.small-cruise-ships.com

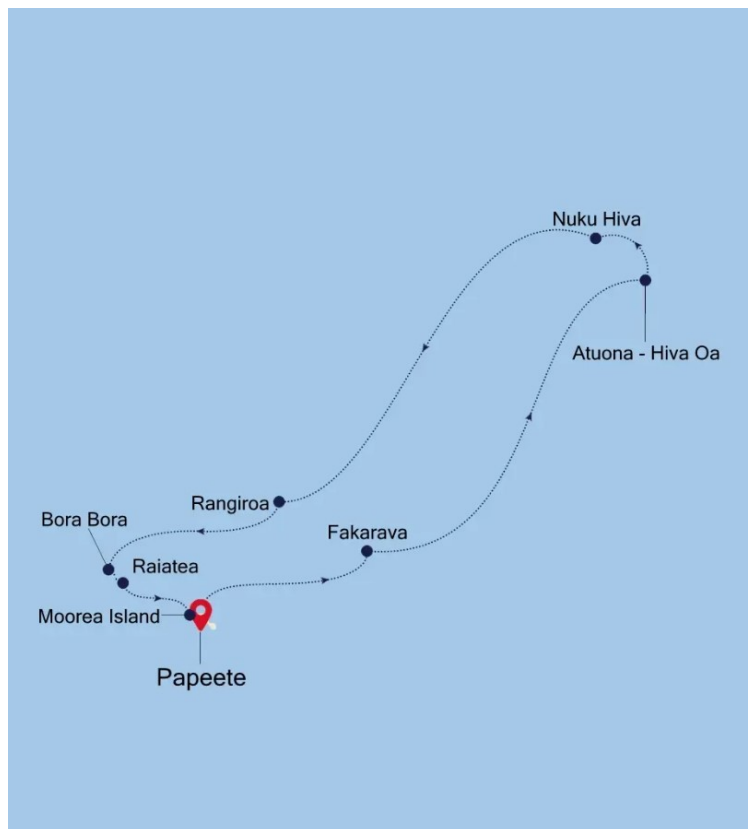


small-cruise-ships.com

info@small-cruise-ships.com

PAPEETE TO PAPEETE - FRENCH POLYNESIA LUXURY CRUISE

Just say the words French Polynesia and you instantly conjure up images of turquoise seas and bronzed dancers in grass skirts. And, once you visit, you'll discover that your imagination isn't too off the mark. Join us as we island hop our way around this beautiful archipelago, diving into the culture and traditions of each island, as well as the prismatic soapy seas. An overnight in Bora Bora offers a chance to not only bathe in the fabled natural lagoon, but to enjoy a postcard-worthy sunset that's worth writing home about.



ITINERARY

Day 1 Pre Cruise

Private Executive Transfers
International flights - Economy class
or Business Class upgrade
Airport transfers

The Small Cruise
Ship Collection

www.small-cruise-ships.com

01432 507 280 (within UK)

info@small-cruise-ships.com | small-cruise-ships.com



The Small Cruise Ship Collection

www.small-cruise-ships.com



small-cruise-ships.com

info@small-cruise-ships.com

Hotel

Day 2 Papeete (Tahiti)

Papeete is the center of the tropical paradise of French Polynesia, where islands fringed with gorgeous beaches and turquoise ocean await to soothe the soul. This spirited city is the capital of French Polynesia, and serves as a superb base for onward exploration of Tahiti - an island of breathtaking landscapes and oceanic vistas. A wonderful lagoon of crisp, clear water begs to be snorkelled, stunning black beaches and blowholes pay tribute to the island's volcanic heritage, and lush green mountains beckon you inland on adventures, as you explore extraordinary Tahiti. Visit to relax and settle into the intoxicating rhythm of life in this Polynesian paradise.

Day 3 Fakarava, Tuamotu Archipelago

Fakarava is oblong shaped and has an almost continuous string of reef and motu stretching for 40 km (25 mi) on its eastern edge. It's the second largest of the Tuamotu atolls, located 450 km (280 mi) northeast of Tahiti, and 120 km (75 mi) southeast of Rangiroa. It's renowned for the drift diving in its two passes--Garuae (also spelled Ngarue) in the north near the main town of Rotoava (and the airport) and Tamakohua Pass, 48 km (30 mi) across the lagoon in the south. The tiny village of Tetamanu, situated by the southern pass, was once the capital of the Tuamotus and houses the first church built in the archipelago in 1874. In 2006 the entire atoll was deemed an UNESCO biosphere reserve; to preserve the lagoon no overwater

bungalows have been built in it. Fakarava was "discovered" by Russian explorer Fabian Gottlieb Von Bellingshausen in 1820; some 20 years later missionaries arrived, in the guise of fanatical Catholic priest Honore Laval, and began building churches.

Day 4 Day at sea

Days at sea are the perfect opportunity to relax, unwind and catch up with what you've been meaning to do. So whether that is going to the gym, visiting the spa, whale watching, catching up on your reading or simply topping up your tan, these blue sea days are the perfect balance to busy days spent exploring shore side.

Day 5 Atuona - Hiva Oa, Marquesas Island

The largest of the southern islands, Hiva Oa, the master pillar or finial post of the 'Great House' \- which represents the Marquesan archipelago in the local mythology - has always been the rival of Nuku Hiva. The island is shaped like a seahorse and has a mountain range running southwest to northeast whose main peaks, Mt. Temetiu and Mt. Feani form a real wall around Atuona. Atuona, a peaceful little port at the head of the Taaoa Bay, also known as Traitors Bay, has emerged from obscurity due to having had the privilege of being the last resting place of Paul Gauguin and of the singer Jacques Brel. The tombs of these famous personalities are on the side of the Calvary cemetery looking out across the bay and are places of great pilgrimage. In the village, the Gauguin Museum displays items related to the painter's stay there at the beginning of the



The Small Cruise Ship Collection

www.small-cruise-ships.com



small-cruise-ships.com

info@small-cruise-ships.com

century and has copies of his works.

Day 6 Nuku Hiva, Marquesas Islands

Think of French Polynesia and you are automatically transported to the white sands of Tahiti, the blue seas of Bora Bora or, at the very least, the iconic statues of Easter Island. Now, imagine a place that is home to that majestic trinity, but has no crowds and is full of island authenticity that is rare in these global times. You have just imagined Nuku Hiva. The island is the second largest after Tahiti in the archipelago, but is yet to be discovered by tourism. As part of the Marquesas Islands, Nuku Hiva is technically French, but don't expect to find any blue and white striped shirts here! In fact, even though French is the "official" language of the island, a sing-song dialect of Tahitian mixed with Marquesan is more widely spoken. The younger generations also speak English. Undeniably, Nuku Hiva has been blessed by the Gods. With towering mountains, eight magnificent harbours, and one of the world's highest waterfalls, Nuku Hiva is rich with Mother Nature's jewels. The island could lay claim to a great many claims to fame, such as its deep, unpolluted waters, its lush forests bursting with vitality or its fascinating assortment of archaeological interests including tikis (sacred statues) and pae pae (stone platforms that formed the foundations of houses). Yet for those in the know, the island's primary claim to fame is that author Herman Melville deserted his ship in order to live among the natives of the island and his books *Typee* and *Omoo* were inspired by his experiences on Nuku Hiva.

Day 7 Day at sea

Days at sea are the perfect opportunity to relax, unwind and catch up with what you've been meaning to do. So whether that is going to the gym, visiting the spa, whale watching, catching up on your reading or simply topping up your tan, these blue sea days are the perfect balance to busy days spent exploring shore side.

Day 8 Rangiroa

Rangiroa is French Polynesia's largest atoll. More than 400 motu (islets) enclose the lagoon, which is so wide and long that one cannot see the southern row of motu from the two main islets in the north -hence the local name Rangiroa meaning wide or long sky, sometimes taken as "immense sky". There are several passes from the ocean into the lagoon and the two main villages of Avatoru and Tiputa are located next to the passes of the same names. Drift diving and snorkeling the incoming tides looking for sharks and manta rays at these passes is one of Rangiroa's main touristic draws. Government jobs, ecotourism and pearl farming are the main sources of income on the atoll. The lagoon's calm turquoise waters, rich marine underwater world and relaxed atmosphere attract visitors year-round to the many local guesthouses and a few hotels. Both Avatoru and Tiputa also feature schools for the other Tuamotu Islands which have no higher education possibilities. One of Rangiroa's most unusual attractions is the white and rose wine produced on the islet immediately west of Avatoru -the wine has won several awards.

Days 9 - 10 Bora Bora (Society Islands)



The Small Cruise Ship Collection

www.small-cruise-ships.com

01432 507 280 (within UK)

info@small-cruise-ships.com | small-cruise-ships.com



The Small Cruise Ship Collection

www.small-cruise-ships.com



small-cruise-ships.com

info@small-cruise-ships.com

If you have ever dreamt up your ideal island holiday, we suspect it goes something like this: Soapy blue seas? Check. Sparkling white beaches? Check. Thatched wooden huts, gently sloping palm trees and kaleidoscopic marine life? Check, check and check. And yet, even by ticking every box, first time viewing of Bora Bora still beggars belief. This tropical hideaway less than 12 m2 in the heart of the South Pacific has been toping travel wish lists for years. Long considered the realm of honeymooners - spectacularly romantic sunsets are a speciality - Bora Bora is not just for wandering with your love. If the prismatic shades of blue of the world's most beautiful lagoon do not fill you up, then perhaps underwater scooters and aqua Safaris will charge your batteries. If exploring Bora Bora's lush hinterland is more your glass of tequila sunrise, then trips around the island (often stopping off at the celebrity haunt Bloody Mary Restaurant & Bar) are a must. Bora Bora's peaceful ambience has not always been the case. The island was a US supply base, known as "Operation Bobcat" during WWII. During this time, Bora Bora was home to nine ships, 20,000 tons of equipment and nearly 7,000 men. Eight massive 7-inch naval cannons were installed around the island, all but one of which is still in place. Although little is known of the history of the island, it is known that Bora Bora was called Vava'u in ancient times. This supports belief that the island was colonised by Tongans prior to French annex in 1888.

Day 11 Raiatea

Known as the "Sacred Island," Raiatea is a fascinating haunt for

archaeologists and historians as it's one of the islands in the Pacific where Polynesian culture can trace its roots. Visitors will find many of the older Polynesian structures still in place and are fascinating places to explore. In the 16th century, Raiatea developed a powerful cult dedicated to Oro the God of War and built a large meeting ground, the Taputaputea Marae, which is still intact. Human sacrifice was practiced until around the middle of the 18th century and visitors should look for the sacrificial stone. Several tour operators run visits to the marae (ancient temples) along with some degree of informed commentary--although in fairness Polynesian storytelling can embellish things a little. The Faaroa River is the only navigable waterway in French Polynesia and it can be traveled by powerboat or outrigger canoe. Running through the Faaroa Gorge it passes some spectacular scenery with steep-walled jungle foliage holding dozens of bird species and wild hibiscus. Trekking up Mount Temehani, a well-known landmark that's said to be Oro's birthplace, is relatively demanding. Keep a lookout for the rare, five-petal tiare apetahi. Said to be impossible to grow anywhere else, this white, indigenous flower can only be found above 1,300 feet (396 meters). Look, but don't touch. It's against the law to pick them.

Day 12 Moorea Island

Moorea is a high mountainous island with two nearly symmetrical bays found on the north coast. The island's triangular shape has been likened to a heart or a bat. Eight mountain peaks reaching a height of up to 1,207 meters give Moorea a very rugged silhouette. The reef surrounding the island encloses a narrow lagoon -a RAMSAR Wetland- and has barely



The Small Cruise Ship Collection

www.small-cruise-ships.com

01432 507 280 (within UK)

info@small-cruise-ships.com | small-cruise-ships.com



The Small Cruise Ship Collection

www.small-cruise-ships.com



small-cruise-ships.com

info@small-cruise-ships.com

any motu (reef islets). Sharks and rays are some of the lagoon's attractions. The island is only one eighth the size of neighboring Tahiti and has a more relaxed life-style. A road leads around Moorea, passing small villages with their churches and the resorts and smaller hotels mainly found on the north coast. A detour into the interior will show large pineapple plantations, French Polynesia's only agricultural school, ancient marae (stone platforms) and splendid views of the island from Belvedere above Cook's Bay. Many of the 18,000 residents work in Tahiti, taking one of the ferries plying between Vaiare on the east coast and Papeete. This led to Papeete being one of France's busiest ports in passenger volume. Foreign visitors either come into Temae airport, tucked in-between the Green Pearl golf course and Temae's public beach, or by ship entering one of the two bays on the north coast. Both bays are connected to Captain Cook's visit in 1777: he stayed in Opunohu Bay, but to honor him Pao Pao Bay has been named Cook's Bay.

Day 13 Papeete (Tahiti)

Papeete is the center of the tropical paradise of French Polynesia, where islands fringed with gorgeous beaches and turquoise ocean await to soothe the soul. This spirited city is the capital of French Polynesia, and serves as a superb base for onward exploration of Tahiti - an island of breathtaking landscapes and oceanic vistas. A wonderful lagoon of crisp, clear water begs to be snorkelled, stunning black beaches and blowholes pay tribute to the island's volcanic heritage, and lush green mountains beckon you inland on adventures, as you explore extraordinary Tahiti. Visit to relax and settle into the intoxicating rhythm of life in this Polynesian paradise.

Day 14 Post Cruise

Hotel

Airport transfers

International flights - Economy class

or Business Class upgrade

Private Executive Transfers

Please note:

Itineraries are subject to change.



The Small Cruise Ship Collection

www.small-cruise-ships.com

01432 507 280 (within UK)

info@small-cruise-ships.com | small-cruise-ships.com



The Small Cruise Ship Collection

www.small-cruise-ships.com



small-cruise-ships.com

info@small-cruise-ships.com

YOUR SHIP: SILVER SHADOW

YOUR SHIP:	Silver Shadow
VESSEL TYPE:	Luxury Cruise
LENGTH:	186 meters
PASSENGER CAPACITY:	392
BUILT/REFURBISHED:	2000/2019

Award-winning Silver Shadow is a firm favourite in the Silversea fleet. With one of the highest space-to-guest ratios at sea she offers authentic experiences, simple pleasures and shared moments. Silversea's Shadow Class luxury cruise ships Silver Shadow and Silver Whisper offer you freedom and space to design your day. Silver Shadow retains Silversea's essence - spacious suites and superior service - paired with a lively cosmopolitan atmosphere and enhanced amenities. Energise body and mind in the upgraded spa and fitness centre. Savour fine wines and French gastronomy in La Dame and enjoy authentic Italian cuisine in La Terrazza, endless ocean views from The Grill and internationally-inspired The Restaurant. From delectable dining to relaxation in ultra-luxury, cruising has never felt so good. Dining The Restaurant - Enjoy Continental and regional specialities, as well as sweeping ocean views in our main dining room. La Dame features a bespoke menu by our top chefs, and is the highest expression of excellence of French dining. La Terrazza - Authentic Italian recipes and the freshest, sustainable ingredients come together in this restaurant at sea. The Grill - Soft breezes and ocean views beckon at the Grill, especially as the sun goes down when cruise guests gather for

cocktails at the outdoor bar and talk about the day's events. Public Areas Panorama Lounge - Relax and unwind in the Panorama Lounge, a sophisticated yet amicable space offering beautiful ocean views as you enjoy your cruise. Observation Library - Set on the highest level at the very top of the ship, this is a quiet space for reading and reflection while being dazzled by the undulating seascapes that are constituent to life on board. Boutique - There is a wealth of luxury shopping experiences aboard all Silversea ships, featuring the most distinctive and appealing brands from across the globe. Pool Deck - Chaise lounges arranged in the sun or shade. Bubbling whirlpools. The pool water refreshing in warmer climates, heated for cooler weather. Connoisseur's Corner - If you appreciate good cognac or premium cigars, be sure to visit the Connoisseur's Corner to see the ship's exceptional selection. Atrium - The Atrium aboard provides a unique space at the heart of deck 5. Filled with natural light, beautiful and spacious bar and offers an all-day drinks and snack venue. The Show Lounge - Applaud a broad spectrum of entertainment -- from full-scale production shows and classical soloists, to cultural entertainment and feature films. Card Room/conference Room - Whether it is for a card tournament or conference, Silversea will provide a dedicated space for the perfect guest experience. Zagara Beauty Spa - Come and indulge in a luxurious spa treatment. Facials, body wraps, massages: the spa is the perfect place to unwind. Casino - Try your luck in Silversea's on-board Casino, featuring a champagne reception and choice of games. Reception - Be sure to visit the Reception area, where our experts can provide invaluable information to help you get the



The Small Cruise Ship Collection

www.small-cruise-ships.com

01432 507 280 (within UK)

info@small-cruise-ships.com | small-cruise-ships.com



The Small Cruise Ship Collection

www.small-cruise-ships.com



small-cruise-ships.com

info@small-cruise-ships.com

most out of your cruise. Fitness Centre - The Fitness Centre offers world-class equipment, classes, and personalized services. Zagara Beauty Salon - Maintain your fresh look throughout your luxury cruise at the Zagara Beauty Salon. Services are available for men

and women.



The Small Cruise
Ship Collection

www.small-cruise-ships.com

01432 507 280 (within UK)

info@small-cruise-ships.com | small-cruise-ships.com



The Small Cruise Ship Collection

www.small-cruise-ships.com

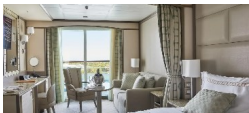


small-cruise-ships.com

info@small-cruise-ships.com

INSIDE YOUR SHIP

Classic Veranda Suite



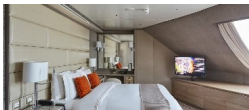
Deluxe Veranda Suite

Grand Suite



Medallion Suite

Owner's Suite



Royal Suite

Silver Suite

Superior Veranda Suite



The Small Cruise Ship Collection

www.small-cruise-ships.com



small-cruise-ships.com

info@small-cruise-ships.com

PRICING

25-Jan-2025 to 07-Feb-2025

Royal Suite	£23205 GBP pp
Grand Suite	£24789 GBP pp
Vista Suite	£7655 GBP pp
Classic Veranda Suite	£9285 GBP pp
Superior Veranda Suite	£9745 GBP pp
Deluxe Veranda Suite	£10305 GBP pp
Medallion Suite	£15865 GBP pp
Silver Suite	£17649 GBP pp
Owner's Suite	£30039 GBP pp

05-Feb-2025 to 20-Feb-2025

Vista Suite	£10149 GBP pp
Classic Veranda Suite	£11069 GBP pp
Superior Veranda Suite	£11679 GBP pp
Deluxe Veranda Suite	£12189 GBP pp
Medallion Suite	£18055 GBP pp
Silver Suite	£22185 GBP pp
Royal Suite	£26979 GBP pp
Grand Suite	£28969 GBP pp
Owner's Suite	£35395 GBP pp

18-Feb-2025 to 03-Mar-2025

Vista Suite	£8059 GBP pp
Classic Veranda Suite	£9435 GBP pp
Superior Veranda Suite	£9895 GBP pp
Deluxe Veranda Suite	£10455 GBP pp
Medallion Suite	£16015 GBP pp
Silver Suite	£17799 GBP pp
Royal Suite	£23359 GBP pp
Grand Suite	£24939 GBP pp
Owner's Suite	£30195 GBP pp

01-Mar-2025 to 14-Mar-2025

Silver Suite	£16779 GBP pp
Owner's Suite	£29225 GBP pp
Vista Suite	£7655 GBP pp
Classic Veranda Suite	£8415 GBP pp
Superior Veranda Suite	£8925 GBP pp
Deluxe Veranda Suite	£9385 GBP pp
Medallion Suite	£15099 GBP pp
Royal Suite	£22389 GBP pp
Grand Suite	£23975 GBP pp



The Small Cruise Ship Collection

www.small-cruise-ships.com

01432 507 280 (within UK)

info@small-cruise-ships.com | small-cruise-ships.com