



## The Small Cruise Ship Collection

[www.small-cruise-ships.com](http://www.small-cruise-ships.com)

[small-cruise-ships.com](http://small-cruise-ships.com)

[info@small-cruise-ships.com](mailto:info@small-cruise-ships.com)

## OCEAN VOYAGE: FROM CAIRNS TO DUNEDIN IN LUXURY

From sea to sea, or from continent to continent, PONANT welcomes you aboard its ships for a Sea Journey. A few times a year we invite sea lovers, dreamers, and keen observers of endless horizons to join our non-stop journeys, to enjoy the comfort of our ships for an extended period and share the daily lives of our crew.



### ITINERARY

Day 1 CAIRNS

Washed by the Coral Sea, the harbour town of Cairns is located on Australia's north-east coast. The seafront esplanade is a popular place for locals and visitors to walk, swim and picnic under the shade of swaying palm trees. The hills surrounding Cairns form the gateway to the Queensland Rainforests, proclaimed a UNESCO World Heritage site for their fauna and flora from the Gondwana era.

Days 2 - 9 AT SEA

The Small Cruise Ship Collection

[www.small-cruise-ships.com](http://www.small-cruise-ships.com)

01432 507 280 (within UK)

[info@small-cruise-ships.com](mailto:info@small-cruise-ships.com) | [small-cruise-ships.com](http://small-cruise-ships.com)



## The Small Cruise Ship Collection

[www.small-cruise-ships.com](http://www.small-cruise-ships.com)

[small-cruise-ships.com](http://small-cruise-ships.com)

[info@small-cruise-ships.com](mailto:info@small-cruise-ships.com)

During your journey at sea, make the most of the many services and activities on board. Treat yourself to a moment of relaxation in the spa or stay in shape in the fitness centre. Depending on the season, let yourself be tempted by the swimming pool or a spot of sunbathing. This journey without a port of call will also be an opportunity to enjoy the conferences or shows proposed on board, depending on the activities offered, or to do some shopping in the boutique or to meet the PONANT photographers in their dedicated space. As for lovers of the open sea, they will be able to visit the ship's upper deck to admire the spectacle of the waves and perhaps be lucky enough to observe marine species. A truly enchanted interlude, combining comfort, rest and entertainment.

### Day 10 DUNEDIN

Dunedin is New Zealand's oldest city and is often referred to as the Edinburgh of New Zealand. This city of the south, wears its Scottish heritage with pride. The city contains some of the best preserved Victorian and Edwardian architecture in the Southern Hemisphere. The Silverpeaks hinterland to the North West provides a picturesque backdrop and The Otago Peninsula, which lies within the city boundaries, has internationally renowned wildlife reserves, including the only mainland breeding colony of Northern Royal Albatross.

Please note:

Itineraries are subject to change.

 The Small Cruise Ship Collection  
[www.small-cruise-ships.com](http://www.small-cruise-ships.com)

**01432 507 280** (within UK)

[info@small-cruise-ships.com](mailto:info@small-cruise-ships.com) | [small-cruise-ships.com](http://small-cruise-ships.com)

# The Small Cruise Ship Collection

[www.small-cruise-ships.com](http://www.small-cruise-ships.com)

[small-cruise-ships.com](http://small-cruise-ships.com)

[info@small-cruise-ships.com](mailto:info@small-cruise-ships.com)

## YOUR SHIP: LE SOLEAL

**YOUR SHIP:**

**Le Soleal**

**VESSEL TYPE:**

**LENGTH:**

**PASSENGER CAPACITY:**

**BUILT/REFURBISHED:**

Luxury Small Ship A sleek silhouette, a welcoming intimate atmosphere, and the same philosophy that has made her sister ships, L'Austral, Lyrial and Le Boreal, such a success. This magnificent yacht of only 132 staterooms and suites, all with balconies, has contemporary decor inspired by the luxury yachting world, with fluid lines and a modern colour scheme combining natural wood with shades of grey and white. White Corian counters in the lobby contrast with the warmth of leather to recall a boat's hull, while the central sculpture of enamelled pieces takes its inspiration from the sea. In the lounge bar, the carpet picks up a tennis stripe theme symbolising a certain idea of cruising, one synonymous with French elegance and a chic seaside spirit. Wheelchairs 3 specially adapted wheelchair cabins (Deck 3 = Superior cabin no. 307, no balcony, Deck 4 = Prestige Cabin no. 407 - with balcony and Deck 5 = Prestige Cabin no 509, with balcony) and lifts to all decks/areas. Read about our recent Ponant cruise to Antarctica Please click the following links to read more about Ponant and the other Ponant cruise ships.





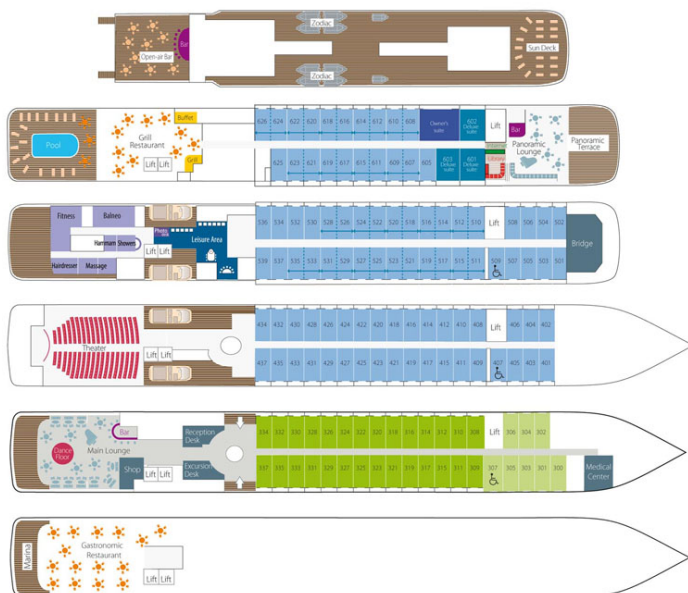
# The Small Cruise Ship Collection

www.small-cruise-ships.com

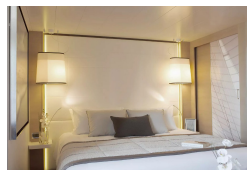
small-cruise-ships.com

info@small-cruise-ships.com

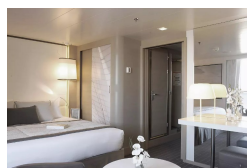
## INSIDE YOUR SHIP



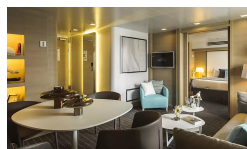
DeLuxe Stateroom



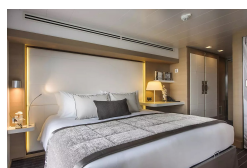
Deluxe Suite



Owner's Suite



Prestige Stateroom - Deck 4



Prestige Stateroom - Deck 5

Prestige Stateroom - Deck 6

Prestige Suite - Deck 5

Prestige Suite - Deck 6



# The Small Cruise Ship Collection

[www.small-cruise-ships.com](http://www.small-cruise-ships.com)

[small-cruise-ships.com](http://small-cruise-ships.com)

[info@small-cruise-ships.com](mailto:info@small-cruise-ships.com)

## PRICING

20-Dec-2025 to 29-Dec-2025

Prestige Suite - Deck 6	£3493 GBP pp
Prestige Stateroom - Deck 4	£2050 GBP pp
Owner's Suite	£3687 GBP pp
DeLuxe Stateroom	£1927 GBP pp
Prestige Suite - Deck 5	£3376 GBP pp
Superior Stateroom	£1754 GBP pp
Prestige Stateroom - Deck 5	£2121 GBP pp
Prestige Stateroom - Deck 6	£2218 GBP pp
Deluxe Suite	£3111 GBP pp

**ADDITIONAL CHARGES:** Port Taxes 670 AUD pp