

# The Small Cruise Ship Collection

www.small-cruise-ships.com

small-cruise-ships.com

info@small-cruise-ships.com

## FROM NORWEGIAN FJORDS TO IBERIAN CHARM EUROPE'S ATLANTIC HIGHLIGHTS

Fjords and wild coasts From beautiful Bergen, your European expedition cruise will sail to Stavanger and stunning Lysefjord. Across the North Sea, we'll explore historical coastal towns including Hamburg, Harlingen and Oostende. Enjoy rugged scenery and pretty towns along the western seaboard from Normandy to A Coruña. Wildlife and culture Scout for whales, dolphins and porpoises in the Bay of Biscay. Discover UNESCO World Heritage Sites from the wonders of Galicia, Santiago de Compostela and Hamburg's Speicherstadt, to Lisbon's Belém Tower. You're sure to savour delicious cuisine, wine and cultural heritage in Porto and Lisbon.



### ITINERARY

#### DAY 1 Your Expedition Begins

Explore UNESCO-listed Bryggen and mountain peaks Your journey starts in what was once Norway's capital, Bergen. As you stroll through the cobble streets and alleyways, why not visit the historic UNESCO-listed Bryggen district, with its colourful wooden wharfs, or the famous fish market, full of sights, sounds – and scents – to savour. Ride the Fløibanen funicular, which has been transporting visitors to the summit of Mount Fløyen for over a century, and offers amazing views over this picturesque city and its colourful homes. Pre-Programme If

The Small Cruise Ship Collection

www.small-cruise-ships.com

01432 507 280 (within UK)

info@small-cruise-ships.com | small-cruise-ships.com



## The Small Cruise Ship Collection

[www.small-cruise-ships.com](http://www.small-cruise-ships.com)

[small-cruise-ships.com](http://small-cruise-ships.com)

[info@small-cruise-ships.com](mailto:info@small-cruise-ships.com)

you have extra time in Bergen, why not book our Pre-Programme and enjoy the incredible view over Bergen during a refreshing hike up Mount Fløyen.

### DAY 2 Explore lively Stavanger and striking Lysefjord

Sail into striking Lysefjord with incredible views Stavanger has an international ambience and a lively cultural scene. Discover the architectural relics of Old Stavanger, including a magnificent 12th century cathedral. You can also visit the Norwegian Petroleum Museum, pop into a local boutique or simply enjoy a beer on the waterfront. Leaving Stavanger, we sail into Lysefjord to experience some of the most striking vertical cliffs of all the Norwegian fjords. A five-hour guided hike will reward you with breathtaking views of Lysefjord from the 1,980 ft high Preikestolen viewpoint, famously known as 'Pulpit Rock'.

### DAY 3 Crossing the North Sea

Time to relax as we head to Hamburg Exploration doesn't end when you're onboard; there's plenty to see and do as we sail towards Germany. Why not work up a sweat in the gym, or relax in the sauna or hot tub. Your Expedition Team will begin a series of lectures, offering unique insights into the history, heritage, and natural sciences of the places we'll be visiting. On deck, our biologists will help you scan the seas for wildlife. You can also pick up some useful tips from our onboard photographer. Or simply enjoy the scenery from the comfort of the Explorer Lounge & Bar.

### DAY 4 Historical Hamburg

Explore Hamburg's architectural and cultural delights There's so much to see and do on your own in Hamburg. Visit the old floating dock of Landungsbrücken, see the old ships and yards, waterfront buildings, and the Old Elbe Tunnel. You'll find many

attractions in the Altstadt district, including the St Nikolai Memorial, St Catherine's Church, City Hall and the historic street of Deichstraße. Art lovers will enjoy Kunsthalle, Germany's foremost art museum. Why not visit the world's largest warehouse complex at Kontorhausviertel and Speicherstadt, which together with Chilehaus are UNESCO World Heritage Sites.

### DAY 5 Harlingen's rich heritage

Experience the Frisian port city of Harlingen You can walk or bike around Harlingen, a city of canals and pretty harbours, and home to the last traditional pottery factory in the Netherlands. Harlingen lies on the shores of the Wadden Sea, a UNESCO World Heritage Site. You'll find traditional sailing ships and historic warehouses around the old harbours of Noorderhaven and Zuiderhaven. Don't miss the Harlingen Aardewerkmuseum to admire displays of distinctive Frisian pottery.

### DAY 6 Explore Oostende and Bruges

Rich medieval architecture among winding streets First a fishing village, then a medieval city, and later a royal seaside resort, the strategic port of Oostende is steeped in European history. Yet despite the ravages of war and time, many of its medieval features have survived to the present day. It's also a great base from which to visit Bruges. Lose yourself in this beautifully preserved medieval town, as you explore winding streets, picturesque canals and grand 14th century buildings.

### DAY 7 Normandy past and present

Discover historic beaches, Caen and WWII memorials Normandy has a fascinating history, from the Viking invasion to the D-Day landings in 1944. In Ouistreham, you'll learn about Operation Overlord at the Musée No 4 Commando. Check out the German fortifications at Le Grand Bunker and visit the war cemetery at

The Small Cruise Ship Collection  
[www.small-cruise-ships.com](http://www.small-cruise-ships.com)

01432 507 280 (within UK)

[info@small-cruise-ships.com](mailto:info@small-cruise-ships.com) | [small-cruise-ships.com](http://small-cruise-ships.com)



# The Small Cruise Ship Collection

[www.small-cruise-ships.com](http://www.small-cruise-ships.com)

[small-cruise-ships.com](http://small-cruise-ships.com)

[info@small-cruise-ships.com](mailto:info@small-cruise-ships.com)

Hermanville-sur-Mer. Or why not stroll along the beautiful Beach of Riva Bella and stop at the 12th century St Samson Church and the 1905 lighthouse. Afterwards, you'll explore the pretty town of Caen. The 11th century Romanesque church of Saint-Étienne, the Mémorial de Caen that commemorates WWII, and the Musée des Beaux-Arts de Caen are highlights not to be missed.

#### DAY 8 The citadel of Saint-Malo

A beautiful Breton town steeped in history Viewed from the sea, Saint-Malo is an impressive sight, fringed by fortified bastions and gently sloping beaches. A circular walk along the ramparts offers the best views of the town and surrounding islands. Follow the historical trail within the old city walls through a maze of cobbled streets and visit Demeure De Corsaire to learn about the feared corsairs and the town's pirate heritage. You can even visit the Abbey of Mont-Saint-Michel or walk to Île de Grand Bé at low tide. The island has remains of an ancient fort and where the renowned local writer Chateaubriand is buried.

#### DAY 9 Fascinating Finistère

Inspiring coastal scenery and maritime history We'll use our small expedition boats to go ashore at the picturesque seaside town of Douarnenez, where you'll find the colourful quaysides, sandy beaches, and steep cliffs that inspired famous painters like Renoir and Boudin. As well as fishermen's huts and seamen's chapels, Douarnenez hosts a wonderful maritime museum with boats from around the world. If conditions don't allow a visit to Douarnenez, we'll head to nearby Brest, a fascinating and historic city with many medieval fortifications. Here, you can visit the National Maritime Museum inside the military fortress of Château de Brest. It's a modern city too, with lively quays and docks that are perfect for a scenic stroll.

#### DAY 10 Sailing the Bay of Biscay

Unwind and enjoy the natural world around you Today is a perfect day to relax on deck with your binoculars and watch for whales, dolphins and porpoises. This is one of the few places in the world where beaked whales can be seen – if you're lucky – as they're drawn to the nutrient rich waters of the bay. You can also learn about the marine biology of the waters along our cruise, and join hands-on demonstrations and in-depth lectures about the history, geography, and environment of the destinations to come. And don't forget the leisure facilities on board – why not try out the panoramic sauna?

#### DAY 11 Galician highlights

See Galicia's heritage in Ferrol, Lugo and A Coruña Our first stop on the rugged Galician coast of Spain is Ferrol. Once a small fishing hamlet, for the past three centuries it's been Spain's main naval base. There are more forts, citadels and barracks here than any other harbour in the country. A walking tour here will reveal its many historic highlights. You can also visit the old town of Lugo, famed for its Roman walls. You'll then sail to neighbouring A Coruña and dock for the night. Here you'll find the Tower of Hercules, the world's oldest functioning lighthouse and a UNESCO World Heritage Site.

#### DAY 12 Historic A Coruña

Today you'll have another opportunity to admire the Tower of Hércules before visiting the town of A Coruña for a true taste of Galician culture. You'll want to sample the unique Galician cuisine here. Ask for a selection of tapas and try a glass of local cider. In fact, it's traditionally poured into a glass from high above it to introduce lots of air bubbles. A Coruña is one of the starting points for the Camino de Santiago pilgrimage route. It connects to the Camino Inglés – the 'English Way'. From here,

The Small Cruise Ship Collection  
[www.small-cruise-ships.com](http://www.small-cruise-ships.com)

01432 507 280 (within UK)

[info@small-cruise-ships.com](mailto:info@small-cruise-ships.com) | [small-cruise-ships.com](http://small-cruise-ships.com)



## The Small Cruise Ship Collection

[www.small-cruise-ships.com](http://www.small-cruise-ships.com)

[small-cruise-ships.com](http://small-cruise-ships.com)

[info@small-cruise-ships.com](mailto:info@small-cruise-ships.com)

why not join a walk to its eventual destination, Santiago de Compostela.

### DAY 13 The ancient port of Vigo

The beautiful city of Vigo in the heart of Galicia Our cruise continues to Vigo, once the gateway to the Americas. Protected by the beautiful Islas Cíes, Vigo has one of the best natural harbours in Galicia and has become its main trading and fishing port. Perfectly located for exploring the city on foot, you can visit the bustling Rúa do Príncipe with its eclectic mix of Neoclassical and Art Nouveau architectural styles. Or seek out the impressive 16th century Castro Castle and park. On your way to the old town and Neoclassical cathedral, don't miss the Rúa da Pescadería and sample some of the delicious seafood Galicia is famous for.

### DAY 14 Charming Porto

Explore the UNESCO-listed historic centre of Porto Arriving in Portugal, we dock at Leixões. From here, you can see the lighthouse of Leça, the Boa Nova Chapel, and the beautiful beach of Praia Azul. You can take a shuttle bus to Porto – famed for its port wine and UNESCO-listed historic centre. An undulating city made for walking, you'll fall in love with the pastel houses, colourful tiled façades, street art, ornate churches and panoramic views across the Douro River. Here, you can stroll along the bustling promenade by the Ribeira docks, cross the Dom Luís I Bridge, snack on delicious petiscos, and enjoy wine tastings at the port cellars of Vila Nova de Gaia.

### DAY 15 Legendary Lisbon

End your cruise in one of southern Europe's most enchanting cities. Your expedition draws to a close as we arrive at the Portuguese capital of Lisbon. A tour of Lisbon's classical

districts is essential – almost everything of historic interest is here. Start your exploration at the Praça do Comercio in Baixa and walk towards the narrow streets of Bairro Alto. From there, you'll arrive at Alfama and the old Islamic quarter, the remains of the Roman amphitheatre and the Moorish fortress. If you've time, visit the UNESCO World Heritage Sites of Torre de Belém and Mosteiro dos Jerónimos, where you'll also find the delicious pastéis de Belém. Post-Programme We feel sure you'll have had a great cruise discovering the fascinating history of the Atlantic coastline of Europe, but you don't need to go home just yet. If you would like to explore Lisbon and its surroundings before you return home, we recommend joining our optional Post-Programme. Not only will you see Lisbon's fascinating historic districts, you'll also explore the royal resorts outside the city, including the UNESCO town of Sintra, Monserrate Palace and the beaches of Cascais city during a guided excursion. Afterwards, you'll return to Lisbon for an overnight stay.

#### Please Note:

Itineraries are subject to change.

The Small Cruise Ship Collection

[www.small-cruise-ships.com](http://www.small-cruise-ships.com)

01432 507 280 (within UK)

[info@small-cruise-ships.com](mailto:info@small-cruise-ships.com) | [small-cruise-ships.com](http://small-cruise-ships.com)

# The Small Cruise Ship Collection

www.small-cruise-ships.com

small-cruise-ships.com

info@small-cruise-ships.com

## YOUR SHIP: SPITSBERGEN

### YOUR SHIP:

**Spitsbergen**

**Expedition Passenger Capacity:**

**335 Built / refurbished: 2009 /**

### VESSEL TYPE:

**2016**

### LENGTH:

### PASSENGER CAPACITY:

### BUILT/REFURBISHED:

Completely rebuilt in 2016, the 100 metre MS Spitsbergen features high technical standards as well as comfortable, modern public areas and cabins. The vessel's fresh Scandinavian design reflects a colour palette derived from the sea. She is modern and environmentally progressive, and further improvements that will reduce emissions and fuel consumption even more are in process. The new ship's maneuverability and optimal size make her quite suitable for exploring polar waters of both the Arctic and Antarctica. Spitsbergen has a wide range of facilities including a sauna, fitness centre and hot tub, several bars and restaurants and a panoramic lounge. MS Spitsbergen has an on-board Expedition Team and serves as a university at sea. Interesting lectures inside the ship as well as out on the sun deck make this an exciting and educational journey. Topics depend on the season and the waters we sail in. The Expedition Team host a lecture programme and evening gatherings daily. Out on deck you can participate in live points of interest to learn more about the nature, culture and other phenomena we encounter along the coast. In addition, the Expedition Team will

introduce you to the uniquely Norwegian notion of 'friluftsliv' (outdoor life), and encourage you take part in 'friluftsliv' hikes and activities during the journey. Ship Facilities Compass Service Centre Brygga bistro Shop Torget main dining Wi-Fi Lift Guest launderette Panoramic deck 8 Outside bar for events,



decks 7 & 8

# The Small Cruise Ship Collection

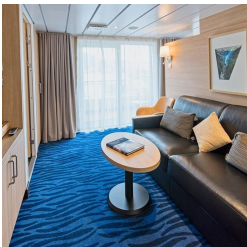
[www.small-cruise-ships.com](http://www.small-cruise-ships.com)

[small-cruise-ships.com](http://small-cruise-ships.com)

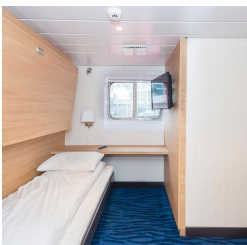
[info@small-cruise-ships.com](mailto:info@small-cruise-ships.com)

## INSIDE YOUR SHIP

Arctic Superior. From Expedition Suite. From



Polar Outside. From





The Small Cruise  
Ship Collection

[www.small-cruise-ships.com](http://www.small-cruise-ships.com)

[small-cruise-ships.com](http://small-cruise-ships.com)

[info@small-cruise-ships.com](mailto:info@small-cruise-ships.com)

## PRICING

25-Sep-2024 to 09-Oct-2024

Arctic Superior. From	£4305 GBP pp
Polar Outside. From	£3874 GBP pp
Expedition Suite. From	£5630 GBP pp