

The Small Cruise Ship Collection

www.small-cruise-ships.com



small-cruise-ships.com

info@small-cruise-ships.com

NORTHWEST PASSAGE TO NEWFOUNDLAND - GLACIERS, MOUNTAINS, AND WILDLIFE

This exciting new 16-day itinerary takes you on a 2,500-nautical mile journey along the legendary Northwest Passage in the Canadian High Arctic, then down the rarely visited east coast of Baffin Island to Newfoundland and Labrador, where we'll visit magnificent Torngat Mountains National Park and the windswept Viking ruins at L'Anse Aux Meadows UNESCO world heritage site. This voyage of discovery also features a visit to the French islands of Saint Pierre and Miquelon, located in the Gulf of the St. Lawrence. Setting sail from the northern gateway of Qausuittuq (Resolute) in Nunavut, we start our adventure in the middle of the historic Northwest Passage. Your home away from home during this ground-breaking exploration is our technologically-advanced Ultramarine, which is equipped with two twin-engine helicopters, and a fleet of 20 quick-deploy Zodiacs that enable you to get off the ship quickly and efficiently. Throughout this voyage, we'll set our sights on remote wilderness areas along the east coast of Baffin Island, Labrador and Newfoundland that are only accessible by water. You will also get to explore Beechey Island National Historic Site, Icy Arm Fjord, the small Baffin Island community of Qikiqtarjuaq, Cape Mercy on southern Baffin Island at the mouth of Cumberland Sound, Torngat Mountains National Park, L'Anse aux Meadows UNESCO world heritage site, the French archipelago of Saint Pierre and Miquelon and, finally, the historic city of St. John's, Newfoundland. The geographical range of this expedition is massive. You'll start at 74.69° N, cross the Arctic Circle at 66.66° N, and ultimately finish your journey in St. John's, at 47.55° N. Clearly, this is the ideal trip for travelers who long to see as much of the remote Canadian wilderness as possible. In

addition to exploring the Territory of Nunavut, as well as Newfoundland and Labrador, we're especially excited to visit Nunatsiavut, the self-governing region that's home to the Labrador Inuit who are known as





The Small Cruise Ship Collection

www.small-cruise-ships.com

small-cruise-ships.com

info@small-cruise-ships.com

Nunatsiavummiut.

ITINERARY

Day 1 Arrive in Calgary, Alberta

Arrive at Calgary International Airport and make your way to your included hotel. The rest of the day is yours to explore this fascinating Western Canadian city-home of the world-famous Calgary Stampede-which mixes cosmopolitan flair with cowboy charm.

Day 2 Fly to Qausuittuq (Resolute) and embark

This morning we'll catch our flight to the northern gateway of Qausuittuq (Resolute) in Nunavut, where we start our adventure in the middle of the legendary Northwest Passage. You will be transferred to your ship by Zodiac or helicopter depending on ship location and weather conditions.

Qausuittuq (Resolute), located on the southern shores of Cornwallis Island, means "the place with no dawn" in Inuktitut. This name, unsurprisingly, refers to the 24-hour winter nights that occur in this remote northern region.

Timing of this expedition, however, is aptly positioned to take advantage of the late summer and early fall ice conditions, which make Quasuittuq accessible, while at the same time welcoming the setting sun high above the Arctic Circle. Upon

departing Qausuittuq, your ship will navigate through Tallurutiup-Imanga (Lancaster Sound). This 320-km waterway and the surrounding lands are extremely rich in wildlife and history, both indigenous and European. The Inuit and their predecessors have made their home in this domain for thousands of years.

Day 3 Tallurutiup-Imanga (Lancaster Sound) and the myth of the Franklin

Today we'll head to the western end of Devon Island, on the north side of Tallurutiup-Imanga, and go ashore at wind-swept Beechey Island, which is home to Beechey Island Sites National Historic Sites. These sites, maintained by Parks Canada, tell the story-or at least the part that's not still shrouded in mystery-of Sir John Franklin's much-chronicled 1845-46 expedition to explore the Northwest Passage.

The island is small, only 2.5 kilometres at its widest point, but its shores are steep, and rise to a flat plateau 244 metres high. That's where Franklin and his crew of 128 men spent the winter after embarking from England aboard their two ships, HMS Erebus and HMS Terror. The ill-fated 1845-46 expedition-- to navigate and chart the Northwest Passage-- ended in tragedy for all 129 men and their two vessels.

What happened to Franklin and his men is the stuff of legend --but also the focus for several search expeditions over the years, which discovered bodies, personal belongings of crew members, and handwritten notes that suggested starvation, deaths from hypothermia, scurvy, and lead poisoning from the

The Small Cruise Ship Collection

www.small-cruise-ships.com

01432 507 280 (within UK)

info@small-cruise-ships.com | small-cruise-ships.com



The Small Cruise Ship Collection

www.small-cruise-ships.com

small-cruise-ships.com

info@small-cruise-ships.com

tinned food supplies. Accounts by Inuit suggest the crew split up into small groups and subsequently perished. What is known for certain is that no one survived.

The graves of three officers from HMS Erebus- John Hartnell, William Braine, and John Torrington-were discovered in 1851. You will have an opportunity to visit their graves, and honor the memory of the entire Franklin crew who braved massive challenges to explore the Northwest Passage.

Franklin's story is an integral part of the history of Arctic exploration.

The wrecks of Erebus and Terror were discovered in 2014 and 2016, respectively.

[Day 4 At Sea: Exploring the largest marine-protected area in Canada](#)

We continue our exploration of Tallurutiup-Imanga, which, in 2017, became the Tallurutiup Imanga National Marine Conservation Area (Lancaster Sound National Marine Conservation Area). At 109,000 square kilometres, it's the largest marine-protected area in Canada. Heed the advice we always give to our guests whenever a voyage takes them above the Arctic Circle: keep your binoculars ready-especially when out on deck-to view the diverse wildlife that inhabit these waters. Upon leaving Tallurutiup-Imanga, Ultramarine heads into the Davis Strait, which separates Baffin Bay and the Labrador Sea and forms part of the historic Northwest Passage. Clear skies later in the evening herald the promise of a spectacular display of the Northern Lights. Prepare to be awestruck.

[Day 5 Baffin Island Fjords and Heli-flightseeking](#)

This is an especially exciting day as you become one of the very few travelers to explore the stunningly majestic Icy Arm Fjord, which cuts almost 80 kilometres deep into northern Baffin Island.

Accessible only by water in summer months when the sea ice recedes, this rarely-visited fjord is known for its unrivalled landscape of towering cliffs and stunning glaciers, and is valued as much for its sheer remoteness as it is for its singularly pristine environment. Icy Arm Fjord is the epitome of unspoiled Arctic wilderness. We may observe polar bears, Arctic foxes, seals, walruses, as well as guillemots, kittiwakes and other Arctic-dwelling birds.

Excitement grows on Day 5 as Ultramarine's two twin-engine helicopters are made ready for Heli Flightseeing excursions. Prepare to view the remote Arctic terrain from the seat of a helicopter-camera at the ready. It's also an excellent day for Zodiac cruises, which offer guests a sea-level intimacy with the the surrounding lands and waters.

[Day 6 At Sea: Get acquainted with the on-board features of Ultramarine!](#)

Cruising along the east coast of Baffin Island, particularly from the middle of the island to the southern tip, brings into sharp perspective the sheer vastness of the largest island in Canada, and the fifth-largest in the world. Day 6 is an excellent

The Small Cruise Ship Collection
www.small-cruise-ships.com

01432 507 280 (within UK)

info@small-cruise-ships.com | small-cruise-ships.com



The Small Cruise Ship Collection

www.small-cruise-ships.com

small-cruise-ships.com

info@small-cruise-ships.com

opportunity to familiarize yourself with the features of your ship, including the fitness centre, spa and library. Any surplus time between the expert-led polar presentations-and delicious meals, of course- is perfect for editing your digital photos. We know you've taken hundreds by now!

Day 7 Life in Qikiqtarjuaq

Qikiqtarjuaq, fondly called Qik, is a small hamlet-populated mostly by Inuit -- north of the Arctic Circle on Broughton Island, off the east coast of Baffin Island. Known as the iceberg capital of Nunavut, Qikiqtarjuaq is located at the northern entrance to the mountainous Auyuittuq National Park, which is home to narwhals, bowhead and orca whales, polar bears, seals and migratory birds. Community visits, arranged in collaboration with our local partners, enable guests to learn about local culture, and purchase art and traditional handicrafts, such as parkas, boots and local art when available.

Day 8 Cape Mercy: Fascinating history in the remote wilderness

History buffs will enjoy a visit to Cape Mercy, an isolated cove at the southern tip of Cumberland Sound in Nunavut.

Cape Mercy was named by British explorer John Davis, who sailed through this part of the Arctic in 1585. Fast-forward several centuries to the 1950s when Cape Mercy was chosen as the site of a Distant Early Warning Line (DEW) installation, which was part of a system of radar stations set up during the Cold

War to detect nuclear attacks.

Today, Cape Mercy, accessible by water, offers modern-day travelers the chance to experience the splendid isolation of the Arctic-with no sign of civilization in sight. You can join a guided hike to a glacier-carved freshwater lake on Cape Mercy. Make sure you bring your camera for this off-ship excursion.

Day 9 At Sea: Enjoying the on-ship amenities and learning opportunities

There's no shortage of activities on board Ultramarine for your at-sea days. You can relax and rejuvenate in the sauna with floor-to-ceiling windows, book a soothing treatment in Tundra Spa, visit the fitness centre, practise yoga, or deepen your Arctic knowledge by attending one of our expert-led presentations on geology, wildlife, history, glaciology or botany, among other polar subjects.

Day 10 Torngat Mountain National Park - "The land of the spirits"

Today's wilderness adventure into Torngat Mountains National Park have leave you awestruck. Within the 10,000 square-kilometer national park, established in 2008, are Canada's highest mountains east of the venerable Rockies. The park is a wilderness landscape painting brought to life: breathtaking fjords, dramatic glacial formations, stunning landscapes and wildlife. For students of Indigenous history, Torngat Mountain National Park is especially meaningful: the

The Small Cruise Ship Collection
www.small-cruise-ships.com

01432 507 280 (within UK)

info@small-cruise-ships.com | small-cruise-ships.com



The Small Cruise Ship Collection

www.small-cruise-ships.com

small-cruise-ships.com

info@small-cruise-ships.com

park is located at the northern edge of autonomous Nunatsiavut territory, which was recognized as the homeland of the Labrador Inuit in 2005, with its own constitution and administration.

In fact, these lands have been home to the Nunatsiavut and their predecessors for over 7,500 years. We are honored to explore this majestic wilderness territory with you. Torngat, in Inuktitut, means "place of the spirits," which reflects the spiritual significance of the region to the Inuit communities. As a national park, this wilderness domain offers protection to boreal woodland caribou, black bears, Labrador wolves, red and Arctic foxes, polar bears, and peregrine falcons, among other species.

You will have incredible opportunities to explore this national wilderness area during helicopter, Zodiac and kayaking excursions, and guided hikes.

[Days 11 and 12 At Sea: Observing the ever-changing terrain](#)

As we continue sailing, take note of the ever-changing landscapes and scenery throughout your 2,500-nautical mile voyage. We've progressed from a pristine tundra environment in the arctic, then down along the rocky, big-walled coast of Baffin Island, to the wind-battered coastal forests of Newfoundland and Labrador.

[Day 13 L'Anse Aux Meadows National Historic Site: Viking and Norse history](#)

As we sail toward L'Anse Aux Meadows National Historic Site on

the northern tip of Newfoundland, consider the differences in modern and ancient marine vessels. Today, you're comfortably ensconced on the state-of-the-art Ultramarine, a beautifully designed ship with helicopters, quick-launch Zodiacs, a sauna and spa, dining areas surrounded by glass, high-tech presentation spaces, cabins with the best of amenities, and a wide array of exciting off-ship adventure options. Then consider the wooden longboats that transported the Vikings an incredible 2,180 kilometres from Greenland to Newfoundland in 1000 AD. Today, you're going to visit the archeological remains of where they landed in their hand-hewn vessels. L'Anse aux Meadows National Historic Site (also a recognized UNESCO World Heritage Site) is the only confirmed Norse or Viking settlement in North America.

Enjoy a guided tour to see where Norseman Leif Erikson, son of Erik the Red, is believed to have founded "Vinland" (the East Coast area including what would later be known as Newfoundland) around 1000 AD. Explore the reconstructed sod huts and Norse ruins throughout the historic site—proof that Vikings discovered North America 500 years before Christopher Columbus's much-chronicled arrival.

[Day 14 At Sea: The music continues](#)

Enjoy another evening of kitchen party music performed by our guest artists. If you haven't already, seize the opportunity when the musicians take a break to inquire about the various musical traditions of Newfoundland and Labrador, particularly the origins of kitchen party music. Also, try to spend time with the

The Small Cruise Ship Collection

www.small-cruise-ships.com

01432 507 280 (within UK)

info@small-cruise-ships.com | small-cruise-ships.com



expedition team, all of whom are polar experts with vast expertise they're always eager to share.

Itineraries are subject to change.

Day 15 Saint Pierre and Miquelon

Experience the traditional culture of France during our visit to the islands of Saint Pierre and Miquelon. This small archipelago, only 20 kilometers from Newfoundland, is the only French territory on the North American continent. We'll disembark in the colorful and vibrant port town of Saint-Pierre, where we can stroll along the seaside, sample French patisseries and enjoy the cafe scene. Get a taste of Europe where you least expect it.

While Europeans have had a presence on the tiny archipelago since the early 17th-century, the islands are traditional territory of the Mi'kmaq, the Indigenous people who first appeared in Atlantic Canada 10,000 years ago. The Mi'kmaq culture thrives throughout Eastern Canada.

Day 16 Onward Flights

Your ship arrives at the pier in St. John's for a morning disembarkation. After breakfast, you may make your way to St. John's International Airport to connect with your homeward flight, or stay longer if you have booked additional accommodation

Please note:

The Small Cruise Ship Collection

www.small-cruise-ships.com



small-cruise-ships.com

info@small-cruise-ships.com

YOUR SHIP: ULTRAMARINE

YOUR SHIP: Ultramarine

VESSEL TYPE:

LENGTH:

PASSENGER CAPACITY:

BUILT/REFURBISHED:

Ultramarine is designed to go beyond the familiar in polar exploration, to discover new places, and to immerse you in the best the region has to offer. Equipped with two twin-engine helicopters, Ultramarine offers the most robust portfolio of adventure activities in the industry, the most spacious suites in its category, breathtaking public spaces, and more outdoor wildlife viewing spaces than other expedition ships its size. It also features an innovative mix of sustainability features that exceed all industry standards. With all this and more, Ultramarine is set to deliver the ultimate polar expedition experience. Cabin - Spacious Entryways, Personal Safes, Spa-inspired Bathrooms, Heated Bathroom Floors, Premium beds and bed linens, Convertible Beds, Individual Temperature Controls, HD Flatscreen Televisions, Oversized Windows With Sweeping Views, Electrical Supply: 220V Aboard - 2 Dining Areas, 4 Bars, Panorama Lounge, Lecture Theater, Library, Polar Boutique, Spa & Fitness Center, Oceanview Sauna, Zodiac Hangar with 4 Embarkation Points, 2 Ready Rooms with Individual Lockers, Walkaround Deck, Bridge Activities - Flightseeing (Included), Zodiac Cruising (Included), Hiking (Included), Lectures (Included), Camping (Optional), Sea

Kayaking (Optional), Stand-Up Paddleboarding (Optional), Paddle Excursions (Optional), Cross Country Skiing (Optional), Mountaineering



(Optional)

The Small Cruise Ship Collection
www.small-cruise-ships.com

01432 507 280 (within UK)

info@small-cruise-ships.com | small-cruise-ships.com

The Small Cruise Ship Collection

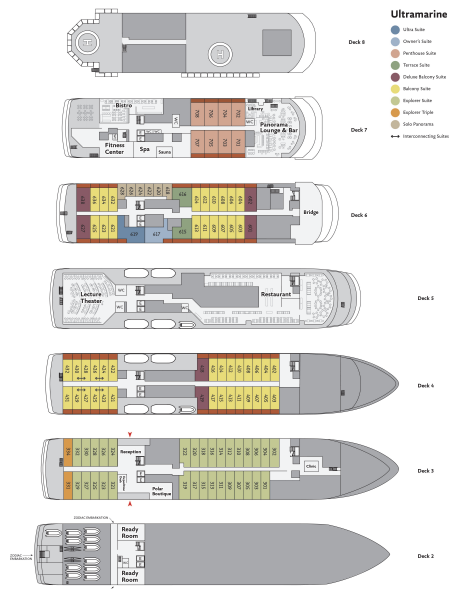
www.small-cruise-ships.com



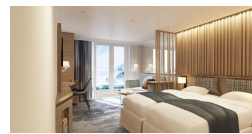
small-cruise-ships.com

info@small-cruise-ships.com

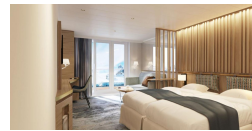
INSIDE YOUR SHIP



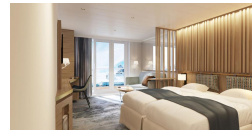
Balcony Suite. From



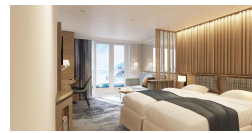
Deluxe Balcony Suite. From



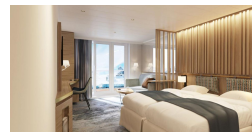
Explorer Suite. From



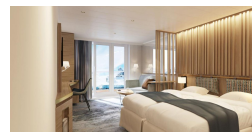
Explorer Triple. From



Owner's Suite. From



Penthouse Suite. From



Solo Panorama. From

Terrace Suite. From



The Small Cruise Ship Collection

www.small-cruise-ships.com



small-cruise-ships.com

info@small-cruise-ships.com

PRICING

18-Sep-2025 to 03-Oct-2025

Ultra Suite. From	£24786 GBP pp
Explorer Suite. From	£12597 GBP pp
Balcony Suite. From	£13821 GBP pp
Explorer Triple. From	£8823 GBP pp
Owner's Suite. From	£22287 GBP pp
Terrace Suite. From	£16830 GBP pp
Deluxe Balcony Suite. From	£16269 GBP pp
Penthouse Suite. From	£17493 GBP pp
Solo Panorama. From	£17493 GBP pp



The Small Cruise Ship Collection

www.small-cruise-ships.com

01432 507 280 (within UK)

info@small-cruise-ships.com | small-cruise-ships.com