

The Small Cruise Ship Collection

www.small-cruise-ships.com

small-cruise-ships.com

info@small-cruise-ships.com

NORTHERN PASSAGES & GLACIER BAY ABOARD SAFARI ENDEAVOUR

Your Dream Alaska is Only a Click Away. Skiff, kayak, and paddle board through fjords and inlets as wildlife greets you from land and sea. Explore the wilderness of the Tongass National Forest and Glacier Bay National Park.



ITINERARY

DAY 1 Juneau - Embarkation

There's nothing like a hearty greeting from your crew and some bon voyage bubbly. With all souls settled in on board, you're underway. From the bow, Southeast Alaska welcomes you with Coast Mountain views. (D)

DAY 2 Captain's Choice

Lynn Canal or Chatham Strait, your captain makes the call. Either choice, go with the flow. The water is fine. The guides help you gear up, and lead your adventure along the rocky outcroppings. By kayak or paddle board, take in the size of this wilderness. Bald eagles dot the tree tops. Harbor seals bob up and under. Pods of orcas—the largest in the dolphin family—skim along the water's surface. (BLD)

The Small Cruise Ship Collection

www.small-cruise-ships.com

01432 507 280 (within UK)

info@small-cruise-ships.com | small-cruise-ships.com



The Small Cruise Ship Collection

www.small-cruise-ships.com

small-cruise-ships.com

info@small-cruise-ships.com

DAY 3 Glacier Bay National Park

What a privilege. At 3.3 million acres—this UNESCO World Heritage Site and Biosphere Reserve is massive. Orange-beaked puffins, guillemots, marbled murrelets are just a few possible sightings. Keep a tally—the list will grow. Arriving at South Marble Island, you can hear and smell ‘em before you see ‘em—it’s a haulout for sea lions. Perched above around the bend, watch for mountain goats, and lower along shore, foraging bears. Up bay, glacial silt turns the water a milky white. Margerie and Grand Pacific Glaciers—one holding steady, the other retreating. Lounging harbor seals laze on bits of bergs. And if time allows, tuck up in Tidal Inlet. End this very full day with your feet up for the sail into Icy Strait. (BLD)

DAY 4 Icy Strait

Nearly to the Pacific Ocean, Icy Strait is remote and wild. The plan? Whales and marine mammals. Spouts and fin slaps are certain giveaways. More rollicking sea lions and birds. But don’t forget to look straight down. Porpoises and dolphins may hitch a ride on the bow wave. And don’t worry about missing any wildlife; it’s a favorite mission of the crew to point out any creatures they spot. Make a break for it and head for a quiet pocket along the rugged coastline. A different sort of wild than the open strait, muskeg leads to forest bushwhacks. Skiff the shore and down along kelp-threaded channels. (BLD)

DAY 5 Chichagof Island

Kick off the morn with on-deck yoga stretches (your guides love it when you join them). Meander through glacier-carved fjords along the Chichagof coast. Then stop. It’s a prime time to lower the kayaks and skiffs. Camera in hand, set off on land and sea explorations. Closer inspection by skiff, moss-dripping trees run right down to the water. Any bears in there? With one of the

world’s largest populations of bears, it’s possible. Go searching for giant trees and tidal pools. Hiking in the Tongass, it won’t take long to find them. Your eagle-eyed guides lead the pack—and pull up the rear. Later, wend along a twisting channel known for dramatic currents. (BLD)

DAY 6 Baranof Island / Peril Strait

Wind along a twisting channel known for dramatic currents. Peril Strait runs 50 miles to Salisbury Sound. The shorelines are close and it’s good territory for play. Skiff ashore and hike into the backcountry. Otters back float working to crack snacks resting on their bellies. Opening at Hoonah Sound, the squeeze is back on. Wind into Neva Strait. Watch the scenery change in the late fading light—from the hot tub of course. (BLD)

DAY 7 Krestof & Nakwasina Sounds

There aren’t many straight lines along Baranof Island. Its western side is spattered with remote, uninhabited islands. These features mean endless opportunities for adventure. Secluded coves. Tree-covered islets. Drop anchor, pick your modus operandi, and get going. Kayak, paddle board, or skiff—you’re on the level with curious sea lions and possibly whales. Rocky intertidal zones make good beach combing. Turn a stone or two to see what’s underneath. There are no groomed trails here—get out on a guided hike John Muir would approve of. Toast your voyage with a Farewell Dinner and a “photo journal” of your trip. A gift to you, from your expedition team. (BLD)

DAY 8 Sitka Disembarkation

Cruise into Sitka this morning over breakfast. Farewell new friends! Disembark and transfer to the airport or your UnCruise hotel stay or land tour. (B)

The Small Cruise Ship Collection

www.small-cruise-ships.com

01432 507 280 (within UK)

info@small-cruise-ships.com | small-cruise-ships.com



The Small Cruise Ship Collection

www.small-cruise-ships.com



small-cruise-ships.com

info@small-cruise-ships.com

Please Note:

Itineraries are guidelines; variations in itinerary and the order of days may occur to maximize your experience.



The Small Cruise Ship Collection

www.small-cruise-ships.com

01432 507 280 (within UK)

info@small-cruise-ships.com | small-cruise-ships.com

The Small Cruise Ship Collection

www.small-cruise-ships.com

small-cruise-ships.com

info@small-cruise-ships.com

YOUR SHIP: SAFARI ENDEAVOUR

YOUR SHIP: Safari Endeavour

VESSEL TYPE:

LENGTH:

PASSENGER CAPACITY:

BUILT/REFURBISHED:

The ambience aboard this newly refurbished 86-guest yacht is casual elegance with a full menu of upscale amenities. Its new design is exquisitely appointed with features such as an intimate Wine Bar and spa area including two hot tubs, sauna, fitness equipment, yoga classes, and massage suite (complete with a complimentary massage.) The Safari Endeavour's three decks provide ample outside viewing opportunities and relaxing public spaces for gathering with new found friends. The EZ Dock launch platform makes launching a kayak or stand-up paddle board and boarding a skiff easy. Onboard adventure equipment includes kayaks and stand-up paddle boards; inflatable skiffs; hiking poles; yoga mats; and hydrophones for listening to below surface sounds. There are five stateroom categories aboard the Safari Endeavour: Master; Commander; Captain; Admiral; and Commodore Suite. Depending on the category, singles, doubles or triples can be accommodated. Common to all staterooms are: Flat-screen TV/DVD; iPod docking station. Read about an extraordinary cruise week on Safari Endeavour in Alaska



The Small Cruise Ship Collection

www.small-cruise-ships.com

01432 507 280 (within UK)

info@small-cruise-ships.com | small-cruise-ships.com

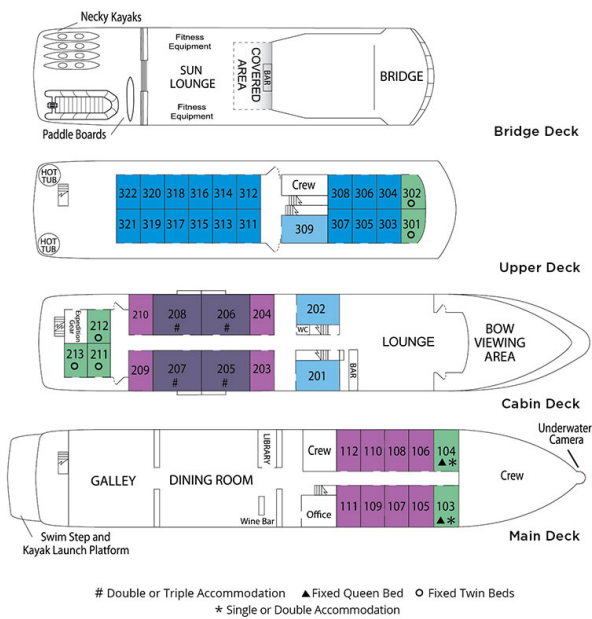
The Small Cruise Ship Collection

www.small-cruise-ships.com

small-cruise-ships.com

info@small-cruise-ships.com

INSIDE YOUR SHIP



cabin/ship diagram not to scale

Admiral Cabin



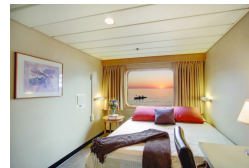
Commodore Suite



Navigator Cabin



Pathfinder Cabin



The Small Cruise Ship Collection

www.small-cruise-ships.com

01432 507 280 (within UK)

info@small-cruise-ships.com | small-cruise-ships.com



The Small Cruise Ship Collection

www.small-cruise-ships.com



small-cruise-ships.com

info@small-cruise-ships.com

PRICING

26-Apr-2025 to 03-May-2025

Commodore Suite	£6853 GBP pp
Trailblazer Cabin	£4158 GBP pp
Pathfinder Cabin	£4466 GBP pp
Navigator Cabin	£3773 GBP pp
Single Navigator	£7315 GBP pp
Admiral Cabin	£4851 GBP pp

03-May-2025 to 10-May-2025

Commodore Suite	£7854 GBP pp
Navigator Cabin	£4312 GBP pp
Admiral Cabin	£5544 GBP pp
Pathfinder Cabin	£5082 GBP pp
Trailblazer Cabin	£4697 GBP pp
Single Navigator	£8239 GBP pp

10-May-2025 to 17-May-2025

Admiral Cabin	£6083 GBP pp
Commodore Suite	£8547 GBP pp
Pathfinder Cabin	£5544 GBP pp
Trailblazer Cabin	£5159 GBP pp
Navigator Cabin	£4697 GBP pp
Single Navigator	£9086 GBP pp

17-May-2025 to 24-May-2025

Pathfinder Cabin	£5544 GBP pp
Trailblazer Cabin	£5159 GBP pp
Navigator Cabin	£4697 GBP pp
Single Navigator	£9086 GBP pp
Commodore Suite	£8547 GBP pp
Admiral Cabin	£6083 GBP pp

24-May-2025 to 31-May-2025

Admiral Cabin	£6545 GBP pp
Pathfinder Cabin	£6006 GBP pp
Single Navigator	£9702 GBP pp
Commodore Suite	£9240 GBP pp
Navigator Cabin	£5082 GBP pp
Trailblazer Cabin	£5544 GBP pp

31-May-2025 to 07-Jun-2025

Navigator Cabin	£5082 GBP pp
Trailblazer Cabin	£5544 GBP pp
Admiral Cabin	£6545 GBP pp
Commodore Suite	£9240 GBP pp
Pathfinder Cabin	£6006 GBP pp
Single Navigator	£9702 GBP pp



01432 507 280 (within UK)

info@small-cruise-ships.com | small-cruise-ships.com



The Small Cruise Ship Collection

www.small-cruise-ships.com



small-cruise-ships.com

info@small-cruise-ships.com

PRICING

07-Jun-2025 to 14-Jun-2025

Pathfinder Cabin	£6391 GBP pp
Single Navigator	£10395 GBP pp
Commodore Suite	£9933 GBP pp
Trailblazer Cabin	£5929 GBP pp
Navigator Cabin	£5390 GBP pp
Admiral Cabin	£7007 GBP pp

14-Jun-2025 to 21-Jun-2025

Navigator Cabin	£5390 GBP pp
Commodore Suite	£9933 GBP pp
Admiral Cabin	£7007 GBP pp
Trailblazer Cabin	£5929 GBP pp
Pathfinder Cabin	£6391 GBP pp
Single Navigator	£10395 GBP pp

21-Jun-2025 to 28-Jun-2025

Commodore Suite	£9933 GBP pp
Admiral Cabin	£7007 GBP pp
Pathfinder Cabin	£6391 GBP pp
Trailblazer Cabin	£5929 GBP pp
Navigator Cabin	£5390 GBP pp
Single Navigator	£10395 GBP pp

28-Jun-2025 to 05-Jul-2025

Single Navigator	£10395 GBP pp
Trailblazer Cabin	£5929 GBP pp
Navigator Cabin	£5390 GBP pp
Commodore Suite	£9933 GBP pp
Admiral Cabin	£7007 GBP pp
Pathfinder Cabin	£6391 GBP pp

05-Jul-2025 to 12-Jul-2025

Admiral Cabin	£7007 GBP pp
Pathfinder Cabin	£6391 GBP pp
Navigator Cabin	£5390 GBP pp
Commodore Suite	£9933 GBP pp
Single Navigator	£10395 GBP pp
Trailblazer Cabin	£5929 GBP pp

12-Jul-2025 to 19-Jul-2025

Single Navigator	£10395 GBP pp
Admiral Cabin	£7007 GBP pp
Pathfinder Cabin	£6391 GBP pp
Trailblazer Cabin	£5929 GBP pp
Navigator Cabin	£5390 GBP pp
Commodore Suite	£9933 GBP pp



The Small Cruise Ship Collection

www.small-cruise-ships.com



small-cruise-ships.com

info@small-cruise-ships.com

PRICING

19-Jul-2025 to 26-Jul-2025

Admiral Cabin	£7007 GBP pp
Pathfinder Cabin	£6391 GBP pp
Trailblazer Cabin	£5929 GBP pp
Navigator Cabin	£5390 GBP pp
Single Navigator	£10395 GBP pp
Commodore Suite	£9933 GBP pp

26-Jul-2025 to 02-Aug-2025

Commodore Suite	£9933 GBP pp
Admiral Cabin	£7007 GBP pp
Navigator Cabin	£5390 GBP pp
Pathfinder Cabin	£6391 GBP pp
Trailblazer Cabin	£5929 GBP pp
Single Navigator	£10395 GBP pp

02-Aug-2025 to 09-Aug-2025

Admiral Cabin	£7007 GBP pp
Pathfinder Cabin	£6391 GBP pp
Trailblazer Cabin	£5929 GBP pp
Navigator Cabin	£5390 GBP pp
Single Navigator	£10395 GBP pp
Commodore Suite	£9933 GBP pp

09-Aug-2025 to 16-Aug-2025

Navigator Cabin	£5390 GBP pp
Pathfinder Cabin	£6391 GBP pp
Trailblazer Cabin	£5929 GBP pp
Commodore Suite	£9933 GBP pp
Admiral Cabin	£7007 GBP pp
Single Navigator	£10395 GBP pp

16-Aug-2025 to 23-Aug-2025

Admiral Cabin	£7007 GBP pp
Pathfinder Cabin	£6391 GBP pp
Trailblazer Cabin	£5929 GBP pp
Commodore Suite	£9933 GBP pp
Single Navigator	£10395 GBP pp
Navigator Cabin	£5390 GBP pp

23-Aug-2025 to 30-Aug-2025

Commodore Suite	£9933 GBP pp
Admiral Cabin	£7007 GBP pp
Single Navigator	£10395 GBP pp
Pathfinder Cabin	£6391 GBP pp
Trailblazer Cabin	£5929 GBP pp
Navigator Cabin	£5390 GBP pp



The Small Cruise Ship Collection

www.small-cruise-ships.com



small-cruise-ships.com

info@small-cruise-ships.com

PRICING

30-Aug-2025 to 06-Sep-2025

Commodore Suite	£9240 GBP pp
Navigator Cabin	£5082 GBP pp
Admiral Cabin	£6545 GBP pp
Pathfinder Cabin	£6006 GBP pp
Trailblazer Cabin	£5544 GBP pp
Single Navigator	£9702 GBP pp

Pathfinder Cabin	£5082 GBP pp
Admiral Cabin	£5544 GBP pp
Commodore Suite	£7854 GBP pp
Navigator Cabin	£4312 GBP pp
Trailblazer Cabin	£4697 GBP pp
Single Navigator	£8239 GBP pp

06-Sep-2025 to 13-Sep-2025

Pathfinder Cabin	£5544 GBP pp
Navigator Cabin	£4697 GBP pp
Commodore Suite	£8547 GBP pp
Trailblazer Cabin	£5159 GBP pp
Admiral Cabin	£6083 GBP pp
Single Navigator	£9086 GBP pp

ADDITIONAL CHARGES:

Port Taxes & Fees. From 375 USD pp

13-Sep-2025 to 20-Sep-2025

Commodore Suite	£7854 GBP pp
Admiral Cabin	£5544 GBP pp
Pathfinder Cabin	£5082 GBP pp
Navigator Cabin	£4312 GBP pp
Single Navigator	£8239 GBP pp
Trailblazer Cabin	£4697 GBP pp

20-Sep-2025 to 27-Sep-2025



01432 507 280 (within UK)

info@small-cruise-ships.com | small-cruise-ships.com