

The Small Cruise Ship Collection

www.small-cruise-ships.com



small-cruise-ships.com

info@small-cruise-ships.com

NORTH SPITSBERGEN, IN SEARCH OF POLAR BEAR & PACK ICE (PLANGIUS)

Start your North Spitsbergen cruise with a trek around historic Longyearben, then join our expedition to the north of the island to take in the fantastically beautiful landscapes, the thousands of seabirds, and of course the star of the show, the polar bear. Sailing to Raudfjorden, on the north coast of Spitsbergen, you take in an expansive fjord spilling with glaciers – and maybe even visited by ringed and bearded seals. The cliffs and shoreline of this fjord also support thriving seabird colonies, rich vegetation, and the possibility of polar bears. We hope to cruise to the 5-kilometer-long (3.1 miles) face of the precipitous Monaco Glacier before entering the Hinlopen Strait, home to bearded seals, ringed seals, and polar bears. At the entrance there is even the possibility to spot blue whales. The northernmost point of your voyage may be north of Nordaustlandet, in the Seven Islands. Here you reach 80° north, just 870 km (540 miles) from the geographic North Pole. Polar bears inhabit this region. We plan to sail to the edge of the ice-pack in search of whales before heading back to dry land in search of terrestrial wildlife.



ITINERARY

Day 1: Largest town, biggest island

You touch down in Longyearbyen, the administrative center of Spitsbergen, the largest island of the Svalbard archipelago. Enjoy strolling around this former mining town, whose parish church and Svalbard Museum make for fascinating attractions. Though the countryside appears stark, more than a hundred species of plant have been recorded in it. In the early evening the ship sails out of Isfjorden, where you might spot the first minke whale of your voyage.

Day 2: Route to Raudfjorden

Sailing to Raudfjorden, on the north coast of Spitsbergen, you take in an expansive fjord spilling with glaciers – and maybe even visited by ringed and bearded seals. The cliffs and



The Small Cruise Ship Collection

www.small-cruise-ships.com

small-cruise-ships.com

info@small-cruise-ships.com

shoreline of this fjord also support thriving seabird colonies, rich vegetation, and the possibility of polar bears.

Day 3: The massive Monaco Glacier

Depending on the weather, you could sail into Liefdefjorden and cruise within sight of the 5-kilometer-long (3.1 miles) face of the precipitous Monaco Glacier. The waters in front of this glacier are a favorite feeding spot for thousands of kittiwakes, and the base of the ice is a popular polar bear hunting ground. If ice conditions prevent sailing here early in the season, an alternate route along the west coast of Spitsbergen can be implemented.

Day 4: Highlights of Hinlopen

Today you sail into Hinlopen Strait, home to bearded seals, ringed seals, and polar bears. At the entrance there is even the possibility to spot blue whales. After cruising among the ice floes of Lomfjordshalvøya in the Zodiacs, you can view the bird cliffs of Alkefjellet with their thousands of Brünnich's guillemots. On the east side of Hinlopen Strait, you may attempt a landing on Nordaustlandet. Here reindeer, pink-footed geese, and walrus are likely sights. You can take an alternate route if ice prevents entry into Hinlopen.

Day 5: Stop at the Seven Islands

The northernmost point of your voyage may be north of Nordaustlandet, in the Seven Islands. Here you reach 80° north, just 870 km (540 miles) from the geographic North Pole. Polar bears inhabit this region, so the ship may park for several hours among the pack ice before wheeling around west again.

Day 6: Sailing the continental shelf

While retracing your route west, keep watch for polar bears and elusive Greenland (bowhead) whales. About 40 nautical miles

west of Spitsbergen, you sail the edge of the continental shelf. Here fin whales forage during the summer in the upwelling zones (where cold, nutrient-rich water wells up from below the sea's surface) that run along the Spitsbergen banks. At the mouth of Kongsfjorden, you have a good chance of sighting minke whales.

Day 7: Reindeer, foxes, and so many seabirds

Walrus sometimes haul out in Forlandsundet, your next stop. Alternatively, you might sail into St. Johns Fjord or south to the mouth of Isfjorden, landing at Alkhornet. Seabirds nest on these cliffs, Arctic foxes search below for fallen eggs and chicks, and reindeer graze the sparse vegetation. You arrive in Longyearbyen later at night.

Day 8: There and back again

Every adventure, no matter how grand, must eventually come to an end. You disembark in Longyearbyen, taking home memories that will accompany you wherever your next adventure lies.

Please Note:

All itineraries are for guidance only. Programs may vary depending on ice, weather, and wildlife conditions. The on-board expedition leader determines the final itinerary.

The Small Cruise Ship Collection

www.small-cruise-ships.com

01432 507 280 (within UK)

info@small-cruise-ships.com | small-cruise-ships.com



The Small Cruise Ship Collection

www.small-cruise-ships.com

small-cruise-ships.com

info@small-cruise-ships.com

YOUR SHIP: HONDIUS

YOUR SHIP: **Hondius**

VESSEL TYPE:

LENGTH:

PASSENGER CAPACITY:

BUILT/REFURBISHED:

Hondius is the first-registered Polar Class 6 vessel in the world, meeting the latest and highest Lloyd's Register demands for ice-strengthened cruise vessels. Hondius also exceeds the requirements of the Polar Code as adopted by the International Maritime Organization (IMO), allowing you to enjoy the polar regions as much as possible while impacting them as little as possible. Upon completion, Hondius will be the most flexible, advanced, innovative ice-strengthened vessel in the polar regions. It is optimized for exploratory voyages that provide you the utmost first-hand contact with the Arctic and Antarctica. Hotel comfort, expedition class Hondius offers high-quality accommodation for 176 passengers in a range of suites and cabins. The spacious 'Hondius' suite (35 square metres, 377 square feet), six grand suites with balconies (27 square metres, 291 square feet), eight junior suites (19 to 20 square metres, 205 to 215 square feet), eight superior cabins (20 to 21 square metres, 215 to 226 square feet), 11 twin deluxe cabins, (19 to 21 square metres, 205 to 226 square feet), 14 twin window cabins (12 to 14 square metres, 129 to 151 square feet) as well as 28 twin porthole cabins, two triple porthole cabins, and four quadruple porthole cabins that vary in size from 12 to 18

square metres, or 129 to 194 square feet all offer a high level of accommodation. The passenger capacity certificate for Hondius is 196 persons. One deck consists of a large observation lounge and separate lecture room, which are reserved for a wide variety of interactive workshops, exhibitions, and performances particular to Hondius. Though elegantly designed in stylish mid-century modern decor, this vessel holds true to Oceanwide's distinctive cozy and informal atmosphere. Swift & safe ship-to-shore operations It is the philosophy of Hondius' managers to keep sea time as short as possible so that they can focus instead on fast, effective access to shore and near-shore activities. To give you the maximum contact with the nature and wildlife you traveled so far to see, they employ a tough fleet of rigid-hull inflatable Zodiac boats that guarantee swift and safe landing operations for all passengers at the same time. Hondius has two separate gangways and a sheltered indoor Zodiac embarkation platform that can also be used for special outdoor activities, such as kayaking. The fast, flexible, friendly heart of the polar regions The top priority is taking advantage of every wildlife and terrain opportunity as it occurs. To keep the itineraries flexible itineraries and the response time rapid, Hondius is equipped with advanced stabilizers and two main engines capable of powering the vessel up to 15 knots. But Hondius sacrifices no warmth to achieve its keen polar edge: You will have 72 crew and staff members (including expedition and hotel staff) at your service while on board, ensuring that what little time you do spend on the ship you will spend comfortably

The Small Cruise Ship Collection
www.small-cruise-ships.com

01432 507 280 (within UK)

info@small-cruise-ships.com | small-cruise-ships.com



The Small Cruise
Ship Collection

www.small-cruise-ships.com

small-cruise-ships.com

info@small-cruise-ships.com



entertained.

The Small Cruise Ship Collection

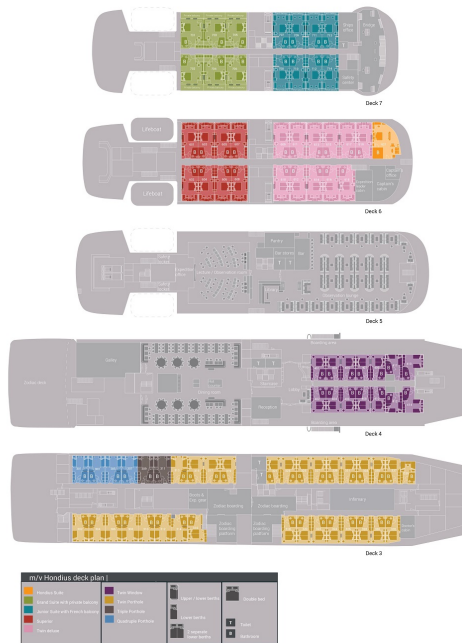
www.small-cruise-ships.com



small-cruise-ships.com

info@small-cruise-ships.com

INSIDE YOUR SHIP



Grand Suite with Private Balcony Junior Suite



Quadruple Porthole

Superior

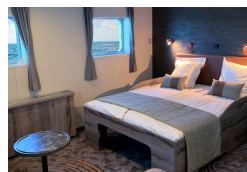


Triple Porthole

Twin Deluxe

Twin Porthole

Twin Window



The Small Cruise Ship Collection

www.small-cruise-ships.com



small-cruise-ships.com

info@small-cruise-ships.com

PRICING

03-Jun-2025 to 10-Jun-2025

Superior	£5967 GBP pp
Twin Window	£4966 GBP pp
Twin Porthole	£4581 GBP pp
Triple Porthole	£4119 GBP pp
Twin Deluxe	£5236 GBP pp
Quadruple Porthole	£3311 GBP pp

09-Jun-2025 to 16-Jun-2025

Junior Suite	£6814 GBP pp
Superior	£5967 GBP pp
Grand Suite with Private Balcony	£7353 GBP pp
Quadruple Porthole	£3311 GBP pp
Twin Window	£4966 GBP pp
Twin Porthole	£4581 GBP pp
Twin Deluxe	£5236 GBP pp
Triple Porthole	£4119 GBP pp

16-Jun-2025 to 23-Jun-2025

Superior	£5967 GBP pp
Twin Deluxe	£5236 GBP pp
Twin Window	£4966 GBP pp
Grand Suite with Private Balcony	£7353 GBP pp
Junior Suite	£6814 GBP pp
Twin Porthole	£4581 GBP pp
Triple Porthole	£4119 GBP pp
Quadruple Porthole	£3311 GBP pp

23-Jun-2025 to 30-Jun-2025

Grand Suite with Private Balcony	£7353 GBP pp
Junior Suite	£6814 GBP pp
Superior	£5967 GBP pp
Twin Deluxe	£5236 GBP pp
Twin Window	£4966 GBP pp
Twin Porthole	£4581 GBP pp
Triple Porthole	£4119 GBP pp
Quadruple Porthole	£3311 GBP pp

24-Jun-2025 to 01-Jul-2025

Triple Porthole	£4119 GBP pp
Quadruple Porthole	£3311 GBP pp
Twin Deluxe	£5236 GBP pp
Superior	£5967 GBP pp
Twin Window	£4966 GBP pp
Twin Porthole	£4581 GBP pp