



The Small Cruise
Ship Collection

www.small-cruise-ships.com



small-cruise-ships.com

info@small-cruise-ships.com

NEW GUINEA ODYSSEY ABOARD LE LAPEROUSE

This 17-day PONANT expedition cruise aboard Le Lapérouse will take you to explore the wonders and ancestral tribes of Papua New Guinea. You will board your ship in Cairns and Le Lapérouse will sail for Papua New Guinea, a fascinating land that is home to no fewer than 700 ethnic groups within a highly diverse yet mainly unexplored ecosystem. Your call at Tufi will be one of the highlights of your voyage. Dubbed the Scandinavia of the Tropics, you will undoubtedly fall under the charm of this picturesque region, with its deep 'fjords' known locally as 'rias', which were formed through volcanic activity. In this unique setting, local Papuan tribes will share their customs, beliefs and artwork with you. You will then head north along the coast to Madang, nicknamed 'the most beautiful city in the South Pacific'. Within this stunning province exists great geographical diversity and 170 different languages are spoken there. Its festival showcases this richness and offers colourful traditional performances or 'sing sings' by many of the cultural groups of the province. These include the mysterious Asaro Mudmen, who re-enact a warrior episode from their history wearing masks of mud, their bodies coated in clay. In the village of Kopar, situated at the mouth of the Sepik River, you will be welcomed with cultural performances and witness life in a traditional village. As you voyage across Western New Guinea you will experience Cenderawasih Bay, with an unforgettable opportunity to swim with whale sharks and in the spectacular Kitikiti Waterfall, surrounded by lush nature. You will then set sail towards the Kei Islands, located in the Maluku Islands. These hidden gems surrounded by unbelievably blue water boast some of the most beautiful white-sand beaches in Indonesia. Before

ending your cruise in Darwin, you will sail to the heart of Triton Bay. Located within a protected marine environment in the middle of the Coral Triangle, you will enjoy an unforgettable zodiac cruise through the spectacular rainforest-capped karst islands. The wildlife encounters described above illustrate possible experiences only and cannot be



guaranteed.

ITINERARY

Day 1 CAIRNS

Washed by the Coral Sea, the harbour town of Cairns is located on Australia's north-east coast. The seafront esplanade is a popular place for locals and visitors to walk, swim and picnic

The Small Cruise
Ship Collection

www.small-cruise-ships.com

01432 507 280 (within UK)

info@small-cruise-ships.com | small-cruise-ships.com



The Small Cruise Ship Collection

www.small-cruise-ships.com



small-cruise-ships.com

info@small-cruise-ships.com

under the shade of swaying palm trees. The hills surrounding Cairns form the gateway to the Queensland Rainforests, proclaimed a UNESCO World Heritage site for their fauna and flora from the Gondwana era.

Day 2 AT SEA

During your day at sea, make the most of the many services and activities on board. Treat yourself to a moment of relaxation in the spa or stay in shape in the fitness centre. Depending on the season, let yourself be tempted by the swimming pool or a spot of sunbathing. This day without a port of call will also be an opportunity to enjoy the conferences or shows proposed on board, to do some shopping in the boutique or to meet the PONANT photographers in their dedicated space. As for lovers of the open sea, they will be able to visit the ship's upper deck to admire the spectacle of the waves and perhaps be lucky enough to observe marine species. A truly enchanted interlude, combining comfort, rest and entertainment.

Day 3 ALOTAU

Alotau became the provincial capital of Milne Bay in 1969 and today has a population of approximately 16,000. It serves as our port of entry into Papua New Guinea. Missionaries, miners, pearl divers, Japanese and American warships have all contributed to the History of Milne Bay. Perhaps the most significant history surrounds the Battle of Milne Bay. It was here that the invading Japanese army suffered their first land defeat in the Pacific War in 1942. A memorial park at the battle site commemorates the event. The local people are warm and welcoming resulting in one of the most relaxed, secure and easy-going towns in Papua New Guinea. Join your expedition team for a tour taking in the town markets and WWII memorials.

Day 4 TUFU

Often described as the "Scandinavia of the tropics". The spectacular Tufu "fiords" plunge over 90 metres deep and rise over 150 metres vertically above the water making for a spectacular backdrop. The traditional way of life plays an important role amongst the villagers with many living in isolated areas along the coast of Cape Nelson and on the slopes of Mount Trafalgar. The area is known for its production of tapa cloth, made from the bark of the paper mulberry tree and skilfully decorated. Guests will travel into the ancient mangrove forests of the Fiords to witness one of the most colourful traditional performances in all of Papua New Guinea. There is also the opportunity to swim and snorkel in the clear waters of Kamo Beach.

Day 5 TAMI ISLANDS

The Tami Islands (Kalal, Wanam & Idjan) are a small group of uplifted coral atolls, with two main villages on the two larger islands and many smaller reefs and cays. In the centre is a beautiful, crystal clear blue lagoon with abundant marine life and stunning coral formations. The islands, located in Morobe Province not far from the town of Finschhafen are seldom-visited. Tami Islanders are renowned artisans and are most famous for their intricately decorated bowls.

Day 6 MADANG

Madang Township was once known as the "prettiest town in the South Pacific". Its peninsula setting is a show-place of parks, waterways, luxuriant shade trees and sparkling tropical islands. The diverse geographical nature of Madang province is reflected in the 170 different languages that are spoken. This diversity is showcased in the Madang festival with its colourful displays of "sing sings" performed by numerous cultural groups from across



The Small Cruise Ship Collection

www.small-cruise-ships.com



small-cruise-ships.com

info@small-cruise-ships.com

the Madang Province. Today, you will also be treated to a number of cultural performances showcasing the local customs, costume and dance of the coastal, midland and highland communities.

Day 7 KOPAR

The people of the Sepik region speak more than 250 languages and are knitted together in systems of trade and cultural interaction. Kopar village's location at the mouth of the Sepik river makes it an important trading point for surrounding villages. Here the crocodile is worshiped as the water spirit. As is custom in all Sepik societies, the men's house is the place where important decisions regarding the village are made, where boys are initiated and become men and ceremonies to please the spirits are performed. Guests will be welcomed ashore with a ceremony and cultural performance, including the famous "dragon dance." There will be an opportunity to walk around the village of Kopar to experience traditional life in the lower Sepik.

Day 8 JAYAPURA, PAPUA

Jayapura City is the provincial capital of Papua province, Indonesia. It is a modern industrial city contrasting markedly with the surrounding hinterland where Papuan tribes live a subsistence lifestyle. The vast majority of Jayapurans are transmigrants from western Indonesia who control most of the industry and economics of the region. Leaving the city behind, guest will travel to the traditional village of Asai on Lake Sentani. Here you can enjoy a cultural performance and witness life in a traditional Papuan village. Asai is famous for its production of Tapa cloth.

Day 9 AT SEA

During your day at sea, make the most of the many services and activities on board. Treat yourself to a moment of relaxation in the spa or stay in shape in the fitness centre. Depending on the season, let yourself be tempted by the swimming pool or a spot of sunbathing. This day without a port of call will also be an opportunity to enjoy the conferences or shows proposed on board, to do some shopping in the boutique or to meet the PONANT photographers in their dedicated space. As for lovers of the open sea, they will be able to visit the ship's upper deck to admire the spectacle of the waves and perhaps be lucky enough to observe marine species. A truly enchanted interlude, combining comfort, rest and entertainment.

Days 10 - 11 CENDERAWASIH BAY

Cenderawasih Bay is located at the western end of New Guinea Island, south-east of the Bird's Head Peninsula. Covering more than 1.4 million hectares the bay is home to an abundant array of uninhabited islands, pristine coral reefs and the world's largest fish, the Whale Shark. Over the years the whale sharks have learnt the habits of local fishermen who catch baitfish at night in nets lowered from fishing vessels known as "Bagans". The Whale Sharks are now regular visitors feeding on the baitfish that spill from the nets at the surface. Cenderawasih Bay is part of the Bird's Head seascape, the centre of marine biodiversity at the heart of the coral triangle. Do not miss the chance to discover these multicoloured reefs and extraordinary marine fauna. Depending on the conditions, you may also have the opportunity to snorkel and swim with Whale Sharks.

Day 12 AT SEA

During your day at sea, make the most of the many services and activities on board. Treat yourself to a moment of relaxation in the spa or stay in shape in the fitness centre. Depending on the



The Small Cruise Ship Collection

www.small-cruise-ships.com

01432 507 280 (within UK)

info@small-cruise-ships.com | small-cruise-ships.com



The Small Cruise Ship Collection

www.small-cruise-ships.com



small-cruise-ships.com

info@small-cruise-ships.com

season, let yourself be tempted by the swimming pool or a spot of sunbathing. This day without a port of call will also be an opportunity to enjoy the conferences or shows proposed on board, to do some shopping in the boutique or to meet the PONANT photographers in their dedicated space. As for lovers of the open sea, they will be able to visit the ship's upper deck to admire the spectacle of the waves and perhaps be lucky enough to observe marine species. A truly enchanted interlude, combining comfort, rest and entertainment.

Day 13 KITIKITI WATERFALL, MOMMON

North of Triton Bay, in the Indonesian province of West Papua, lie the Bomberai Peninsula and Sebakor Bay. A real paradise for divers, this protected, authentic and very wild area boasts an exceptional biodiversity. Here, you will be able to admire the superb Kitikiti Waterfall where you could enjoy a swim or snorkel surrounded by lush nature, both on land and under water.

Day 14 TRITON BAY, WEST PAPUA

Triton Bay is one of three regions in Indonesia's West Papua province that comprise the Bird's Head Seascape (the other two are Raja Ampat and Cenderawasih Bay), which is now considered by marine biologists to be the epicentre of the Coral Triangle. It contains more fish and coral species than anywhere else on the planet. Its unparalleled marine biodiversity and endemism, habitat richness, and relatively intact nature of its ecosystems are unique. Join your expedition team for a zodiac voyage through the spectacular rainforest capped karst islands. Later in the day enjoy the opportunity to explore the richness of the underwater realm.

Day 15 KEI ISLANDS, MALUKU ISLANDS

The Kei Islands are blessed with kilometres of stunning, yet almost entirely empty, white-sand beaches and a deeply hospitable population. Beneath the mostly Christian facade, Kei culture is fascinatingly distinctive. Local history holds that ancestors of contemporary Kei islanders came from Bali, part of the expanding Hindu Majapahit kingdom from the western archipelago. Enjoy a day of swimming and snorkelling on an idyllic uninhabited picture postcard tropical island.

Day 16 AT SEA

During your day at sea, make the most of the many services and activities on board. Treat yourself to a moment of relaxation in the spa or stay in shape in the fitness centre. Depending on the season, let yourself be tempted by the swimming pool or a spot of sunbathing. This day without a port of call will also be an opportunity to enjoy the conferences or shows proposed on board, to do some shopping in the boutique or to meet the PONANT photographers in their dedicated space. As for lovers of the open sea, they will be able to visit the ship's upper deck to admire the spectacle of the waves and perhaps be lucky enough to observe marine species. A truly enchanted interlude, combining comfort, rest and entertainment.

Day 17 DARWIN

Darwin is located in Australia's Northern Territory which is also known as the "Top End". It is the capital city and the most populated town of the Northern Territory. Darwin is a beautiful tropical city, a melting pot of people and cultures, over 50 different cultures live and work side by side that prides itself in its unique and friendly laid-back lifestyle. Come discover the town's still recent history through its emblematic buildings such as the new Parliament House opened in 1994, a magnificent example of tropical architecture or Admiralty House declared



The Small Cruise Ship Collection

www.small-cruise-ships.com

01432 507 280 (within UK)

info@small-cruise-ships.com | small-cruise-ships.com



The Small Cruise Ship Collection

www.small-cruise-ships.com



small-cruise-ships.com

info@small-cruise-ships.com

heritage place, a tropical-style home elevated on stilts that has survived two cyclones and numerous air raids.

Please note:

Itineraries are subject to change.



The Small Cruise
Ship Collection

www.small-cruise-ships.com

01432 507 280 (within UK)

info@small-cruise-ships.com | small-cruise-ships.com



The Small Cruise Ship Collection

www.small-cruise-ships.com



small-cruise-ships.com

info@small-cruise-ships.com

YOUR SHIP: LE JACQUES CARTIER

YOUR SHIP: Le Jacques Cartier

VESSEL TYPE:

LENGTH:

PASSENGER CAPACITY:

BUILT/REFURBISHED:

Featuring innovative and environmentally-friendly equipment, elegantly designed staterooms, spacious suites with large windows, and lounge areas that open onto the outside, this new limited-capacity yacht boasting just 92 staterooms and suites will offer you a truly unique cruising experience. Le Jacques Cartier will embody refinement, intimacy and comfort. Aboard this ship that flies the French flag, you will experience the incomparable pleasure of an intimate cruise, with the possibility of exploring an ever-increasing range of destinations in an ethnic-chic ambiance with luxury service. Experience a luxurious setting where the accent is on authenticity and passion for travel. RESTAURANTS As it is an essential part of French culture, gastronomy will naturally have pride of place aboard this new ship. To the back of Deck 4, you will find a 260 m² panoramic restaurant which can accommodate all of our passengers in a single sitting. Designed differently to that on our other ships, this dining area, which opens onto the outside, will have a buffet of salads, desserts and cheeses at your disposal. Our discreet and attentive crew will provide table service for hot meals. In a relaxed atmosphere, an outdoor grill on Deck 3 will serve grilled meats with a variety of salads and desserts. PUBLIC AREAS Le

Jacques Cartier has many common areas that are designed and equipped to meet all of your needs while preserving the intimacy of each passenger. A 140 m² reception area includes: A reception/concierge desk, An excursions desk, The ship's administrative services, The sales office, manned by our Guest Relations Officer, Our 50 m² boutique which sells clothing, jewellery, beauty products, postcards and various accessories, Toilets accessible to passengers with reduced mobility. A new hydraulic platform with adjustable height provides: Easier boarding than on any other cruise ship, Easier Zodiac embarkation and disembarkation for expeditions, Easier access to the sea for swimming and practising various water sports such as kayaking or paddle-boarding. A pool deck offering: A pool with a panoramic view, equipped with a counter-current swimming system, A pleasant solarium, An outdoor bar and lounge with armchairs and sofas. A 200 m² main lounge which can accommodate all of our passengers to share convivial moments and to host activities organised during the day or evening. Lastly, a theatre that seats 188, equipped with: The latest sound and lighting technology, A LED wall as the stage backdrop, for the projection of high-resolution images and videos. Please click the following links to read more about Ponant and the other Ponant



The Small Cruise Ship Collection

www.small-cruise-ships.com

01432 507 280 (within UK)

info@small-cruise-ships.com | small-cruise-ships.com



The Small Cruise Ship Collection

www.small-cruise-ships.com



small-cruise-ships.com

info@small-cruise-ships.com



cruise ships.



The Small Cruise Ship Collection

www.small-cruise-ships.com

01432 507 280 (within UK)

info@small-cruise-ships.com | small-cruise-ships.com



The Small Cruise Ship Collection

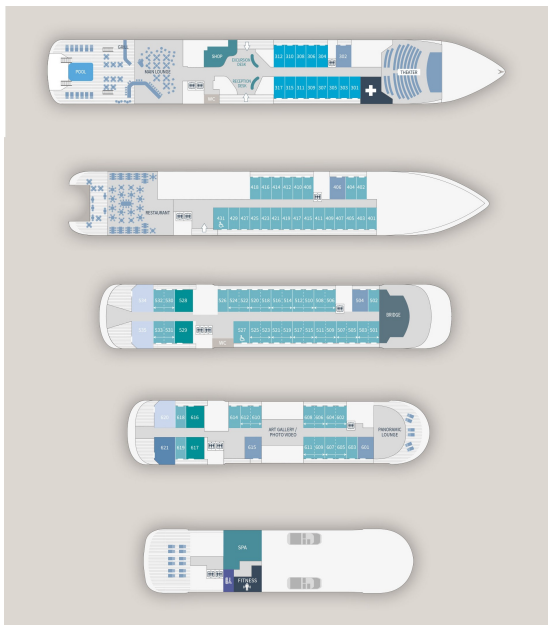
www.small-cruise-ships.com



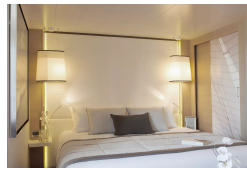
small-cruise-ships.com

info@small-cruise-ships.com

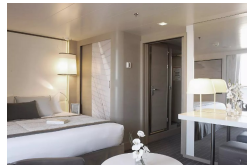
INSIDE YOUR SHIP



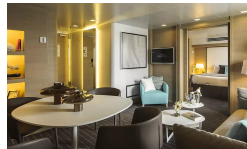
DeLuxe Stateroom



Deluxe Suite



Owner's Suite



Prestige Stateroom - Deck 4



Prestige Stateroom - Deck 5

Prestige Stateroom - Deck 6

Prestige Suite - Deck 5

Prestige Suite - Deck 6



The Small Cruise Ship Collection

www.small-cruise-ships.com

01432 507 280 (within UK)

info@small-cruise-ships.com | small-cruise-ships.com



The Small Cruise Ship Collection

www.small-cruise-ships.com



small-cruise-ships.com

info@small-cruise-ships.com

PRICING

21-Sep-2025 to 07-Oct-2025

Prestige Suite - Deck 6	£17901 GBP pp
DeLuxe Stateroom	£7027 GBP pp
Prestige Stateroom - Deck 5	£8267 GBP pp
Prestige Stateroom - Deck 6	£8761 GBP pp
Prestige Stateroom - Deck 4	£7859 GBP pp
Superior Stateroom	£6446 GBP pp
Deluxe Suite	£12418 GBP pp
Prestige Suite - Deck 5	£16988 GBP pp
Owner's Suite	£20634 GBP pp

Superior Stateroom	£8374 GBP pp
Prestige Suite - Deck 5	£22169 GBP pp
Owner's Suite	£28478 GBP pp
Prestige Stateroom - Deck 6	£11413 GBP pp
DeLuxe Stateroom	£9129 GBP pp
Prestige Suite - Deck 6	£23368 GBP pp
Prestige Stateroom - Deck 5	£10761 GBP pp
Deluxe Suite	£16197 GBP pp
Prestige Stateroom - Deck 4	£10215 GBP pp

06-Nov-2025 to 22-Nov-2025

Prestige Suite - Deck 5	£22169 GBP pp
Prestige Stateroom - Deck 4	£10215 GBP pp
Prestige Stateroom - Deck 5	£10761 GBP pp
Prestige Stateroom - Deck 6	£11413 GBP pp
DeLuxe Stateroom	£9129 GBP pp
Superior Stateroom	£8374 GBP pp
Owner's Suite	£28478 GBP pp
Prestige Suite - Deck 6	£23368 GBP pp
Deluxe Suite	£16197 GBP pp

22-Nov-2025 to 08-Dec-2025



01432 507 280 (within UK)

info@small-cruise-ships.com | small-cruise-ships.com