



The Small Cruise
Ship Collection

www.small-cruise-ships.com



small-cruise-ships.com

info@small-cruise-ships.com

NATURAL WONDERS, ENGINEERING MARVELS - COSTA RICA & PANAMA CRUISING

Journey from Costa Rica's lush Pacific coast to the engineering marvel of the Panama Canal, experiencing the region's rich eco-life and breathtaking landscapes. Begin in Puntarenas, sailing to hidden gems like Punta Leona and Quepos, where adventure awaits in protected preserves. Relax with leisurely days at sea before exploring the remote beauty of the Pearl Islands. As you sail through the Panama Canal, marvel at the intricate locks in daylight before concluding your trip with extra time in Panama City, offering the perfect blend of nature and modern marvels.



ITINERARY

Day 1 San José (Puntarenas), Costa Rica

Departure 10:00 pm

Pura vida! Protected by the Nicoya Peninsula with its beautiful nature parks, Puntarenas is located on a narrow headland that extends into the Gulf of Nicoya. To the right and left of the pier long beaches line the coast, along which the promenade with

The Small Cruise
Ship Collection

www.small-cruise-ships.com

01432 507 280 (within UK)

info@small-cruise-ships.com | small-cruise-ships.com



The Small Cruise Ship Collection

www.small-cruise-ships.com



small-cruise-ships.com

info@small-cruise-ships.com

hotels, bars and restaurants runs. Only about 71 miles separate the popular port city on the Pacific side of Costa Rica from the capital San Jose. Worth seeing are the gold and national museum as well as the beautiful buildings like the classical national theater and the elegant and playful post and telegraph office.

Day 2 Punta Leona/Costa Rica

Arrival 8:00 am, Departure 1:30 pm

From Punta Leona, you can reach the Carara National Park, spanning over 5,000 hectares and three distinct vegetation zones. Jungle giants covered in vines, a dense canopy of leaves, and orchids showcase nature in its most pristine form. Three massive suspension bridges traverse the treetops of the jungle, providing unique insights into the wildlife and plant life.

Day 3 Quepos/Costa Rica

Arrival 6:00 am, Departure 6:00 pm

Quepos was a lively little port at the time of booming banana exports. Today it is a gateway to the Manuel Antonio National Park, which lies to the south. The park covers an area of just 2 1/2 square miles and is one of the most diverse rainforests in Costa Rica. Paths lead you from the beautiful sandy beach straight to the heart of this untamed green kingdom. More than 1,000 varieties of plant and prolific wildlife, including whole herds of inquisitive apes, sloths, coatis, raccoons, iguanas, birds, and unique colorful butterflies have made this place their

home.

Day 4, Mar 3 202 Marina Flamingo/Costa Rica

Arrival 5:00 pm, Departure 11:00 pm

Marina Flamingo emerged as an ambitious \$50 million project on the west coast of Costa Rica. This luxury yacht marina offers more than just elegant hotel villas, restaurants, and shopping options - it provides a plethora of recreational activities ranging from deep-sea fishing and diving to golf and mountain biking. While Flamingo Beach may not be home to pink flamingos, the dreamy beach in the Guanacaste province beckons with soft sand, crystal-clear waters, and lush tropical vegetation.

Day 5 Playa Panamá/Costa Rica

Arrival 6:00 am, Departure 6:00 pm

As still as a lake, the sea lies under the tropical sun: thanks to its sheltered location in a tree-lined bay, Playa Panama is considered the most relaxing and tranquil beach on the Guanacaste coast - the perfect place to unwind. The Palo Verde National Park stretches along one bank of the Rio Tempisque. It features the densest population of water fowl in the whole of Costa Rica and is one of the best areas for bird watching in Central America - almost 300 species of bird have been identified here. The best vantage point to see them is on a boat trip through the mangroves.

Day 6 Day under full sails



The Small Cruise Ship Collection

www.small-cruise-ships.com

01432 507 280 (within UK)

info@small-cruise-ships.com | small-cruise-ships.com



The Small Cruise Ship Collection

www.small-cruise-ships.com



small-cruise-ships.com

info@small-cruise-ships.com

Climbing the rigging, untying ropes, setting sails - today is all about sailing. Time to lean back and relax in the deck chair and watch the passionate crew hoisting the sails by hand.

Day 7 Puerto Jiménez/Costa Rica

Arrival 7:00 am, Departure 1:30 pm

Deep in the Pacific South of Costa Rica lies the small town of Puerto Jimenez on the diverse Osa Peninsula. As the area is almost entirely covered by pristine rainforest, it's a dream destination for nature enthusiasts, and you won't find hordes of tourists here. Life in this 1,700-resident town is tranquil: in the mid-20th century, loggers and gold prospectors briefly brought a boom to Puerto Jimenez, but calm returned thereafter. Today, visitors can fully immerse themselves in the natural beauty of the surroundings. In the Piedras Blancas Rainforest Park, the high humidity creates lush greenery - providing a home for coatis, jaguars, and vibrant tropical birds.

Day 8 Day under full sails

Enjoy fitness, massages or sun and sea with a good book in the deck chair. This day beneath full sails gives you all the options for your perfect personal wellness program.

Day 9 Pearl Islands/Panama

Arrival 2:00 pm, Departure 6:00 pm

The name of this Pacific archipelago in the Gulf of Panama pre-dates the Spanish conquest to a time when its inhabitants were pearl fishermen and traded in beautiful oyster pearls. Where in previous centuries, pirates and buccaneers hid out and buried their loot, other treasures can now be found. Over 200 pearl islands, of which even the smallest are inhabited, form an almost undisturbed paradise with a diverse range of lakes and rivers, enchanting white coral beaches, golden sandy beaches and black volcanic beaches, rounded off with lush green tropical vegetation. The island of Contadora has special significance as the place where U.S. President Jimmy Carter signed the Panama Canal Treaty in 1977, ceding sovereign rights over the Panama Canal to the Republic of Panama.

Day 10 Day sailing through the Panama Canal & Panama City (Colón), Panama

Arrival 6:00 am, Departure 6:00 pm

The idea of connecting the Atlantic and Pacific at the narrowest part of Central America had been around for many hundreds of years, but from a technical perspective this tremendous achievement only became possible much later. The French took on the project in 1881, after the successful opening of the Suez Canal in Egypt in 1869. But it would be more than 30 years before the canal was finally completed in 1914. This masterpiece of technology is just under 50 miles long, has 12 lock basins and negotiates a difference in altitude of 85 feet.



The Small Cruise Ship Collection

www.small-cruise-ships.com

01432 507 280 (within UK)

info@small-cruise-ships.com | small-cruise-ships.com



The Panama Canal is one of the world's most important waterways and most spectacular ship canals.

Arrival 07:00 pm

Since 1914, the Panama Canal has linked the Atlantic to the Pacific. This technological marvel of locks and canals also comprises two artificial lakes. The Gatunsee, one of the world's largest dammed lakes, has now regained a unique range of flora and fauna. In fact, nature has reclaimed the lake for itself, with the rainforest sprawling over its banks. The former hills are now islands on which an astonishing variety of species has formed, due to its isolation. The largest island, Barro Colorado, is completely untouched and has been a nature reserve since 1923. Scientists from all over the world come here to try and discover the jungle's last secrets.

Day 11 Panama City (Colón), Panama

Since 1914, the Panama Canal has linked the Atlantic to the Pacific. This technological marvel of locks and canals also comprises two artificial lakes. The Gatunsee, one of the world's largest dammed lakes, has now regained a unique range of flora and fauna. In fact, nature has reclaimed the lake for itself, with the rainforest sprawling over its banks. The former hills are now islands on which an astonishing variety of species has formed, due to its isolation. The largest island, Barro Colorado, is completely untouched and has been a nature reserve since 1923. Scientists from all over the world come here to try and discover the jungle's last secrets.

Please note:

Itineraries are subject to change.



The Small Cruise
Ship Collection

www.small-cruise-ships.com



small-cruise-ships.com

info@small-cruise-ships.com

YOUR SHIP: SEA CLOUD SPIRIT

YOUR SHIP:

Sea Cloud Spirit

VESSEL TYPE:

LENGTH:

PASSENGER CAPACITY:

BUILT/REFURBISHED:

Building a three-mast full-rigged ship with traditional rigging in the 21st century may seem a little unusual. For SEA CLOUD CRUISES it is a commitment to true passion for sailing. With her clear, classic line she follows the example of her elegant windjammer sisters, but goes completely new ways. An entire deck with balcony cabins, an exclusive wellness and SPA area, a fitness room with sea view, a bistro on deck as an evening alternative to "fine dining" in the restaurant - the youngest member of the SEA CLOUD family offers plenty of room for individuality in addition to genuine windjammer romance. The SEA CLOUD SPIRIT combines traditional windjammer experience with 21st century comfort with up to 136 passengers. Cabins Even more comfort: of the 69 cabins from the owner suite to the superior outside cabin, almost half have balconies or windows to open. Public areas Spacious decks, a generous wellness and SPA area, fitness with sea view and much more: on board the SEA CLOUD SPIRIT, one does not only enjoy the freedom under sails.



The Small Cruise
Ship Collection

www.small-cruise-ships.com

01432 507 280 (within UK)

info@small-cruise-ships.com | small-cruise-ships.com



The Small Cruise Ship Collection

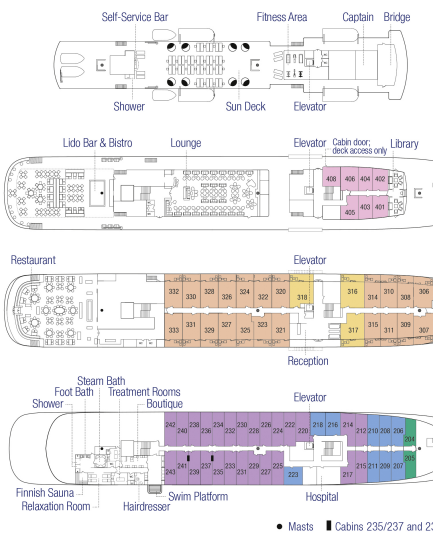
www.small-cruise-ships.com



small-cruise-ships.com

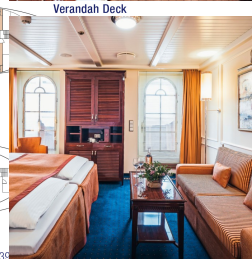
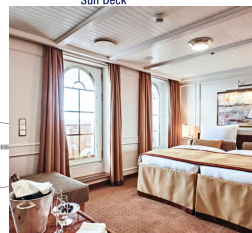
info@small-cruise-ships.com

INSIDE YOUR SHIP



Category A: Suites with balcony. From

Category B: Junior suites with balcony



Cabin Categories:

- Cat. A Suites with balcony
- Cat. B Junior suites with balcony

- Cat. C De luxe lido cabins, outside
- Cat. D De luxe cabins, outside

- Cat. E Superior cabins, outside
- Cat. F Superior single cabins, outside

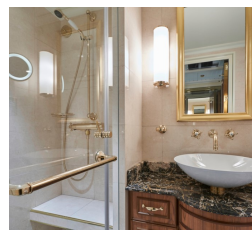
Category C: De luxe lido cabins, outside. From

Category D: De luxe cabins, outside.

Category E: Superior cabins, outside. From

Category F: Superior single cabins, outside

Guaranteed double cabins. From





The Small Cruise Ship Collection

www.small-cruise-ships.com



small-cruise-ships.com

info@small-cruise-ships.com

PRICING

18-Feb-2025 to 28-Feb-2025

Guaranteed double cabins. From	£5847 GBP pp
Category E: Superior cabins, outside. From	£6220 GBP pp
Category D: De luxe cabins, outside. From	£7050 GBP pp
Category F: Superior single cabins, outside. From	£7573 GBP pp
Category C: De luxe lido cabins, outside. From	£8030 GBP pp
Category B: Junior suites with balcony. From	£9374 GBP pp
Category A: Suites with balcony. From	£10694 GBP pp

28-Feb-2025 to 10-Mar-2025

Guaranteed double cabins. From	£5847 GBP pp
Category E: Superior cabins, outside. From	£6220 GBP pp
Category D: De luxe cabins, outside. From	£7050 GBP pp
Category F: Superior single cabins, outside. From	£7573 GBP pp
Category C: De luxe lido cabins, outside. From	£8030 GBP pp
Category B: Junior suites with balcony. From	£9374 GBP pp
Category A: Suites with balcony. From	£10694 GBP pp

17-Feb-2026 to 01-Mar-2026

Category E: Superior cabins, outside. From	£7369 GBP pp
Category D: De luxe cabins, outside. From	£8425 GBP pp
Category F: Superior single cabins, outside. From	£8985 GBP pp
Category C: De luxe lido cabins, outside. From	£9545 GBP pp
Category B: Junior suites with balcony. From	£11159 GBP pp
Category A: Suites with balcony. From	£12695 GBP pp

01-Mar-2026 to 13-Mar-2026

Category E: Superior cabins, outside. From	£7369 GBP pp
Category D: De luxe cabins, outside. From	£8425 GBP pp
Category F: Superior single cabins, outside. From	£8985 GBP pp
Category C: De luxe lido cabins, outside. From	£9545 GBP pp
Category B: Junior suites with balcony. From	£11159 GBP pp
Category A: Suites with balcony. From	£12695 GBP pp



www.small-cruise-ships.com

01432 507 280 (within UK)

info@small-cruise-ships.com | small-cruise-ships.com