

# The Small Cruise Ship Collection

www.small-cruise-ships.com

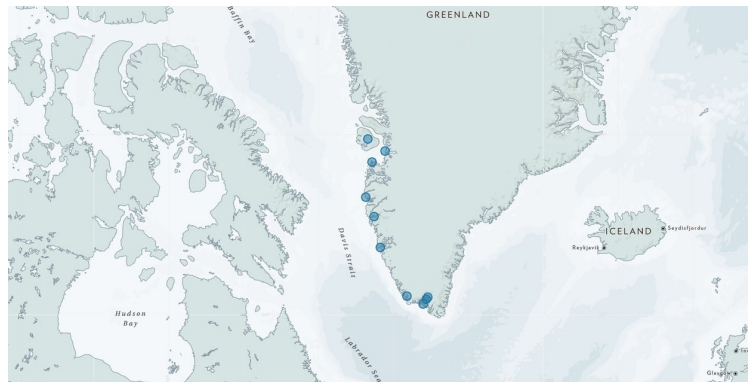


small-cruise-ships.com

info@small-cruise-ships.com

## ILULISSAT TO NARSARSUAQ - GEMS OF THE WEST COAST

Join a voyage filled with fascinating stories of ancient history, cultural legends and natural wonders! We will enjoy humpback feeding grounds, Norse history, Inuit culture and geological wonders. Our trip stretches from the ice-crowned north to the jagged mountains and green pastures of the south, resulting in a large variety of nature and culture! The ice, land and nature we sail through will be given another dimension when seen through the prism of myths, legends and history of Inuit and Norse settlers, all shaped by its harsh bounty and beauty. Travelling with a small group of merely 12 passengers gives us flexibility, unique itineraries and more time ashore. Also, the footprints we leave behind are a lot smaller! We get to visit remote settlements, meet the welcoming people living here and in a personal way learn more about their fascinating culture. The M/S Balto has a lot of experience and is designed to explore the most remote fjord systems and take you to secret anchorages. This is true micro cruising.



### ITINERARY

Day 1: Ilulissat, Greenland

We arrive independently to the town by the ice fjord, Ilulissat. As soon as we arrive, the breathtaking natural scenery captivates us, showcasing hills, glaciers, and a bay dotted with icebergs. The remoteness from our everyday life is obvious!

In the afternoon we board M/S Balto. We are now on a voyage in true expedition style and our exact route is depending on weather and ice and the itinerary must be kept flexible!

Day 2 - 11: Expedition cruising through history

We continue to explore the ice-choked Disko Bay area, before we head south. We are constantly on the lookout, since we are very likely to sail through humpback feeding grounds. We also

The Small Cruise Ship Collection

www.small-cruise-ships.com

01432 507 280 (within UK)

info@small-cruise-ships.com | small-cruise-ships.com



## The Small Cruise Ship Collection

[www.small-cruise-ships.com](http://www.small-cruise-ships.com)

[small-cruise-ships.com](http://small-cruise-ships.com)

[info@small-cruise-ships.com](mailto:info@small-cruise-ships.com)

pass the small and colourful houses of Aasiaat. As we continue via an inland passage towards Sisimiut, we sail amongst small islands, fjords and cliffs. We might pay a short visit to wander the streets, or we might opt for the surrounding wild fjords with an abundance of cod and various whale species. During hikes we might see the iconic muskox.

As we now leave the ice-filled fjords behind, only random icebergs will pass our way. We pass by Sermersuut Island and might enter the magical Kangerlussuatsiaq fjord (the fjord of eternity), where huge mountains up to 2000 metres rise straight from the ocean.

We then reach Nuuk. The capital's setting is stunning, and the bay is sometimes visited by minke and pilot whales. We pay a visit to the National Museum, Greenland's largest museum of cultural history. The collections come from all over the country, brought from various archaeological and small museum displays over recent years and the visit gives us great insight into the many different cultures of Greenland.

Our journey continues south towards the fjords around Qaqortoq. En route we hope to stop by the abandoned mining town of Ivittuut - one of the few places in the world to have discovered naturally occurring cryolite. During a hike here we have good chances of seeing muskox.

Nearby is the Ikka fjord. The legend says that the Inuit people drove invaders out onto the thin ice and when the ice gave way, the invaders died in the ice-cold water. If you look closely, you can catch a glimpse of their petrified remains on the bottom. The figures on the bottom are made of ikaite, an unusual form of

chalk or limestone that is formed under an enormous pressure. Only about five other findings of ikaite have been observed around the world.

The places we are travelling through on this voyage have many stories to tell. One is of the Inuit's great respect of and symbiotic relationship with environment and animals. During periods of weather change and animal numbers declining, amulets and fishing or hunting artefact became objects of great beauty and artistry. Of respect and love for the animals, who give themselves to sustain the Inuit life and culture, offerings are made to the Sea Goddess Sedna, to release the animals' souls. Still today, Inuit carry a small jug of fresh water when hunting seal. After a seal is killed it is given fresh water, so its spirit will not go thirsty. We will have many opportunities to learn about stories and legends, different eras and people that migrated to Greenland, conflicts and the ultimate demise of the once powerful Norse civilisation.

We reach Qaqortoq, the largest city in Southern Greenland, beautifully situated on the mountain slopes and surrounded by fjords. We venture into Eriksfjord, named after Erik the Red, a Norse explorer believed to have founded the first settlement in Greenland. During a landing we visit Brattahlid, the estate he established at the end of the 10th century. We also hope to explore the hot springs of Uunarteq and enjoy a bath in these warm-tempered natural bathtubs, with breath-taking views of mountain peaks and drifting icebergs.

Day 12: Narsarsuaq

The Small Cruise Ship Collection

[www.small-cruise-ships.com](http://www.small-cruise-ships.com)

01432 507 280 (within UK)

[info@small-cruise-ships.com](mailto:info@small-cruise-ships.com) | [small-cruise-ships.com](http://small-cruise-ships.com)



## The Small Cruise Ship Collection

[www.small-cruise-ships.com](http://www.small-cruise-ships.com)

[small-cruise-ships.com](http://small-cruise-ships.com)

[info@small-cruise-ships.com](mailto:info@small-cruise-ships.com)

At the end of Eriksfjord is Narsarsuaq, a small village with approx. 150 inhabitants. Here where we disembark, continue to the airport and begin our journey home.

Please note:

Our exact route will depend on ice, weather conditions and wildlife as well as permissions and restrictions from local authorities. The places mentioned are just examples of some of the many sites this region of Greenland has to offer. We always strive to maximize your experience. Please remember that flexibility is the key to a successful expedition!



## The Small Cruise Ship Collection

[www.small-cruise-ships.com](http://www.small-cruise-ships.com)

[small-cruise-ships.com](http://small-cruise-ships.com)

[info@small-cruise-ships.com](mailto:info@small-cruise-ships.com)

## YOUR SHIP: BALTO

**YOUR SHIP:** Balto

**VESSEL TYPE:**

**LENGTH:**

**PASSENGER CAPACITY:**

**BUILT/REFURBISHED:**

M/S Balto, named after the leading sled dog of 1925 Nome serum run. She was built for the highest ice class in Rauma, Finland, to serve as a government service vessel in the Baltic sea. During 2019-2020, she has been totally refurbished and is now one of the roomiest and most elegant small polar expedition yachts in service. M/S Balto offers a relaxed luxury accommodation for 12 guests in 7 outside cabins, all with private facilities and lower beds. The spacious cabins include 1 Owner's cabin, 1 superior cabin, 3 double cabins and 2 single cabins. The Owner's cabin is 30m<sup>2</sup>, has 6 windows and a queen bed, the superior cabin has two twin beds while the double cabins has a queen bed. The Owner's and superior cabin also offer a separate seating area. In all cabins you find a desk with a chair and a closet for storage. On the guest deck you also find a cedar lined sauna, accommodating 4-6 persons, with a cold shower and a small changing room. The richly appointed saloon and the beautiful dining messroom feature crotch-mahogany panelling, a bar, a card table, a library, coffee and tea stations. She offers a large restaurant style open galley, where you can check on the marvels of our chefs and sample freshly baked bread. There are several open and semi enclosed deck spaces

from where you can enjoy the stunning Arctic sceneries. You are welcomed by an international crew and the bridge is open for visitors. The ship has been fitted with an electric diesel propulsion capable of maintaining versatile manoeuvring and survey speeds with no vibration. It is therefore ideal as film and photo platform. There is also a mud room for expedition gear and two Zodiacs for wilderness cruises and offshore experiences. M/S Balto is truly one of a kind when it comes to small polar expedition ships. Travelling with this unique 12-passenger ship offers a completely different and much more intimate experience of Greenland compared to a larger expedition ship. A small group of merely 12 passengers gives us more flexibility, unique itineraries and more time ashore. Also, the footprints we leave behind are a lot smaller! The M/S Balto is designed to explore the most remote fjord systems, visit isolated Inuit settlements, take you to secret anchorages and maximise each guest's experience in the unspoiled wilderness. This is true

The Small Cruise Ship Collection

[www.small-cruise-ships.com](http://www.small-cruise-ships.com)

01432 507 280 (within UK)

[info@small-cruise-ships.com](mailto:info@small-cruise-ships.com) | [small-cruise-ships.com](http://small-cruise-ships.com)



The Small Cruise Ship Collection  
www.small-cruise-ships.com

small-cruise-ships.com

info@small-cruise-ships.com



micro cruising.



# The Small Cruise Ship Collection

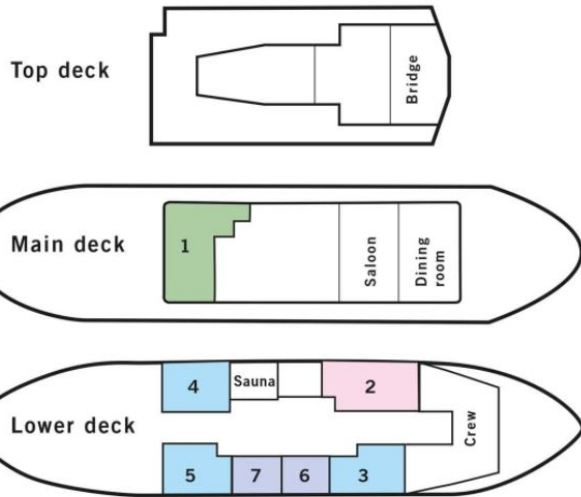
www.small-cruise-ships.com



small-cruise-ships.com

info@small-cruise-ships.com

## INSIDE YOUR SHIP



Double Cabin



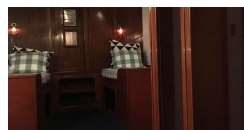
Owner's Cabin



Single Cabin



Superior Cabin





# The Small Cruise Ship Collection

[www.small-cruise-ships.com](http://www.small-cruise-ships.com)



[small-cruise-ships.com](http://small-cruise-ships.com)

[info@small-cruise-ships.com](mailto:info@small-cruise-ships.com)

## PRICING

25-Jul-2025 to 05-Aug-2025

Single Cabin	£13595 GBP pp
Owner's Cabin	£13195 GBP pp
Superior Cabin	£11755 GBP pp
Double Cabin	£11035 GBP pp