

# The Small Cruise Ship Collection

www.small-cruise-ships.com

small-cruise-ships.com

info@small-cruise-ships.com

## ICONS OF THE NORTHEASTERN SEABOARD - EAST COAST USA CRUISE

From the Big Apple's energy to New England's charm this cruise showcases the lively Northeastern seaboard. Sail to chic Martha's Vineyard and along the Cape Cod Canal before exploring artsy Provincetown, historic Boston and Portland, Maine's fishing piers. Conclude in Halifax, Nova Scotia's maritime capital, with its museums and star-shaped hilltop. From classic Americana to fresh Atlantic seafood, experience all that makes the Northeast shine.



### ITINERARY

DAY 0 PRE CRUISE

DAY 1 NEW YORK, NY

One of the world's most vibrant and exciting cities, the approach to New York City is mesmerising, as icons like the Statue of Liberty and Empire State Building come into view amid towering skyscrapers. This lively metropolis invites visitors to attend Broadway shows, appreciate masterpieces at the Met, MoMa or Guggenheim, experience the bright lights of Times Square, or enjoy leisurely strolls through Central Park and across the Brooklyn Bridge.

DAY 2 OAK BLUFF, MARTHAS VINEYARDS, MA

The Small Cruise Ship Collection

www.small-cruise-ships.com

01432 507 280 (within UK)

info@small-cruise-ships.com | small-cruise-ships.com



## The Small Cruise Ship Collection

[www.small-cruise-ships.com](http://www.small-cruise-ships.com)

[small-cruise-ships.com](http://small-cruise-ships.com)

[info@small-cruise-ships.com](mailto:info@small-cruise-ships.com)

The nostalgic charm, seafood eateries and vibrant local arts scene make Martha's Vineyard a delightful stroll through history. Colourful 19th-century gingerbread cottages surround the town of Oak Bluffs' Ocean Park, a beautiful park with a bandstand and a playground. These cottages, along with the Tabernacle at Inkwell Beach, and the 1876 Flying Horses Carousel with 48 hand-carved horses, made the town a historic summer haven.

### DAY 3 CAPE COD CANAL, MA & PROVINCETOWN, MA

Connecting Cape Cod Bay with Buzzards Bay, the Cape Cod Canal is a broad waterway stretching 17.4 miles. Opened in 1914, this scenic passage was built to shorten the journey between Boston and New York, meaning ships no longer had to navigate the windy route around the cape. Boats pass along this engineered passageway beneath 1930s steel-arch bridges like the Railroad Bridge where armoured trains once rolled.

At Cape Cod's northern tip, Provincetown commemorates the Pilgrims' 1620 Mayflower landing with the towering Pilgrim Monument and history exhibits at Provincetown Museum. Once a whaling port, it thrived as an arts haven in the late 1800s, drawing writers and artists. Today, P-town is renowned for its

galleries, theatres, vibrant nightlife, and LGBTQ+ friendly atmosphere. Nearby, Stellwagen Bank sanctuary hosts humpback, fin and minke whales.

### DAY 4 BOSTON, MA

Boston, Massachusetts played a part in the American Revolution. The 2.5-mile-long Freedom Trail links 16 historic sites, including the Paul Revere House and Bunker Hill Monument. Faneuil Hall now bustles with shops and eateries. Beacon Hill radiates 19th-century elegance with cobblestone streets, while Back Bay and Copley Square showcase Victorian brownstones. Boston's intellectual prowess is evident with institutions like Harvard and MIT.

### DAY 5 PORTLAND, ME

The coastal city of Portland, Maine, is celebrated for fresh lobster, crab and other seafood. The Old Port district features cobblestone streets, historic brick buildings and a thriving arts scene, including the Portland Museum of Art. Portland's craft breweries draw beer enthusiasts. The city features parks like Deering Oaks and the Portland Japanese Garden, while the Eastern Promenade offers scenic views of Casco Bay and the skyline.

### DAY 6 YARMOUTH, NS

The Small Cruise Ship Collection

[www.small-cruise-ships.com](http://www.small-cruise-ships.com)

01432 507 280 (within UK)

[info@small-cruise-ships.com](mailto:info@small-cruise-ships.com) | [small-cruise-ships.com](http://small-cruise-ships.com)



Founded in 1761 by New England settlers, Yarmouth, Nova Scotia, encapsulates the maritime charm of Canada's Atlantic provinces. Nestled along the Bay of Fundy, it's known for rugged shorelines, sandy beaches and historic lighthouses such as Cape Forchu Lighthouse with views of the surrounding coastline. Yarmouth's rich seafaring heritage is evident in the Yarmouth County Museum.

DAY 7 HALIFAX, NS

Founded as a naval base in 1749, Halifax's seafaring history is well-grounded with the Canadian Museum of Immigration, where one million Europeans landed up until 1971, and the Noon Gun that has fired from the Citadel fortress since 1857. When the Titanic struck the iceberg at 11:40 pm, April 14, 1912, ships set sail from here. Many victims are buried at Fairview Lawn Cemetery, while the Maritime Museum of the Atlantic displays rescued artefacts.

Please note:

Itineraries are subject to change.



## The Small Cruise Ship Collection

[www.small-cruise-ships.com](http://www.small-cruise-ships.com)

[small-cruise-ships.com](http://small-cruise-ships.com)

[info@small-cruise-ships.com](mailto:info@small-cruise-ships.com)

## YOUR SHIP: VEGA

**YOUR SHIP:** Vega

**VESSEL TYPE:**

**LENGTH:**

**PASSENGER CAPACITY:**

**BUILT/REFURBISHED:**

Launched in 2022, this state of the art ship has been designed to journey to off the beaten path destinations and remote polar regions in style and comfort. The ship incorporates a PC5 ice-strengthened hull combined with extra-large stabilisers to make your journey as smooth as possible. Sophisticated Elegance. We know how important outdoor space is, so our spacious, relaxing public spaces provide wide open, unobstructed views throughout the ship. The destination will always be in view. Your Wellbeing. The safety & happiness of our guests is paramount to our 120-strong crew on board as well as our passionate expedition team who'll be serving up thrilling shore excursions and lasting memories. Cabin Types. Our 76 cabins including 6 suites have all the amenities you will need to feel comfortable including dressing gowns, hairdryers, personal safes and minibars. Our stylish cabins all have desks, a dressing area and comfy seating. En suite bathrooms all feature glass-enclosed rain showers. Wheelchair access Guests who use wheelchairs must bring their own, as we have only a small number of wheelchairs stored onboard for emergencies. To ensure ease of movement on the ship, wheelchairs and mobility aids must be no wider than 65cm. All mobility or medical

equipment brought on board must be capable of being carried safely and must be declared before sailing. To ensure that all guests can safely evacuate during an emergency, guests requiring a wheelchair can only be accommodated in our ADA-accessible cabins. We offer an Oceanview stateroom on Vega which is specifically designed to be completely ADA compliant and have a fully operable wheelchair-access wet unit. Vega has two lifts, serving every passenger deck apart from the Stargazing top deck, which is, therefore, more difficult to access, as are the Aft Marina and Swan's Nest forward observation platform. Also, we don't have special equipment to access the swimming pool, jacuzzi, or sauna. Otherwise, the ship is entirely at your disposal. Many of the expeditions ashore in remote places are by Zodiac. Boarding these boats and returning aboard can present challenges for wheelchair users, as can navigating uneven terrain. These challenges are by no means always insurmountable, though, and our highly experienced crew is trained to provide reliable advice and assistance. They will make every effort to ensure wheelchair-using guests enjoy a memorable experience at each destination. Our general guidance, however, is to recommend wheelchair users travel with a companion for their ease and enjoyment. If you prefer to remain aboard, our panoramic interiors and ample open decks ensure an immersive, intimate experience of your inspiring

The Small Cruise Ship Collection  
[www.small-cruise-ships.com](http://www.small-cruise-ships.com)

01432 507 280 (within UK)

[info@small-cruise-ships.com](mailto:info@small-cruise-ships.com) | [small-cruise-ships.com](http://small-cruise-ships.com)



# The Small Cruise Ship Collection

[www.small-cruise-ships.com](http://www.small-cruise-ships.com)



[small-cruise-ships.com](http://small-cruise-ships.com)

[info@small-cruise-ships.com](mailto:info@small-cruise-ships.com)



surroundings.



The Small Cruise Ship Collection

[www.small-cruise-ships.com](http://www.small-cruise-ships.com)

**01432 507 280** (within UK)

[info@small-cruise-ships.com](mailto:info@small-cruise-ships.com) | [small-cruise-ships.com](http://small-cruise-ships.com)

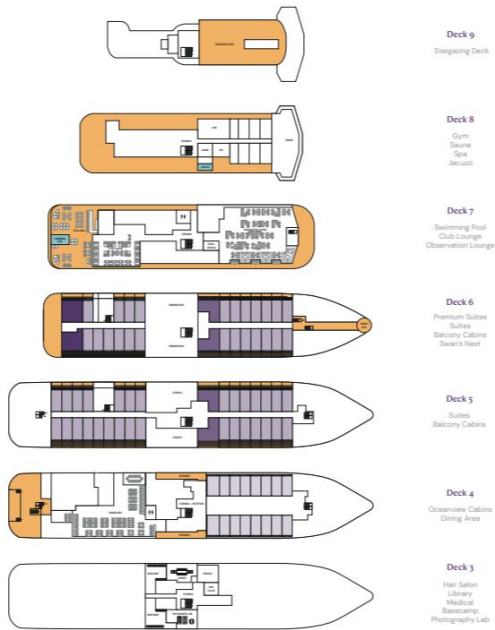
# The Small Cruise Ship Collection

www.small-cruise-ships.com

small-cruise-ships.com

info@small-cruise-ships.com

## INSIDE YOUR SHIP



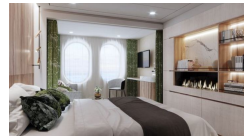
Balcony D5



Balcony M5



Oceanview D4



Oceanview M4



Premium Suite



Suite





# The Small Cruise Ship Collection

[www.small-cruise-ships.com](http://www.small-cruise-ships.com)



[small-cruise-ships.com](http://small-cruise-ships.com)

[info@small-cruise-ships.com](mailto:info@small-cruise-ships.com)

## PRICING

15-May-2025 to 22-May-2025

Balcony M5	£3967 GBP pp
Oceanview M4	£3050 GBP pp
Premium Suite	£5803 GBP pp
Balcony D5	£3763 GBP pp
Suite	£5294 GBP pp
Oceanview D4	£2896 GBP pp