



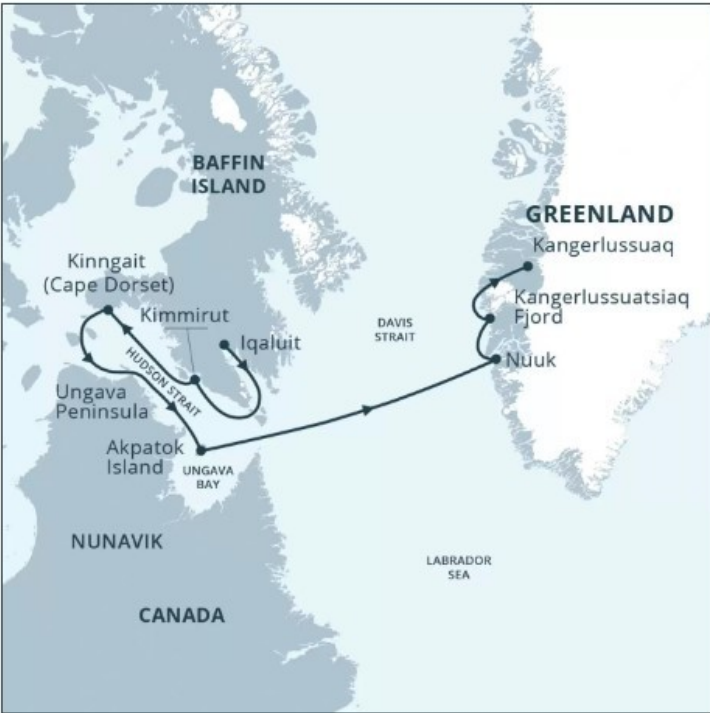
The Small Cruise Ship Collection
www.small-cruise-ships.com

small-cruise-ships.com info@small-cruise-ships.com

HEART OF THE ARCTIC - CANADA & GREENLAND EXPEDITION

Meet local artists and buy one-of-a-kind artworks in the Canadian Arctic and Greenland Tour the co-ops and workshops where brilliant prints, vibrant tapestries, and stunning carvings are made. Meet the artists and deepen your appreciation for the art of the Arctic! Inuit art is famed throughout the world—an expression of a creative culture that is both ancient and contemporary. Spot polar bears, whales, and seabirds in pristine Arctic environments Seek out the amazing creatures that call this rich region home and revel in the scenery as you go—from the ship, by Zodiac, or on hiking excursions. Admire the bounty and beauty of the fjords of Greenland, the coast of Baffin Island, the tides of Hudson Strait, and awe-inspiring Ungava Bay. Visit Nuuk, Greenland’s intriguing capital Take your time to wander the city of Nuuk, which offers a fascinating glimpse into Greenland’s history—and future. Enjoy the bustle of activity at the art galleries, cafés, and restaurants that possess a strong Scandinavian influence in their design, architecture, and flavours. Look a little closer and you will see modern Inuit artworks and historic buildings from the whaling era dotting the streets, too. Be sure to visit the excellent museum, offering a deep dive into the fascinating history and culture of Greenland. Appreciate Inuit life and culture in three Arctic regions Visit three distinct regions of the Arctic to appreciate the diversity and interconnectedness of Inuit life. In Nunavut, admire how the art reveals the unique creative spirit of Inuit culture. In Nunavik, listen to the languages of Inuktitut, French, and English that can be heard among the hamlets of Ungava Bay. And in Greenland, note how the architecture reveals a distinct Scandinavian flair. Learn from local experts Travel in the company of local

knowledge-keepers and recognized experts to truly appreciate the depth of what the Arctic offers. From geology to botany, archaeology to art, and climate change to language and heritage, you’ll learn as you go, deepening your understanding day by day—and having fun in



the process!

ITINERARY

Day 1: Iqaluit, NU, Canada



The Small Cruise Ship Collection

www.small-cruise-ships.com

small-cruise-ships.com

info@small-cruise-ships.com

Begin Your Adventure After your charter flight from Ottawa, ON, transfer to the Ocean Endeavour by Zodiac through Iqaluit harbour. Iqaluit, at the head of Frobisher Bay, is Nunavut's capital. A population of nearly 8,000 calls the city home. Local attractions include the territorial Legislature, igloo-inspired St. Jude's Cathedral, art shops, and more.

Day 2: Frobisher Bay

Witness Wildlife, Geology, and Ice Sail through this beautiful bay named for bygone explorer Martin Frobisher and stay on the lookout for wildlife. Our geologists will have you raving about rocks! Expect compelling scenery and soak up the Arctic splendour.

Day 3: Kimmirut (Lake Harbour)

Experience Inuit Culture Try your hand at athletic feats during an interactive cultural performance of Inuit games. If you're a hiker, you'll enjoy walking through Kimmirut's blooming tundra on the Itijjagiq Trail, part of the Trans Canada Trail. The community's name means "the heel" in Inuktitut, referring to an outcrop of marble across the bay, but you may also know this hamlet as Lake Harbour, home to one of the first Hudson's Bay Company outposts on Baffin Island.

Day 4: Kinngait (Cape Dorset)

Visit World-Famous Art Studios Meet the artists and visit the studios that make Kinngait proud—plus, have the opportunity to purchase one-of-a-kind pieces of art! Have a chance to talk with the old and new generations of outstanding artists, carvers, and printmakers who continue to make Kinngait a proud centre for fine art. Kinngait was ground zero for the Inuit art market when, in 1959, the West Baffin Eskimo Co-operative was established—the oldest professional Inuit printmaking studio in

Canada.

Day 5: Hudson Strait

Seek Whales, Seabirds, and Polar Bears Join the expedition team out on deck while navigating the icy, fast-moving waters of Hudson Strait. Search for breathtaking Arctic wildlife—polar bears, walrus, whales, seals, and seabirds—to capture the perfect photograph.

Day 6-7: Ungava Peninsula, QC

Hike the Tundra Explore an area of treeless tundra along the Ungava Peninsula of Nunavik, rich in geology, fauna, and flora. Enjoy great hiking and a Zodiac cruise with our expedition team, who give expert interpretation all along the way.

Day 8-9: Ungava Bay

Enjoy Fantastic Birdwatching Pay a visit to uninhabited Akpatok Island, the biggest island in Ungava Bay at over nine hundred square kilometres. It's named for the akpait (thick-billed murres) that nest on ledges of the lofty cliffs and is home to Canada's largest colony of breeding pairs. Take a Zodiac cruise to scout the shorelines and any outlying ice, keeping your eyes peeled for polar bears, walrus, and other marine life. Large and shallow, Ungava Bay is a rich ecosystem and home to a variety of wildlife, including an endangered beluga population.

Day 10: At Sea – Davis Strait

Learn Onboard Deepen your understanding of the Arctic as we travel across the Davis Strait towards Greenland. Enjoy workshops and presentations, watch a documentary, and get out on deck! Keep your binoculars ready for minke and humpback whales, as well as the seabirds that are sure to accompany our ship.

The Small Cruise Ship Collection
www.small-cruise-ships.com

01432 507 280 (within UK)

info@small-cruise-ships.com | small-cruise-ships.com



Day 11: Nuuk, Greenland

Visit Museums, Shops, and Cafés Stop in at vibrant Nuuk, the capital of Greenland. Visit the Greenland National Museum, one of the city's many outstanding features, where the world-famous Qilakitsoq mummies rest. The old harbour includes many buildings dating from Danish colonial days, while contemporary Nuuk is known for art, shopping, pubs, and cafés.

Day 12: Kangerlussuatsiaq Fjord

Take a Zodiac Cruise at the Foot of a Glacier See why Kangerlussuatsiaq lives up to its Danish name, Evighedsfjorden, which means “the fjord of eternity.” Marvel at this complex coastal waterway that includes calving glaciers, sheer bird cliffs, and streams cascading against a towering mountain backdrop. Explore this sublime glacial landscape by ship and by Zodiac. The waters here are relatively warm, due to the West Greenland Current and the subarctic location.

Day 13: Kangerlussuaq, Greenland

Cross the Arctic Circle Complete your journey overnight up Kangerlussuaq Fjord (Søndre Strømfjord), a 190-kilometre-long fjord surrounded by mountains and glaciers, and cross the Arctic Circle on your way. Kangerlussuaq, the settlement at the head of the fjord, is a former US Air Force base and Greenland's primary flight hub. Transfer by Zodiac to shore, then travel to the airport by bus for your charter flight to Toronto, ON.

Please Note:

Itineraries are subject to change.

The Small Cruise Ship Collection

www.small-cruise-ships.com



small-cruise-ships.com

info@small-cruise-ships.com

YOUR SHIP: OCEAN ENDEAVOUR

YOUR SHIP:

Ocean Endeavour

VESSEL TYPE:

LENGTH:

PASSENGER CAPACITY:

BUILT/REFURBISHED:

Sailing with a maximum of 198-passengers, Ocean Endeavour is the perfect vessel for expedition cruising. Outfitted with twenty Zodiacs, advanced navigation equipment, multiple lounges and a top deck observation room, she is purpose-built for passenger experiences in remote environments. The Ocean Endeavour boasts a 1B ice class, enabling her to freely explore throughout the Arctic summer. Launched in 1982, she has had numerous upgrades, most recently in 2010 and 2014. At 137 meters (450ft) in length, Ocean Endeavour has plenty of interior and exterior space. Enjoy multiple decks offering comfortable lounge chairs, outdoor dining, a swimming pool, sauna and even a hot tub! The spacious interiors allow for multiple workshops and presentations to occur simultaneously. Community is at the heart of Adventure Canada's expedition experience. We gather together to learn, enjoy a drink, sing a song or share a yarn - connecting with one and other. The three lounges aboard Ocean Endeavour are fantastic public spaces for seminars, events and dialogue. The Ocean Endeavour's private spaces are stylish and comfortable. All cabins have private washroom facilities, a phone for internal calls, radio, TV and air-conditioning. There are a variety of cabin categories available ranging from 9-30 m2

(100-320 sq ft). Ocean Endeavour's crew is experienced, and friendly. Her shallow draft and maneuverability allow her to access isolated fiords, bays and secluded communities. The stylish vessel is at home among the glorious settings we seek. Enjoy the class and comfort of a boutique hotel, while venturing to some of the world's last great frontiers aboard the Ocean



Endeavour!

The Small Cruise Ship Collection

www.small-cruise-ships.com

01432 507 280 (within UK)

info@small-cruise-ships.com | small-cruise-ships.com

The Small Cruise Ship Collection

www.small-cruise-ships.com

small-cruise-ships.com

info@small-cruise-ships.com

INSIDE YOUR SHIP

CABIN CATEGORIES

CATEGORY 10 | SUITE
Deck seven forward-facing picture windows, unobstructed view; matrimonial bed, private bath with full tub, refrigerator – approx. 310 sq. ft.

CATEGORY 9 | JUNIOR SUITE
Deck five (picture windows, unobstructed view; matrimonial bed, sitting area – approx. 270 sq. ft.), deck seven forward-facing picture windows, unobstructed; matrimonial bed, private bath with full tub, sitting area – approx. 290 sq. ft.) private bath, refrigerator

CATEGORY 8 | SUPERIOR TWIN
Deck five (two picture windows, unobstructed view; two lower berths, sitting area – approx. 270 sq. ft.), deck seven forward-facing picture windows, unobstructed; matrimonial bed, private bath with full tub – approx. 180 sq. ft.), deck seven midship (picture windows, partial obstruction; matrimonial bed – approx. 190 sq. ft.) private bath, refrigerator

CATEGORY 7 | SELECT TWIN
Deck five (picture windows, unobstructed view, two lower berths OR matrimonial bed, approx. 190 sq. ft.) and deck eight (overview windows, partial obstruction; matrimonial bed – approx. 140 sq. ft.) private bath, refrigerator

CATEGORY 6 | COMFORT TWIN
Deck four (two porthole windows, unobstructed view; two lower berths OR matrimonial bed – approx. 175 sq. ft.), deck seven (picture window, partial obstruction; two lower berths – approx. 135 sq. ft.) and deck eight (picture windows, unobstructed view; matrimonial bed – approx. 160 sq. ft.) private bath, refrigerator

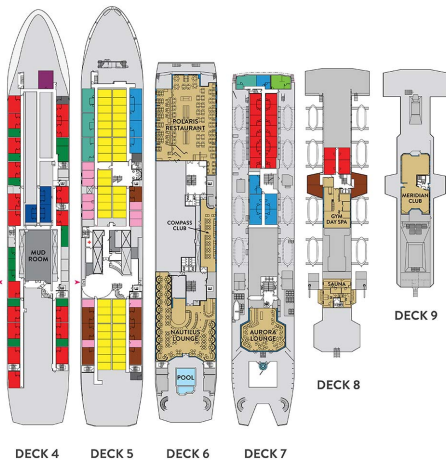
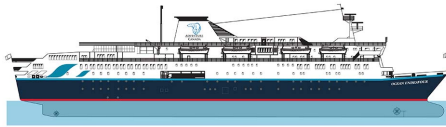
CATEGORY 5 | MAIN TWIN
Deck five (picture window, unobstructed view; two lower berths, private bath – approx. 115 sq. ft.)

CATEGORY 4 | EXTERIOR TWIN
Deck four (porthole window, unobstructed view; two lower berths, private bath – approx. 100 sq. ft. (Twin) / 90 sq. ft. (Single))

CATEGORY 3 | INTERIOR TWIN
Deck five (interior cabin, two lower berths, private bath – approx. 125 sq. ft. (Twin) / 110 sq. ft. (Single))

CATEGORY 2 | TRIPLE
Deck four (interior cabin, three lower berths, two private baths – approx. 200 sq. ft.)

CATEGORY 1 | QUAD
Deck four (interior cabin, four lower berths, private bath (separate shower room and powder room) – approx. 240 sq. ft.)



Cabin Category 1



Cabin Category 10



Cabin Category 2



Cabin Category 3



Cabin Category 4

Cabin Category 6

Cabin Category 8

Cabin Category 5

Cabin Category 7

Cabin Category 9



The Small Cruise Ship Collection

www.small-cruise-ships.com



small-cruise-ships.com

info@small-cruise-ships.com

PRICING

24-Jul-2025 to 05-Aug-2025

Cabin Category 6	£8851 GBP pp
Cabin Category 4	£7773 GBP pp
Cabin Category 3	£6772 GBP pp
Cabin Category 2	£5771 GBP pp
Cabin Category 7	£9467 GBP pp
Cabin Category 9	£10622 GBP pp
Cabin Category 5	£8312 GBP pp
Cabin Category 1	£5001 GBP pp
Cabin Category 8	£9852 GBP pp
Cabin Category 10	£11392 GBP pp