

## The Small Cruise Ship Collection

www.small-cruise-ships.com

small-cruise-ships.com

info@small-cruise-ships.com

### GLACIER BAY NATIONAL PARK ADVENTURE CRUISE ABOARD WILDERNESS DISCOVERER

Two days in Glacier Bay National Park offer an up close look at glaciers, old-growth forests, and sea life. Take in the history of Haines and diverse birding on South Marble Island. With over 20 years of exploring Alaska, nobody knows it better. Our captains and crew navigate its waterways and inlets as easily as walking the halls of their own vessel—and are always on the lookout. Spot a bear foraging for salmon on the shore and the captain swings back around so you can get a better look. There's nowhere better to be than right here.



#### ITINERARY

##### DAY 1 Juneau Embarkation

Arriving in Juneau, you will be transferred from the airport to our hospitality area. Upon boarding, your crew greets you with champagne and smiles. Set sail for a week of scenic channels and secluded wilderness. (D)

##### DAY 2 Icy Strait & Neka Bay

Kick start the morning with on-deck yoga stretches and a strong cup of coffee. Energized and snug in your kayak, glide around in remote bays off of Icy Strait through giant bullwhip kelp that can grow to over 100 feet long. Join the gang in a skiff to a rocky outcropping to watch sea lions play. Or, step into mud boots for a forest hike with your top-notch, naturalist guides who have

The Small Cruise Ship Collection

www.small-cruise-ships.com

01432 507 280 (within UK)

info@small-cruise-ships.com | small-cruise-ships.com



## The Small Cruise Ship Collection

[www.small-cruise-ships.com](http://www.small-cruise-ships.com)

[small-cruise-ships.com](http://small-cruise-ships.com)

[info@small-cruise-ships.com](mailto:info@small-cruise-ships.com)

plenty to share about everything Alaska—marine biology, plants, and even geology. On board, soak it all in as you soak in the hot tub. (BLD)

### DAY 3 Glacier Bay National Park

This crown jewel of America's national parks covers 3.3 million acres (that's a tad smaller than the state of Connecticut). Let that sink in. Most visitors see the same sliver of the park as everyone else. Not you. You're going the furthest and exploring parts that 99% of visitors never go to. And you have two days to do it. Get started! Taylor Bay sea stacks and rocky shores make for good adventure. Or hike the outwash field of glaciers winding down the Fairweather Mountain Range. The cool breeze off the nearby snow and icefields is energizing. If you motor over to Dundas Bay, keep your eye out for bears, humpbacks, and if you're lucky, a wolf sighting. Kayak the bay. Bushwhack into the forest. Discover Glacier Bay. (BLD)

### DAY 4 Glacier Bay National Park Continued

Your camera's memory card needs plenty of room. South Marble Island is abuzz with activity. Rare sea birds, black oystercatchers, and orange-beaked tufted puffins can't be missed. A colony of raucous sea lions adds to the hubbub. They add a distinct aroma to the air, too. Tucking into silent Tidal Inlet—the stomping grounds for bears, wolves, mountain goats, eagles—the backdrop is spectacular. At the end of the western-most arm of the bay sits Margerie and Grand Pacific Glaciers. And possible views of glacial calving. Take it all in on deck. (BLD)

### DAY 5 Chichagof Island

Enjoy the top deck for a sunrise or morning stretch. Meander through glacier-carved fjords along the Chichagof coast. Then

anchor. It's a prime time to lower the kayaks and skiffs. Camera in hand, set off on land and sea explorations. Closer inspection by skiff, moss-dripping trees run right down to the water. Any bears in there? With one of the world's largest populations of bears, it's possible. Go searching for giant trees and tidal pools. Hiking in the Tongass, it won't take long to find them. Your eagle-eyed guides lead the pack—and pull up the rear. (BLD)

### DAY 6 Frederick Sound

Hang out and enjoy the show. You may find yourself in 'whale soup' surrounded by feeding humpbacks swimming these abundant glacial waters. Based on wind and weather, your expedition team has the lineup of adventures all mapped out. Cruise past Five Fingers Lighthouse, Alaska's oldest light station and The Brothers Islands, where sea lions nap on rocky nobs. Paddle into the deeps of Port Houghton or Windham Bay or head ashore for a hike. Somewhere nearby, carrot-billed black oystercatchers are saying hello. Tonight, toast another big day in Alaska. (BLD)

### DAY 7 Tracy Arm & Sawyer Glaciers

Take an early peek out your window. Fjord cliffs reach skyward. Floating ice. And deep u-shaped valleys. There's no abracadabra here. Mother Nature's magic is real. Cruise past harbor seals and their pups lounging on chunks of ice. In classic fjord form, Tracy Arm delivers with the cotton candy blue Twin Sawyers glacier of its furthest reaches. Tides permitting, your skiff driver knows the ropes and guides you along. It's a mashup of towering walls, temperamental currents, and the Coastal Mountains. So many waterfalls. Mountain goats show off fancy foot work on the cliffs, so keep your eyes open. Finish your week with Captain's dinner and post-dinner cocktails watching the week's "photo journal" by your crew. (BLD)

The Small Cruise Ship Collection  
[www.small-cruise-ships.com](http://www.small-cruise-ships.com)

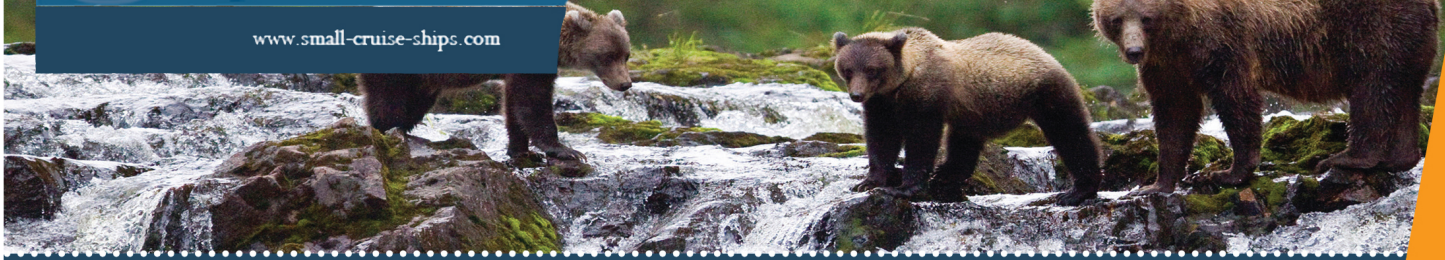
01432 507 280 (within UK)

[info@small-cruise-ships.com](mailto:info@small-cruise-ships.com) | [small-cruise-ships.com](http://small-cruise-ships.com)



## The Small Cruise Ship Collection

[www.small-cruise-ships.com](http://www.small-cruise-ships.com)



[small-cruise-ships.com](http://small-cruise-ships.com)

[info@small-cruise-ships.com](mailto:info@small-cruise-ships.com)

### DAY 8 Juneau Disembarkation

Linger over breakfast this morning cruising into Juneau. Wish your crew and new friends goodbye. Then it's off to the airport or begin your UnCruise hotel stay or land tour. (B)

### Please Note:

Itineraries are guidelines; variations in itinerary and the order of days may occur to maximize your experience.



The Small Cruise  
Ship Collection

[www.small-cruise-ships.com](http://www.small-cruise-ships.com)

**01432 507 280** (within UK)

[info@small-cruise-ships.com](mailto:info@small-cruise-ships.com) | [small-cruise-ships.com](http://small-cruise-ships.com)



The Small Cruise  
Ship Collection

[www.small-cruise-ships.com](http://www.small-cruise-ships.com)

[small-cruise-ships.com](http://small-cruise-ships.com)

[info@small-cruise-ships.com](mailto:info@small-cruise-ships.com)

## YOUR SHIP: WILDERNESS DISCOVERER

**YOUR SHIP:**

**Wilderness Discoverer**

**VESSEL TYPE:**

**LENGTH:**

**PASSENGER CAPACITY:**

**BUILT/REFURBISHED:**

The 76-guest Wilderness Discoverer gets rave reviews from her guests. Expedition is top-of-mind with this vessel; and adventure and discovery lay at its heart. The interior complements the outside and public and private spaces are loaded with amenities. Enjoy a main lounge that evokes the feel of a National Park Lodge or neighborhood pub and relax on deck or keep watch for wildlife. Three accessible decks are fully equipped for comfort and action. The sun deck has a sauna and fitness equipment; viewing is over-the-top from the bow and under-the-stars from two hot tubs on the observation deck; and the EZ Dock launch platform on the main deck makes getting in the water a cinch. Onboard are kayaks; stand-up paddle boards; inflatable skiffs; hiking poles; yoga mats; hydrophone for listening below-surface; and a bow-mounted underwater camera pipes the action to the lounge and to your cabin TV. The four cabin categories aboard the Wilderness Discoverer are: Navigator; Trailblazer; Pathfinder; and Explorer. Depending on your cabin, singles, doubles or triples can be accommodated. Common to all Wilderness Discoverer cabins are: Memory foam mattresses; Flat-screen TV/DVD; and iPod docking station. All staterooms come with a view window (no portholes).



The Small Cruise  
Ship Collection

[www.small-cruise-ships.com](http://www.small-cruise-ships.com)

**01432 507 280** (within UK)

[info@small-cruise-ships.com](mailto:info@small-cruise-ships.com) | [small-cruise-ships.com](http://small-cruise-ships.com)

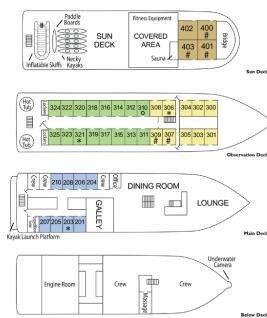
# The Small Cruise Ship Collection

www.small-cruise-ships.com

small-cruise-ships.com

info@small-cruise-ships.com

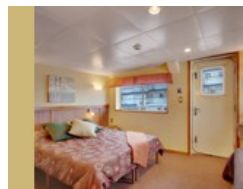
## INSIDE YOUR SHIP



All Cabins are Above Deck with View Windows  
 \* Double or Triple Accommodation \* Single or Double Accommodation \* Fixed Bath

- Explorer Cabin (EXPL)**  
 43-421  
 Single stateroom or twin beds, large picture window, private bath with shower.
- Pathfinder Cabin (PATH)**  
 306-308  
 Double stateroom, double bed or double bed with bunk beds, view window, private bath with shower.
- Trailblazer Cabin (TRBL)**  
 310-323  
 Queen or twin beds, view window, private bath with shower.
- Navigator Cabin (NAVY)**  
 301-305, 309-310  
 Queen or twin beds, view window, private bath with shower.

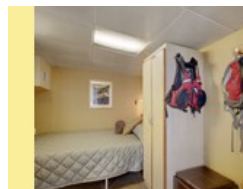
Admiral Cabin



Navigator Cabin



Pathfinder Cabin



Single





# The Small Cruise Ship Collection

www.small-cruise-ships.com



small-cruise-ships.com

info@small-cruise-ships.com

## PRICING

### 07-Apr-2025 to 14-Apr-2025

Trailblazer Cabin	£3619 GBP pp
Navigator Cabin	£3311 GBP pp
Single	£5852 GBP pp
Admiral Cabin	£4235 GBP pp
Pathfinder Cabin	£3927 GBP pp

### 25-May-2025 to 01-Jun-2025

Pathfinder Cabin	£4620 GBP pp
Trailblazer Cabin	£4235 GBP pp
Navigator Cabin	£3773 GBP pp
Single	£6622 GBP pp
Admiral Cabin	£5621 GBP pp

### 04-May-2025 to 11-May-2025

Trailblazer Cabin	£3773 GBP pp
Navigator Cabin	£3388 GBP pp
Pathfinder Cabin	£4081 GBP pp
Single	£5929 GBP pp
Admiral Cabin	£5005 GBP pp

### 01-Jun-2025 to 08-Jun-2025

Single	£6622 GBP pp
Trailblazer Cabin	£4235 GBP pp
Admiral Cabin	£5621 GBP pp
Pathfinder Cabin	£4620 GBP pp
Navigator Cabin	£3773 GBP pp

### 11-May-2025 to 18-May-2025

Pathfinder Cabin	£4620 GBP pp
Trailblazer Cabin	£4235 GBP pp
Single	£6622 GBP pp
Admiral Cabin	£5621 GBP pp
Navigator Cabin	£3773 GBP pp

### 08-Jun-2025 to 15-Jun-2025

Admiral Cabin	£6622 GBP pp
Pathfinder Cabin	£5467 GBP pp
Single	£7854 GBP pp
Trailblazer Cabin	£5005 GBP pp
Navigator Cabin	£4466 GBP pp

### 18-May-2025 to 25-May-2025

Single	£6622 GBP pp
Admiral Cabin	£5621 GBP pp
Pathfinder Cabin	£4620 GBP pp
Navigator Cabin	£3773 GBP pp
Trailblazer Cabin	£4235 GBP pp



01432 507 280 (within UK)

info@small-cruise-ships.com | small-cruise-ships.com



# The Small Cruise Ship Collection

www.small-cruise-ships.com



small-cruise-ships.com

info@small-cruise-ships.com

## PRICING

### 15-Jun-2025 to 22-Jun-2025

Pathfinder Cabin	£5467 GBP pp
Single	£7854 GBP pp
Navigator Cabin	£4466 GBP pp
Admiral Cabin	£6622 GBP pp
Trailblazer Cabin	£5005 GBP pp

### 13-Jul-2025 to 20-Jul-2025

Admiral Cabin	£6622 GBP pp
Pathfinder Cabin	£5467 GBP pp
Single	£7854 GBP pp
Navigator Cabin	£4466 GBP pp
Trailblazer Cabin	£5005 GBP pp

### 22-Jun-2025 to 29-Jun-2025

Single	£7854 GBP pp
Admiral Cabin	£6622 GBP pp
Navigator Cabin	£4466 GBP pp
Trailblazer Cabin	£5005 GBP pp
Pathfinder Cabin	£5467 GBP pp

### 20-Jul-2025 to 27-Jul-2025

Navigator Cabin	£4466 GBP pp
Trailblazer Cabin	£5005 GBP pp
Admiral Cabin	£6622 GBP pp
Single	£7854 GBP pp
Pathfinder Cabin	£5467 GBP pp

### 29-Jun-2025 to 06-Jul-2025

Trailblazer Cabin	£5005 GBP pp
Admiral Cabin	£6622 GBP pp
Navigator Cabin	£4466 GBP pp
Single	£7854 GBP pp
Pathfinder Cabin	£5467 GBP pp

### 27-Jul-2025 to 03-Aug-2025

Single	£7854 GBP pp
Admiral Cabin	£6622 GBP pp
Navigator Cabin	£4466 GBP pp
Pathfinder Cabin	£5467 GBP pp
Trailblazer Cabin	£5005 GBP pp

### 06-Jul-2025 to 13-Jul-2025

Pathfinder Cabin	£5467 GBP pp
Single	£7854 GBP pp
Navigator Cabin	£4466 GBP pp
Admiral Cabin	£6622 GBP pp
Trailblazer Cabin	£5005 GBP pp



# The Small Cruise Ship Collection

www.small-cruise-ships.com



small-cruise-ships.com

info@small-cruise-ships.com

## PRICING

### 03-Aug-2025 to 10-Aug-2025

Admiral Cabin	£6622 GBP pp
Pathfinder Cabin	£5467 GBP pp
Navigator Cabin	£4466 GBP pp
Single	£7854 GBP pp
Trailblazer Cabin	£5005 GBP pp

### 31-Aug-2025 to 07-Sep-2025

Pathfinder Cabin	£4620 GBP pp
Trailblazer Cabin	£4235 GBP pp
Navigator Cabin	£3773 GBP pp
Single	£6622 GBP pp
Admiral Cabin	£5621 GBP pp

### 10-Aug-2025 to 17-Aug-2025

Trailblazer Cabin	£5005 GBP pp
Navigator Cabin	£4466 GBP pp
Single	£7854 GBP pp
Admiral Cabin	£6622 GBP pp
Pathfinder Cabin	£5467 GBP pp

### 07-Sep-2025 to 14-Sep-2025

Pathfinder Cabin	£4081 GBP pp
Single	£5929 GBP pp
Navigator Cabin	£3388 GBP pp
Admiral Cabin	£5005 GBP pp
Trailblazer Cabin	£3773 GBP pp

### 17-Aug-2025 to 24-Aug-2025

Navigator Cabin	£4466 GBP pp
Pathfinder Cabin	£5467 GBP pp
Single	£7854 GBP pp
Admiral Cabin	£6622 GBP pp
Trailblazer Cabin	£5005 GBP pp

### ADDITIONAL CHARGES:

Port charges. From 375 USD pp

### 24-Aug-2025 to 31-Aug-2025

Pathfinder Cabin	£5467 GBP pp
Admiral Cabin	£6622 GBP pp
Trailblazer Cabin	£5005 GBP pp
Navigator Cabin	£4466 GBP pp
Single	£7854 GBP pp



01432 507 280 (within UK)

info@small-cruise-ships.com | small-cruise-ships.com