

The Small Cruise Ship Collection

www.small-cruise-ships.com

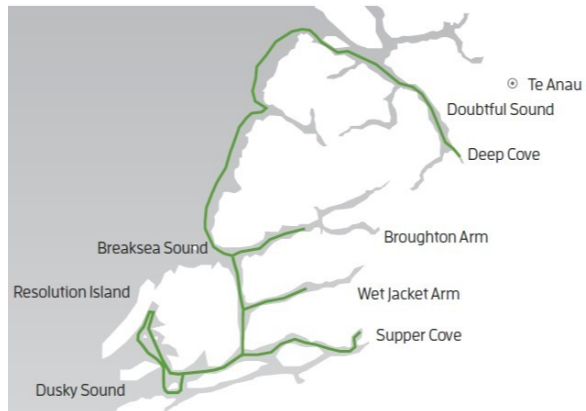
small-cruise-ships.com

info@small-cruise-ships.com

FIORDLAND EXPLORED: CRUISING FIORDLAND'S ICONIC DOUBTFUL & DUSKY SOUNDS

Discover the primordial majesty of Fiordland's iconic Doubtful and Dusky Sounds on an unforgettable 5-day exploration with Heritage Expeditions, pioneers in authentic small ship expedition cruising. Established in 1952, New Zealand's Fiordland National Park is now over 1.2 million hectares in size and rightly famous for its epic, grand scale scenery, untamed wilderness and unique wildlife including Bottlenose Dolphins, Fiordland Crested Penguins and New Zealand Fur Seals. However, Fiordland is also rich in natural history, geology and the location of some historical firsts and important restoration and conservation projects. It was our early exploration of these rarely visited and remote ice-carved mountains, verdant forests and winding fiords rich in wildlife, conservation and history which inspired our dream for responsible travel. For this special expedition we have paired two of the most remote, hard to reach and spectacular of Fiordland's destinations on the one voyage. Retrace the steps of Captain Cook along the shorelines of World Heritage Area Dusky Sound, one of Fiordland's largest fiords some 40-kilometres long and studded with more than 350 islands. Equally impressive, New Zealand's deepest fiord Doubtful Sound boasts lush rainforests, towering waterfalls and resident populations of New Zealand Fur Seals and rare Fiordland Crested Penguins. Only accessible by sea, Doubtful and Dusky Sounds are among the most isolated areas on New Zealand's mainland ensuring their pristine, epic beauty remains unspoiled and their historic sites undisturbed. Waterfalls, streams, rivers and fiords are enveloped with misty veils that come and go, revealing steep gradients of mountain peaks and sheltered valleys. Discover the calm waters of Fiordland in

solitude and explore some of its most unique and wild parts on this bucket list voyage. Note: some voyages operate in reverse, please contact us for more



information.

ITINERARY

Day 1: Te Anau/Doubtful Sound

Meet with your fellow expeditioners in Te Anau before travelling across Lake Manapouri and over the Wilmot Pass to Deep Cove in Doubtful Sound (times and meeting point will be confirmed with your voyage documents). The Captain and Expedition Leader will be waiting to welcome you aboard Heritage Explorer and show you to your cabin. Settle into life aboard before we set sail along the scenic waterways of Doubtful Sound before finding a suitable anchorage to enjoy your first evening aboard.

The Small Cruise Ship Collection
www.small-cruise-ships.com

01432 507 280 (within UK)

info@small-cruise-ships.com | small-cruise-ships.com



The Small Cruise Ship Collection

www.small-cruise-ships.com

small-cruise-ships.com

info@small-cruise-ships.com

Day 2: Doubtful & Breaksea Sounds

After a quiet night aboard surrounded by the nature and wilderness of Fiordland we continue our explorations of the most spectacular scenery in all of Fiordland - Doubtful Sound, or the 'sound of silence' as it's also known. Spanning some staggering 40-kilometres and holding the title as New Zealand's deepest fiord, Doubtful Sound with its cloud-scraping wilderness cloaked mountains, sheer stone cliffs, waterfalls, inlets, quiet coves and wildlife presents nature on a scale so grand it's off the chart. Sailing along the Fiordland coast towards the extensive protected waters that are Breaksea and Dusky Sounds, join your naturalists on deck to spot seabirds including the majestic Wandering and Buller's Albatross. Breaksea Island guards the entrance to Breaksea Sound, it was here that the first successful island rat eradication program was completed and today Breaksea Island is a protected nature reserve of great significance to the many endangered species which call the island home.

Day 3: Breaksea Sound & Acheron Passage

Today we explore our way through the waters of Breaksea Sound and Acheron Passage. Resolution Island is separated from the mainland by the scenic waters of Acheron Passage and at the southern end of the passage we enter Dusky Sound, be sure to be on the lookout for resident Bottlenose Dolphins. This afternoon you might like to join the chefs fishing for tonight's dinner, or take the kayaks for a shoreline exploration. Our time here may include venturing into Wet Jacket Arm where the crew of Cook's Resolution ended up with wet jackets during their

survey work. It is also the site where moose were released, and last seen, in New Zealand.

Day 4: Dusky Sound

Visit Luncheon Cove on Anchor Island, where the first European boat was built in New Zealand. Take a short walk or explore along the coastline and be amazed by the birdlife with South Island Saddleback, Robins, Yellowhead and Parakeets in abundance on the island thanks to its predator-free status. It was on nearby Pigeon Island pioneering conservationist Richard Henry was based during his time in Dusky Sound. At Astronomer's Point there may be the opportunity to walk in the footsteps of Captain Cook and his astronomer William Wales as it was here that the Resolution was moored during their time in Dusky Sound. Our expedition cruise through Dusky Sound visits the some of the most significant historical and conservation sites in New Zealand, as well as offering some of the most majestic scenery in New Zealand as we sail deep into the heart of Fiordland.

Day 5: Dusky Sound/Te Anau

This morning Heritage Explorer sails to Supper Cove at the very head of Dusky Sound, it is a last opportunity for you to bask in the majesty of the fiords, then take in the grand views and awe-inspiring scenery as you enjoy a spectacular helicopter transfer back to Te Anau. In case of unexpected delays, we ask you not to book any onward travel from Te Anau until after 1pm this afternoon.

The Small Cruise Ship Collection

www.small-cruise-ships.com

01432 507 280 (within UK)

info@small-cruise-ships.com | small-cruise-ships.com



Please Note:

Itineraries are subject to change.



01432 507 280 (within UK)

info@small-cruise-ships.com | small-cruise-ships.com



The Small Cruise Ship Collection

www.small-cruise-ships.com

small-cruise-ships.com

info@small-cruise-ships.com

YOUR SHIP: HERITAGE EXPLORER

YOUR SHIP: Heritage Explorer

VESSEL TYPE:

LENGTH:

PASSENGER CAPACITY:

BUILT/REFURBISHED:

New Zealand-built expedition yacht Heritage Explorer joins Heritage Expedition's small ship fleet creating new opportunities of discovery around the shores of New Zealand. Setting a new standard for discovery travel in New Zealand, Heritage Explorer combines the ultimate in comfort with unique itineraries and a personalised experience with a maximum of just 18 guests on board. Heritage Explorer is a 30-metre, 4-deck New Zealand flagged vessel built in 2004 by the renowned wooden boat building family Carey's Boatyard in Picton. It features a contemporary wood-finished interior, 10 well-appointed cabins across three decks, dining room boasting spectacular 180-degree panoramas and theatre capabilities; lounge and bar featuring a flight of inclusive regional New Zealand wines, beers and spirits; and a well-stocked local library. Outside, guests can enjoy plenty of covered space on the Bridge Deck, or ajourn to the Sun Deck perfect for wildlife spotting, sunrises and sunsets, or simply enjoying watch your voyage unfold. Kayaks and fishing equipment are available for use during the voyage, while two tenders allow for deeper exploration and the unforgettable wildlife encounters synonymous with all Heritage Expeditions adventures. As with as with our other vessels, Heritage Explorer

will have an open bridge policy and a full commercial kitchen helmed by a talented chef focused on highlighting local produce and any guest catches of the day, as well as an enthusiastic and passionate expedition team, and will be shipped by a New Zealand captain and crew. The expedition yacht features state-of-the-art technology to provide a comfortable expedition with high performance dual Scania 653 horsepower engines, bow thrusters, fin stabilisers, full air-conditioning, sound attenuated twin generators and a hydraulic aft ramp, while a comprehensive navigation package ensures the ultimate Kiwi adventure awaits all guests. Accommodation Details Royal: Located on the Bridge Deck, our Master Suite features a spacious bedroom with a queen-sized bed, ample storage with wardrobe and drawers, mirror and washbasin, private en suite, personal climate control, TV, PABX satellite telephone, window and French doors opening out on to the covered Bridge Deck. Salvin's: Located on the Lower Deck, Salvin's cabins have the option of either a double bed or two lower berths. Both feature ample storage with wardrobe and drawers, TV, PABX satellite telephone, private en suite and a picture porthole. Wandering: Located on the Lower Deck, Wandering cabins feature one lower single berth, ample storage with wardrobe and drawers, TV, PABX satellite telephone, private en suite and a porthole. Buller's: Located on the Lower Deck, the Buller's cabin features one bunk (one upper and one lower berth), ample storage with wardrobe and drawers, TV, PABX satellite telephone, private en suite and

The Small Cruise Ship Collection

www.small-cruise-ships.com

01432 507 280 (within UK)

info@small-cruise-ships.com | small-cruise-ships.com



a porthole.

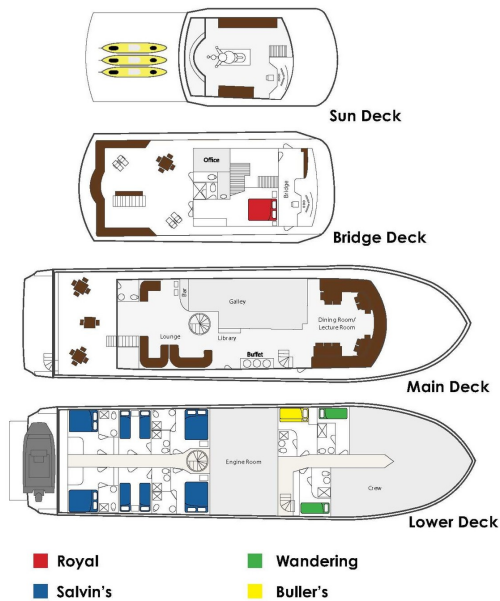
The Small Cruise Ship Collection

www.small-cruise-ships.com

small-cruise-ships.com

info@small-cruise-ships.com

INSIDE YOUR SHIP



Buller's



Royal



Salvin's



Salvin's Double



Salvin's Twin

Wandering

The Small Cruise Ship Collection

www.small-cruise-ships.com

small-cruise-ships.com

info@small-cruise-ships.com

PRICING

03-Feb-2025 to 07-Feb-2025

Buller's	£2385 GBP pp
Wandering	£2795 GBP pp
Royal	£3245 GBP pp
Salvin's	£2575 GBP pp

24-Feb-2025 to 28-Feb-2025

Buller's	£2385 GBP pp
Wandering	£2795 GBP pp
Royal	£3245 GBP pp
Salvin's	£2575 GBP pp

08-Mar-2025 to 12-Mar-2025

Buller's	£2385 GBP pp
Wandering	£2795 GBP pp
Royal	£3245 GBP pp
Salvin's	£2575 GBP pp

27-Jul-2025 to 31-Jul-2025

Buller's	£2385 GBP pp
Wandering	£2795 GBP pp
Royal	£3245 GBP pp
Salvin's	£2575 GBP pp

09-Sep-2025 to 13-Sep-2025

Buller's	£2385 GBP pp
Wandering	£2795 GBP pp
Royal	£3245 GBP pp
Salvin's	£2575 GBP pp

13-Sep-2025 to 17-Sep-2025

Buller's	£2385 GBP pp
Wandering	£2795 GBP pp
Royal	£3245 GBP pp
Salvin's	£2575 GBP pp

29-Jan-2026 to 03-Feb-2026

Buller's	£2995 GBP pp
Salvin's Double	£3370 GBP pp
Salvin's Twin	£3370 GBP pp
Wandering	£3520 GBP pp
Royal	£4090 GBP pp

07-Feb-2026 to 11-Feb-2026

Buller's	£2495 GBP pp
Salvin's Twin	£2795 GBP pp
Salvin's Double	£2795 GBP pp
Wandering	£2935 GBP pp
Royal	£3395 GBP pp



The Small Cruise Ship Collection

www.small-cruise-ships.com

small-cruise-ships.com

info@small-cruise-ships.com

PRICING

28-Feb-2026 to 04-Mar-2026

Buller's	£2495 GBP pp
Salvin's Double	£2795 GBP pp
Salvin's Twin	£2795 GBP pp
Wandering	£2935 GBP pp
Royal	£3395 GBP pp

12-Mar-2026 to 16-Mar-2026

Buller's	£2495 GBP pp
Salvin's Double	£2795 GBP pp
Salvin's Twin	£2795 GBP pp
Wandering	£2935 GBP pp
Royal	£3395 GBP pp

01-Aug-2026 to 05-Aug-2026

Buller's	£2495 GBP pp
Salvin's Double	£2795 GBP pp
Salvin's Twin	£2795 GBP pp
Wandering	£2935 GBP pp
Royal	£3395 GBP pp

09-Aug-2026 to 13-Aug-2026

Buller's	£1996 GBP pp
Salvin's Double	£2236 GBP pp
Salvin's Twin	£2236 GBP pp
Wandering	£2348 GBP pp
Royal	£2716 GBP pp