

# The Small Cruise Ship Collection

www.small-cruise-ships.com

small-cruise-ships.com

info@small-cruise-ships.com

## FABLED LANDS OF THE NORTH: GREENLAND TO NEWFOUNDLAND

Embark the National Geographic Explorer for a thrilling exploration of the far north's ice-carved landscapes, sailing from Greenland to Newfoundland and Labrador. Navigate massive icebergs at the mouth of the Ilulissat Icefjord, and venture into Davis Strait en route to Canada's legendary Baffin Island. Along the way, encounter historic Viking villages, an abandoned Moravian mission, and the fascinating traditions of the Inuit communities who still live in these remote places. Hike the tundra on the lookout for caribou and arctic foxes; and seek out whales, walrus, and polar bears along the rugged coastlines by sea kayak and Zodiac.



### ITINERARY

DAY 1: Reykjavik

Arrive in Reykjavik. Choose to soak in the geothermal waters of the Blue Lagoon or visit a local hot springs, a geothermal power

The Small Cruise Ship Collection  
www.small-cruise-ships.com

01432 507 280 (within UK)

info@small-cruise-ships.com | small-cruise-ships.com



## The Small Cruise Ship Collection

[www.small-cruise-ships.com](http://www.small-cruise-ships.com)

[small-cruise-ships.com](http://small-cruise-ships.com)

[info@small-cruise-ships.com](mailto:info@small-cruise-ships.com)

plant, and an Icelandic horse farm. After lunch, check in to the Grand Hótel Reykjaví k. (L,D)

### DAY 2: Kangerlussuaq, Greenland

Fly by chartered aircraft to Greenland and embark the National Geographic Explorer at the head of Kangerlussuaq fjord, a 120-mile-long waterway whose name means “large fjord” in Greenlandic. (B,L,D)

### DAY 3: Greenland’s West Coast & Sisimiut

Dozens of deep fjords carve into Greenland’s west coast, many with glaciers fed by the ice sheet that covers about 80 percent of the country. Discover this beautiful and rugged coastline in Zodiacs, keeping an eye out for humpback and minke whales. At Sisimiut, a former whaling port, visit the museum and stroll around a picturesque jumble of historic and modern wooden buildings. (B,L,D)

### DAY 4: Disko Bay and Ilulissat

Sail into Qeqertarsuup Tunua, also known as Disko Bay, to explore the World Heritage site of Ilulissat Icefjord, a tongue of the Greenland ice cap that extends to the sea. Take an extraordinary cruise among towering icebergs at the mouth of the fjord. Visit the town of Ilulissat and walk to the archaeological site in Sermermiut, an abandoned valley previously inhabited by several distinct Inuit cultures. (B,L,D)

### DAY 5: At Sea/Davis Strait

Watch for whales and polar bears, enjoy the ship’s amenities, and attend expert-led talks about the Arctic as we navigate the massive icebergs of Davis Strait on the way to Baffin Island. (B,L,D)

### DAY 6: Cumberland Peninsula, Baffin Island, Canada

Disembark at the hamlet of Pangnirtung—home to the Inuit for thousands of years—and interact with its thriving community of artists. Visit a craft center to see soapstone carvings, weavings, and prints depicting life in the Arctic. Hike along a riverside trail for sweeping views of Auyuittuq National Park, and discover the remains of a bygone whaling era on uninhabited Kekerten Island. (B,L,D)

### DAY 7: Hall Peninsula, Baffin Island

Spend today exploring the unspoiled landscapes of the Hall Peninsula, and get acquainted with the Arctic tundra biome. Hike the tundra in search of arctic foxes and walrus hauls out on the shore. (B,L,D)

### DAY 8: South Baffin Island

In keeping with the nature of an expedition, today’s itinerary is flexible to maximize wildlife sightings. Set out in pursuit of polar bears, which often find themselves stranded on the Lower Savage Islands and Resolution Island after the pack ice retreats during the summer. (B,L,D)

### DAY 9: Button Islands, Nunavut

Scattered across the entrance to Hudson Strait, the Button Islands attract thousands of seabirds and marine mammals. Encounter wildlife on kayak and Zodiac excursions along the coast. (B,L,D)

### DAYS 10-13: Exploring The Labrador Coast

Spend four days tracing the beautiful, wild coast of Labrador, exploring on foot and by kayak and Zodiac. Stop at the deserted outpost of Hebron, the peninsula’s northernmost settlement, to walk among the historic buildings of the Moravian Mission

The Small Cruise Ship Collection  
[www.small-cruise-ships.com](http://www.small-cruise-ships.com)

01432 507 280 (within UK)

[info@small-cruise-ships.com](mailto:info@small-cruise-ships.com) | [small-cruise-ships.com](http://small-cruise-ships.com)



## The Small Cruise Ship Collection

[www.small-cruise-ships.com](http://www.small-cruise-ships.com)

[small-cruise-ships.com](http://small-cruise-ships.com)

[info@small-cruise-ships.com](mailto:info@small-cruise-ships.com)

Station established here in the 1830s. Watch for peregrine falcons and other birds soaring over the rocky shorelines of the spectacularly narrow Mugford Tickle, and take in the impressive sight of the 4,000-foot-high Kaumajet Mountains. Enjoy a day on Quaker Hat Island, shaped like a broad-brimmed hat, and head into the tiny fishing settlement of Indian Harbour to observe vast colonies of common murre along the sea cliffs. Continue to scenic Battle Harbour to discover the reconstructed 19th-century buildings and legacy of this historic fishing village. (B,L,D)

#### DAY 14: L'anse Aux Meadows

In the 1960s, the remains of a Viking village established in the 11th century were excavated at L'Anse aux Meadows, now a UNESCO World Heritage site. Walk among the Norse ruins and reconstructed sod huts, and learn the saga of the Vikings in North America—who arrived here nearly 500 years before the explorations of Columbus. (B,L,D)

#### DAY 15: Northern Newfoundland

Cliffs, fjords, and beaches grace northern Newfoundland. Hike, kayak, and explore by Zodiac amid this stunning scenery. Back on board the ship, gain insights from our experts on this unique landscape. (B,L,D)

#### DAY 16: St. John's, Newfoundland/ U.S.

In the early morning, glide through the natural gateway called The Narrows and arrive in St. John's, the picturesque capital of Newfoundland and Labrador and home to Cape Spear—the most easterly point of North America. Then transfer to the airport for your flight home. (B)

Please Note:

All day-by-day breakdowns are a sampling of the places we intend to visit, conditions permitting.

# The Small Cruise Ship Collection

www.small-cruise-ships.com

small-cruise-ships.com

info@small-cruise-ships.com

## YOUR SHIP: NATIONAL GEOGRAPHIC EXPLORER

<b>YOUR SHIP:</b>	<b>National Geographic Explorer</b>
<b>VESSEL TYPE:</b>	<b>Luxury Expedition</b>
<b>LENGTH:</b>	<b>108 meters</b>
<b>PASSENGER CAPACITY:</b>	<b>148 (single &amp; twin cabins)</b>
<b>BUILT/REFURBISHED:</b>	<b>1982 / 2008</b>

National Geographic Explorer is a state-of-the-art expedition ship. It is a fully stabilized, ice-class vessel, enabling it to navigate polar passages while providing exceptional comfort. It carries kayaks and a fleet of Zodiac landing craft. An Undersea Specialist operates a remotely operated vehicle (ROV) and sophisticated video equipment, extending access to the underwater world. Public areas : Bistro Bar; Chart Room; Restaurant; Global Gallery; Library, Lounge with full service bar and state-of-the-art facilities for films, slideshows and presentations; Mud Room with lockers for expedition gear, and Observation Lounge. Our "Open Bridge" provides guests an opportunity to meet our Officers and Captain and learn about navigation. Meals : Served in single seatings with unassigned tables for an informal atmosphere and easy mingling. Menu is international with local flair. Cabins : All cabins face outside with windows or portholes, private facilities and climate controls. Expedition Equipment : Zodiac landing craft, kayaks, Remotely Operated Vehicle (ROV), hydrophone, SplashCam, underwater video camera, Crow's Nest remote controlled camera, video microscope, snorkeling gear. Special Features : A full-time doctor, Undersea Specialist, LEX Photo Specialist and Video

Chronicle, Internet Cafe and laundry. Wellness : The vessel is staffed by two Wellness Specialists and features a glass enclosed Fitness Center, outdoor stretching area, two LEXspa treatment rooms



and Sauna.

The Small Cruise Ship Collection

www.small-cruise-ships.com

01432 507 280 (within UK)

info@small-cruise-ships.com | small-cruise-ships.com

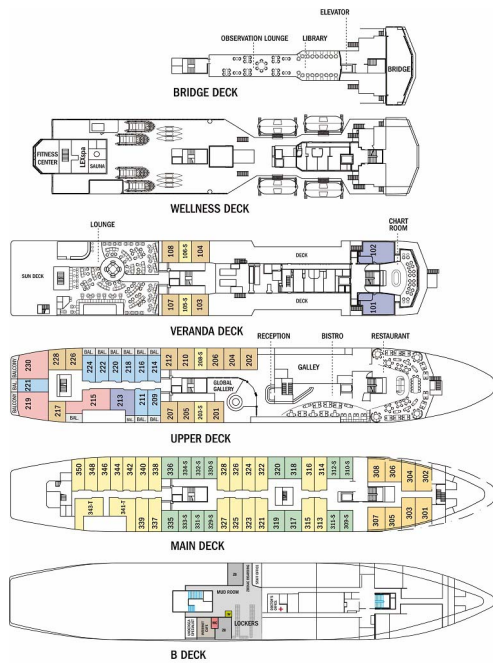
# The Small Cruise Ship Collection

www.small-cruise-ships.com

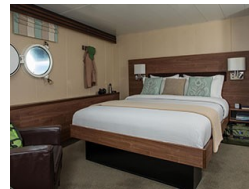
small-cruise-ships.com

info@small-cruise-ships.com

## INSIDE YOUR SHIP



Category 1



Category 2



Category 3



Category 4



Category 5

Category 6

Category 7

Category SA (solo)



# The Small Cruise Ship Collection

[www.small-cruise-ships.com](http://www.small-cruise-ships.com)



[small-cruise-ships.com](http://small-cruise-ships.com)

[info@small-cruise-ships.com](mailto:info@small-cruise-ships.com)

## PRICING

16-Aug-2025 to 31-Aug-2025

Category SB (solo)	£17671 GBP pp
Category 6	£20966 GBP pp
Category 3	£14167 GBP pp
Category 5	£18309 GBP pp
Category 4	£15192 GBP pp
Category 2	£13611 GBP pp
Category 7	£24439 GBP pp
Category 1	£12454 GBP pp
Category SA (solo)	£16988 GBP pp



The Small Cruise Ship Collection

[www.small-cruise-ships.com](http://www.small-cruise-ships.com)

01432 507 280 (within UK)

[info@small-cruise-ships.com](mailto:info@small-cruise-ships.com) | [small-cruise-ships.com](http://small-cruise-ships.com)