

# The Small Cruise Ship Collection

www.small-cruise-ships.com

small-cruise-ships.com

info@small-cruise-ships.com

## EUROPEAN SPRING EXPLORER – FROM LISBON TO DOVER CRUISE

UNESCO treasures Your adventure begins in the history-rich Portuguese capital of Lisbon, home to UNESCO sites such as the Belem Tower. Setting sail, you'll head north towards Porto, where you'll explore the tiled façades and ornate churches of its historic centre. Continuing to Ferrol, Spain's 18th century port city, you can join an excursion to the medieval pilgrimage city of Santiago de Compostela. Delights of spring Heading towards the British Isles, our compact ship and small expedition boats allow us to call at breathtaking archipelagos on the way. Turquoise waters and white sands await you in the Isles of Scilly. Explore charming villages and picturesque coastlines, and soak up the kaleidoscopic colours of spring. And in the Channel Islands, Europe's hidden gem, you'll seek out vibrant wildflowers amid the spring birdsong.



### ITINERARY

Day 1 Legendary Lisbon

Set out from this enchanting city

The Portuguese capital is rich in history and culture. Take a stroll through the classical districts of Baixa and Bairro Alto, Chiado, and Alfama, the old Islamic quarter, where there are remains of a Roman theatre and Moorish fortress. A bit outside the city

The Small Cruise Ship Collection

www.small-cruise-ships.com

01432 507 280 (within UK)

info@small-cruise-ships.com | small-cruise-ships.com



## The Small Cruise Ship Collection

[www.small-cruise-ships.com](http://www.small-cruise-ships.com)

[small-cruise-ships.com](http://small-cruise-ships.com)

[info@small-cruise-ships.com](mailto:info@small-cruise-ships.com)

centre, you can visit the beautiful UNESCO World Heritage sites of Belem Tower and Jeronimos Monastery before you set sail.

MS Fram awaits you in the harbour. After being welcomed aboard, settle into your cabin and begin your adventure at sea.

With so much to see in and around Lisbon, why not arrive early and join one of our optional Pre-Programmes.

### Day 2 Charming Porto (Leixões)

Explore the UNESCO-listed historic centre of Porto

Our first stop is Leixoes, Portugal. From here, you can see the lighthouse of Leça, the Boa Nova Chapel, and the beautiful beach of Praia Azul.

You can take a shuttle bus to Porto - famed for its port wine and UNESCO-listed historic centre. An undulating city made for walking, you'll fall in love with the pastel houses, colourful tiled façades, street art, ornate churches and panoramic views across the Douro River.

Here, you can stroll along the bustling promenade by the Ribeira docks, cross the Dom Luis I Bridge, snack on delicious petiscos, and enjoy wine tastings at the port cellars of Vila Nova de Gaia.

### Day 3 Galician highlights

See Galicia's heritage in Ferrol

As we enter the ria of Ferrol, admire the imposing forts of La Palma and San Felipe that sit on either side of the headland, protecting the city within.

Ferrol is one of Spain's best preserved 18th century port cities. While you're here, criss-cross Barrio de la Magdalena's grid of streets and explore the city's maritime museums.

El Camino Ingles, one of the Camino de Santiago pilgrimage routes, starts in Ferrol. You may also be able to join an excursion to Santiago de Compostela, a UNESCO World Heritage Site and one of the most important Christian sites in the world.

### Day 4 At sea

Relax at sea and prepare for the adventures ahead

As we say goodbye to the Iberian Peninsula, MS Fram follows in the wake of Roman and Medieval traders as she heads for the springtime splendour of northern Europe.

This is the perfect opportunity to make the most of your ship's onboard comforts. Relax in the hot tubs or panoramic sauna and unwind in our Explorer Lounge & Bar. Look out for dolphins out on deck or join your Expedition Team for a talk or workshop, and discover more in the Science Centre.

### Day 5 Spring in the Isles of Scilly

The Small Cruise Ship Collection

[www.small-cruise-ships.com](http://www.small-cruise-ships.com)

01432 507 280 (within UK)

[info@small-cruise-ships.com](mailto:info@small-cruise-ships.com) | [small-cruise-ships.com](http://small-cruise-ships.com)





## The Small Cruise Ship Collection

[www.small-cruise-ships.com](http://www.small-cruise-ships.com)

[small-cruise-ships.com](http://small-cruise-ships.com)

[info@small-cruise-ships.com](mailto:info@small-cruise-ships.com)

Enjoy crystal waters, sandy beaches and natural beauty

Just 30 miles off the tip of Cornwall are the Isles of Scilly. This enchanting archipelago is home to some exquisite small islands with crystal clear waters, pristine beaches and stunning natural beauty. We'll anchor the ship here and head ashore aboard local boats.

If conditions allow, we'll split our time here. You can explore Treco's white sandy beaches and the spectacular 19th century Abbey Gardens, which will be awash with the vibrant colours of spring. We also hope to visit St Mary's, the largest of the isles. Wander through the charming streets of Hugh Town or follow the coastal paths to discover dramatic seascapes and rocky coves. Perhaps you may also like to join a boat trip around the archipelago, scouting for seals and breeding seabirds.

[Day 6 & 7 The Channel Islands](#)

Discover a hidden gem on the edge of Europe

Lying between France and mainland Britain, the Channel Islands are a captivating archipelago with intriguing history and a landscape of unspoilt beaches, coastal castles and lush countryside.

If conditions allow, we'll anchor off Guernsey, the 'Island of

Flowers', and take our small expedition boats towards St Peter Port Harbour, passing the 13th century Castle Cornet which stands guard on the headland.

We also plan to visit Alderney, where you'll join your Expedition Team for a guided walk, seeking out vibrant wildflowers amid the spring birdsong.

[Day 8 Disembark in Dover](#)

Say farewell by the renowned white cliffs

The sight of the white cliffs of Dover signals the end of this spring expedition cruise.

As we sail into Dover with the iconic cliffs coming into view, we'll dock at the harbour, and then it's time to say a fond farewell to MS Fram and to all those who have made your expedition cruise such a memorable experience.

[Please note:](#)

Itineraries are subject to change.

The Small Cruise Ship Collection

[www.small-cruise-ships.com](http://www.small-cruise-ships.com)

**01432 507 280** (within UK)

[info@small-cruise-ships.com](mailto:info@small-cruise-ships.com) | [small-cruise-ships.com](http://small-cruise-ships.com)



## The Small Cruise Ship Collection

[www.small-cruise-ships.com](http://www.small-cruise-ships.com)

[small-cruise-ships.com](http://small-cruise-ships.com)

[info@small-cruise-ships.com](mailto:info@small-cruise-ships.com)

## YOUR SHIP: FRAM

**YOUR SHIP:**

**Fram**

**VESSEL TYPE:**

**LENGTH:**

**PASSENGER CAPACITY:**

**BUILT/REFURBISHED:**

MS Fram is designed for sailing in polar waters, holds the highest safety standards and is the perfect size for optimum nautical manoeuvrability and guests' comfort. With space for only 276 guests, you are sure to get to know many of your fellow travellers. You will share stunning sights and memories of a lifetime long after returning home. The Norwegian word Fram means 'forward' - lifting expectations of the voyage at hand. MS Fram was built in 2007 with one mission in mind - to bring her guests closer to nature, wildlife and unforgettable experiences. As well as offering numerous lounges in which to relax, our more active guests can use our well-equipped gym. Meanwhile, on deck, our Jacuzzis guarantee you surreal memories when passing the towering icebergs of Antarctica or Greenland.



The Small Cruise Ship Collection

[www.small-cruise-ships.com](http://www.small-cruise-ships.com)

**01432 507 280** (within UK)

[info@small-cruise-ships.com](mailto:info@small-cruise-ships.com) | [small-cruise-ships.com](http://small-cruise-ships.com)



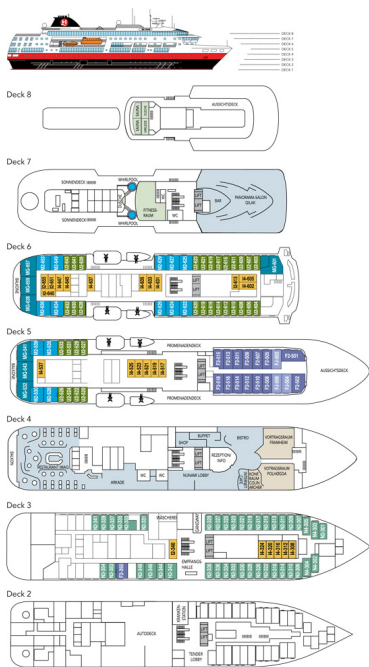
# The Small Cruise Ship Collection

www.small-cruise-ships.com

small-cruise-ships.com

info@small-cruise-ships.com

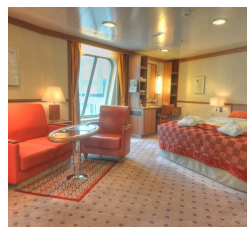
## INSIDE YOUR SHIP



Arctic Superior. From



Expedition Suite. From



Polar Outside. From



The Small Cruise Ship Collection

www.small-cruise-ships.com

01432 507 280 (within UK)

info@small-cruise-ships.com | small-cruise-ships.com



The Small Cruise  
Ship Collection

[www.small-cruise-ships.com](http://www.small-cruise-ships.com)

[small-cruise-ships.com](http://small-cruise-ships.com)

[info@small-cruise-ships.com](mailto:info@small-cruise-ships.com)

## PRICING

01-May-2026 to 08-May-2026

Expedition Suite. From	£4525 GBP pp
Polar Outside. From	£3329 GBP pp
Arctic Superior. From	£3525 GBP pp