

The Small Cruise Ship Collection

www.small-cruise-ships.com

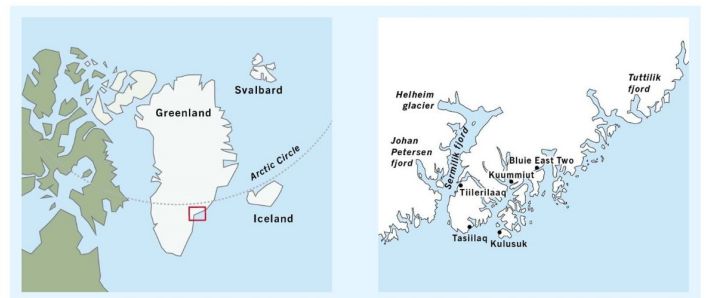


small-cruise-ships.com

info@small-cruise-ships.com

EAST GREENLAND AND THE MIGHTY FJORDS AROUND SERMILIK

In the heart of the Greenlandic wilderness lies a hidden gem waiting to be explored - the grand Sermilik fjord and its surrounding areas, full of beautiful hiking opportunities. In many terms these parts of the world are still undiscovered. We are greeted by towering mountain chains, calving glaciers, icebergs of all shapes and crystal-clear waters. The nutritious waters provide feeding ground for both humpbacks and fin whales and if lucky we will encounter these giants of the sea. We also get unique insight into the Inuit culture, their way of life, traditional practices, and cultural heritage. This natural wonder of East Greenland is so much more than a destination, it's a true experience of a lifetime!



ITINERARY

Day 1: Reykjavik

We arrive individually to Reykjavik and check in to our hotel (included in the flight and hotel package described below).

Day 2: Reykjavik & flight to Kulusuk, Greenland

Explore the lovely city of Reykjavik on your own. In the afternoon we transfer to Keflavik and our flight to Kulusuk, and the airport built by the US Air Force in 1956. Kulusuk means "the village with the mountain that looks like the breast of a bird" in the Greenlandic, referring to the Isikajia Mountain located directly behind the airport. In the evening we board our expedition ship



and begin our great exploration.

Day 3 - 8: Expedition cruising

We are now on an expedition cruise and our exact route will be decided by weather and ice. Some areas can be filled with ice and therefore not always reachable. Please note that the places mentioned below are just examples of places we can visit on this true expedition cruise.

We visit the town of Tasiilaq. With just under 2000 inhabitants, it is the largest settlement in East Greenland. It is home to an older and different Inuit culture, where shamanism and native culture is much more vibrant than in other parts of Greenland. During our expedition here, we will learn more of local myths and legends, as the one about tupilaqs. In Greenlandic Inuit religion, a tupilaq was an avenging monster fabricated by a practitioner of witchcraft or shamanism by using various objects such as animal bone, skin, hair, or sinew. Tasiilaq is also known for its art scene, where local artists create prints, sculptures and textiles mostly portraying the animals, landscapes and traditional stories of the area.

We venture into the serenity of the Ammassalik fjord system and the small settlement of Kuummiut. This is a relatively unknown pearl of east Greenland, nestled within the Ammassalik Island group. The surrounding fjords - lined by tall mountain tops offer perfect hiking opportunities, with hidden waterfalls and spectacular views. Kuummiut has a rich Inuit heritage, and we

hope to get the opportunity to learn about the traditional practices.

Further up north is the Ikateq fjord, where we might make a landing at the abandoned military base from World War II, Blueie East Two. It played an important role in serving as a refuelling and maintenance stop for aircrafts travelling between north America and Europe. Today it is no longer in operation, but some remnants still exist, such as abandoned fuel drums, buildings and vehicles.

Further east is two impressive glaciers: Karale and Knud Rasmussen. When sailing in this area we will most likely hear and see thundering calvings of these two very active glaciers.

We continue into the mighty Sermilik fjord. It stretches over 90 kilometres and cuts through a rugged landscape of towering glaciers and jagged peaks, and we find ourselves amongst a myriad of icebergs of all shapes and sizes. Most of them originating from the impressive Helheim glacier at the deep end of the fjord, which produces some of the largest icebergs in all of Greenland. The beauty around us is stunning!

On the southern shores of Sermilik fjord is the tiny village of Tilerilaaq. The wooden houses are beautifully situated on a hill, with the grand Sermilik fjord in the background. The local Inuit culture and the traditional hunting and fishing activities play a significant role in the way of life here. Before we wave goodbye, we head out on a nice hike to overview the surrounding landscapes and the many icebergs!

If the ice allows, we enter Johan Peterson fjord. On the northern



side of the entrance of the fjord is Qeertartivatsiaq Island, where we find Inuit ruins on the southern shore of the island. At the head of the fjord are some outlet glaciers from the inland ice coming straight down to the sea. This is one of few places you can catch sight of the actual inland ice, although please know that it is often blocked by beautiful icebergs.

We are continuously looking for Arctic foxes, seals and different species of whale.

Day 9: Kulusuk – Reykjavik

After a long, nice breakfast, we disembark in Kulusuk. We head out on one final Greenland excursion: a glacier hike to an ice cave - it is a truly unique experience to lose yourself in this surreal world of blue and to take in all of the cave's incredible details. After an early dinner in Kulusuk, we head to the airport and our flight to Reykjavik, where we check into our hotel for a good night sleep. (Included in the flight and hotel package.)

Day 10: Homeward bound

Today we bid our farewells and return home or onwards for new adventures.

Please Note:

Our exact route will depend on ice, weather conditions and wildlife. The places mentioned are just examples of some of the sites this region of Greenland has to offer. We always strive to maximize your experience. Please remember that flexibility is the key to a successful expedition!



The Small Cruise Ship Collection

www.small-cruise-ships.com

small-cruise-ships.com

info@small-cruise-ships.com

YOUR SHIP: BALTO

YOUR SHIP: Balto

VESSEL TYPE:

LENGTH:

PASSENGER CAPACITY:

BUILT/REFURBISHED:

M/S Balto, named after the leading sled dog of 1925 Nome serum run. She was built for the highest ice class in Rauma, Finland, to serve as a government service vessel in the Baltic sea. During 2019-2020, she has been totally refurbished and is now one of the roomiest and most elegant small polar expedition yachts in service. M/S Balto offers a relaxed luxury accommodation for 12 guests in 7 outside cabins, all with private facilities and lower beds. The spacious cabins include 1 Owner's cabin, 1 superior cabin, 3 double cabins and 2 single cabins. The Owner's cabin is 30m², has 6 windows and a queen bed, the superior cabin has two twin beds while the double cabins has a queen bed. The Owner's and superior cabin also offer a separate seating area. In all cabins you find a desk with a chair and a closet for storage. On the guest deck you also find a cedar lined sauna, accommodating 4-6 persons, with a cold shower and a small changing room. The richly appointed saloon and the beautiful dining messroom feature crotch-mahogany panelling, a bar, a card table, a library, coffee and tea stations. She offers a large restaurant style open galley, where you can check on the marvels of our chefs and sample freshly baked bread. There are several open and semi enclosed deck spaces

from where you can enjoy the stunning Arctic sceneries. You are welcomed by an international crew and the bridge is open for visitors. The ship has been fitted with an electric diesel propulsion capable of maintaining versatile manoeuvring and survey speeds with no vibration. It is therefore ideal as film and photo platform. There is also a mud room for expedition gear and two Zodiacs for wilderness cruises and offshore experiences. M/S Balto is truly one of a kind when it comes to small polar expedition ships. Travelling with this unique 12-passenger ship offers a completely different and much more intimate experience of Greenland compared to a larger expedition ship. A small group of merely 12 passengers gives us more flexibility, unique itineraries and more time ashore. Also, the footprints we leave behind are a lot smaller! The M/S Balto is designed to explore the most remote fjord systems, visit isolated Inuit settlements, take you to secret anchorages and maximise each guest's experience in the unspoiled wilderness. This is true

The Small Cruise Ship Collection

www.small-cruise-ships.com

01432 507 280 (within UK)

info@small-cruise-ships.com | small-cruise-ships.com



 The Small Cruise
Ship Collection

www.small-cruise-ships.com

small-cruise-ships.com

info@small-cruise-ships.com



micro cruising.



The Small Cruise Ship Collection

www.small-cruise-ships.com

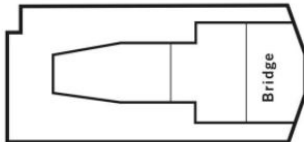


small-cruise-ships.com

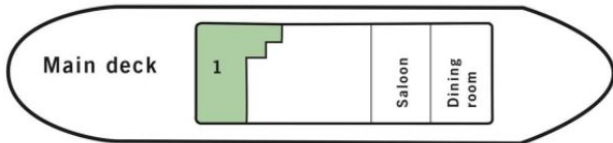
info@small-cruise-ships.com

INSIDE YOUR SHIP

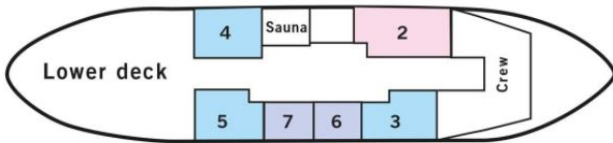
Top deck



Main deck



Lower deck



Double Cabin



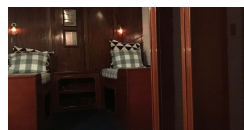
Owner's Cabin



Single Cabin



Superior Cabin





The Small Cruise Ship Collection

www.small-cruise-ships.com



small-cruise-ships.com

info@small-cruise-ships.com

PRICING

13-Aug-2025 to 22-Aug-2025

Owner's Cabin	£9001 GBP pp
Single Cabin	£9232 GBP pp
Superior Cabin	£7923 GBP pp
Double Cabin	£7384 GBP pp

20-Aug-2025 to 29-Aug-2025

Superior Cabin	£7923 GBP pp
Single Cabin	£9232 GBP pp
Owner's Cabin	£9001 GBP pp
Double Cabin	£7384 GBP pp

27-Aug-2025 to 05-Sep-2025

Double Cabin	£7384 GBP pp
Single Cabin	£9232 GBP pp
Owner's Cabin	£9001 GBP pp
Superior Cabin	£7923 GBP pp

09-Sep-2025 to 18-Sep-2025

Superior Cabin	£7923 GBP pp
Double Cabin	£7384 GBP pp
Owner's Cabin	£9001 GBP pp
Single Cabin	£9232 GBP pp

ADDITIONAL CHARGES:

Mandatory Flight and Hotel
Package 2590 USD pp



The Small Cruise Ship Collection

www.small-cruise-ships.com

01432 507 280 (within UK)

info@small-cruise-ships.com | small-cruise-ships.com