

The Small Cruise Ship Collection

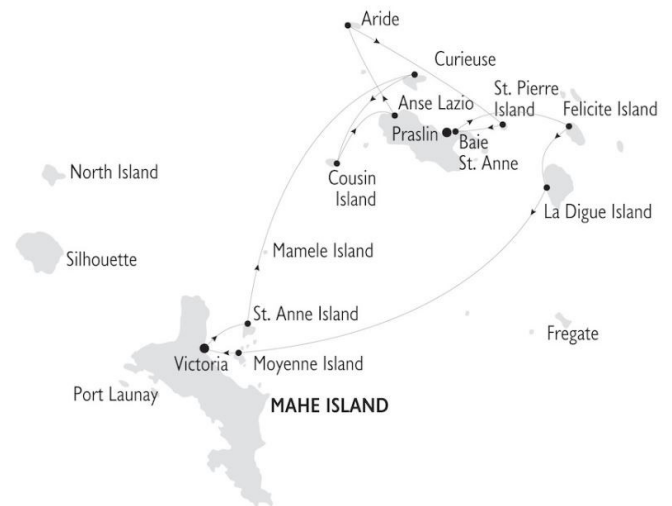
www.small-cruise-ships.com

small-cruise-ships.com

info@small-cruise-ships.com

8 DAY CRUISE IN THE SEYCHELLES

The Seychelles Islands are the perfect destination for both summer and winter cruises due to their warm year round climate. Discover the Seychelles the best way: By small ship! Hop from island to island in this unspoilt paradise and visit a variety islands renowned for their fauna and flora, and beaches. Snorkel or dive to see an amazing underwater world. Walk into centuries old rain forests with unique and endemic species of wildlife and spot the rare black parrots, the world famous Coco de Mer palm trees or the giant tortoise. We hop from island to island, taking plenty of time for swimming, snorkelling and relaxing on the amazing beaches. The pace of life here is slow, and why rush?



ITINERARY

Day 1 – Saturday Mahe Inter Island Quay - St Anne Island

Embarkation 15:00 to 16:00 pm. After the Welcome cocktail and safety drill, we leave Port Victoria and sail to nearby St Anne for a refreshing swim stop off the ship. Overnight at anchor near St Anne. Welcome dinner

Day 2 – Sunday St Anne Island - Curieuse

We leave St Anne Island early in the morning to reach Curieuse. This morning we visit this uninhabited island, once a leper colony and home to giant tortoises. Our walking excursion with a park guide will bring us to the farm, along mangrove forests.

The Small Cruise Ship Collection

www.small-cruise-ships.com

01432 507 280 (within UK)

info@small-cruise-ships.com | small-cruise-ships.com



The Small Cruise Ship Collection

www.small-cruise-ships.com

small-cruise-ships.com

info@small-cruise-ships.com

Later we return to the beach for a BBQ under the trees. In the afternoon you can enjoy the beach and sea activities. Overnight at anchor..

Day 3 - Monday Curieuse - Cousin Island - Anse Lazio

In the morning we sail for Cousin Island. Optional excursion to the Bird Sanctuary which is in the care Bird Life International. A quarter million birds breed on Cousin which also has several nesting beaches for turtles. Later in the afternoon we reach Anse Lazio. In the afternoon we sail to Anse Lazio, Praslin, one of the most beautiful beaches in the world. Time for water sports, snorkelling or optional diving. Evening at anchor.

Day 4 - Tuesday Anse Lazio - Aride - St Pierre - Baie St Anne, Praslin

In the morning we leave for Aride. Our optional excursion will take you all the way to the top of the island for an amazing view of the island. The island is home to the Wright's gardenia found nowhere else on earth and to bird species like the Audubon's shearwater, the Seychelles warbler. At noon we sail for St Pierre Island. We reach St Pierre after lunch for a 3 hour snorkeling and swimming stop. At sunset, we leave St Pierre to sail into Baie St Anne, Praslin. Overnight at dock. Creole Night.

Day 5 - Wednesday Baie St Anne, Praslin - Felicite - La Digue

Baie St. Anne, Praslin. Optional excursion to the famous Vallee de Mai Reserve, a World Heritage site. You will explore the pathways under tall palm trees which produce the famous Coco

de Mer and you might sight a black parrot only found in Praslin. Afternoon sailing to Felicite for swimming, snorkelling or optional diving excursion on this uninhabited island. Evening sailing to La Digue. Evening arrival at La Digue. Anchor in front of the Port. Overnight.

Day 6 - Thursday La Digue - Moyenne Island

Half day excursion in La Digue, the most photographed and quaint community in the Seychelles. Our optional excursion will take us by bus to the Veuve Nature Reserve and through Union Plantation to l' Anse Source d' Argent beach. Arrival at L' Union Estate and tour of the copra kiln, traditional coconut oil mill and the colonial plantation house. Time at Anse Source D' Argent one of the most magnificent beaches in the world. Marvel at some of Seychelles most impressive rock formations - truly unique, whilst enjoying a refreshment. Time for hunting souvenirs at La Passe, the islands main village, before returning to the ship. Late afternoon sailing to Moyenne island, opposite Mahe. Evening arrival at Moyenne. Overnight at anchor.

Day 7 - Friday Moyenne Island - Mahe, Inter Island Quay

Short guiding around the island and time for swim. Beach BBQ on the island. This is a last opportunity for snorkelling and swimming. We leave Moyenne Island for Mahe's Victoria Port in the afternoon. Late afternoon, we reach the Inter island Quay, Mahe. Captain's Farewell Dinner with live music and dancing. Overnight in Mahe.

Day 8 - Saturday Mahe (Victoria)

The Small Cruise Ship Collection
www.small-cruise-ships.com

01432 507 280 (within UK)

info@small-cruise-ships.com | small-cruise-ships.com



The Small Cruise Ship Collection

www.small-cruise-ships.com

small-cruise-ships.com

info@small-cruise-ships.com

Disembarkation 9:00 to 10.00 am

Please Note:

Itineraries can be changed at the discretion of the Vessel's Captain in case of adverse weather conditions - winds of 6/7 beaufort or more depending on the vessel - on port authorities not allowing a vessel to leave port or in case of other extraordinary conditions.



The Small Cruise Ship Collection

www.small-cruise-ships.com

01432 507 280 (within UK)

info@small-cruise-ships.com | small-cruise-ships.com

The Small Cruise Ship Collection

www.small-cruise-ships.com

small-cruise-ships.com

info@small-cruise-ships.com

YOUR SHIP: PEGASUS

YOUR SHIP: Pegasus

VESSEL TYPE:

LENGTH:

PASSENGER CAPACITY:

BUILT/REFURBISHED:

The twin-hulled Pegasus, built in 1990, completely renovated in the winter of 2019 it accommodates up to 44 guests in a relaxed, congenial atmosphere. On board you will enjoy magnificent sea views as you stroll our 2,550 square feet or 240 m2 of open deck. You can relax with friends in the handsomely appointed lounge, browse in the well-stocked library or enjoy ocean-view dining in the convivial and spacious restaurant area. A platform on Pegasus stern enables you to swim when weather and anchorage conditions permit. Dining Room The dining room is located on the upper deck and is a spacious area surrounded with large windows, and can accommodate all clients in one seating. Enjoy our hospitality and our chef's superb creations, choosing from a wide variety of international and local dishes. Lounge Area Our friendly, elegant bar is one of the most popular spots on the ship and an ideal setting for personal moments. Talk with your old friends or make new ones over a refreshing drink. Outdoor Restaurant You can relax in the outdoor shaded restaurant on the aft of the Pegasos. Here you can enjoy ocean-view delightful meals al fresco, weather permitting. Sun Deck Bar & Lounge You can relax in the outdoor bar and lounge area on the top deck of the Pegasos.

Here you can enjoy your afternoons at sea, gazing at the passing scenery or mingling with fellow passengers while enjoying premium Cocktails from the



Seychelles bar.

The Small Cruise Ship Collection

www.small-cruise-ships.com

01432 507 280 (within UK)

info@small-cruise-ships.com | small-cruise-ships.com

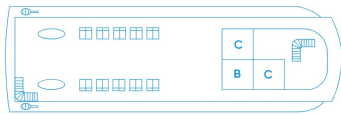
The Small Cruise Ship Collection

www.small-cruise-ships.com

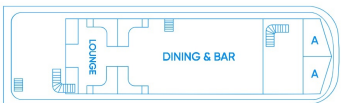
small-cruise-ships.com

info@small-cruise-ships.com

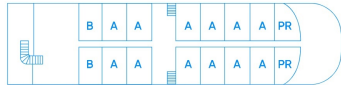
INSIDE YOUR SHIP



360°
Sun Deck



Infinity
Upper Deck

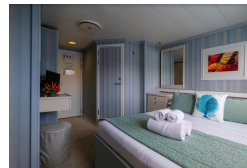


Riviera
Main Deck

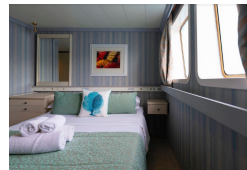


Oceans
Lower Deck

Category A



Category B



Category C



Category P





The Small Cruise Ship Collection

www.small-cruise-ships.com

small-cruise-ships.com

info@small-cruise-ships.com

PRICING

30-Nov-2024 to 07-Dec-2024

Category C	£2286 GBP pp
Category B	£2677 GBP pp
Category A	£3221 GBP pp
Category P	£3391 GBP pp

07-Dec-2024 to 14-Dec-2024

Category C	£1946 GBP pp
Category B	£2252 GBP pp
Category A	£2847 GBP pp
Category P	£3017 GBP pp

14-Dec-2024 to 21-Dec-2024

Category C	£1946 GBP pp
Category B	£2252 GBP pp
Category A	£2847 GBP pp
Category P	£3017 GBP pp

21-Dec-2024 to 28-Dec-2024

Category C	£2286 GBP pp
Category B	£2677 GBP pp
Category A	£3221 GBP pp
Category P	£3391 GBP pp

28-Dec-2024 to 04-Jan-2025

Category C	£2286 GBP pp
Category B	£2677 GBP pp
Category A	£3221 GBP pp
Category P	£3391 GBP pp

04-Jan-2025 to 11-Jan-2025

Category C	£1972 GBP pp
Category B	£2295 GBP pp
Category A	£2975 GBP pp
Category P	£3145 GBP pp

11-Jan-2025 to 18-Jan-2025

Category C	£1972 GBP pp
Category B	£2295 GBP pp
Category A	£2975 GBP pp
Category P	£3145 GBP pp

18-Jan-2025 to 25-Jan-2025

Category C	£1972 GBP pp
Category B	£2295 GBP pp
Category A	£2975 GBP pp
Category P	£3145 GBP pp

01-Feb-2025 to 08-Feb-2025

Category C	£2371 GBP pp
Category B	£2677 GBP pp
Category A	£3400 GBP pp
Category P	£3570 GBP pp



The Small Cruise Ship Collection

www.small-cruise-ships.com

small-cruise-ships.com

info@small-cruise-ships.com

PRICING

15-Feb-2025 to 22-Feb-2025

Category C	£2371 GBP pp
Category B	£2677 GBP pp
Category A	£3400 GBP pp
Category P	£3570 GBP pp

22-Feb-2025 to 01-Mar-2025

Category C	£2371 GBP pp
Category B	£2677 GBP pp
Category A	£3400 GBP pp
Category P	£3570 GBP pp

01-Mar-2025 to 08-Mar-2025

Category C	£2371 GBP pp
Category B	£2677 GBP pp
Category A	£3400 GBP pp
Category P	£3570 GBP pp

08-Mar-2025 to 15-Mar-2025

Category C	£2371 GBP pp
Category B	£2677 GBP pp
Category A	£3400 GBP pp
Category P	£3570 GBP pp

15-Mar-2025 to 22-Mar-2025

Category C	£2371 GBP pp
Category B	£2677 GBP pp
Category A	£3400 GBP pp
Category P	£3570 GBP pp

22-Mar-2025 to 29-Mar-2025

Category C	£2371 GBP pp
Category B	£2677 GBP pp
Category A	£3400 GBP pp
Category P	£3570 GBP pp

29-Mar-2025 to 05-Apr-2025

Category C	£2371 GBP pp
Category B	£2677 GBP pp
Category A	£3400 GBP pp
Category P	£3570 GBP pp

05-Apr-2025 to 12-Apr-2025

Category C	£2371 GBP pp
Category B	£2677 GBP pp
Category A	£3400 GBP pp
Category P	£3570 GBP pp

12-Apr-2025 to 19-Apr-2025

Category C	£2371 GBP pp
Category B	£2677 GBP pp
Category A	£3400 GBP pp
Category P	£3570 GBP pp



The Small Cruise Ship Collection

www.small-cruise-ships.com

small-cruise-ships.com

info@small-cruise-ships.com

PRICING

19-Apr-2025 to 26-Apr-2025

Category C	£2371 GBP pp
Category B	£2677 GBP pp
Category A	£3400 GBP pp
Category P	£3570 GBP pp

31-May-2025 to 07-Jun-2025

Category C	£2371 GBP pp
Category B	£2677 GBP pp
Category A	£3400 GBP pp
Category P	£3570 GBP pp

07-Jun-2025 to 14-Jun-2025

Category C	£2371 GBP pp
Category B	£2677 GBP pp
Category A	£3400 GBP pp
Category P	£3570 GBP pp

14-Jun-2025 to 21-Jun-2025

Category C	£2371 GBP pp
Category B	£2677 GBP pp
Category A	£3400 GBP pp
Category P	£3570 GBP pp

21-Jun-2025 to 28-Jun-2025

Category C	£2371 GBP pp
Category B	£2677 GBP pp
Category A	£3400 GBP pp
Category P	£3570 GBP pp

28-Jun-2025 to 05-Jul-2025

Category C	£2371 GBP pp
Category B	£2677 GBP pp
Category A	£3400 GBP pp
Category P	£3570 GBP pp

05-Jul-2025 to 12-Jul-2025

Category C	£2371 GBP pp
Category B	£2677 GBP pp
Category A	£3400 GBP pp
Category P	£3570 GBP pp

12-Jul-2025 to 19-Jul-2025

Category C	£1972 GBP pp
Category B	£2295 GBP pp
Category A	£2975 GBP pp
Category P	£3145 GBP pp

19-Jul-2025 to 26-Jul-2025

Category C	£1972 GBP pp
Category B	£2295 GBP pp
Category A	£2975 GBP pp
Category P	£3145 GBP pp



The Small Cruise Ship Collection

www.small-cruise-ships.com

small-cruise-ships.com

info@small-cruise-ships.com

PRICING

26-Jul-2025 to 02-Aug-2025

Category C	£1972 GBP pp
Category B	£2295 GBP pp
Category A	£2975 GBP pp
Category P	£3145 GBP pp

02-Aug-2025 to 09-Aug-2025

Category C	£1972 GBP pp
Category B	£2295 GBP pp
Category A	£2975 GBP pp
Category P	£3145 GBP pp

09-Aug-2025 to 16-Aug-2025

Category C	£1972 GBP pp
Category B	£2295 GBP pp
Category A	£2975 GBP pp
Category P	£3145 GBP pp

16-Aug-2025 to 23-Aug-2025

Category C	£1972 GBP pp
Category B	£2295 GBP pp
Category A	£2975 GBP pp
Category P	£3145 GBP pp

23-Aug-2025 to 30-Aug-2025

Category C	£1972 GBP pp
Category B	£2295 GBP pp
Category A	£2975 GBP pp
Category P	£3145 GBP pp

30-Aug-2025 to 06-Sep-2025

Category C	£2371 GBP pp
Category B	£2677 GBP pp
Category A	£3400 GBP pp
Category P	£3570 GBP pp

06-Sep-2025 to 13-Sep-2025

Category C	£2371 GBP pp
Category B	£2677 GBP pp
Category A	£3400 GBP pp
Category P	£3570 GBP pp

13-Sep-2025 to 20-Sep-2025

Category C	£2371 GBP pp
Category B	£2677 GBP pp
Category A	£3400 GBP pp
Category P	£3570 GBP pp

20-Sep-2025 to 27-Sep-2025

Category C	£2371 GBP pp
Category B	£2677 GBP pp
Category A	£3400 GBP pp
Category P	£3570 GBP pp



The Small Cruise Ship Collection

www.small-cruise-ships.com

small-cruise-ships.com

info@small-cruise-ships.com

PRICING

27-Sep-2025 to 04-Oct-2025

Category C	£2371 GBP pp
Category B	£2677 GBP pp
Category A	£3400 GBP pp
Category P	£3570 GBP pp

04-Oct-2025 to 11-Oct-2025

Category C	£2371 GBP pp
Category B	£2677 GBP pp
Category A	£3400 GBP pp
Category P	£3570 GBP pp

11-Oct-2025 to 18-Oct-2025

Category C	£2371 GBP pp
Category B	£2677 GBP pp
Category A	£3400 GBP pp
Category P	£3570 GBP pp

18-Oct-2025 to 25-Oct-2025

Category C	£2371 GBP pp
Category B	£2677 GBP pp
Category A	£3400 GBP pp
Category P	£3570 GBP pp

25-Oct-2025 to 01-Nov-2025

Category C	£2371 GBP pp
Category B	£2677 GBP pp
Category A	£3400 GBP pp
Category P	£3570 GBP pp

01-Nov-2025 to 08-Nov-2025

Category C	£2371 GBP pp
Category B	£2677 GBP pp
Category A	£3400 GBP pp
Category P	£3570 GBP pp

08-Nov-2025 to 15-Nov-2025

Category C	£2371 GBP pp
Category B	£2677 GBP pp
Category A	£3400 GBP pp
Category P	£3570 GBP pp

15-Nov-2025 to 22-Nov-2025

Category C	£2371 GBP pp
Category B	£2677 GBP pp
Category A	£3400 GBP pp
Category P	£3570 GBP pp

22-Nov-2025 to 29-Nov-2025

Category C	£2371 GBP pp
Category B	£2677 GBP pp
Category A	£3400 GBP pp
Category P	£3570 GBP pp



The Small Cruise Ship Collection

www.small-cruise-ships.com

small-cruise-ships.com

info@small-cruise-ships.com

PRICING

29-Nov-2025 to 06-Dec-2025

Category C	£2371 GBP pp
Category B	£2677 GBP pp
Category A	£3400 GBP pp
Category P	£3570 GBP pp

Category C	£2371 GBP pp
Category B	£2677 GBP pp
Category A	£3400 GBP pp
Category P	£3570 GBP pp

06-Dec-2025 to 13-Dec-2025

Category C	£1972 GBP pp
Category B	£2295 GBP pp
Category A	£2975 GBP pp
Category P	£3145 GBP pp

ADDITIONAL CHARGES:

Port Charges. From 395 EUR pp

13-Dec-2025 to 20-Dec-2025

Category C	£1972 GBP pp
Category B	£2295 GBP pp
Category A	£2975 GBP pp
Category P	£3145 GBP pp

20-Dec-2025 to 27-Dec-2025

Category C	£2371 GBP pp
Category B	£2677 GBP pp
Category A	£3400 GBP pp
Category P	£3570 GBP pp

27-Dec-2025 to 03-Jan-2026