



The Small Cruise
Ship Collection

www.small-cruise-ships.com



small-cruise-ships.com

info@small-cruise-ships.com

CIRCUMNAVIGATION OF NEW BRITAIN ISLAND - PAPUA NEW GUINEA LUXURY CRUISE

Explore the caldera of Garove Island, dive into Kimbe Bay's marine biodiversity, and discover the Tolai people's Duk-Duk society. Unearth World War II history in Rabaul, witness the Baining Fire Dance, and engage with locals on Duke of York and Tami Islands. Marvel at Jacquinot Bay's landscapes, swim in warm tropical waters, and visit remote picturesque islands. Our expert expedition team adds insights into history, culture, and biodiversity. This expedition is a seamless blend of luxury and discovery.



ITINERARY

DAY 1 Embarkation | Madang, Papua New Guinea

Madang Township was once known as the "prettiest town in the South Pacific". Its peninsula setting is a showplace of parks, waterways, luxuriant shade trees and sparkling tropical islands. The diverse geographical nature of Madang province is reflected in the 170 different languages that are spoken. This diversity is showcased in the Madang festival with its colourful displays of "sing sings" performed by numerous cultural groups from across

The Small Cruise
Ship Collection

www.small-cruise-ships.com

01432 507 280 (within UK)

info@small-cruise-ships.com | small-cruise-ships.com



The Small Cruise Ship Collection

www.small-cruise-ships.com



small-cruise-ships.com

info@small-cruise-ships.com

the Madang Province.

PASPALEY PEARL will be alongside in Madang.

DAY 2 Cape Gloucester. West New Britain Province, Papua New Guinea.

Lying on the northern peninsula at the west end of the island of New Britain is the seldom visited location of Cape Gloucester. The Peninsula is densely vegetated with thick rainforest, and the extinct Mount Talawe volcano creates a spectacular backdrop to the south. On the eastern flank of Talawe lie the four overlapping volcanic cones of the active Langila Volcano. Langila is one of the most active volcanoes in the Bismark archipelago. Several uninhabited picture postcard islands lie just offshore, providing the ideal location for swimming and snorkelling in the warm tropical waters of the Bismarck Sea.

DAY 3 Witu Islands. West New Britain Province, Papua New Guinea.

The Witu, or Vitu Islands are volcanic ocean peaks fringed by coral reefs located in the Bismarck Sea off the north coast of New Britain Island. They were once the chief copra centre of Papua New Guinea, today cocoa is now the main crop harvested. The largest island, Garove or Big Witu is a volcanic caldera where the southern rim has collapsed, creating a spectacular entrance. The main village of Garove is nestled inside this scenic natural harbour.

DAY 4 Kimbe Bay. West New Britain Province, Papua New Guinea.

Kimbe Bay is at the heart of the Coral Triangle and is considered one of the world's most diverse ocean environments, with everything from shallow seagrass beds and mangroves to deep seamounts. It is an important biodiversity hotspot, home to more than 60 percent of the coral species of the entire Indo-Pacific region. Above the water, black volcanic beaches provide a unique and dramatic contrast to the lush greenery of the surrounding forests. The volcanic landscapes create spectacular scenery and a rich flora that adds to the region's appeal.

DAY 5 Ataliklikun Bay. East New Britain Province, Papua New Guinea.

Ataliklikun Bay is home to the indigenous Tolai, who are believed to have migrated to the Gazelle Peninsula relatively recently, displacing the Baining people who were subsequently driven westwards. Whilst the Tolai people almost universally identify as Christians, old beliefs and traditions still persist including the secret Duk-Duk society. The society has religious, political and social objectives, representing a form of law and order through its presiding spirits. Duk-Duk only appeared with the full moon. Justice was executed, fines extorted, taboos, feasts, taxes and all tribal matters arranged by the Duk-Duk members, wearing masks or chalk on their faces.



The Small Cruise Ship Collection

www.small-cruise-ships.com

01432 507 280 (within UK)

info@small-cruise-ships.com | small-cruise-ships.com



The Small Cruise Ship Collection

www.small-cruise-ships.com



small-cruise-ships.com

info@small-cruise-ships.com

DAY 6 Rabaul. East New Britain Province, Papua New Guinea.

Set at the eastern end of the island of New Britain, the tropical port town of Rabaul has always been famous for its spectacular setting. Nestled beside Simpson Harbour, the township is surrounded by six volcanoes, one of which, Mt Tavurvur, is still active today. The most recent major volcanic eruption was in September 1994 when Tavurvur and Vulcan covered much of Rabaul and surrounding villages with volcanic ash. This eruption saw the growth of the nearby coastal town of Kokopo which has now become the administrative and tourism centre for Rabaul.

DAY 7 Duke of York Islands. East New Britain Province, Papua New Guinea.

Located in the St George's Channel between New Britain and New Ireland, the Duke of York islands comprise 13 rarely visited islands totalling 58 square kilometres in area. The first European to site the islands and give them their name was the British navigator Philip Carteret, in 1767. In the 1870s, a German trading station was opened at Balanawang Harbour, and the area's first Methodist mission was established in 1880.

DAY 8 Jacquinot Bay. East New Britain Province, Papua New Guinea.

Jacquinot Bay lies on the south coast of the island of New Britain and is surrounded by the densely forested central mountain range that dominates the southern part of the island. Prior to World War II there were several small villages and localities around the bay, including copra plantations at Palmalmal and Cutarp. It was used as a logistics and support base during the New Britain Campaign of World War II after being captured by an Allied amphibious operation undertaken on 4 November 1944.

DAY 10 Tami Islands, Morobe Province, Papua New Guinea

The Tami Islands (Kalal, Wanam & Idjan) are a small group of uplifted coral atolls, with two main villages on the two larger islands and many smaller reefs and cays. In the centre is a beautiful, crystal clear blue lagoon with abundant marine life and stunning coral formations. The seldom-visited islands are located off the coast not far from the town of Finschaffien. Tami Islanders are renowned artisans and are most famous for their intricately decorated bowls.

DAY 11 Disembarkation | Madang, Papua New Guinea

Madang Township was once known as the "prettiest town in the South Pacific". Its peninsula setting is a showplace of parks, waterways, luxuriant shade trees and sparkling tropical islands.



The Small Cruise Ship Collection

www.small-cruise-ships.com

01432 507 280 (within UK)

info@small-cruise-ships.com | small-cruise-ships.com



The Small Cruise Ship Collection

www.small-cruise-ships.com



small-cruise-ships.com

info@small-cruise-ships.com

The diverse geographical nature of Madang province is reflected in the 170 different languages that are spoken. This diversity is showcased in the Madang festival with its colourful displays of "sing sings" performed by numerous cultural groups from across the Madang Province.

PASPALLEY PEARL will be alongside in Madang and disembarkation will commence after breakfast.

Please note:

Itineraries are subject to change.



The Small Cruise
Ship Collection

www.small-cruise-ships.com

01432 507 280 (within UK)

info@small-cruise-ships.com | small-cruise-ships.com



The Small Cruise
Ship Collection

www.small-cruise-ships.com



small-cruise-ships.com

info@small-cruise-ships.com

YOUR SHIP: PASPALEY PEARL

YOUR SHIP: Paspaley Pearl

VESSEL TYPE:

LENGTH:

PASSENGER CAPACITY:

BUILT/REFURBISHED:

PASPALEY PEARL marks a milestone in the development of boutique expedition travel, offering a benchmark-setting standard of excellence in the Asia Pacific region. As a modern boutique expedition vessel in the Kimberley featuring private balconies, we have the ability of reaching exotic destinations previously inaccessible by larger vessels. You're invited to ignite your sense of discovery, all whilst travelling in comfort and safety that has been designed to create the smallest possible footprint, with a philosophy of empowering local people and creating ambassadors for the destinations visited. Designed to feel like your home away from home Marrying PASPALEY's heritage of over 80 years in the Kimberley and Northern Australia with PONANT's 35-year history of luxury expedition travel, PASPALEY PEARL emerges as the embodiment of comfort and adventure. Featuring 15 staterooms and suites and hosting a maximum of 30 guests per voyage, PASPALEY PEARL emerges as the newest and only boutique expedition motor yacht in the Kimberley with private balconies. The perfect place to relax while exploring **_Main Dining, Lounge and Bar_** Nestled on the Ocean Deck is our main dining area, lounge, and bar. As our skilled chefs craft your locally-inspired dinner, take a moment for a

pre-dinner drink before being spoiled with the finest produce Australia has to offer. If you're interested in exploring some of PASPALEY's exquisite offerings, you'll be delighted by their showcase of the world's most beautiful pearls, available for purchase as a cherished memento of your time on board. **_Outdoor Dining, Lounge and Bar_** When journeying through the tropics, immersing yourself in the outdoors becomes essential. Indulge in breakfast and lunch daily within a relaxed yet refined setting. With two expansive dining tables and abundant lounges, relish the idea of dining amidst the natural surroundings you explore. Craving a refreshing drink after a day of exploration? Our friendly staff at the Outdoor Bar have you covered. The Outdoor Lounge doubles as the perfect space for afternoon briefings with your expedition team, ensuring you receive all the information needed for the following day's adventure. **_Sun Deck Lounge and Jacuzzi_** Bask in the sunshine on the Sun Deck, furnished with sun beds, lounges, and an 8-person jacuzzi. Whether you prefer reading a book under the shelter of the protective shade cloth or engaging in conversations with newfound friends, the Sun Deck promises a haven of pure relaxation. **_Sunset Lounge_** Located ahead of the bridge, you can savour panoramic views rivaling those of the captain at the Sunset Lounge. Order a drink from one of the bars downstairs and relax as you witness some of the most breathtaking sunsets you've

The Small Cruise
Ship Collection

www.small-cruise-ships.com

01432 507 280 (within UK)

info@small-cruise-ships.com | small-cruise-ships.com



The Small Cruise Ship Collection

www.small-cruise-ships.com



small-cruise-ships.com

info@small-cruise-ships.com



ever seen.



The Small Cruise Ship Collection

www.small-cruise-ships.com

01432 507 280 (within UK)

info@small-cruise-ships.com | small-cruise-ships.com



The Small Cruise Ship Collection

www.small-cruise-ships.com



small-cruise-ships.com

info@small-cruise-ships.com

INSIDE YOUR SHIP

Horizon Suite



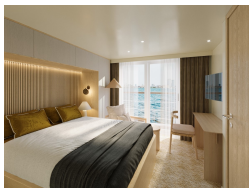
Ocean Stateroom



Ocean Twin Stateroom



Pearl Suite





The Small Cruise Ship Collection

www.small-cruise-ships.com



small-cruise-ships.com

info@small-cruise-ships.com

PRICING

29-Oct-2025 to 08-Nov-2025

Horizon Suite	£12237 GBP pp
Ocean Stateroom	£10197 GBP pp
Pearl Suite	£14787 GBP pp
Ocean Twin Stateroom	£9432 GBP pp

18-Nov-2025 to 28-Nov-2025

Ocean Stateroom	£10197 GBP pp
Pearl Suite	£14787 GBP pp
Ocean Twin Stateroom	£9432 GBP pp
Horizon Suite	£12237 GBP pp