

The Small Cruise Ship Collection

www.small-cruise-ships.com



small-cruise-ships.com

info@small-cruise-ships.com

A CIRCUMNAVIGATION OF ICELAND WITH NG ENDURANCE

Experience the geological extremes on one of the world's youngest islands. Walk on lava fields and ice sheets. Feel the wondrous power of hot springs and waterfalls. Cruise into the Westfjords and spot nesting sea birds. Hike along magnificent stretches of coast. Icelandic experts and musicians add insight and energy to the expedition.



ITINERARY

DAY 1 Reykjavik, Iceland / Embark Ship

Arrive in Reykjavik, the world's northernmost capital, which lies only a fraction below the Arctic Circle and receives just four hours of sunlight in winter and 22 in summer. Have a panoramic overview of the Old Town, including Hallgrímskirkja Cathedral with its 210-foot tower, and perhaps shed some light on Nordic culture at the National Museum, with its Viking treasures, artifacts, and unusual whalebone carvings on display. Embark National Geographic Resolution. Meals Included: Lunch, Dinner

DAY 2 Flatey Island

The Small Cruise Ship Collection

www.small-cruise-ships.com

01432 507 280 (within UK)

info@small-cruise-ships.com | small-cruise-ships.com



The Small Cruise Ship Collection

www.small-cruise-ships.com

small-cruise-ships.com

info@small-cruise-ships.com

Explore Iceland's western frontier, visiting Flatey Island, a trading post for many centuries. Walk around the charming little hamlet that grew here, and take a Zodiac cruise along the coast. Meals Included: Breakfast, Lunch, Dinner

DAY 3 Northwestern Iceland

Explore the beautiful and peaceful Westfjords region of Iceland. Perhaps take a hike to a remote waterfall or a Zodiac cruise alongside stunning scenery. Enter Ísafjarðardjup and land at Vigur Island to visit the Eider Farm and learn about the down cleaning process. Meals Included: Breakfast, Lunch, Dinner

DAY 4 Ísafjörður

Located in the Westfjords, Ísafjörður is surrounded by water on three sides, sculpted by glaciers. Explore by Zodiac and on shore, hike for up-close views of stunning landscapes and to photograph flowering plants. Meals Included: Breakfast, Lunch, Dinner

DAY 5 Siglufjörður and Akureyri

Siglufjörður was the center of Iceland's once-thriving herring industry. We stop by the Herring Museum for a salting demonstration and a tasting. Continue to picturesque Akureyri, backed by snow-capped mountains. Explore the old town, with its beautifully maintained period houses, or visit the botanical garden. Meals Included: Breakfast, Lunch, Dinner

DAY 6 Lake Mývatn and Húsavík

Begin the day by visiting an unforgettable sight: Goðafoss, the waterfall of the gods. Next, drive to Mývatn, the most geologically active area in Iceland to experience world-class field geology. See the bizarre mud pools at Hverarond, so hot they actually bubble, and the explosion crater at Viti in the Krafla geothermal area. After lunch ashore, meet the ship in Húsavík, and watch for whales as we sail north to the land of the midnight sun. Take Zodiacs ashore to the tiny island of Grimsey, which lies exactly on the Arctic Circle. Here we celebrate being officially in the Arctic, in the company of nesting arctic terns, fulmars, and puffins in burrows, all bathing, courting, and fishing—another wonderful photo op. Meals Included: Breakfast, Lunch, Dinner

DAY 7 At Sea / Skálanes

Spend the morning at sea as we round the rugged northeast corner of Iceland. This afternoon, visit Skálanes Nature Reserve outside of Seydisfjörður to observe the fascinating ongoing archaeological excavations, the peninsula's bird cliffs, and abundant wildflowers. Meals Included: Breakfast, Lunch, Dinner

DAY 8 Djúpivogur

Dock in Djúpivogur and drive down the coast to explore the vast Vatnajökull icecap and the deep blue icebergs of the large ice lagoon of Jokulsárlón. Alternatively, go by 4x4 vehicle to visit some of the secluded valleys and remote waterfalls in the

The Small Cruise Ship Collection

www.small-cruise-ships.com

01432 507 280 (within UK)

info@small-cruise-ships.com | small-cruise-ships.com



small-cruise-ships.com

info@small-cruise-ships.com

countryside around Djupivogur. A third option is visiting a farm to meet a family living in rural Iceland. Meals Included: Breakfast, Lunch, Dinner

DAY 9 Islands of Heimaey & Surtsey, Westman Islands

The Westman Islands were formed by undersea volcanoes between 5,000 and 10,000 years ago and are among the youngest of the world's archipelagos. In 1963, the world witnessed on film the birth of its newest island, Surtsey--a UNESCO World Heritage site--which we see as we cruise past the coast. In 1973, Heimaey was threatened by lava flows that nearly closed off its harbor. We visit the crater, where the earth is still hot, for amazing views of areas that had been engulfed by lava. Meals Included: Breakfast, Lunch, Dinner

DAY 10 Reykjavík / Disembark

Today, disembark in Reykjavik and take a morning excursion. After lunch, transfer to the airport for flights home. Meals Included: Breakfast, Lunch, Dinner

Please Note:

Itineraries are subject to change.



The Small Cruise Ship Collection

www.small-cruise-ships.com

small-cruise-ships.com

info@small-cruise-ships.com

YOUR SHIP: NATIONAL GEOGRAPHIC ENDURANCE

YOUR SHIP:	National Geographic Endurance
VESSEL TYPE:	Expedition Ship
LENGTH:	
PASSENGER CAPACITY:	126
BUILT/REFURBISHED:	2018

A next-generation expedition ship, purpose-built for polar navigation. National Geographic Endurance is a next-generation expedition ship, purpose-built for polar navigation. A fully stabilized, highly strengthened, ice-class Polar Code PC5 (Category A) vessel, it is designed to navigate polar passages year-round, and safely explore uncharted waters, while providing exceptional comfort. Its patented X-BOW® is key to its design; its powerful wave-slicing action provides an extremely smooth ride in even adverse conditions, and even reduces spray on deck, for superior observation. She carries a full suite of expedition tools and offers a variety of experience-enhancing amenities. The luxury of comfort on expedition National Geographic Endurance comfortably accommodates 126 guests in 69 outside-facing cabins. Cabins are efficiently designed, with sizes range from the 140-square-foot solo cabin to the 430-square-foot category 7 suite. Fifty-three of the 69 cabins, including all 12 of the solo cabins, will feature small balconies with floor-to-ceiling sliding doors that bring in the spectacular views and ample natural light. Comfort & convenience in every room Every cabin has two portholes, a large window or balcony, and temperature controls. Bathrooms are modern and stocked

with botanically inspired hair products, soap, and shower gel, plus a hairdryer. Cabins are equipped with expedition command centers with tablets and USB/mobile device docking, TVs, Wi-Fi connections, and hair dryers. Dining: Food served aboard is fresh, local, and delicious, and sourced from suppliers who share our values of sustainable use whenever possible. Meals aboard are almost always served in the dining room, located aft of the lounge deck. When weather conditions allow, lighter fare may be served on the observation deck. There is no assigned seating and our dining room accommodates the entire expedition community in a single seating. During meals your expedition leader, naturalists, and any guest speakers aboard will join you. Public Areas: Two restaurants, a Chef's Table for small group dining, Observation Lounge with bar, gym, Wellness area, infinity-style outdoor hot tubs, library, main lounge with full service bar, 24-hour beverage, state-of-the-art facilities for films, slideshows and presentations, and a photo workshop area; plus, an expedition base with lockers for expedition gear, and an "open bridge" for access to our captain, officers and the art of navigation. Meals: Two restaurants, featuring local, sustainable choices and unassigned seating for flexible, inclusive dining; plus a Chef's table for intimate, small group dining. Main restaurant has 270° views, and the Observation deck restaurant features lighter, made-to-order fare. Cabins: All cabins face outside with large windows, private facilities and climate controls. 53 cabins have balconies. Cabins are equipped with expedition command centers with tablets and USB/mobile device docking, TVs, Wi-Fi connections, and hair dryers. Expedition Tools: Zodiac landing craft, kayaks,

The Small Cruise Ship Collection

www.small-cruise-ships.com

01432 507 280 (within UK)

info@small-cruise-ships.com | small-cruise-ships.com

The background image shows a group of people in a zodiac boat on a sea filled with icebergs. The boat is in the foreground, and the people are looking towards the camera. The background features large icebergs and a cloudy sky. A blue banner is overlaid on the top left of the image.

The Small Cruise Ship Collection

www.small-cruise-ships.com

small-cruise-ships.com

info@small-cruise-ships.com

snowshoes, cross-country skis, undersea specialist operating a remotely Operated Vehicle (ROV) and underwater video camera for unique access to polar marine world, hydrophone, aerial remote-controlled camera and video microscope. Special Features: A full-time doctor, undersea specialist, National Geographic photographer, Lindblad-National Geographic certified photo instructor and video chronicler, an internet cafe and laundry. Wellness: The vessel is staffed by our wellness specialists and features a glass-enclosed yoga studio, gym, treatment rooms and spa relax area, and high- and low-heat saunas with ocean views. Expedition Landing Craft: Key to our operation is our fleet of expedition landing craft, which we use to land in places that would otherwise be inaccessible. With 8 of these boats and two loading stations used every time we disembark, we're able to transfer guests off the ship quickly, so you can be out on adventures, not idly waiting. The expedition landing craft we use are 19 feet long, powered by four-stroke outboard engines, and are capable of comfortably carrying 10-12 people. They are widely recognized as the safest and most versatile small boats afloat. Remotely Operated Vehicle: Capable of reaching 1,000 feet, far beyond the range of any Scuba diver, the ROV allows you to literally view parts of the undersea that are as unexplored as the moon. Chances are you, like many of our guests, will be struck by how surprisingly colorful undersea life is in these unlikely places. And this glimpse may fundamentally change how you view the ocean. Kayaks: National Geographic Endurance will be equipped with a fleet of kayaks large enough to ensure everyone who wants to can paddle at every opportunity. Consequently, prior kayaking experience isn't necessary--many of our guests have their first kayaking experience in extraordinary locations. Our custom-designed floating platform lets us deploy kayaks from

the ship, or any location we want--including far from shore. Kayakers are usually free to explore where they want within boundaries set by the undersea specialist and officer of the watch. Underwater camera: Our undersea specialist will dive often during your expedition, even in Alaska, with cold-water gear, to shoot high-definition, Cousteau-like footage of the deep. Colorful nudibranchs, swimming, plant-like crinoids, and mysterious fish with antifreeze blood that thrive in the frigid sea will give you an entirely new appreciation of the marine environment. Video microscope: Naturalists will use the video microscope to help explain all elements of the environment, including tiny organisms that are the building block of the marine ecosystem. Spellbinding live views of krill at 80x magnification fills the high-definition screens in the lounge with vivid detail, and fills every onlooker with a sense of wonder at the importance of otherwise unobservable creatures. Hydrophone: This underwater microphone is deployed to listen to the vocalizations of marine mammals. Real time transmissions of their eerie, haunting sounds can be broadcast through the ship or recorded for later playback. Few experiences in nature are as captivating as watching humpback whales feed close to the ship as their vocalizations play through the ship's PA system. Electronic charts: An electronic chart showing the ship's location, course, and speed is almost always on display in the lounge. Open bridge: You'll find our captains are engaged, knowledgeable members of your expedition who are eager to share their passion with you. Venture's open bridge features comfortable spaces to sit, enjoy the view, drink your morning coffee, or simply chat with the officers. Snorkeling gear & wetsuits: On warm weather itineraries where there will be snorkeling, you'll select a mask, snorkel, fins, and wetsuit that remain yours for the duration of the expedition. There's no need

The Small Cruise Ship Collection
www.small-cruise-ships.com

01432 507 280 (within UK)

info@small-cruise-ships.com | small-cruise-ships.com



 The Small Cruise
Ship Collection
www.small-cruise-ships.com

small-cruise-ships.com

info@small-cruise-ships.com

to pack and tote your own gear, although guests who prefer to are welcome to bring



their own.

The Small Cruise Ship Collection

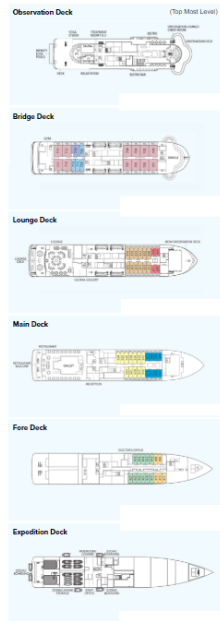
www.small-cruise-ships.com

small-cruise-ships.com

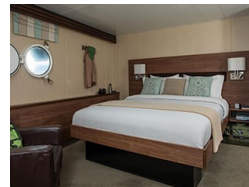
info@small-cruise-ships.com

INSIDE YOUR SHIP

National Geographic Endurance



Category 1



Category 1. From



Category 2

Category 2



Category 3

Category 4

Category 4

Category 5

Category 6

Category 6

Category 7

Category SA (solo)

Category SB (solo)

Suite A Solo

The Small Cruise Ship Collection

www.small-cruise-ships.com



small-cruise-ships.com

info@small-cruise-ships.com

PRICING

01-Jun-2025 to 10-Jun-2025

Category 4	£10189 GBP pp
Category 2	£8562 GBP pp
Category 6	£13249 GBP pp
Category 1	£7267 GBP pp
Category SA (solo)	£10664 GBP pp
Category 5	£11056 GBP pp
Category SB (solo)	£11133 GBP pp
Category 7	£15340 GBP pp
Category 3	£8930 GBP pp

15-Jun-2025 to 24-Jun-2025

Category 2	£8654 GBP pp
Category 3	£9021 GBP pp
Category 1	£7338 GBP pp
Category 4	£10296 GBP pp
Category 5	£11174 GBP pp
Category SB (solo)	£11245 GBP pp
Category 6	£13382 GBP pp
Category SA (solo)	£10771 GBP pp
Category 7	£15498 GBP pp

29-Jun-2025 to 08-Jul-2025

Category SB (solo)	£11245 GBP pp
Category 2	£8654 GBP pp
Category 4	£10296 GBP pp
Category 1	£7338 GBP pp
Category SA (solo)	£10771 GBP pp
Category 3	£9021 GBP pp
Category 6	£13382 GBP pp
Category 7	£15498 GBP pp
Category 5	£11174 GBP pp

08-Jul-2025 to 17-Jul-2025

Category 3	£18648 GBP pp
Category 1	£11271 GBP pp
Category 4	£20931 GBP pp
Suite B Solo	£19629 GBP pp
Suite A Solo	£17467 GBP pp
Category 2	£16036 GBP pp
Category 5	£24036 GBP pp
Category 7	£22536 GBP pp

The Small Cruise Ship Collection

www.small-cruise-ships.com



small-cruise-ships.com

info@small-cruise-ships.com

PRICING

09-Jul-2025 to 18-Jul-2025

Category 2	£12653 GBP pp
Suite B Solo	£22067 GBP pp
Category 3	£14713 GBP pp
Suite A Solo	£17783 GBP pp
Category 6	£21817 GBP pp
Category 7	£23715 GBP pp
Category 1	£11857 GBP pp
Category 4	£16513 GBP pp
Category 5	£18966 GBP pp

13-Jul-2025 to 22-Jul-2025

Category 2	£8654 GBP pp
Category SB (solo)	£11245 GBP pp
Category 6	£13382 GBP pp
Category 1	£7338 GBP pp
Category 3	£9021 GBP pp
Category 4	£10296 GBP pp
Category 5	£11174 GBP pp
Category SA (solo)	£10771 GBP pp
Category 7	£15498 GBP pp

18-Jul-2025 to 27-Jul-2025

Category 2	£12393 GBP pp
Category 7	£23225 GBP pp
Category 4	£16182 GBP pp
Category 1	£11612 GBP pp
Suite A Solo	£17421 GBP pp
Category 6	£21369 GBP pp
Category 3	£14407 GBP pp
Category 5	£18569 GBP pp
Suite B Solo	£21613 GBP pp

30-Jun-2026 to 09-Jul-2026

Category 1. From	£14099 GBP pp
------------------	---------------

09-Jul-2026 to 18-Jul-2026

Category 1. From	£13815 GBP pp
------------------	---------------