

## The Small Cruise Ship Collection

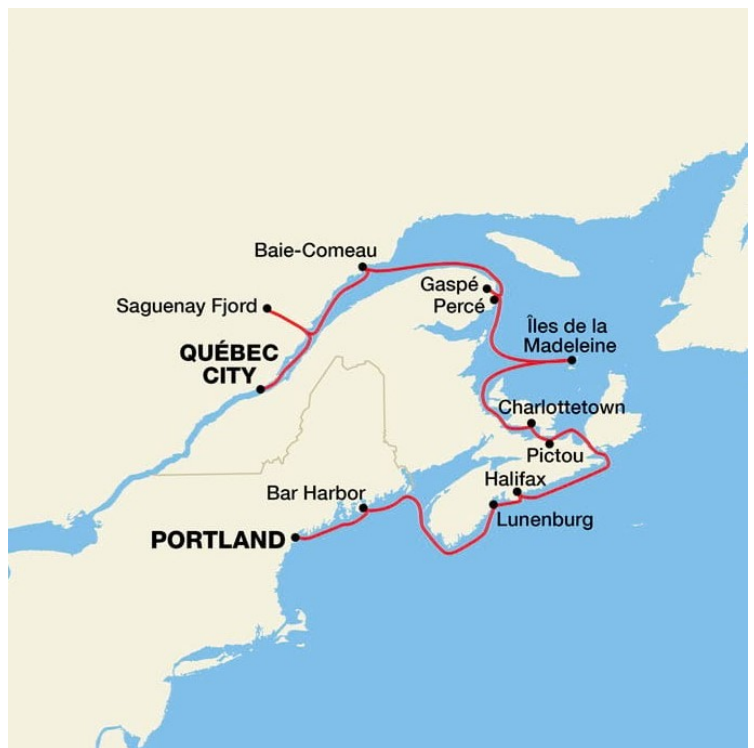
www.small-cruise-ships.com

small-cruise-ships.com

info@small-cruise-ships.com

## CANADA AND NEW ENGLAND FALL FOLIAGE CRUISE

On this captivating 10-night journey, discover the most sought-after Canadian locations, as well as many of our favorite colorful destinations along the New England coast. From the comfort of your private balcony, on our fall color cruises, witness the rich reds, bright oranges, and golden yellows that flood the shores during this vibrant season. Explore intriguing ports-of-call with guided shore excursions that take you to the quaint cobblestone streets of Quebec City. Visit one of the most popular whale-watching spots in Canada at Saguenay Fjord, and gaze upon the red sandstone cliffs of Prince Edward Island during the peak fall foliage cruise season. Throughout your journey, enjoy exquisite locally-sourced and regionally inspired cuisine as you cruise to New England and Canada.



### ITINERARY

Day 1 Québec City, QC

Quebec City is nestled beside the majestic St. Lawrence River, where enchanting old stone houses cozy up to great religious institutions built from the same stone. The old city is a sheer delight for history buffs with a diversity of architectural styles reminiscent of those in England and France. Walk along the streets of Old Quebec, and enjoy the magnificent churches,

The Small Cruise Ship Collection

www.small-cruise-ships.com

01432 507 280 (within UK)

info@small-cruise-ships.com | small-cruise-ships.com



## The Small Cruise Ship Collection

[www.small-cruise-ships.com](http://www.small-cruise-ships.com)

[small-cruise-ships.com](http://small-cruise-ships.com)

[info@small-cruise-ships.com](mailto:info@small-cruise-ships.com)

fragrant gardens, and chic boutiques.

Day 2 Saguenay, QC

The villages along the Saguenay Fjord can be reached by road, but the best way to experience this magnificent waterway is by boat. One of the most popular whale watching spots is where the St. Lawrence River meets the Saguenay Fjord. The thriving natural conditions here support a permanent colony of a thousand or more whales. Beautiful views of the length of the fjord are found at Cap Trinite, a cliff that rises above the channel with a 33-foot statue of the Virgin Mary surveying the scenery from the lowest ledge.

Day 3 Baie-Comeau, QC

Located in the Manicouagana Peninsula on the St. Lawrence Estuary, Baie-Comeau is rich in sandy beaches with picturesque views of the archipelago of islands that are inhabited by harbor seals and various species of seabirds. Explore its natural wonders and fall in love with the magnificent backdrop of clear waters and the wild beauty of boreal forests.

Day 4 Gaspé, QC / Percé, QC

The deep water port of Gaspé is notable for having been the first stop of Jacques Cartier to claim the land for France which is why it is often referred to as the "Birthplace of Canada." The town is proud to have a magnificent stretch of water in Gaspé Bay, which is considered to be the second largest natural bay in the

world. Visit the picturesque Percé, a charming village which also borders Percé Rock, the dominant natural feature of the area.

Day 5 Îles de la Madeleine, QC

Spend the day in this remote archipelago on some of the most spectacular secluded beaches in North America. Located in the geographical center of the Gulf of St. Lawrence, the Isles are made up of about a dozen islands, six of which are linked by sand dunes. Highlights of the area include beautiful red cliffs, rolling hills, 180 miles of honey-colored sand, and the brightly colored fishermen's houses which dot the landscape.

Day 6 Charlottetown, PEI

The pastoral Prince Edward Island is known for its world famous lush golf courses and sandy beaches. Explore Green Gables, an old farmhouse immortalized in Lucy Maud Montgomery's cherished 1908 novel, *Anne of Green Gables*, high among the list of favorite places to visit. The true architectural jewel of downtown Charlottetown is the majestic St. Dunstan's Basilica. Adorned by three copper spires visible virtually anywhere in the city, the church adds to the Victorian splendor of the downtown core.

Day 7 Pictou, NS

The Town of Pictou, located on the beautiful Northumberland Shore of Nova Scotia, is renowned as the "Birthplace of New Scotland," since it was here that the first wave of Scottish

The Small Cruise Ship Collection

[www.small-cruise-ships.com](http://www.small-cruise-ships.com)

01432 507 280 (within UK)

[info@small-cruise-ships.com](mailto:info@small-cruise-ships.com) | [small-cruise-ships.com](http://small-cruise-ships.com)





## The Small Cruise Ship Collection

[www.small-cruise-ships.com](http://www.small-cruise-ships.com)

[small-cruise-ships.com](http://small-cruise-ships.com)

[info@small-cruise-ships.com](mailto:info@small-cruise-ships.com)

immigrants landed in 1773. Led by our local guide, explore Pictou's 18th-century style homes on tree-lined streets and be welcomed by its warm and charming community.

### Day 8 Halifax, NS

Nova Scotia's capital is a historic community that still shows a striking resemblance to the Halifax of the 1800s when it was a key naval station in the British Empire. The Halifax Citadel, a military bastion that has been standing for over 250 years, was restored and is still active. The Maritime Museum of the Atlantic on the waterfront celebrates the colorful history of Samuel Cunard, a Nova Scotia native who became a Canadian shipping magnate and founded a successful steamship company. A highlight of the city is Spring Garden Road, a lively neighborhood with intriguing boutiques in a subtly Bohemian setting.

### Day 9 Lunenburg, NS

Lunenburg was the first British Colonial settlement in Nova Scotia and remains one of its most historic and charming villages. Many of the downtown buildings possess a distinctive style with ornamental brackets and towers which complement their brightly painted designs. A growing number of art galleries and crafts shops also make for a rewarding browsing experience. The picturesque Lunenburg waterfront is the home of the world-class Fisheries Museum of the Atlantic, with aquarium exhibits and a replica of Bluenose, Canada's most-recognized and most-storied ship.

### Day 10 Bar Harbor, ME

Nestled on the east side of Mt. Desert Island, Bar Harbor has enchanted visitors throughout history with its incredible natural beauty as well as its vibrant downtown village. Its majestic mountains and stunning seascapes have long inspired artists and writers and beckoned many others who come for reflection, relaxation, or outdoor exploration. In the early 20th century, wealthy visionaries donated the area now known as Acadia National Park, recognized for its breathtaking vistas and abundant wildlife.

Select cruises will visit Eastport, ME rather than Bar Harbor, ME.

### Day 11 Portland, ME

After a refreshing and relaxing week of cruising, enjoy a day exploring the city of Portland. This charming seaside city is located in the heart of Casco Bay and offers something for everyone. Visit one of Portland's many museums and art galleries or peruse the specialty boutiques in the city's celebrated Old Port.

Please note:

Itineraries are subject to change.

The Small Cruise Ship Collection

[www.small-cruise-ships.com](http://www.small-cruise-ships.com)

01432 507 280 (within UK)

[info@small-cruise-ships.com](mailto:info@small-cruise-ships.com) | [small-cruise-ships.com](http://small-cruise-ships.com)



## The Small Cruise Ship Collection

[www.small-cruise-ships.com](http://www.small-cruise-ships.com)



[small-cruise-ships.com](http://small-cruise-ships.com)

[info@small-cruise-ships.com](mailto:info@small-cruise-ships.com)

### YOUR SHIP: PEARL MIST

<b>YOUR SHIP:</b>	<b>Pearl Mist</b>
<b>VESSEL TYPE:</b>	<b>Small Ship</b>
<b>LENGTH:</b>	<b>105 m</b>
<b>PASSENGER CAPACITY:</b>	<b>210</b>
<b>BUILT/REFURBISHED:</b>	<b>2014</b>

The Pearl Mist offers the ultimate cruise experience with just 100 over-sized, luxurious staterooms, all with private balconies. Let our attentive crew cater to your wishes and world-class chefs create culinary delights with a local flavor. Visit the most exciting destinations in the world in perfect comfort with Pearl Seas Cruises. Points of Distinction Spacious, Luxurious Staterooms - ALL with Private Balconies Magnificent Open-Seating Dining Room with Panoramic View Exceptional Traditional and Regional Cuisine Prepared by Acclaimed Chefs Six Onboard Lounges, Spa, Theater, Library and Lecture Room Elevator Access to All Decks & Onboard Medical Services Flat Screen Satellite TVs, DVD players, and Wi-Fi throughout the ship



**01432 507 280** (within UK)

[info@small-cruise-ships.com](mailto:info@small-cruise-ships.com) | [small-cruise-ships.com](http://small-cruise-ships.com)



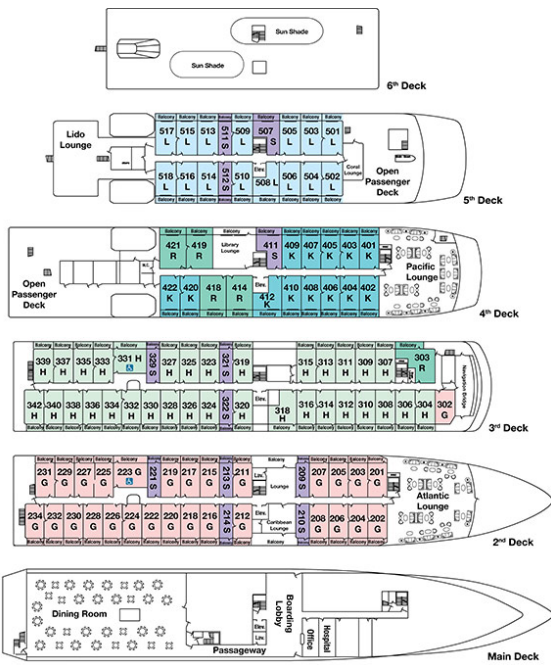
# The Small Cruise Ship Collection

www.small-cruise-ships.com

small-cruise-ships.com

info@small-cruise-ships.com

## INSIDE YOUR SHIP



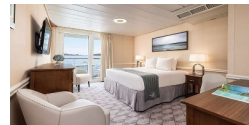
Category G



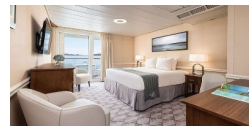
Category H



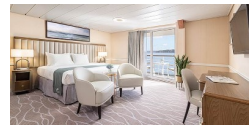
Category K



Category L



Category R



Category SGB





# The Small Cruise Ship Collection

www.small-cruise-ships.com



small-cruise-ships.com

info@small-cruise-ships.com

## PRICING

### 04-Oct-2025 to 14-Oct-2025

Category L	£9132 GBP pp
Category R	£11265 GBP pp
Category SGB	£10910 GBP pp
Category H	£7507 GBP pp
Category K	£8739 GBP pp
Category G	£7122 GBP pp

### 14-Oct-2025 to 24-Oct-2025

Category R	£11265 GBP pp
Category L	£9225 GBP pp
Category SGB	£11065 GBP pp
Category H	£7615 GBP pp
Category K	£8845 GBP pp
Category G	£7309 GBP pp

### 24-Oct-2025 to 03-Nov-2025

Category SGB	£10910 GBP pp
Category L	£9132 GBP pp
Category H	£7507 GBP pp
Category K	£8739 GBP pp
Category G	£7122 GBP pp
Category R	£11265 GBP pp

### 03-Oct-2026 to 13-Oct-2026

Category R	£11265 GBP pp
Category SGB	£10910 GBP pp
Category L	£9132 GBP pp
Category G	£7122 GBP pp
Category K	£8739 GBP pp
Category H	£7507 GBP pp

### 13-Oct-2026 to 23-Oct-2026

Category L	£9132 GBP pp
Category SGB	£10910 GBP pp
Category R	£11265 GBP pp
Category H	£7507 GBP pp
Category G	£7122 GBP pp
Category K	£8739 GBP pp

### 23-Oct-2026 to 02-Nov-2026

Category SGB	£10910 GBP pp
Category H	£7507 GBP pp
Category K	£8739 GBP pp
Category G	£7122 GBP pp
Category L	£9132 GBP pp
Category R	£11265 GBP pp