

The Small Cruise Ship Collection

www.small-cruise-ships.com

small-cruise-ships.com

info@small-cruise-ships.com

BOUNTY OF THE SOUTHERN OCEAN - SOUTH AUSTRALIA CRUISE

Join us on our inaugural 'Bounty of the Southern Ocean' expedition celebrating the culinary landscape of South Australian and Victoria's pristine coastline. Along the way enjoy the freshest seafoods, native ingredients and organic produce accompanied by world class wines and artisanal spirits. Enjoy a farm-to-plate adventure as we explore these bountiful shores. Discover the rich flavours of wild ocean farmed abalone on Kangaroo Island and freshly caught Australian lobster in the quaint fishing port of Robe. Learn about the myriad of culinary and medicinal uses of fungi and sample native indigenous bush ingredients in the wild. Meet passionate local producers, growers and distillers and share their handicrafts and stories. Connect with nature as you enjoy a leisurely circumnavigation around the remote seal colony of Lady Julia Percy Island and take in the spectacle of a sunset sail by of the 12 Apostles. Our expert guides will lead the way on this uniquely Australian adventure at sea onboard Coral Adventurer. Signature Event - Enjoy a special 'Tastes of the Southern Ocean' dinner onboard Coral Adventurer in the historic fishing township of Port McDonnell (Ngaranga) hosted by preeminent regional chef Jamie Carter, and showcasing the best of South Australian premium wines including pairings from Eden Valley, Barossa, Adelaide Hills and McLaren Vale.



ITINERARY

DAY 1: DEPART ADELAIDE (YARTAPUULTI)

Arrive at Adelaide: Outer Harbour (Berth 1) for boarding at 4:00pm, with time to settle into your stateroom before our 5:00pm departure. Settle into your cabin and familiarise yourself with the ship before your first delicious dinner as we cruise towards Kangaroo Island.

KANGAROO ISLAND (KARTA PINTINGGA) & EMU BAY

This morning we land at Emu Bay, located on the northern edge of Kangaroo Island, known to be one of the most expansive white sand beaches on the island. Meet with researchers from Australia's foremost sustainable aquaculture venture to learn about their industry and innovations, before tasting some of the delicious local abalone. We will also learn of some of the greatest trials of the agriculturist on Kangaroo Island and their difficulty in transporting produce to market before the jetty was opened in 1918, and weather permitting enjoy the opportunity for a swim from the beach. After lunch onboard we will return to

The Small Cruise Ship Collection

www.small-cruise-ships.com

01432 507 280 (within UK)

info@small-cruise-ships.com | small-cruise-ships.com



The Small Cruise Ship Collection

www.small-cruise-ships.com

small-cruise-ships.com

info@small-cruise-ships.com

the island at Antechamber Bay to enjoy uninterrupted views across the Backstairs Passage, separating Kangaroo Island and the mainland of South Australia. Here we will experience some of the best produce Kangaroo Island has to offer, accompanied by wines at Dudley Wines Cellar Door.

ROBE (BUNGANDITJ)

Tucked away on South Australia's rugged Limestone Coast, Robe has a remarkable history. The town overlooks picturesque Guichen Bay, first charted in 1802 by French explorer Nicolas Baudin, as part of a major scientific expedition approved by Napoleon Bonaparte. It was named after Governor Frederick Holt Robe, who inspected the area in January 1846 and chose Guichen Bay as the preferred location for a port. The Limestone Coast is an epicurean delight, providing some of the most exotic culinary flavours and ingredients available to contemporary chefs. Southern rock lobsters have a unique taste that comes from colder waters and the clean and pristine environment they grow up in. Today we will have the opportunity to taste this fresh southern rock lobsters, accompanied by a South Australian Prosecco. After our rock lobster tasting we will join Feresh Pizarro, an indigenous Costa Rican who has spent the last 17 years in Australia building her professional life in the world of Sustainable Architecture and Entrepreneurial Education. Feresh is fully committed to promoting, growing, and connecting people to the life-changing world of fungi, and will enlighten us with a masterclass on mushrooms and their myriad of uses for both medicinal and culinary. This will be an opportunity to understand the mushrooms that surround us and discern the 'good' from the 'bad'. This afternoon we will sample some of the craft beers on offer at a boutique wood fired brewery, which is a unique brewing method in today's craft beer brewing boom and

sample a selection of regional produce. If there's time, wander the architecturally historic ways of Robe and visit Robe's Customs House, or take a walk along the coastal headland trail to the Robe Obelisk.

PORT MACDONNELL (NGARANGA) - SIGNATURE DINNER

Port MacDonnell, originally known as Ngaranga is the southernmost town in South Australia. In the 1880s, it was one of Australia's busiest ports, shipping large quantities of wheat and wool to Europe. The port was, however, exposed to the weather and the site of many shipwrecks. This morning we will take a sunrise walk to Cape Northumberland, offering spectacular wave eroded formations and one of the one of the most spectacular uninterrupted views of the sun rising and setting over the Southern Ocean as South Australia's most southerly point. This morning light and rugged eroded landscape also offers the opportunity to spot a penguin! Morning views also offer uninterrupted views of Mount Schank, Mount Gambier and Cape Douglas. This evening we will enjoy a Signature Dinner onboard Coral Adventurer prepared by preeminent South Australian Chef Jamie Carter. Amble through South Australian hamlets renowned for food production along the considered 'Taste of South Australian' menu with matching South Australian wines.

LADY JULIA PERCY ISLAND (DHINMAR) & PORT FAIRY (GUNDITJMARA)

Today we cross the border to Victoria. This morning, enjoy a cruise around Lady Julia Percy Island, which is 2 kilometers in length by 1 kilometer wide, surrounded by cliffs, rock platforms and reefs. This island is the home to an important seal breeding colony. In the early 19th century whalers and seal hunters used this coast regularly, with a long history of human exploitation, though it is now protected as a State Faunal Reserve. After our

The Small Cruise Ship Collection
www.small-cruise-ships.com

01432 507 280 (within UK)

info@small-cruise-ships.com | small-cruise-ships.com



The Small Cruise Ship Collection

www.small-cruise-ships.com

small-cruise-ships.com

info@small-cruise-ships.com

circumnavigation of Lady Julia Percy Island we will travel to close by Port Fairy. Here, learn about indigenous bush foods and the entrepreneurship that aims to embed the use of sustainable bush foods across the Australian food landscape. There will also be the opportunity to take a guided stroll amongst the heritage of Port Fairy and stop in at an artisan chocolatier to taste the richness and unique flavours of handcrafted chocolates.

PORT CAMPBELL & TWELVE APOSTLES

Today we arrive into Port Campbell, a coastal town in Victoria just west of the Twelve Apostles, with steep, rocky cliffs and pristine sandy white beaches in bays at the base of many of these cliffs. We will experience a food trail tour for lovers of local gourmet produce. Go behind the scenes to meet the farmers, makers, and creators, explore the farms, and taste all that is on offer in the hinterland region. Learn the processes involved in a variety of cheeses complete with a tasting at Apostle Whey Cheese, a genuine paddock to plate operation with a number of major cheese awards. Sample local whiskey at a hinterland distillery, spending time with the distillers learning about their craft. This afternoon, treat yourself to your favourite flavour of freshly made ice cream at the local Port Campbell ice-creamery. Make sure to leave some room as this afternoon we will sample homemade fudge and discover how Farm Fudge, a local small business, is catering to the demands of Australia's sweet tooth. This evening soak in the spectacular view of the sun setting as we leisurely pass the 12 Apostles and head towards Apollo Bay.

APOLLO BAY (KRAMBRUK)

First inhabited by the Gadubanud, or King Parrot people – who were hunter-gatherer people who lived off the land – Apollo Bay is situated in the foothills of the Otway Ranges on the Great

Ocean Road, surrounded by lush rainforest and towering mountains. This morning, learn the secrets to great coffee with a coffee masterclass including morning tea. We will then enjoy a sample of the best seasonal local produce – exploring the tastes of the region. You will have the opportunity to choose between three tasting options, including beer, wine or gin tasting. Experience the essence of Apollo Bay's regional produce at its finest with beer tasting, where handcrafted brewing process utilizes pure rainwater from the lush rainforests, exceptional wines with insights into the winery's history, or taste boutique gins that pay homage to Apollo Bay's nautical heritage and native ingredients. Spend the afternoon exploring the subtle art of tea blending hosted by a local artisan, onboard Coral Adventurer, with a focus on utilising organic locally sourced ingredients of the finest quality.

PHILLIP ISLAND (MILLOWL) & RHYLL

Phillip Island, named after the first Governor of NSW Arthur Phillip, is well known for its tourism, agriculture, and fishing industries. This morning, explore the boardwalks of the area with your local guide, surrounded by the internationally important RAMSAR protected ecosystem vital to ocean food production and health – mangroves. This area is thriving with wildlife and birdlife, including a variety of honeyeaters, parrots, thornbills, pardalotes, silvereyes, and other bush birds. After exploring the Reserve, wander through a world-renowned habitat for migratory wader birds and other wildlife species at peaceful Rhyll Inlet. You'll find boardwalks that loop through the tranquil mangroves, saltmarsh, and mudflats, where you'll spot spoonbills, oyster catchers, herons, egrets, cormorants, short, tailed shearwater, and a range of international waders rarely seen in Australia. Sample the best of Phillip Island as we visit Rhyll Brewery and

The Small Cruise Ship Collection
www.small-cruise-ships.com

01432 507 280 (within UK)

info@small-cruise-ships.com | small-cruise-ships.com



The Small Cruise Ship Collection

www.small-cruise-ships.com

small-cruise-ships.com

info@small-cruise-ships.com

Distillery, one of the newest breweries and distilleries on Phillip Island, sampling innovative brews employing innovative methods of production. Listen to the stories of one of Australia's first chefs, Jude Mayall, on how to utilise the unique bush and wild food flavours endemic to Australia and enjoy a lunch that utilises seasonal wild produce. Taste award winning premium cool climate wines produced in a vineyard that overlooks the Bay of the Western Port with views of Swan Inlet.

DAY 9: ARRIVE MELBOURNE

This morning, farewell Coral Adventurer, crew, and new-found friends as we arrive into the Port of Melbourne at 7:00am, to disembark at 8:00am. There will be post cruise transfers to Melbourne CBD Hotels and Melbourne Airport.

Please Note:

This itinerary is an indication of the destinations we visit and activities on offer. Throughout the expedition we may make changes to the itinerary as necessary to maximise your expeditionary experience. Allowances may be made for seasonal variations, weather, tidal conditions, and any other event that may affect the operation of the vessel. Coral Expeditions suggests that you do not arrive on the day of embarkation or depart on the day of disembarkation due to any changes that may occur in scheduling.

The Small Cruise Ship Collection

www.small-cruise-ships.com

01432 507 280 (within UK)

info@small-cruise-ships.com | small-cruise-ships.com



The Small Cruise Ship Collection

www.small-cruise-ships.com

small-cruise-ships.com

info@small-cruise-ships.com

YOUR SHIP: CORAL ADVENTURER

YOUR SHIP: Coral Adventurer

VESSEL TYPE:

LENGTH:

PASSENGER CAPACITY:

BUILT/REFURBISHED:

Launched in 2018 with her maiden voyage in 2019, Coral Adventurer has been designed and built to take you closer to unspoilt vistas in comfort, style and safety. A culmination of two years of design and three decades of passion for expedition cruising. BIGGER IS NOT BETTER At a time when cruise ships get larger and glitzier, we remain stubbornly compact and intimate. Our ships are designed to take you to unspoilt destinations not accessible to large ships. We want you to have the luxury of space, dine with whom you please, or find your quiet corner on deck. So Coral Adventurer has just 60 spacious cabins. This preserves the intimate atmosphere we are known for without sacrificing the stability and comfort of a true ocean going vessel. BUILT FOR DISCOVERY The Coral Adventurer features the trademark dual 'Xplorer' tenders cradled on a hydraulic platform slung off the back of the ship, enabling our guests to go ashore in comfort and ease. The shallow draft of the ship enables us to go closer to shore than larger ships. Together with a renowned expedition team, this new ship will offer the most advanced expedition capabilities of any small ship afloat. BUILT FOR COMFORT With active stabilisers dampening sea motion, mostly balcony cabins, and interiors designed with the colours and

textures of tropical Queensland, the Coral Adventurer is a comfortable ship. She features promenade decks, generous communal areas that accommodate all guests, a passenger elevator, and an open kitchen where you can observe our chefs whip up small batch cuisine from locally sourced ingredients. BUILT FOR PERSONAL SERVICE The Coral Adventurer will continue a proud tradition of Australian flagged vessels with friendly and professional Australian crew. The onboard atmosphere remains refreshingly informal and intimate. Take your seat at our bridge lounge, chat with the captain at your leisure or accompany our chefs on a market tour. Food and wine features Single seating dining area with communal 'wine table' finished with Australian stone; serving buffet breakfast and lunch, and multi-course table d'hote dinners Showcase galley visible to guests for fresh small-batch cuisine featuring Australian produce Multiple indoor and outdoor bars, including the Explorer bar on the sundeck for sunset drinks with 180 degree views Curated wine cellar featuring modestly priced boutique wines for daily drinking and exceptional vintage Australian reds. Guest comfort All outside guest cabins with en-suite bathrooms; majority have private balcony Active stabilisers to dampen sea motion Gym equipped with elliptical trainers and treadmills Passenger elevator Wi-Fi available in all

The Small Cruise Ship Collection
www.small-cruise-ships.com

01432 507 280 (within UK)

info@small-cruise-ships.com | small-cruise-ships.com



The Small Cruise Ship Collection

www.small-cruise-ships.com

small-cruise-ships.com

info@small-cruise-ships.com



guest areas



The Small Cruise Ship Collection

www.small-cruise-ships.com

01432 507 280 (within UK)

info@small-cruise-ships.com | small-cruise-ships.com

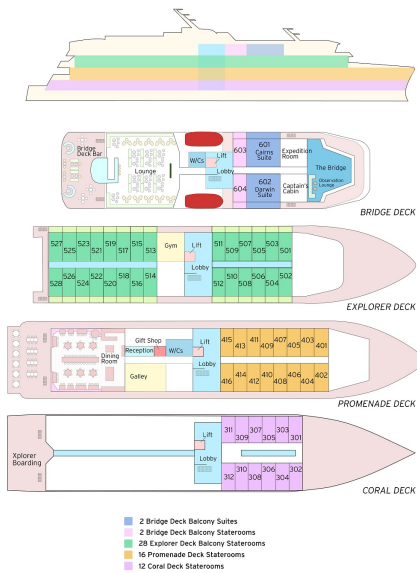
The Small Cruise Ship Collection

www.small-cruise-ships.com

small-cruise-ships.com

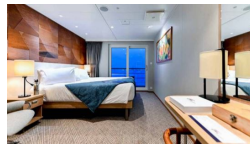
info@small-cruise-ships.com

INSIDE YOUR SHIP



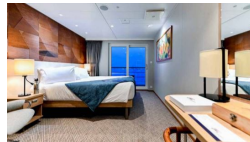
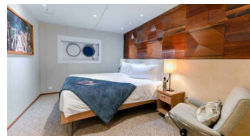
BRIDGE DECK BALCONY STATEROOM

BRIDGE DECK BALCONY SUITE

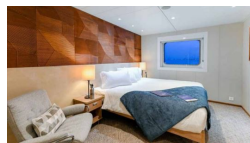


CORAL DECK STATEROOM

EXPLORER DECK BALCONY STATEROOM



PROMENADE DECK STATEROOM





The Small Cruise Ship Collection

www.small-cruise-ships.com

small-cruise-ships.com

info@small-cruise-ships.com

PRICING

01-Dec-2024 to 09-Dec-2024

EXPLORER DECK BALCONY STATEROOM	£5967 GBP pp
BRIDGE DECK BALCONY SUITE	£8415 GBP pp
BRIDGE DECK BALCONY STATEROOM	£6553 GBP pp
PROMENADE DECK STATEROOM	£4488 GBP pp
CORAL DECK STATEROOM	£3723 GBP pp



The Small Cruise Ship Collection
www.small-cruise-ships.com

01432 507 280 (within UK)

info@small-cruise-ships.com | small-cruise-ships.com