



## The Small Cruise Ship Collection

[www.small-cruise-ships.com](http://www.small-cruise-ships.com)

[small-cruise-ships.com](http://small-cruise-ships.com)

[info@small-cruise-ships.com](mailto:info@small-cruise-ships.com)

### THE BEST OF JAPAN WITH LE SOLEAL

Ponant invites you on a timeless journey around the fascinating and surprising Empire of the Rising Sun, where unbridled modernism and ancestral traditions form a delightful blend, where the history of the samurai rubs shoulders with the delicateness of the geisha, and where the aromas of the tea plantations intermingle with the fragrances of cherry blossom. From bustling Osaka, set sail aboard Le Soleal for 9 days to explore the heart of this country with a thousand traditions. Following the currents, clinging to the shores of the Seto Inland Sea, Le Soleal will sail west. At the foot of a tropical forest burgeoning with life, Tamano stands proudly in the middle of this enchanting environment. A significant commercial centre during the Edo era, it still bears the traces of traditional Japanese life in the 18th century, as the particular architecture of the town demonstrates. Hiroshima does not seek to elicit strong emotions. Opposite the Inland Sea, only the Hiroshima Peace Memorial bears witness to past events in the city known as a "City of Peace". It is resolutely future looking and you will be able to appreciate its modern and cosmopolitan atmosphere, the hustle and bustle of its lively streets and the tranquillity of its natural settings, such as the splendid Shukkei-en, the city's historic gardens. The jagged coastlines of the captivating Miyajima Island, also known as Itsukushima, come into view, and the vermilion Torii of the emblematic Shinto Shrine of Itsukushima, a UNESCO World Heritage Site, unfolds before you in a lush forest setting. Time here seems stuck in the feudal era: the frenetic energy and modernity of the large Japanese metropolises make way for striking serenity and tranquillity, and hundreds of deer wander between its spiritual

and architectural treasures. Following a port of call filled with history on the island of Uwajima, Le Soleal will set sail for one of Japan's most singular places, Kagoshima. Facing the captivating Mount Sakurajima, one of the most active volcanoes in Asia, and bordered by the majestic Kinko Bay, where the rays of sun bathe the surface of the ocean in colour, the former feudal city shelters the remains of this opulent era, as evidenced by the ruins of the castle of the Shimazu clan and its samurai. Further north, Nagasaki remains in the world's imagination as the symbol of nuclear horror. Fortunately, in the same way as Hiroshima, the city has become one of the archipelago's most peaceful towns as well as one of its most attractive. The warm and cosmopolitan city unveils its many riches throughout its narrow streets: the Oura Catholic Church and its gardens, the Suwa Shrine, the sumptuous Buddhist temples... Then you will sail to South Korea, a small peninsula that juts out into the Sea of Japan, and discover Busan, South Korea's second city. A place of great contrasts, Busan offers a spectacular view over its port, as well as over the ancient district of Chalgachi. At the whim of the trade winds in the Sea of Japan, Le Soleal will sail eastbound for the charming feudal city of Sakaiminato. Here you will get a real glimpse into medieval Japan and allow yourself to fall under the spell of the samurai residences edging the picturesque little streets of the old city. For the last stage of this enchanted Japanese interlude, you will disembark in Maizuru, a captivating city nestled deep in a sound scattered with wild and

The Small Cruise Ship Collection

[www.small-cruise-ships.com](http://www.small-cruise-ships.com)

01432 507 280 (within UK)

[info@small-cruise-ships.com](mailto:info@small-cruise-ships.com) | [small-cruise-ships.com](http://small-cruise-ships.com)

# The Small Cruise Ship Collection

www.small-cruise-ships.com

small-cruise-ships.com

info@small-cruise-ships.com



## Day 2 TAMANO

Located on the island of Honshu, hugging the banks of the Seto Inland Sea, Tamano is a popular destination thanks to its sun-drenched climate. Upon arrival, marvel at the way in which the city has been built along the coast at the foot of a deep, dark forest. In the area surrounding Tamano, stroll down the streets of Kurashiki, known as the 'white-walled city' in a nod to the pretty façades of the houses that line the streets of this ancient Edo-period trading town. Another major regional attraction is the Seto Ohashi bridge. Its 12.5 kilometres make it the world's longest double-decker bridge.

## Day 3 HIROSHIMA & MIYAJIMA ISLAND

Visiting Hiroshima is a moving experience. The town spreads along Honshu Island, along the inside coasts of Seto. While firmly focused on the future, Hiroshima doesn't forget its past, and a visit to the Peace Memorial Park and Genbaku Dome is a must. You'll enjoy the city's modern, cosmopolitan atmosphere and effervescent nightlife just as much as the peaceful stillness of its natural parkland areas such as splendid Shukkei-en, the town's historic garden. At the heart of the Inland Sea, Miyajima, the "island sanctuary" will reveal its treasures. In the background you will see the Shinto Grand Sanctuary, whose entrance is guarded by a magnificent vermilion "Torii". Considered to be one of the most beautiful sites in the Japanese islands, you will be transported by the unique character and the serenity of this sacred site.

## Day 4 UWAJIMA

lush islets.

## ITINERARY

### Day 1 OSAKA

Like its big sister Tokyo, Osaka is the product of ancestral traditions and amazing technological innovations. And despite its size, its location on the Pacific Ocean give it a sense of serenity. The main historic landmark is the 16th century Osaka Castle, which stands proud in the midst of majestic skyscrapers. The lively streets of Dotomburi and the bizarre Shinsekai district attract thousands of locals and visitors. A multitude of restaurants offer menus full of regional specialities: takoyaki, made with octopus, and other succulent dishes such as kushikatsu kebabs.

The Small Cruise Ship Collection  
www.small-cruise-ships.com

01432 507 280 (within UK)

info@small-cruise-ships.com | small-cruise-ships.com



## The Small Cruise Ship Collection

[www.small-cruise-ships.com](http://www.small-cruise-ships.com)

[small-cruise-ships.com](http://small-cruise-ships.com)

[info@small-cruise-ships.com](mailto:info@small-cruise-ships.com)

Located on the west coast of Shikoku island, Uwajima will delight lovers of history and traditional customs. The magnificent Uwajima Castle was built in the 17th-century by the powerful Date clan and has a beautiful ornamental garden and bridge. The much-visited Taga Shrine is dedicated to fertility and is full of phalluses. As for eating, you must taste jakoten, a local delicacy based on fried fish.

### Day 5 KAGOSHIMA

The seaside city of Kagoshima, at the south of Kyushu Island, is best known for Sakurajima, an active volcano that faces Kinko Bay. A visit to this busy metropolis will remind you just how much the volcano is part of the inhabitants' everyday life: in the wake of the almost daily eruptions, a delicate layer of ash settles on everything. The top of a buried torii (traditional Japanese gate) measuring three metres that was 'swallowed up' by a giant lava flow in 1914 can still be seen. The power of nature will send a shiver down your spine.

### Day 6 NAGASAKI

Located on the north-west coast of Kyushu, Nagasaki will impress you by its rich heritage. Despite the destruction in 1945, you can visit several ancient sites, including the beautiful 19th-century Catholic Church of Oura and its garden, the sanctuary of Suwa Shrine or several Buddhist temples. A visit to the Atomic Bomb Museum gives you insight into the extent of the damage caused by the nuclear attack. Close by, a walk in

the Memorial Peace Park leads you to a collection of objets d'art offered as a gift from Japan to the world.

### Day 7 BUSAN

With around four million inhabitants, Busan is the second largest metropolis on South Korea, after Seoul. This dynamic harbour city, located in the south-east, surrounded by the warm waters of the Sea of Japan, benefits from a mild, pleasant climate. You'll find delightful simply to stroll around the lively streets and explore the city's outstanding cultural heritage of art galleries, museums, and Buddhist sites, such as the Haedong Yonggungsa temple, which elegantly sits on the waterfront. Rich too in magnificent beaches and superlative natural landscapes, Busan's peaceful atmosphere will win you over, as will its inhabitants, whom you'll have the pleasure of meeting.

### Day 8 SAKAIMINATO

Located on the south-west coast of Honshu Island, the busy fishing port of Sakaiminato celebrates the comic writer and artist Shigeru Mizuki, who was born here. As well as a museum a dedicated tourist route leads through streets and squares that feature 134 bronze statues representing his beloved characters. This isn't the only thing Sakaiminato has to offer; try some local seafood specialities and enjoy the stunning views of Mt Daisen and the Yumigahama peninsula.

### Day 9 MAIZURU

The Small Cruise Ship Collection

[www.small-cruise-ships.com](http://www.small-cruise-ships.com)

01432 507 280 (within UK)

[info@small-cruise-ships.com](mailto:info@small-cruise-ships.com) | [small-cruise-ships.com](http://small-cruise-ships.com)



The Small Cruise  
Ship Collection

[www.small-cruise-ships.com](http://www.small-cruise-ships.com)

[small-cruise-ships.com](http://small-cruise-ships.com)

[info@small-cruise-ships.com](mailto:info@small-cruise-ships.com)

Located on the western coast of Honshu island, in the province of Kyoto, the charming town of Maizuru boasts one of Japan's most exquisite closed bays. A climb to the observatory allows to appreciate the splendour of this inlet scattered with tiny wild islands. Visitors can also admire the treasures of traditional architecture by visiting the temple of Enryu-ji or the Tanabe-jo castle. The town also bears traces of a rich military past, which you can see in the old arsenals of the navy, red brick buildings that today house a museum.

Please Note:

Itineraries are subject to change.

The Small Cruise  
Ship Collection

[www.small-cruise-ships.com](http://www.small-cruise-ships.com)

**01432 507 280** (within UK)

[info@small-cruise-ships.com](mailto:info@small-cruise-ships.com) | [small-cruise-ships.com](http://small-cruise-ships.com)

## The Small Cruise Ship Collection

[www.small-cruise-ships.com](http://www.small-cruise-ships.com)

[small-cruise-ships.com](http://small-cruise-ships.com)

[info@small-cruise-ships.com](mailto:info@small-cruise-ships.com)

### YOUR SHIP: LE SOLEAL

**YOUR SHIP:** Le Soleal

**VESSEL TYPE:**

**LENGTH:**

**PASSENGER CAPACITY:**

**BUILT/REFURBISHED:**

Luxury Small Ship A sleek silhouette, a welcoming intimate atmosphere, and the same philosophy that has made her sister ships, L'Austral, Lyrial and Le Boreal, such a success. This magnificent yacht of only 132 staterooms and suites, all with balconies, has contemporary decor inspired by the luxury yachting world, with fluid lines and a modern colour scheme combining natural wood with shades of grey and white. White Corian counters in the lobby contrast with the warmth of leather to recall a boat's hull, while the central sculpture of enamelled pieces takes its inspiration from the sea. In the lounge bar, the carpet picks up a tennis stripe theme symbolising a certain idea of cruising, one synonymous with French elegance and a chic seaside spirit. Wheelchairs 3 specially adapted wheelchair cabins (Deck 3 = Superior cabin no. 307, no balcony, Deck 4 = Prestige Cabin no. 407 - with balcony and Deck 5 = Prestige Cabin no 509, with balcony) and lifts to all decks/areas. Read about our recent Ponant cruise to Antarctica Please click the following links to read more about Ponant and the other Ponant cruise ships.



The Small Cruise Ship Collection

[www.small-cruise-ships.com](http://www.small-cruise-ships.com)

01432 507 280 (within UK)

[info@small-cruise-ships.com](mailto:info@small-cruise-ships.com) | [small-cruise-ships.com](http://small-cruise-ships.com)

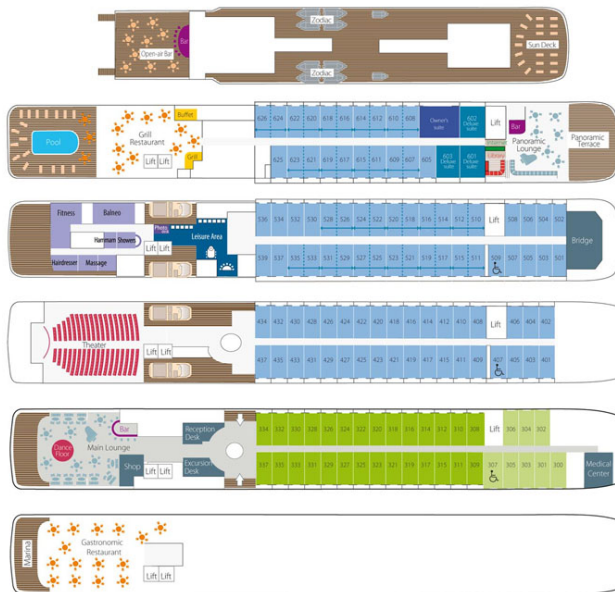
# The Small Cruise Ship Collection

www.small-cruise-ships.com

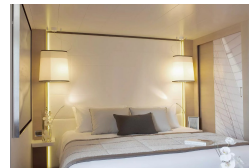
small-cruise-ships.com

info@small-cruise-ships.com

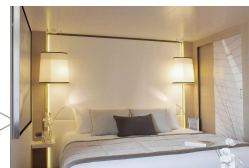
## INSIDE YOUR SHIP



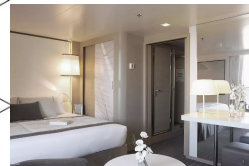
DeLuxe Stateroom - waitlist



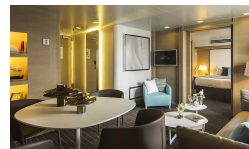
Deluxe Stateroom



Deluxe Suite



Owner's Suite



Prestige Stateroom - Deck 4 - waitlist

Prestige Stateroom - Deck 5

Prestige Stateroom - Deck 6

Prestige Suite - Deck 5

Prestige Suite - Deck 6

Superior Stateroom

The Small Cruise Ship Collection

www.small-cruise-ships.com

01432 507 280 (within UK)

info@small-cruise-ships.com | small-cruise-ships.com



# The Small Cruise Ship Collection

[www.small-cruise-ships.com](http://www.small-cruise-ships.com)

[small-cruise-ships.com](http://small-cruise-ships.com)

[info@small-cruise-ships.com](mailto:info@small-cruise-ships.com)

## PRICING

### 14-May-2025 to 22-May-2025

DeLuxe Stateroom - waitlist	£6936 GBP pp
Owner's Suite	£21800 GBP pp
Prestige Stateroom - Deck 4 - waitlist	£7741 GBP pp
Prestige Suite - Deck 5	£18000 GBP pp
Superior Stateroom	£6900 GBP pp
Prestige Stateroom - Deck 6	£9350 GBP pp
Prestige Stateroom - Deck 5	£8850 GBP pp
Deluxe Suite	£13190 GBP pp
Prestige Suite - Deck 6	£19000 GBP pp

### 16-Mar-2026 to 24-Mar-2026

Superior Stateroom	£5385 GBP pp
Prestige Deck 6 Suite	£14235 GBP pp
Prestige Deck 5 Suite	£13535 GBP pp
Prestige Deck 6	£7179 GBP pp
Prestige Deck 5	£6795 GBP pp
Prestige Deck 4	£6469 GBP pp
Deluxe Suite	£10005 GBP pp
Deluxe Stateroom	£5829 GBP pp

### ADDITIONAL CHARGES:

Port Taxes & Fees 590 AUD pp

The Small Cruise Ship Collection

[www.small-cruise-ships.com](http://www.small-cruise-ships.com)

01432 507 280 (within UK)

[info@small-cruise-ships.com](mailto:info@small-cruise-ships.com) | [small-cruise-ships.com](http://small-cruise-ships.com)