

# The Small Cruise Ship Collection

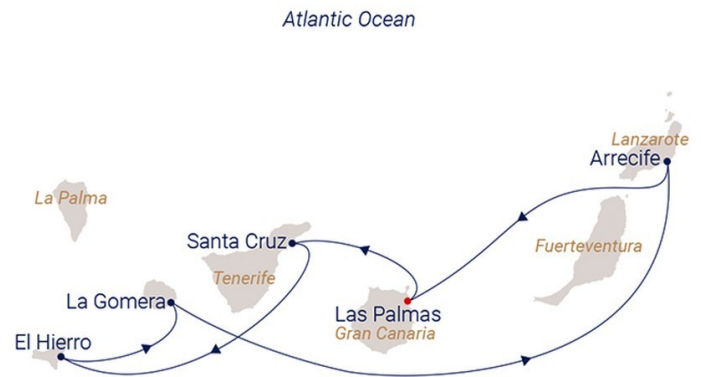
www.small-cruise-ships.com

small-cruise-ships.com

info@small-cruise-ships.com

## BEAUTIFUL GREENS OF THE CANARY ISLANDS - SAILING CRUISE

Embark on a luxurious voyage through the Canary Islands, beginning and ending in Las Palmas, Gran Canaria. This journey offers a unique blend of natural wonders, from the volcanic landscapes of Teide National Park in Tenerife to the tranquil, nature-focused island of El Hierro. Explore the cloud forests of La Gomera, where marine mammals thrive, and experience the contrasting black lava and green laurel forests. The trip also includes a visit to Lanzarote's striking lunar landscapes, providing a diverse and unforgettable exploration of these captivating islands.



### ITINERARY

Day 1 Las Palmas, Gran Canaria

Departure 10:00 pm

With its black volcano almost 6,561 feet high and endless white beaches along the coastline, the island of Gran Canaria displays a huge variety of landscapes. It's a "continent in miniature" with rugged rock formations, dense pine forests, dry valleys and reservoirs inland, lush vegetation in the north, shimmering dune

The Small Cruise Ship Collection

www.small-cruise-ships.com

01432 507 280 (within UK)

info@small-cruise-ships.com | small-cruise-ships.com



## The Small Cruise Ship Collection

[www.small-cruise-ships.com](http://www.small-cruise-ships.com)

[small-cruise-ships.com](http://small-cruise-ships.com)

[info@small-cruise-ships.com](mailto:info@small-cruise-ships.com)

landscapes in the south and weirdly shaped cliffs in the west. Almost half the island has been registered by UNESCO as a Biosphere Reserve. The capital, Las Palmas, is no less colorful, with its port and history stretching back 500 years. The showpiece of this historic old town is the magnificent Santa Ana Cathedral.

### Day 2 Santa Cruz, Tenerife

Arrival 8:00 am, Departure 1:30 pm

Santa Cruz is the perfect starting point if you want to discover Tenerife's diverse mix of beach, nature, and avant-garde culture. The capital and port city in the northeast of the island is not only decked out with historic buildings but also features a lively art scene and spectacular modern architecture by Calatrava or Herzog, and De Meuron. Santa Cruz is also not far from other highlights in the north. For example, the lively colonial town of La Laguna, with its impressive mansions, or quaint Taganana in the Agana Landscape Park, which has retained the charm of an old mountain village.

### Day 3 Puerto de la Estaca, El Hierro

Arrival 8:00 am, Departure 1:30 pm

Volcanic activity has created a wildly romantic and varied natural landscape. It's a land of black lava desert and strange rock formations with oddly shaped, wind-defying juniper trees in the south, orchards, vineyards, fig and almond groves in the north, lush green meadows and pastures in the high plateaus,

and perhaps the most beautiful pine forests in the archipelago. El Hierro, the smallest and newest of the Canary Islands, is almost completely edged with steeply sloping, rugged cliffs and the spray from the surging ocean. UNESCO has designated it a Biosphere Reserve.

### Day 4 San Sebastián, La Gomera

Arrival 8:00 am, Departure 7:00 pm

Many people consider La Gomera to be the most wildly romantic island in the Canaries. Rugged gorges, craggy hillsides, fertile valleys and evergreen cloud forests characterize the landscape. The Garajonay National Park, a UNESCO World Heritage Site, embraces the whole central mountain area and is an unusual little spot. Ancient bay trees, heather bushes as high as trees and tall ferns form a cloud forest where moss hangs from the trees and clings to gnarled branches - a truly mystical natural wonder that has existed for millions of years.

### Day 5 Day under full sails

Climbing the rigging, untying ropes, setting sails - today is all about sailing. Time to lean back and relax in the deck chair and watch the passionate crew hoisting the sails by hand.

### Day 6 Arrecife, Lanzarote

The Small Cruise Ship Collection

[www.small-cruise-ships.com](http://www.small-cruise-ships.com)

01432 507 280 (within UK)

[info@small-cruise-ships.com](mailto:info@small-cruise-ships.com) | [small-cruise-ships.com](http://small-cruise-ships.com)



## The Small Cruise Ship Collection

[www.small-cruise-ships.com](http://www.small-cruise-ships.com)

[small-cruise-ships.com](http://small-cruise-ships.com)

[info@small-cruise-ships.com](mailto:info@small-cruise-ships.com)

Arrival 8:00 am, Departure 2:00 pm

The "Island of Fire", a UNESCO Biosphere Reserve, has been continually recreated by volcanic eruptions. A third of Lanzarote is a bizarre lunar landscape of barren, beige-grey lines of hills and "fire mountains". In sharp contrast to this are the snow white houses, golden beaches and sparse green vegetation. Its quaint wine-growing areas of La Geria have been declared an all-embracing art form by the Museum of Modern Art. The painter, sculptor and architect Cesar Manrique understood art as the link between man and nature and made a vital contribution to the look of his island home through his artistic creations.

Itineraries are subject to change.

Day 7 Las Palmas, Gran Canaria

Arrival 7:00 am

With its black volcano almost 6,561 feet high and endless white beaches along the coastline, the island of Gran Canaria displays a huge variety of landscapes. It's a "continent in miniature" with rugged rock formations, dense pine forests, dry valleys and reservoirs inland, lush vegetation in the north, shimmering dune landscapes in the south and weirdly shaped cliffs in the west. Almost half the island has been registered by UNESCO as a Biosphere Reserve. The capital, Las Palmas, is no less colorful, with its port and history stretching back 500 years. The showpiece of this historic old town is the magnificent Santa Ana Cathedral.

Please note:

The Small Cruise Ship Collection  
[www.small-cruise-ships.com](http://www.small-cruise-ships.com)

**01432 507 280** (within UK)

[info@small-cruise-ships.com](mailto:info@small-cruise-ships.com) | [small-cruise-ships.com](http://small-cruise-ships.com)

# The Small Cruise Ship Collection

[www.small-cruise-ships.com](http://www.small-cruise-ships.com)

[small-cruise-ships.com](http://small-cruise-ships.com)

[info@small-cruise-ships.com](mailto:info@small-cruise-ships.com)

## YOUR SHIP: SEA CLOUD II

<b>YOUR SHIP:</b>	<b>Sea Cloud II</b>
<b>VESSEL TYPE:</b>	<b>Tall Ship (Sailing)</b>
<b>LENGTH:</b>	<b>105 metres</b>
<b>PASSENGER CAPACITY:</b>	<b>96</b>
<b>BUILT/REFURBISHED:</b>	<b>2001</b>

Launched in 2001, Sea Cloud II is a stunning vessel, built along traditional lines, but offering deluxe accommodation. She combines timeless elegance of sailing ships of the past with the highest safety standards and the luxurious comfort of modern cruise ships. Just like her legendary sister ship Sea Cloud, the 29,600 square feet of sails is set by hand which is a truly magical sight. Built to accommodate 96 passengers in five star luxury, she offers a range of beautifully appointed suites and cabins which are furnished with great style. All accommodations have outside views and the bathrooms, in light marble, are unusually spacious and extremely comfortable. The finest, carefully chosen fabrics, combined with leather, rattan and other materials, brass and gold, precious woods and marble together create an impressive ensemble. No expense has been spared to create a sympathetic ambience in both the accommodations and public areas and this is reflected throughout the vessel. Public areas include an elegant lounge, library, fitness centre, boutique, lido bar and hospital. The single sitting dining room is airy and modern and the quality of the cuisine and service will be to the highest of standards, as one would expect on a Sea Cloud cruise. Relax on the Lido deck and experience the natural

grandeur of travelling under sail, rekindling memories of a



bygone age.

The Small Cruise Ship Collection  
[www.small-cruise-ships.com](http://www.small-cruise-ships.com)

**01432 507 280** (within UK)

[info@small-cruise-ships.com](mailto:info@small-cruise-ships.com) | [small-cruise-ships.com](http://small-cruise-ships.com)

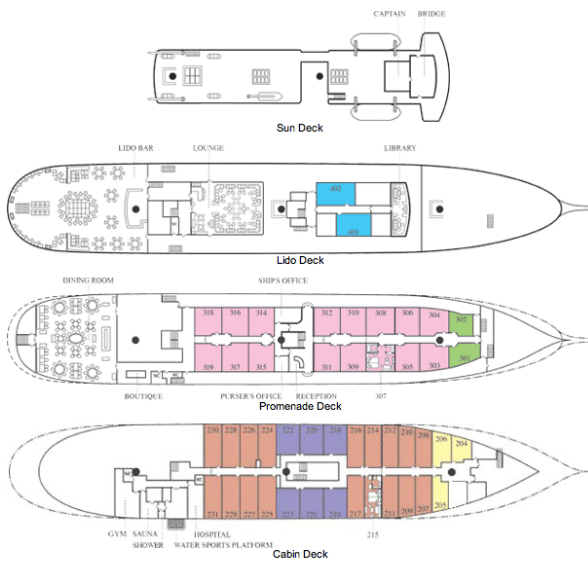
# The Small Cruise Ship Collection

www.small-cruise-ships.com

small-cruise-ships.com

info@small-cruise-ships.com

## INSIDE YOUR SHIP



Please note that category F cabins have one lower and one upper berth bed

- |   |   |   |
|---|---|---|
| <span style="color: blue;">■</span> Cat A   | <span style="color: pink;">■</span> Cat B   | <span style="color: green;">■</span> Cat C  |
| <span style="color: purple;">■</span> Cat D | <span style="color: orange;">■</span> Cat E | <span style="color: yellow;">■</span> Cat F |

Key

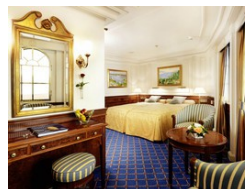
Category A. From



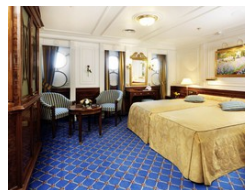
Category B. From



Category C. From



Category D. From



Category E. From

Category F Upper/Lower Beds. From



# The Small Cruise Ship Collection

[www.small-cruise-ships.com](http://www.small-cruise-ships.com)

[small-cruise-ships.com](http://small-cruise-ships.com)

[info@small-cruise-ships.com](mailto:info@small-cruise-ships.com)

## PRICING

17-Nov-2025 to 23-Nov-2025

GTY Double Cabin. From	£2286 GBP pp
Category F Upper/Lower Beds. From	£2485 GBP pp
Category E. From	£2867 GBP pp
Category D. From	£3191 GBP pp
Category C. From	£3357 GBP pp
Category B. From	£3971 GBP pp
Category A. From	£4428 GBP pp



The Small Cruise Ship Collection  
[www.small-cruise-ships.com](http://www.small-cruise-ships.com)

01432 507 280 (within UK)

[info@small-cruise-ships.com](mailto:info@small-cruise-ships.com) | [small-cruise-ships.com](http://small-cruise-ships.com)