

# The Small Cruise Ship Collection

www.small-cruise-ships.com

small-cruise-ships.com

info@small-cruise-ships.com

## AUSTRALIA'S ICONIC KIMBERLEY - FROM BROOME OR DARWIN LUXURY CRUISE

This cruise is intended for English-speaking passengers. All lectures, comments by naturalists during the outings and visits as well as the announcements and services on board will be in English. Set sail for the wild and grandiose landscapes of Kimberley, following this exceptional PONANT itinerary. From Broome to Darwin, embark for an 11-day expedition cruise. On the Lacepede Islands, take the time to admire the abundance of nesting birds as well as the large population of turtles residing in the lagoon. In one of the most picturesque parts of the region, the Hunter River, you will see wild mangrove forests where saltwater crocodiles live along with many species of birds. During your cruise, the magnificent bays of Vansittart and Swift will offer you exceptional panoramas, between islands, secret inlets, caves and rocky overhangs. The highpoint of this cruise will undoubtedly be the discovery of the King George River and the majestic Twin Falls, the highest falls in Western Australia. You will also visit Collier Bay, where you will be able to admire the Montgomery Reef, home to vast expanses of lagoons and immense coral reefs. Your ship will take you along one of the most spectacular coasts in the entire region. With their falls, abrupt gorges, savannah, calm waters and desolate mountain chains, the wild lands of Kimberley are the promise of an exceptional adventure.



### ITINERARY

Day 1 BROOME

Located in the northwest of the Kimberley region and in the far north of Western Australia, the town of Broome is reputed for its history and its glorious pearling era. The fascinating Chinatown district, which is the historic city centre, and the famous Japanese Cemetery, dates back to 1896, and has a past marked by the immigration of numerous Chinese and Japanese workers, attracted by the prosperous pearl industry at the end of the 19th century and at the beginning of the 20th century. Broome is also famous for the "Staircase to the Moon", an

The Small Cruise Ship Collection

www.small-cruise-ships.com

01432 507 280 (within UK)

info@small-cruise-ships.com | small-cruise-ships.com



## The Small Cruise Ship Collection

[www.small-cruise-ships.com](http://www.small-cruise-ships.com)

[small-cruise-ships.com](http://small-cruise-ships.com)

[info@small-cruise-ships.com](mailto:info@small-cruise-ships.com)

optical illusion created by the Moon reflecting on the sand banks at low tide, like a staircase climbing up towards the sky, a unique spectacle provided by nature...

### Day 2 LACEPEDE ISLANDS

The Lacepede Islands are Western Australia's most important breeding habitat for Green Turtles (*Chelonia mydas*), and have been named by BirdLife International as an Important Bird Area (IBA). The breeding colony of Brown Boobies is possibly the largest in the world. Up to 20,000 Roseate Terns have also been recorded here. Other birds breeding on the islands include Masked Boobies, Australian Pelicans, Lesser Frigatebirds, Eastern Reef Egrets, Silver Gulls, Crested, Bridled and Lesser Crested Terns, Common Noddies, Pied and Sooty Oystercatchers. Join your expedition team for a guided zodiac tour to view the prolific wildlife. Due to the sensitive nature of the environment, landings are prohibited on the Lacepede Islands.

### Days 3 - 4 COLLIER BAY

Lying to the east of the Buccaneer archipelago, the ancient landscapes of Collier Bay have been shaped by the massive tidal movements the region is renowned for, creating a photographer's paradise. With a tidal range exceeding 14 metres, recorded near Yule entrance at the southern end of the bay, they are among the largest in the world. This massive daily movement of water creates unique phenomena that occur nowhere else in the world. Nestled in the centre of the Bay is Montgomery Reef, the world's largest inshore reef system. As

the tide falls a raging torrent of water cascades off the top of the reef, creating turbulent 'rivers' and mini waterfalls. At the Southern end of the Bay, Talbot Bay is home to the world's only 'Horizontal Falls' described by Sir David Attenborough as "One of the greatest wonders of the natural world." Hidden in the many caves and grottos of this ancient landscape are a multitude of ancient Rock Art galleries. Here you can find spectacular examples of the Wandjina and Gwion Gwion styles. As we are at the mercy of weather and tide conditions in this region, the activities mentioned above are only possible experiences and can't be guaranteed.

### Day 5 CAREENING BAY

Careening Bay was named by Lieutenant Phillip Parker King after his ship, HMC Mermaid, was careened there during his third voyage of discovery in 1820. King surveyed the western coast to complete the map initiated by Flinders 20 years earlier. The Mermaid had been leaking badly and King needed to find a shallow sandy bay where he could careen his boat to undertake repairs. At a high tide, on a warm September afternoon, he ran the Mermaid onto the sands. For ten days the Mermaid crew worked hard before refloating the vessel. The ship's carpenter carved the name of the vessel and the year into a conspicuous boab tree. The famous boab tree is now 3 metres wide and National Heritage listed. A reminder of a by gone era of exploration!

### Day 6 HUNTER RIVER

Arguably one of the most scenic parts of the Kimberley coast,

The Small Cruise Ship Collection

[www.small-cruise-ships.com](http://www.small-cruise-ships.com)

01432 507 280 (within UK)

[info@small-cruise-ships.com](mailto:info@small-cruise-ships.com) | [small-cruise-ships.com](http://small-cruise-ships.com)



## The Small Cruise Ship Collection

[www.small-cruise-ships.com](http://www.small-cruise-ships.com)

[small-cruise-ships.com](http://small-cruise-ships.com)

[info@small-cruise-ships.com](mailto:info@small-cruise-ships.com)

Prince Frederick Harbour and the Hunter River are lined with ancient rainforest pockets, pristine mangroves and mosaic sandstone cliffs. They are considered to be some of the most pristine mangrove forests in the world, containing up to 18 different species, supporting a rich and diverse fauna. The sandstone escarpment at the river mouth, known as "Kampamantiya" rises over 200 metres high before giving way to extensive mud banks and mangrove forests home to numerous bird species and the iconic saltwater crocodile. Our expert Expedition Team will share their knowledge with you as you explore this pristine mangrove environment by zodiac keeping a constant lookout for wildlife. You will also have the opportunity to reach the Mitchell Falls by helicopter from Naturalist Island beach.

### Day 7 SWIFT BAY

The Bonaparte Archipelago, is a stunningly rugged maze of islands stretching almost 150 km along Western Australia's remote Kimberley coast. Its colour and scale conspire to take ones' breath away. Its distant location has meant it has remained an unspoilt and remarkably pristine location to explore and experience. Phillip Parker King named "Swift's bay" after Jonathon Swift (1667-1745) the author of Gulliver's travels. The 'T' shaped bay is composed of heavily fractured sandstone providing an abundance of rock shelters. On the walls of these shelters are examples of both Wandjina and Gwion Gwion style rock art. Join your expedition team ashore for a guided walk to a number of rock art galleries depicting these unique rock art styles.

### Day 8 VANSITTART BAY

Jar Island contains ancient rock art galleries depicting the Gwion Gwion style unique to the Kimberley region. Mainly neglected by, or unknown to, the early European researchers of Aboriginal culture in the Kimberley in favour of the dominant and more dramatic Wandjina art, Gwion Gwion art has in recent years gained world prominence. It is generally thought that this art may extend back to over 30,000 years before our time and represents the first wave of seagoing colonisers of the Australian continent. As it is, these are the oldest detailed depiction of human figures in the world. Join your Expedition Team ashore for a short walk, past some fascinating rock formations, to the site of the Gwion Gwion art galleries.

### Day 9 KING GEORGE RIVER

The journey up the King George River is nothing short of breathtaking. The 80-metre-high sides of the gorge display varying degrees of weathering of the ancient Warton sandstone. The colours and textures of the gorge change with the light as you travel further up the river creating a continual changing scenery that is simply stunning. The journey culminates at the King George twin falls; the highest single-drop falls in the whole of the Kimberley (80 m or 260 ft). Fed by wet season run-off the level of water cascading over the falls varies from year to year. Your Expedition Team will escort you in either the zodiacs or ships tenders to the foot of the twin falls, and explain all about the stunning geological formations of the canyon.

### Day 10 AT SEA

The Small Cruise Ship Collection  
[www.small-cruise-ships.com](http://www.small-cruise-ships.com)

**01432 507 280** (within UK)

[info@small-cruise-ships.com](mailto:info@small-cruise-ships.com) | [small-cruise-ships.com](http://small-cruise-ships.com)



During your journey at sea, make the most of the many services and activities on board. Treat yourself to a moment of relaxation in the spa or stay in shape in the fitness centre. Depending on the season, let yourself be tempted by the swimming pool or a spot of sunbathing. This journey without a port of call will also be an opportunity to enjoy the conferences or shows proposed on board, depending on the activities offered, or to do some shopping in the boutique or to meet the PONANT photographers in their dedicated space. As for lovers of the open sea, they will be able to visit the ship's upper deck to admire the spectacle of the waves and perhaps be lucky enough to observe marine species. A truly enchanted interlude, combining comfort, rest and entertainment.

#### Day 11 DARWIN

Darwin is located in Australia's Northern Territory which is also known as the "Top End". It is the capital city and the most populated town of the Northern Territory. Darwin is a beautiful tropical city, a melting pot of people and cultures, over 50 different cultures live and work side by side that prides itself in its unique and friendly laid-back lifestyle. Come discover the town's still recent history through its emblematic buildings such as the new Parliament House opened in 1994, a magnificent example of tropical architecture or Admiralty House declared heritage place, a tropical-style home elevated on stilts that has survived two cyclones and numerous air raids.

Please Note:

This itinerary is given as an indication only. Based on tide times and weather conditions, the Captain and the Expedition Leader may need to switch the order of certain ports of call around to ensure guests have the best possible experience.



## The Small Cruise Ship Collection

[www.small-cruise-ships.com](http://www.small-cruise-ships.com)

[small-cruise-ships.com](http://small-cruise-ships.com)

[info@small-cruise-ships.com](mailto:info@small-cruise-ships.com)

## YOUR SHIP: LE JACQUES CARTIER

**YOUR SHIP:** Le Jacques Cartier

**VESSEL TYPE:**

**LENGTH:**

**PASSENGER CAPACITY:**

**BUILT/REFURBISHED:**

Featuring innovative and environmentally-friendly equipment, elegantly designed staterooms, spacious suites with large windows, and lounge areas that open onto the outside, this new limited-capacity yacht boasting just 92 staterooms and suites will offer you a truly unique cruising experience. Le Jacques Cartier will embody refinement, intimacy and comfort. Aboard this ship that flies the French flag, you will experience the incomparable pleasure of an intimate cruise, with the possibility of exploring an ever-increasing range of destinations in an ethnic-chic ambiance with luxury service. Experience a luxurious setting where the accent is on authenticity and passion for travel. RESTAURANTS As it is an essential part of French culture, gastronomy will naturally have pride of place aboard this new ship. To the back of Deck 4, you will find a 260 m<sup>2</sup> panoramic restaurant which can accommodate all of our passengers in a single sitting. Designed differently to that on our other ships, this dining area, which opens onto the outside, will have a buffet of salads, desserts and cheeses at your disposal. Our discreet and attentive crew will provide table service for hot meals. In a relaxed atmosphere, an outdoor grill on Deck 3 will serve grilled meats with a variety of salads and desserts. PUBLIC AREAS Le

Jacques Cartier has many common areas that are designed and equipped to meet all of your needs while preserving the intimacy of each passenger. A 140 m<sup>2</sup> reception area includes: A reception/concierge desk, An excursions desk, The ship's administrative services, The sales office, manned by our Guest Relations Officer, Our 50 m<sup>2</sup> boutique which sells clothing, jewellery, beauty products, postcards and various accessories, Toilets accessible to passengers with reduced mobility. A new hydraulic platform with adjustable height provides: Easier boarding than on any other cruise ship, Easier Zodiac embarkation and disembarkation for expeditions, Easier access to the sea for swimming and practising various water sports such as kayaking or paddle-boarding. A pool deck offering: A pool with a panoramic view, equipped with a counter-current swimming system, A pleasant solarium, An outdoor bar and lounge with armchairs and sofas. A 200 m<sup>2</sup> main lounge which can accommodate all of our passengers to share convivial moments and to host activities organised during the day or evening. Lastly, a theatre that seats 188, equipped with: The latest sound and lighting technology, A LED wall as the stage backdrop, for the projection of high-resolution images and videos. Please click the following links to read more about Ponant and the other Ponant

The Small Cruise Ship Collection

[www.small-cruise-ships.com](http://www.small-cruise-ships.com)

01432 507 280 (within UK)

[info@small-cruise-ships.com](mailto:info@small-cruise-ships.com) | [small-cruise-ships.com](http://small-cruise-ships.com)



cruise ships.

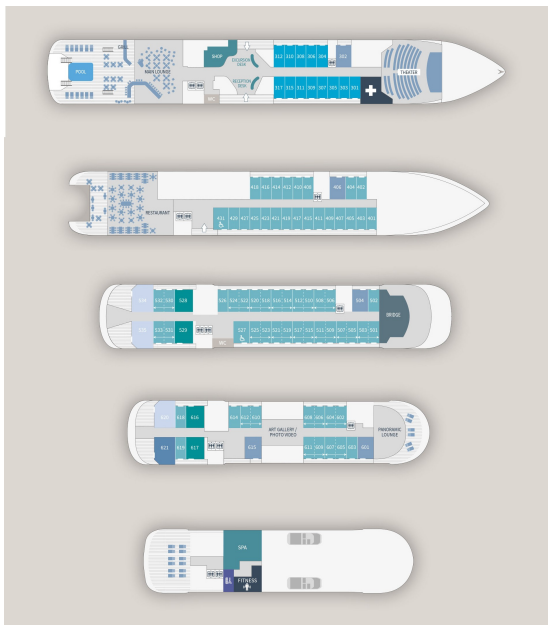
# The Small Cruise Ship Collection

www.small-cruise-ships.com

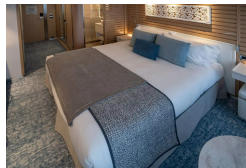
small-cruise-ships.com

info@small-cruise-ships.com

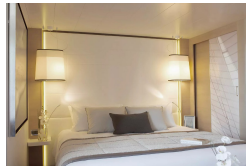
## INSIDE YOUR SHIP



### DELUXE STATEROOM



### DeLuxe Stateroom



### Deluxe Suite

### OWNER'S SUITE

### PRESTIGE STATEROOM DECK 4

### PRESTIGE STATEROOM DECK 6

### PRESTIGE SUITE DECK 6

### Prestige Deck 4

### Prestige Deck 5 Suite

### Prestige Deck 6 Suite

### DELUXE SUITE

### Deluxe Stateroom

### GRAND DELUXE SUITE

### Owner's Suite

### PRESTIGE STATEROOM DECK 5

### PRESTIGE SUITE DECK 5

### PRIVILEGE SUITE

### Prestige Deck 5

### Prestige Deck 6

### Prestige Stateroom - Deck 4



Prestige Stateroom - Deck 5

Prestige Stateroom - Deck 6

Prestige Suite - Deck 5

Prestige Suite - Deck 6



# The Small Cruise Ship Collection

www.small-cruise-ships.com

small-cruise-ships.com

info@small-cruise-ships.com

## PRICING

### 24-May-2025 to 03-Jun-2025

<b>GRAND DELUXE SUITE</b>	<b>£15989 GBP pp</b>
<b>Deluxe Suite Deck 6</b>	<b>£11889 GBP pp</b>
<b>Privilege Suite Deck 6</b>	<b>£15535 GBP pp</b>
<b>PRESTIGE STATEROOM DECK 4</b>	<b>£7859 GBP pp</b>
<b>OWNER'S SUITE</b>	<b>£19475 GBP pp</b>
<b>PRESTIGE STATEROOM DECK 5</b>	<b>£8239 GBP pp</b>
<b>DELUXE STATEROOM</b>	<b>£7079 GBP pp</b>
<b>PRESTIGE SUITE DECK 6</b>	<b>£15065 GBP pp</b>
<b>PRESTIGE SUITE DECK 5</b>	<b>£14365 GBP pp</b>
<b>PRESTIGE STATEROOM DECK 6</b>	<b>£8709 GBP pp</b>
<b>DELUXE SUITE</b>	<b>£11889 GBP pp</b>
<b>Deluxe Suite Deck 4</b>	<b>£11889 GBP pp</b>
<b>Grand Deluxe Suite Deck 6</b>	<b>£15989 GBP pp</b>
<b>PRIVILEGE SUITE</b>	<b>£15535 GBP pp</b>
<b>Deluxe Suite Deck 5</b>	<b>£11889 GBP pp</b>

<b>DELUXE SUITE</b>	<b>£13639 GBP pp</b>
<b>PRESTIGE STATEROOM DECK 6</b>	<b>£10455 GBP pp</b>
<b>DELUXE STATEROOM</b>	<b>£8505 GBP pp</b>
<b>PRESTIGE STATEROOM DECK 4</b>	<b>£9435 GBP pp</b>
<b>PRESTIGE SUITE DECK 6</b>	<b>£17199 GBP pp</b>
<b>PRESTIGE SUITE DECK 5</b>	<b>£16449 GBP pp</b>
<b>OWNER'S SUITE</b>	<b>£17710 GBP pp</b>
<b>PRESTIGE STATEROOM DECK 5</b>	<b>£9899 GBP pp</b>
<b>GRAND DELUXE SUITE</b>	<b>£18309 GBP pp</b>
<b>PRIVILEGE SUITE</b>	<b>£17755 GBP pp</b>

### 03-Jun-2025 to 13-Jun-2025

# The Small Cruise Ship Collection

www.small-cruise-ships.com

small-cruise-ships.com

info@small-cruise-ships.com

## PRICING

### 13-Jun-2025 to 23-Jun-2025

DELUXE STATEROOM	£7655 GBP pp
Privilege Suite Deck 6	£15935 GBP pp
DELUXE SUITE	£12255 GBP pp
PRESTIGE STATEROOM DECK 4	£8489 GBP pp
OWNER'S SUITE	£19475 GBP pp
PRESTIGE SUITE DECK 5	£14765 GBP pp
PRESTIGE STATEROOM DECK 6	£9405 GBP pp
Deluxe Suite Deck 6	£12255 GBP pp
Deluxe Suite Deck 5	£12255 GBP pp
Deluxe Suite Deck 4	£12255 GBP pp
PRESTIGE SUITE DECK 6	£15439 GBP pp
PRIVILEGE SUITE	£15935 GBP pp
GRAND DELUXE SUITE	£16435 GBP pp
Grand Deluxe Suite Deck 6	£16435 GBP pp
PRESTIGE STATEROOM DECK 5	£8905 GBP pp

### 23-Jun-2025 to 03-Jul-2025

DELUXE SUITE	£11559 GBP pp
PRESTIGE STATEROOM DECK 5	£8415 GBP pp
DELUXE STATEROOM	£7235 GBP pp
PRESTIGE SUITE DECK 6	£14555 GBP pp
PRESTIGE SUITE DECK 5	£13925 GBP pp
PRIVILEGE SUITE	£15025 GBP pp
PRESTIGE STATEROOM DECK 4	£8019 GBP pp
GRAND DELUXE SUITE	£15495 GBP pp
OWNER'S SUITE	£19471 GBP pp
PRESTIGE STATEROOM DECK 6	£8879 GBP pp

### 02-Jul-2025 to 12-Jul-2025

Prestige Suite - Deck 6	£15439 GBP pp
Prestige Suite - Deck 5	£14765 GBP pp
Owner's Suite	£19475 GBP pp
Superior Stateroom	£7065 GBP pp
DeLuxe Stateroom	£7655 GBP pp
Prestige Stateroom - Deck 4	£8489 GBP pp
Deluxe Suite	£12255 GBP pp
Prestige Stateroom - Deck 6	£9405 GBP pp
Prestige Stateroom - Deck 5	£8905 GBP pp

# The Small Cruise Ship Collection

www.small-cruise-ships.com

small-cruise-ships.com

info@small-cruise-ships.com

## PRICING

### 03-Jul-2025 to 13-Jul-2025

PRESTIGE STATEROOM DECK 4	£8019 GBP pp
PRESTIGE SUITE DECK 6	£14555 GBP pp
PRIVILEGE SUITE	£15025 GBP pp
PRESTIGE SUITE DECK 5	£13925 GBP pp
PRESTIGE STATEROOM DECK 5	£8415 GBP pp
PRESTIGE STATEROOM DECK 6	£8879 GBP pp
OWNER'S SUITE	£19475 GBP pp
Deluxe Suite Deck 6	£11559 GBP pp
GRAND DELUXE SUITE	£15495 GBP pp
Grand Deluxe Suite Deck 6	£15495 GBP pp
Deluxe Suite Deck 5	£11559 GBP pp
DELUXE SUITE	£11559 GBP pp
Deluxe Suite Deck 4	£11559 GBP pp
DELUXE STATEROOM	£7235 GBP pp
Privilege Suite Deck 6	£15025 GBP pp

### 12-Jul-2025 to 22-Jul-2025

Deluxe Suite	£11559 GBP pp
DeLuxe Stateroom	£7235 GBP pp
Prestige Stateroom - Deck 5	£8415 GBP pp
Owner's Suite	£17710 GBP pp
Superior Stateroom	£6679 GBP pp
Prestige Suite - Deck 5	£13925 GBP pp
Prestige Suite - Deck 6	£14555 GBP pp
Prestige Stateroom - Deck 6	£8879 GBP pp
Prestige Stateroom - Deck 4	£8019 GBP pp

### 13-Jul-2025 to 23-Jul-2025

PRESTIGE STATEROOM DECK 4	£8019 GBP pp
DELUXE STATEROOM	£7235 GBP pp
OWNER'S SUITE	£17710 GBP pp
PRIVILEGE SUITE	£15025 GBP pp
PRESTIGE STATEROOM DECK 6	£8879 GBP pp
PRESTIGE STATEROOM DECK 5	£8415 GBP pp
DELUXE SUITE	£11559 GBP pp
PRESTIGE SUITE DECK 5	£13925 GBP pp
GRAND DELUXE SUITE	£15495 GBP pp
PRESTIGE SUITE DECK 6	£14555 GBP pp

# The Small Cruise Ship Collection

www.small-cruise-ships.com

small-cruise-ships.com

info@small-cruise-ships.com

## PRICING

### 22-Jul-2025 to 01-Aug-2025

Prestige Suite - Deck 5	£17199 GBP pp
Prestige Suite - Deck 6	£17989 GBP pp
Owner's Suite	£19759 GBP pp
DeLuxe Stateroom	£8835 GBP pp
Superior Stateroom	£8145 GBP pp
Prestige Stateroom - Deck 4	£9815 GBP pp
Prestige Stateroom - Deck 6	£10895 GBP pp
Deluxe Suite	£14239 GBP pp
Prestige Stateroom - Deck 5	£10309 GBP pp

### 23-Jul-2025 to 02-Aug-2025

Grand Deluxe Suite Deck 6	£15495 GBP pp
DELUXE SUITE	£11559 GBP pp
OWNER'S SUITE	£19475 GBP pp
PRESTIGE STATEROOM DECK 6	£8879 GBP pp
PRESTIGE STATEROOM DECK 5	£8415 GBP pp
PRESTIGE SUITE DECK 5	£13925 GBP pp
Deluxe Suite Deck 6	£11559 GBP pp
Deluxe Suite Deck 4	£11559 GBP pp
DELUXE STATEROOM	£7235 GBP pp
PRESTIGE SUITE DECK 6	£14555 GBP pp
PRIVILEGE SUITE	£15025 GBP pp
GRAND DELUXE SUITE	£15495 GBP pp
Privilege Suite Deck 6	£15025 GBP pp
Deluxe Suite Deck 5	£11559 GBP pp
PRESTIGE STATEROOM DECK 4	£8019 GBP pp

### 01-Aug-2025 to 11-Aug-2025

Owner's Suite	£19475 GBP pp
Prestige Stateroom - Deck 6	£8879 GBP pp
Prestige Suite - Deck 6	£14555 GBP pp
Superior Stateroom	£6679 GBP pp
Prestige Stateroom - Deck 4	£8019 GBP pp
Prestige Stateroom - Deck 5	£8415 GBP pp
Deluxe Suite	£11559 GBP pp
DeLuxe Stateroom	£7235 GBP pp
Prestige Suite - Deck 5	£13925 GBP pp

# The Small Cruise Ship Collection

www.small-cruise-ships.com

small-cruise-ships.com

info@small-cruise-ships.com

## PRICING

### 02-Aug-2025 to 12-Aug-2025

PRESTIGE STATEROOM DECK 5	£8415 GBP pp
PRESTIGE SUITE DECK 5	£13925 GBP pp
OWNER'S SUITE	£17710 GBP pp
PRIVILEGE SUITE	£15025 GBP pp
GRAND DELUXE SUITE	£15495 GBP pp
PRESTIGE SUITE DECK 6	£14555 GBP pp
DELUXE SUITE	£11559 GBP pp
PRESTIGE STATEROOM DECK 6	£8879 GBP pp
DELUXE STATEROOM	£7235 GBP pp
PRESTIGE STATEROOM DECK 4	£8019 GBP pp

### 12-Aug-2025 to 22-Aug-2025

PRESTIGE SUITE DECK 6	£14465 GBP pp
OWNER'S SUITE	£19385 GBP pp
GRAND DELUXE SUITE	£15405 GBP pp
PRESTIGE STATEROOM DECK 5	£8319 GBP pp
PRESTIGE STATEROOM DECK 6	£8789 GBP pp
Grand Deluxe Suite Deck 6	£15405 GBP pp
DELUXE STATEROOM	£7145 GBP pp
PRESTIGE SUITE DECK 5	£13835 GBP pp
PRIVILEGE SUITE	£14935 GBP pp
DELUXE SUITE	£11465 GBP pp
PRESTIGE STATEROOM DECK 4	£7925 GBP pp
Deluxe Suite Deck 5	£11465 GBP pp
Deluxe Suite Deck 4	£11465 GBP pp
Privilege Suite Deck 6	£14935 GBP pp
Deluxe Suite Deck 6	£11465 GBP pp

# The Small Cruise Ship Collection

www.small-cruise-ships.com

small-cruise-ships.com

info@small-cruise-ships.com

## PRICING

### 22-Aug-2025 to 01-Sep-2025

PRIVILEGE SUITE	£15025 GBP pp
GRAND DELUXE SUITE	£15495 GBP pp
PRESTIGE SUITE DECK 5	£13925 GBP pp
PRESTIGE STATEROOM DECK 5	£8415 GBP pp
PRESTIGE STATEROOM DECK 6	£8879 GBP pp
OWNER'S SUITE	£19475 GBP pp
PRESTIGE SUITE DECK 6	£14555 GBP pp
PRESTIGE STATEROOM DECK 4	£8019 GBP pp
Privilege Suite Deck 6	£15025 GBP pp
DELUXE STATEROOM	£7235 GBP pp
DELUXE SUITE	£11559 GBP pp
Deluxe Suite Deck 4	£11559 GBP pp
Deluxe Suite Deck 6	£11559 GBP pp
Deluxe Suite Deck 5	£11559 GBP pp
Grand Deluxe Suite Deck 6	£15495 GBP pp

### 31-Aug-2025 to 10-Sep-2025

Owner's Suite	£17710 GBP pp
Prestige Stateroom - Deck 4	£8489 GBP pp
Deluxe Suite	£12255 GBP pp
Prestige Stateroom - Deck 6	£9405 GBP pp
Prestige Stateroom - Deck 5	£8905 GBP pp
Superior Stateroom	£7065 GBP pp
Prestige Suite - Deck 6	£15439 GBP pp
DeLuxe Stateroom	£7655 GBP pp
Prestige Suite - Deck 5	£14765 GBP pp

### 01-Sep-2025 to 11-Sep-2025

DELUXE SUITE	£11559 GBP pp
GRAND DELUXE SUITE	£15495 GBP pp
DELUXE STATEROOM	£7235 GBP pp
OWNER'S SUITE	£17710 GBP pp
PRESTIGE STATEROOM DECK 6	£8879 GBP pp
PRESTIGE STATEROOM DECK 5	£8415 GBP pp
PRESTIGE STATEROOM DECK 4	£8019 GBP pp
PRESTIGE SUITE DECK 5	£13925 GBP pp
PRIVILEGE SUITE	£15025 GBP pp
PRESTIGE SUITE DECK 6	£14555 GBP pp

# The Small Cruise Ship Collection

www.small-cruise-ships.com

small-cruise-ships.com

info@small-cruise-ships.com

## PRICING

### 11-Sep-2025 to 21-Sep-2025

PRIVILEGE SUITE	£14119 GBP pp
GRAND DELUXE SUITE	£14555 GBP pp
DELUXE SUITE	£10865 GBP pp
OWNER'S SUITE	£19475 GBP pp
PRESTIGE STATEROOM DECK 5	£7915 GBP pp
PRESTIGE STATEROOM DECK 6	£8355 GBP pp
Grand Deluxe Suite Deck 6	£14555 GBP pp
Deluxe Suite Deck 6	£10865 GBP pp
Deluxe Suite Deck 5	£10865 GBP pp
Deluxe Suite Deck 4	£10865 GBP pp
PRESTIGE SUITE DECK 5	£13085 GBP pp
PRESTIGE STATEROOM DECK 4	£7545 GBP pp
Privilege Suite Deck 6	£14119 GBP pp
DELUXE STATEROOM	£6809 GBP pp
PRESTIGE SUITE DECK 6	£13675 GBP pp

OWNER'S SUITE	£17710 GBP pp
DELUXE SUITE	£12693 GBP pp
PRESTIGE SUITE DECK 6	£16101 GBP pp
DELUXE STATEROOM	£7779 GBP pp
PRESTIGE STATEROOM DECK 5	£9118 GBP pp
PRESTIGE STATEROOM DECK 6	£9652 GBP pp
GRAND DELUXE SUITE	£17167 GBP pp
PRESTIGE STATEROOM DECK 4	£8669 GBP pp
PRIVILEGE SUITE	£16634 GBP pp
PRESTIGE SUITE DECK 5	£15382 GBP pp

### 21-Sep-2025 to 01-Oct-2025

# The Small Cruise Ship Collection

www.small-cruise-ships.com

small-cruise-ships.com

info@small-cruise-ships.com

## PRICING

### 13-May-2026 to 23-May-2026

Deluxe Suite Deck 6	£10465 GBP pp
Prestige Deck 5 Suite	£12595 GBP pp
Privilege Suite Deck 5	£13589 GBP pp
Prestige Deck 5	£7625 GBP pp
Prestige Deck 6 Suite	£13159 GBP pp
Grand Deluxe Suite Deck 6	£14015 GBP pp
Deluxe Suite Deck 5	£10465 GBP pp
Deluxe Suite Deck 4	£10465 GBP pp
Deluxe Suite Deck 3	£10465 GBP pp
Deluxe Stateroom	£6565 GBP pp
Privilege Suite Deck 6	£13589 GBP pp
Prestige Deck 6	£8055 GBP pp
Prestige Deck 4	£7269 GBP pp
Grand Deluxe Suite Deck 5	£14015 GBP pp

Prestige Deck 6 Suite	£13165 GBP pp
Privilege Suite Deck 5	£13595 GBP pp
Prestige Deck 5 Suite	£12599 GBP pp
Prestige Deck 5	£7635 GBP pp
Prestige Deck 4	£7275 GBP pp
Deluxe Stateroom	£6569 GBP pp
Grand Deluxe Suite Deck 6	£14015 GBP pp
Grand Deluxe Suite Deck 5	£14015 GBP pp
Deluxe Suite Deck 5	£10475 GBP pp
Deluxe Suite Deck 4	£10475 GBP pp
Deluxe Suite Deck 3	£10475 GBP pp
Privilege Suite Deck 6	£13595 GBP pp
Prestige Deck 6	£8059 GBP pp
Deluxe Suite Deck 6	£10475 GBP pp

### 23-May-2026 to 02-Jun-2026



# The Small Cruise Ship Collection

www.small-cruise-ships.com

small-cruise-ships.com

info@small-cruise-ships.com

## PRICING

### 02-Jun-2026 to 12-Jun-2026

Deluxe Suite Deck 6	£10465 GBP pp
Deluxe Suite Deck 5	£10465 GBP pp
Deluxe Stateroom	£6565 GBP pp
Grand Deluxe Suite Deck 6	£14015 GBP pp
Grand Deluxe Suite Deck 5	£14015 GBP pp
Prestige Deck 5 Suite	£12595 GBP pp
Privilege Suite Deck 6	£13589 GBP pp
Privilege Suite Deck 5	£13589 GBP pp
Deluxe Suite Deck 4	£10465 GBP pp
Prestige Deck 6	£8055 GBP pp
Deluxe Suite Deck 3	£10465 GBP pp
Prestige Deck 6 Suite	£13159 GBP pp
Prestige Deck 5	£7625 GBP pp
Prestige Deck 4	£7269 GBP pp

Deluxe Suite Deck 3	£10475 GBP pp
Deluxe Suite Deck 5	£10475 GBP pp
Deluxe Suite Deck 4	£10475 GBP pp
Privilege Suite Deck 6	£13595 GBP pp
Grand Deluxe Suite Deck 6	£14015 GBP pp
Privilege Suite Deck 5	£13595 GBP pp
Prestige Deck 5	£7635 GBP pp
Prestige Deck 4	£7275 GBP pp
Deluxe Stateroom	£6569 GBP pp
Prestige Deck 5 Suite	£12599 GBP pp
Prestige Deck 6	£8059 GBP pp
Grand Deluxe Suite Deck 5	£14015 GBP pp
Deluxe Suite Deck 6	£10475 GBP pp
Prestige Deck 6 Suite	£13165 GBP pp

### 12-Jun-2026 to 22-Jun-2026

# The Small Cruise Ship Collection

www.small-cruise-ships.com

small-cruise-ships.com

info@small-cruise-ships.com

## PRICING

### 22-Jun-2026 to 02-Jul-2026

Privilege Suite Deck 5	£13589 GBP pp
Deluxe Suite Deck 6	£10465 GBP pp
Privilege Suite Deck 6	£13589 GBP pp
Prestige Deck 4	£7269 GBP pp
Deluxe Suite Deck 5	£10465 GBP pp
Deluxe Suite Deck 4	£10465 GBP pp
Deluxe Suite Deck 3	£10465 GBP pp
Deluxe Stateroom	£6565 GBP pp
Grand Deluxe Suite Deck 5	£14015 GBP pp
Prestige Deck 6 Suite	£13159 GBP pp
Prestige Deck 5 Suite	£12595 GBP pp
Prestige Deck 6	£8055 GBP pp
Prestige Deck 5	£7625 GBP pp
Grand Deluxe Suite Deck 6	£14015 GBP pp

Deluxe Suite Deck 5	£11185 GBP pp
Prestige Deck 4	£7765 GBP pp
Deluxe Suite Deck 3	£11185 GBP pp
Prestige Deck 6 Suite	£14075 GBP pp
Grand Deluxe Suite Deck 6	£14985 GBP pp
Privilege Suite Deck 5	£14535 GBP pp
Prestige Deck 6	£8599 GBP pp
Privilege Suite Deck 6	£14535 GBP pp
Prestige Deck 5 Suite	£13465 GBP pp
Grand Deluxe Suite Deck 5	£14985 GBP pp
Prestige Deck 5	£8145 GBP pp
Deluxe Suite Deck 4	£11185 GBP pp
Deluxe Stateroom	£7005 GBP pp
Deluxe Suite Deck 6	£11185 GBP pp

### 29-Jun-2026 to 09-Jul-2026

Deluxe Suite	£11179 GBP pp
Deluxe Stateroom	£6999 GBP pp
Prestige Deck 5 Suite	£13459 GBP pp
Prestige Deck 6 Suite	£14069 GBP pp
Prestige Deck 4	£7759 GBP pp
Prestige Deck 6	£8595 GBP pp
Prestige Deck 5	£8135 GBP pp
Superior Stateroom	£6469 GBP pp

### 02-Jul-2026 to 12-Jul-2026

# The Small Cruise Ship Collection

www.small-cruise-ships.com

small-cruise-ships.com

info@small-cruise-ships.com

## PRICING

### 09-Jul-2026 to 19-Jul-2026

Prestige Deck 6 Suite	£13165 GBP pp
Prestige Deck 5 Suite	£12599 GBP pp
Prestige Deck 6	£8059 GBP pp
Superior Stateroom	£6075 GBP pp
Prestige Deck 5	£7635 GBP pp
Prestige Deck 4	£7275 GBP pp
Deluxe Suite	£10475 GBP pp
Deluxe Stateroom	£6569 GBP pp

Prestige Deck 6 Suite	£13159 GBP pp
Prestige Deck 5 Suite	£12595 GBP pp
Superior Stateroom	£6069 GBP pp
Deluxe Suite	£10465 GBP pp
Deluxe Stateroom	£6565 GBP pp
Prestige Deck 6	£8055 GBP pp
Prestige Deck 5	£7625 GBP pp
Prestige Deck 4	£7269 GBP pp

### 12-Jul-2026 to 22-Jul-2026

Deluxe Stateroom	£6999 GBP pp
Prestige Deck 6 Suite	£14069 GBP pp
Deluxe Suite Deck 3	£11179 GBP pp
Grand Deluxe Suite Deck 5	£14979 GBP pp
Prestige Deck 5 Suite	£13459 GBP pp
Prestige Deck 6	£8595 GBP pp
Prestige Deck 4	£7759 GBP pp
Deluxe Suite Deck 6	£11179 GBP pp
Deluxe Suite Deck 5	£11179 GBP pp
Deluxe Suite Deck 4	£11179 GBP pp
Grand Deluxe Suite Deck 6	£14979 GBP pp
Privilege Suite Deck 6	£14525 GBP pp
Privilege Suite Deck 5	£14525 GBP pp
Prestige Deck 5	£8135 GBP pp

### 19-Jul-2026 to 29-Jul-2026

# The Small Cruise Ship Collection

www.small-cruise-ships.com

small-cruise-ships.com

info@small-cruise-ships.com

## PRICING

### 22-Jul-2026 to 01-Aug-2026

Prestige Deck 4	£7275 GBP pp
Grand Deluxe Suite Deck 5	£14015 GBP pp
Prestige Deck 6 Suite	£13165 GBP pp
Grand Deluxe Suite Deck 6	£14015 GBP pp
Deluxe Suite Deck 6	£10475 GBP pp
Deluxe Suite Deck 4	£10475 GBP pp
Deluxe Suite Deck 3	£10475 GBP pp
Deluxe Stateroom	£6569 GBP pp
Deluxe Suite Deck 5	£10475 GBP pp
Privilege Suite Deck 5	£13595 GBP pp
Prestige Deck 5 Suite	£12599 GBP pp
Privilege Suite Deck 6	£13595 GBP pp
Prestige Deck 6	£8059 GBP pp
Prestige Deck 5	£7635 GBP pp

Deluxe Suite Deck 4	£10465 GBP pp
Prestige Deck 5 Suite	£12595 GBP pp
Privilege Suite Deck 6	£13589 GBP pp
Prestige Deck 6	£8055 GBP pp
Grand Deluxe Suite Deck 5	£14015 GBP pp
Deluxe Suite Deck 6	£10465 GBP pp
Deluxe Suite Deck 5	£10465 GBP pp
Privilege Suite Deck 5	£13589 GBP pp
Prestige Deck 4	£7269 GBP pp
Prestige Deck 5	£7625 GBP pp
Grand Deluxe Suite Deck 6	£14015 GBP pp
Deluxe Stateroom	£6565 GBP pp
Prestige Deck 6 Suite	£13159 GBP pp
Deluxe Suite Deck 3	£10465 GBP pp

### 01-Aug-2026 to 11-Aug-2026

# The Small Cruise Ship Collection

www.small-cruise-ships.com

small-cruise-ships.com

info@small-cruise-ships.com

## PRICING

### 11-Aug-2026 to 21-Aug-2026

Deluxe Suite Deck 4	£11185 GBP pp
Deluxe Stateroom	£7005 GBP pp
Prestige Deck 6 Suite	£14075 GBP pp
Grand Deluxe Suite Deck 5	£14985 GBP pp
Grand Deluxe Suite Deck 6	£14985 GBP pp
Deluxe Suite Deck 3	£11185 GBP pp
Prestige Deck 5 Suite	£13465 GBP pp
Prestige Deck 4	£7765 GBP pp
Privilege Suite Deck 6	£14535 GBP pp
Privilege Suite Deck 5	£14535 GBP pp
Prestige Deck 6	£8599 GBP pp
Prestige Deck 5	£8145 GBP pp
Deluxe Suite Deck 6	£11185 GBP pp
Deluxe Suite Deck 5	£11185 GBP pp

### 18-Aug-2026 to 28-Aug-2026

Prestige Deck 5 Suite	£13465 GBP pp
Superior Stateroom	£6475 GBP pp
Prestige Deck 6 Suite	£14075 GBP pp
Prestige Deck 6	£8599 GBP pp
Prestige Deck 5	£8145 GBP pp
Prestige Deck 4	£7765 GBP pp
Deluxe Suite	£11185 GBP pp
Deluxe Stateroom	£7005 GBP pp

### 28-Aug-2026 to 07-Sep-2026

Deluxe Stateroom	£6565 GBP pp
Prestige Deck 5 Suite	£12595 GBP pp
Deluxe Suite	£10465 GBP pp
Prestige Deck 6 Suite	£13159 GBP pp
Superior Stateroom	£6069 GBP pp
Prestige Deck 5	£7625 GBP pp
Prestige Deck 4	£7269 GBP pp
Prestige Deck 6	£8055 GBP pp



# The Small Cruise Ship Collection

[www.small-cruise-ships.com](http://www.small-cruise-ships.com)

[small-cruise-ships.com](http://small-cruise-ships.com)

[info@small-cruise-ships.com](mailto:info@small-cruise-ships.com)

## PRICING

07-Sep-2026 to 17-Sep-2026

Prestige Deck 6	£8059 GBP pp
Prestige Deck 5	£7635 GBP pp
Deluxe Suite	£10475 GBP pp
Deluxe Stateroom	£6569 GBP pp
Superior Stateroom	£6075 GBP pp
Prestige Deck 5 Suite	£12599 GBP pp
Prestige Deck 6 Suite	£13165 GBP pp
Prestige Deck 4	£7275 GBP pp

Port Taxes and Fees. From 673

**ADDITIONAL CHARGES:**

AUD pp