

The Small Cruise Ship Collection

www.small-cruise-ships.com

small-cruise-ships.com

info@small-cruise-ships.com

AUSTRALIA'S GREAT SOUTHERN COASTLINE CRUISE

Set sail on an expedition into Southern Australia's rugged coast into the wild nature, rich history and delicious produce of the region. Cast off from Melbourne to explore the unique natural beauty of Apollo Bay and the famed Twelve Apostles. Learn the history of Port Fairy with its Georgian style merchant homes and visit the character-filled township of Robe. Enjoy many opportunities to sample the freshest produce straight from the source with oysters at Coffin Bay and abalone at Flinders Island. As we round the southwest edge of Australia, enjoy time ashore with sunset drinks at Woody Island, a visit to extraordinary Jewel Cave, swimming with stingrays at Hamelin Bay and walk amongst the vines and sample wines through the Margaret River region.



ITINERARY

DAY 1: DEPART MELBOURNE

Arrive at Outer East Station Pier, Melbourne at 4:00pm, where there is time to settle into your stateroom before our 5:00pm departure. Take the time to become acquainted with all the facilities onboard before joining your fellow explorers on the Sun Deck for Captains Welcome Drinks.

APOLLO BAY

Located along Victoria's Great Ocean Road, Apollo Bay is part of the Great Otway National Park. Explore the natural beauty of this location by strolling the park to spot the 3 cascades of the Triplet Falls and walk to the lookout for panoramic views of the seascape.

12 APOSTLES

View the rugged splendor of the renowned 12 Apostles that lie in the Southern Ocean off Victoria's coast. The limestone cliffs are subject to constant erosion from the impact of storms and winds, which carved the caves in the cliffs. When the caves eroded into arches and collapsed, their 45m high rocky remains

The Small Cruise Ship Collection

www.small-cruise-ships.com

01432 507 280 (within UK)

info@small-cruise-ships.com | small-cruise-ships.com



The Small Cruise Ship Collection

www.small-cruise-ships.com

small-cruise-ships.com

info@small-cruise-ships.com

were left along the shore.

PORT FAIRY

Enjoy a walking town tour of this historic heritage settlement. Grand public buildings sit side by side with restored whalers' cottages and Georgian styled merchant homes. Continue to the infamous Shipwreck Coast. This stretch of coastline is graveyard to around 700 submerged wrecks, leaving behind their fascinating stories. Captain Matthew Flinders notably said he had never seen a 'more fearful section of coastline'.

ROBE

Spend time today in the historic and picturesque town of Robe. Located on the Limestone Coast, it offers incredible views and unique food, drink and shopping opportunities. One of Australia's most character-filled small towns, Robe is known for its cottage industries. Spend your day exploring through the quaint shops and craft breweries or relax on the beach and watch surfers catching a wave.

COFFIN BAY

Here we will hike through the Coffin Bay National Park to get an understanding of the forests and environment - enjoy the interpretation of the heathlands, mallee forest and she-oak woodlands. Discover the tranquil bays and snorkel or kayak with the chance to spot some of the marine life. There is also the opportunity to enjoy an unforgettable wild cuisine experience - enjoy a small boat cruise along the oyster beds to collect your oysters and enjoy them fresh from the sea.

FLINDERS ISLAND

Flinders Island is located about 35km from the Eyre Peninsula Coast and has been owned by the Woolford family since 1979,

where they fish for abalone and are working to establish a safe haven for vulnerable native species. Meet Tobin and Jonas Woolford on Front Beach, learn of the island's history and taste freshly pan-seared abalone. Explore the historic shearing sheds and head to Bryant's Bay to visit the Kapara shipwreck.

BUNDA CLIFFS

For 100km along the Great Australian Bight runs these awe inspiring 120m tall white chalky Bunda Cliffs. This 300m thick limestone slab was once part of an ancient seabed, and now forms the Nullarbor Plain, extending far inland many layers containing many fossils. This is a very rarely explored area of the Australian coastline with over 1000 islands and our visit will be an adventurous exploration of the rocky islands and sweeping beaches of the region.

WOODY ISLAND

Located just 15km off the coast of Esperance, Woody Island's stands of tall trees have given it its name. Surrounded by pristine, clear waters, you will have the opportunity to experience the snorkel trail in Shearwater Bay. The cool southern waters provide excellent visibility for your journey of discovery. There is whaling history throughout the area as well as numerous wrecks, including the second-largest diveable wreck in Australia, the Sanko Harvest, which lays between 18 to 40 metres.

LUCKY BAY

Along quiet Lucky Bay, kangaroos are known to laze on the whitest sand in Australia. Enjoy time on the beach meeting the friendly wildlife and the turquoise water is wonderful for a quick swim. If time permits, enjoy a walk to Thistle Cove, taking in the peaceful beauty of the national park, which is home to pygmy

The Small Cruise Ship Collection
www.small-cruise-ships.com

01432 507 280 (within UK)

info@small-cruise-ships.com | small-cruise-ships.com



The Small Cruise Ship Collection

www.small-cruise-ships.com

small-cruise-ships.com

info@small-cruise-ships.com

possums, western grey kangaroos and many colourful native wildflowers.

ALBANY

Albany is the oldest colonial settlement in Western Australia, predating Perth and Fremantle by over two years. For many years, it was the colony's only deep-water port, having a place of eminence on shipping services between Britain and its Australian colonies. The town has a role in the ANZAC legend, being the last port of call for troop ships departing with infantry and cavalry horses from Australia in the First World War.

AUGUSTA

Augusta is the most south-western town in Australia and is nearby to the towering karri timber of Boranup Forest and spectacular Jewel Cave. We will visit Jewel Cave, an awe-inspiring and extremely well decorated cave, containing many beautiful examples of delicate helictites, cave coral, pendulites, a very large stalagmite called 'The Karri Forest' and beautiful examples of flowstone such as 'The Frozen Waterfall' and 'The Organ-Pipes'. Remarkably, fossilised remains of several Tasmanian Tigers have been discovered within Jewel Cave.

HAMELIN BAY

Located on the southwest coast on a serene open sandy bay, Hamelin Bay is known for the abundance of stingrays which frequent the bay. Snorkel with these friendly giant rays, which can measure up to 2 meters wide, and love to swim up close to snorkellers. Enjoy a guided tour of Cape Leeuwin Lighthouse, the tallest lighthouse on mainland Australia. Climb the tower to be rewarded with a vast seascape with crashing waves and surrounding wilderness. Walk the grounds and explore the beautifully restored heritage site.

ARRIVE FREMANTLE

Arrive in Fremantle at 8:00am as we say goodbye to fellow travellers and crew before a 9:00am disembarkation. A complimentary post-cruise transfers to the airport or CBD will be available.

Please Note:

This itinerary is an indication of the destinations we visit and activities on offer. Throughout the expedition we may make changes to the itinerary as necessary to maximise your expeditionary experience. Allowances may be made for seasonal variations, weather, tidal conditions, and any other event that may affect the operation of the vessel. Coral Expeditions suggests that you do not arrive on the day of embarkation or depart on the day of disembarkation due to any changes that may occur in scheduling.

The Small Cruise Ship Collection

www.small-cruise-ships.com

01432 507 280 (within UK)

info@small-cruise-ships.com | small-cruise-ships.com



The Small Cruise Ship Collection

www.small-cruise-ships.com

small-cruise-ships.com

info@small-cruise-ships.com

YOUR SHIP: CORAL ADVENTURER

YOUR SHIP: Coral Adventurer

VESSEL TYPE:

LENGTH:

PASSENGER CAPACITY:

BUILT/REFURBISHED:

Launched in 2018 with her maiden voyage in 2019, Coral Adventurer has been designed and built to take you closer to unspoilt vistas in comfort, style and safety. A culmination of two years of design and three decades of passion for expedition cruising. BIGGER IS NOT BETTER At a time when cruise ships get larger and glitzier, we remain stubbornly compact and intimate. Our ships are designed to take you to unspoilt destinations not accessible to large ships. We want you to have the luxury of space, dine with whom you please, or find your quiet corner on deck. So Coral Adventurer has just 60 spacious cabins. This preserves the intimate atmosphere we are known for without sacrificing the stability and comfort of a true ocean going vessel. BUILT FOR DISCOVERY The Coral Adventurer features the trademark dual 'Xplorer' tenders cradled on a hydraulic platform slung off the back of the ship, enabling our guests to go ashore in comfort and ease. The shallow draft of the ship enables us to go closer to shore than larger ships. Together with a renowned expedition team, this new ship will offer the most advanced expedition capabilities of any small ship afloat. BUILT FOR COMFORT With active stabilisers dampening sea motion, mostly balcony cabins, and interiors designed with the colours and

textures of tropical Queensland, the Coral Adventurer is a comfortable ship. She features promenade decks, generous communal areas that accommodate all guests, a passenger elevator, and an open kitchen where you can observe our chefs whip up small batch cuisine from locally sourced ingredients. BUILT FOR PERSONAL SERVICE The Coral Adventurer will continue a proud tradition of Australian flagged vessels with friendly and professional Australian crew. The onboard atmosphere remains refreshingly informal and intimate. Take your seat at our bridge lounge, chat with the captain at your leisure or accompany our chefs on a market tour. Food and wine features Single seating dining area with communal 'wine table' finished with Australian stone; serving buffet breakfast and lunch, and multi-course table d'hote dinners Showcase galley visible to guests for fresh small-batch cuisine featuring Australian produce Multiple indoor and outdoor bars, including the Explorer bar on the sundeck for sunset drinks with 180 degree views Curated wine cellar featuring modestly priced boutique wines for daily drinking and exceptional vintage Australian reds. Guest comfort All outside guest cabins with en-suite bathrooms; majority have private balcony Active stabilisers to dampen sea motion Gym equipped with elliptical trainers and treadmills Passenger elevator Wi-Fi available in all

The Small Cruise Ship Collection
www.small-cruise-ships.com

01432 507 280 (within UK)

info@small-cruise-ships.com | small-cruise-ships.com



guest areas

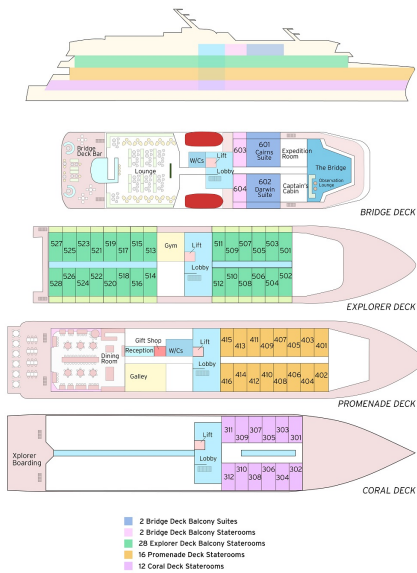
The Small Cruise Ship Collection

www.small-cruise-ships.com

small-cruise-ships.com

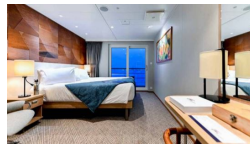
info@small-cruise-ships.com

INSIDE YOUR SHIP



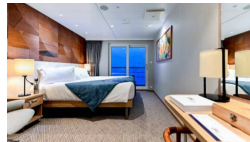
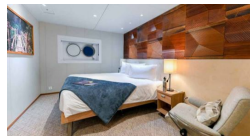
BRIDGE DECK BALCONY STATEROOM

BRIDGE DECK BALCONY SUITE

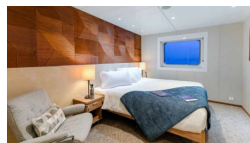


CORAL DECK STATEROOM

EXPLORER DECK BALCONY STATEROOM



PROMENADE DECK STATEROOM





The Small Cruise Ship Collection

www.small-cruise-ships.com

small-cruise-ships.com

info@small-cruise-ships.com

PRICING

31-Jan-2025 to 15-Feb-2025

BRIDGE DECK BALCONY STATEROOM	£9414 GBP pp
EXPLORER DECK BALCONY STATEROOM	£8608 GBP pp
PROMENADE DECK STATEROOM	£6456 GBP pp
BRIDGE DECK BALCONY SUITE	£12107 GBP pp
CORAL DECK STATEROOM	£5380 GBP pp