

The Small Cruise Ship Collection

www.small-cruise-ships.com

small-cruise-ships.com

info@small-cruise-ships.com

AUCKLAND TO SINGAPORE ALL INCLUSIVE 35 DAY LUXURY CRUISE

From Auckland's city of sails to Singapore's futuristic vision, this cruise offers stunning vistas from start to finish. Start with an in-depth discovery of New Zealand, where you'll drink everything from Maori culture to cosmopolitan cool. Tasmania, complete with its eponymous devils, comes next, then it's a day at sea to Sydney. Sweep upwards along the Gold and Sunshine Coasts next, clinging to the continent's coasts all the way to Darwin. Finally, sail across the Timor Sea for beautiful Bali and Borobudur.



ITINERARY

Day 1 Pre Cruise

Day 2 Auckland NEW ZEALAND

Blending beachy recreation with all the delights of a modern, diverse and thoroughly multicultural city, Auckland sits on the lucid blue-green waters of New Zealand's north island. Known as the 'City of Sails', its two harbours will tempt you with waterfront

The Small Cruise Ship Collection
www.small-cruise-ships.com

01432 507 280 (within UK)

info@small-cruise-ships.com | small-cruise-ships.com



The Small Cruise Ship Collection

www.small-cruise-ships.com

small-cruise-ships.com

info@small-cruise-ships.com

walks, and the chance to breathe fresh sea air deep into your lungs while absorbing spectacular views of Auckland's grand harbour bridge's span. Take in the true scale of Auckland's magnificent cityscape by ascending 192 metres to the Sky Tower, and looking out over the city's gleaming silver towers, which reflect on the abundant waters below. Views over the bay and adjacent islands await, and you can share elegant cocktails at this dizzying height, above the mingling yachts of Viaduct Harbour. Immerse yourself in the rich history and culture of the area at Auckland Art Gallery, Toi o Tmaki. Set beside tranquil fountains and handsomely landscaped flowerbeds of Albert Park, the French-Renaissance building houses New Zealand's most extensive art collection, and exhibits works from Mori and Pacific artists. New Zealand is world-renowned for its captivating natural scenery, and day trips across the sparkling bays, to nearby islands like Waiheke, Tiritiri Matangi, and Rangitoto, are always tempting. Discover lava caves, grape-laden vineyards and flourishing wildlife in the Hauraki Gulf's islands. You'll also find an exceptional 360-degree panorama over the city, to the horizon beyond, from the heights of ancient Mount Eden. The spectacular dormant volcano rises improbably from a city suburb, and also lends its name to Eden Park - the unusual, translucent stadium of New Zealand's mighty All Blacks.

Day 3 Tauranga NEW ZEALAND

Tauranga is New Zealand's sunny capital - with wide sweeping beaches and surfers curling across cresting waves. Climb to the top for spectacular views of the natural harbour, or take winding coastal footpaths to explore the unfolding scenery. An entry point to the vast indent of the Bay of Plenty, the volcanic peak of Mount Maunganui is a fittingly dramatic welcome. Brooding, geothermal energy creates spectacular natural attractions

across this region, while plunging waterfalls, and fascinating Maori culture ensures that the Bay of Plenty has a lot to offer visitors. Said to receive New Zealand's highest amount of sunshine, the hanging kiwi, citrus fruit and avocados add an exotic touch to the area's landscape - especially around Te Puke. Vibrant teal and orange colours await at the stunning geothermal area of Whakarewarewa Thermal Reserve, where mud pools bubble and steam rises from the earth. There are more hot pools, and some of the country's best scenery, at Lake Rotoiti - where you can kayak across the smooth surface and enter a cave that glows gentle blue, with its darkened roof illuminated by glittering glow worms. Enter New Zealand's fantasy world, with a visit to some of the country's celebrated filming spots - which have featured as doubles for JRR Tolkien's Middle Earth's fantasy settings. Offshore, the wonderful White Island's volcanic cone peeks from the waves, and New Zealand's most active volcano certainly knows how to put on a show, belching out smoke across the water.

Day 4 Gisborne NEW ZEALAND

With a population of around 35,000 and located on the north island, Gisborne exudes history at every turn. Maori for "Great standing place of Kiwa", Kiwa was a leading figure aboard the Maori ancestral canoe, Takitimu, which ran aground in Gisborne around 1450 AD. After landing, Kiwa became a coastal guardian, eventually marrying Parawhenuamea, the keeper of the streams. The union point of three rivers and the first place to see the sun, the city is filled with light and laughter and gracefully squeezes surfer's beaches with the district's colonial past. Captain Cook made his first landfall here, John Harris set up his first trading station in the then village and today, Gisborne is the major centre of Maori cultural life. Suffice to say then that

The Small Cruise Ship Collection
www.small-cruise-ships.com

01432 507 280 (within UK)

info@small-cruise-ships.com | small-cruise-ships.com



The Small Cruise Ship Collection

www.small-cruise-ships.com

small-cruise-ships.com

info@small-cruise-ships.com

the city is a watery wonderland. With its picture perfect beaches, what savvy traveller does not want to add being among the first people in the world to say they have watched the sky change colour as the sun bursts from out of the sea. A place of nature, spectacular beach cliff views are all just part and parcel of everyday life here, and easy walks from the centre of town to the Titirangi Reserve will award you with yet more unbelievable 180° vistas from Poverty Bay to Gisborne City; stretch your eyes with the panorama, while stretching your legs on one of the many enjoyable walks. A perfect place to stroll, amble and wander, like much of New Zealand Gisborne keeps a healthy respect for history and nature and enjoys a very laid back feel.

Day 5 Napier NEW ZEALAND

Sip the fine wines of legendary producers, visit Cape Kidnappers' crowds of birdlife, and wander the stylish streets of the world's art deco capital, during your time in handsome Napier. Located on the huge arc of Hawke's Bay, Napier enjoys a generous Mediterranean style climate and a breezy cafe culture. A green, outdoor town, wander Marine Parade, which borders the rich blue Pacific and invites you to stroll along a tree-lined two-mile seafront. Take the gentle hike up to Bluff Hill, for panoramic views over the lively Napier Port and out towards Cape Kidnappers - given its name following a clash between Captain Cook's settlers and the local Maori population. Here you'll encounter one of the world's largest mainland gannet colonies creating a colourful cacophony by the sea. Set on sheer cliffs, the golden-headed birds are an incredible sight, swirling overhead and dancing before you. The city's renowned Art Deco architecture glows in the sunshine of New Zealand's North Island. Built following the devastating 7.8 magnitude earthquake, which ripped through the region in 1931. The

rebuild, in the architectural fashion of the time, has left an authentic treasure-trove of 30s style buildings. Grapes thrive in the warm, dry climate of Napier and Hawke's Bay, which is one of New Zealand's oldest wine regions. Swirl glasses in waterfront bars or head out to walk among the vineyards of pinot gris and syrah grapes, learning of the climate conditions that help add sophisticated flavour to every bottle.

Day 6 Wellington NEW ZEALAND

Sprawling around a hook-shaped peninsula, Wellington is a vibrant and energetic seaside capital. A compact, well-stocked city of buzzing bars and chatting cafes, New Zealand's capital is a bright and breezy place with an infectious, easy-going atmosphere. Known as the creative hub of the South Pacific, there are shows to see, art installations to enjoy, and rich flavours to savour here. The sounds of rare and beautiful birdlife fill the hills around the city, and the bush of the green belt provides easy-to-access sanctuary, strolls and cycle rides. The Botanical Gardens break up the buildings, even more, while an iconic, cherry-red cable car rumbles up Wellington's slope to the city's best viewpoint, looking out over the city's scenic harbour from above. Zealandia has provided an urban home for rare and endangered birdlife, bringing many species back from the brink. Varied museums cover everything from Maori traditions to earthquake simulations and even the real-life Kraken - a displayed colossal squid. Wellington is only New Zealand's third-biggest city, but spend some time here and you'll realise that's a blessing. Eminently strollable, you can stop in at countless cool cafes to top up your caffeine levels whenever your energy is flagging - the smell of a fresh artisan espresso is never far away. The wines grown nearby are revered, and the city's craft beers are also making waves. Wander the breezy

The Small Cruise Ship Collection
www.small-cruise-ships.com

01432 507 280 (within UK)

info@small-cruise-ships.com | small-cruise-ships.com



The Small Cruise Ship Collection

www.small-cruise-ships.com

small-cruise-ships.com

info@small-cruise-ships.com

waterfront, and admire the surfers riding the wind-whipped rollers of the self-proclaimed 'coolest little capital in the world'.

Day 7 Lyttelton (Christchurch) NEW ZEALAND

New Zealand's 'Garden City' is a place of quiet streets, leafy parks and beautiful tree-lined boulevards. Christchurch has an unmistakable English flavour to it, and serves as the gateway to southern New Zealand's natural wonders. The rebuild of the country's oldest city continues apace - following the earthquakes that devastated it in 2011 - and the South Island's biggest city is now blossoming, having evolved into a confident and cultural powerhouse. Colourful street art adds an edge to the city, while shiny new bars and restaurants contribute to the sense of revitalisation and renewal. Visit museums, and take tours to learn more of the reconstruction, which has made incredible progress in recent years. The old-time charm of a punt on the River Avon is still a quintessential Christchurch experience. Sail amid weeping willows drooping to the water, as you drift through a blur of colours in the botanical gardens. Surrounded by extinct volcanoes, soaring lakes, and the rolling farmlands of the Canterbury Plains, spectacular scenery sprawls around the city. Pay a visit to the Southern Alps' snow-covered peaks, the stunning hot pools and rushing streams of Hanmer Springs, or the Hector's dolphins who swim at Akaroa. A city that has faced immense challenges - both natural and manmade - over the last decade, it's hard not to feel inspired by Christchurch's defiant character and friendly people, who share an open and welcoming outlook that shines stronger than ever.

Day 8 Dunedin (Port Chalmers) NEW ZEALAND

The south-easterly coast of New Zealand's wild southern island is a haven for outdoor adventures, with masses of raw scenic beauty and thrilling coastline. Heading the Otago Harbour,

Dunedin is a cosmopolitan city of culture and architectural splendour, with a distinctly tartan flare. Settled by the Scots in 1848, the romantically misty valleys and moody landscapes, continue to capture the hearts of visitors to these distant shores. Searing bagpipes echo down the streets in the Edinburgh of the South, which wears its Scottish origins proudly. Gothic revival architecture is scattered liberally, including the magnificent university - with its glorious clocktower - and the city's grand cathedral. Head to the elegant Octagon to see the statue to Robert Burns, whose nephew was a city founder. The railway station is perhaps the pick of this city's many artistic structures. Its glowing gardens and pretty mosaics add extra detail to the elegant, gingerbread building. It's also the perfect jumping-off point for romantic rail adventures along the coastline. The melodramatic coastline of the Otago Peninsula boasts dramatic cliffs and sea-sprayed beaches, as well as an abundance of animals. Explore cliffs laced with tunnels and hidden walkways, to get you up close and personal with Yellow-eyed penguins. Sea lions and seals also sprawl out on windswept beaches, drifting in and out of indulgent dozes. The south island's second-largest city regularly receives a top-up of youthful energy thanks to its healthy student population. Not that Dunedin is lacking a distinctly quirky personality of its own, as showcased by the event where locals race thousands of chocolate orbs down the world's steepest street - Baldwin Street. Museums in the city tell of Chinese influences, as well as the stories of early Maori settlers. Round off an active day sampling a South Island institution - an icy beer from Speight's Brewery.

Day 9 Cruising Milford Sound NEW ZEALAND

Named after Milford Haven in Wales, Milford Sound is not a sound but a fjord, yet the name has stuck. In 1998 the Maori

The Small Cruise Ship Collection

www.small-cruise-ships.com

01432 507 280 (within UK)

info@small-cruise-ships.com | small-cruise-ships.com



The Small Cruise Ship Collection

www.small-cruise-ships.com

small-cruise-ships.com

info@small-cruise-ships.com

name Piopiotahi has been added and officially it should be written as Milford Sound/Piopiotahi. The local name refers to the extinct New Zealand Thrush (the piopio). Milford Sound sits within South Island's Fiordland National Park, one of the four national parks forming the UNESCO World Heritage site "Te Wahipounamu" -pounamu being the local greenstone highly estimated for carvings by the Maori. The fjord has a length of approximately 16 kilometers and a depth of more than 290 meters. Steep cliffs, several impressive waterfalls and dense rainforest characterize the fjord. Halfway down the fjord is Stirling Falls, the second tallest. Near the end of the sound the U-shaped Sinbad Gully and the famous Mitre Peak which rises to a height of 1,692 meters can be seen, while on the eastern side is Lady Bowen Falls, at 162 meters the tallest of the falls. The Piopiotahi Marine Reserve protects the flora and fauna in the water. Apart from bottlenose dolphins in the fjord, New Zealand fur seals can be seen resting on Seal Rock on the northern shore, while on the opposite side is a Fiordland Crested Penguin site.

Days 10 - 11 Day at sea INTERNATIONAL WATERS

Days at sea are the perfect opportunity to relax, unwind and catch up with what you've been meaning to do. So whether that is going to the gym, visiting the spa, whale watching, catching up on your reading or simply topping up your tan, these blue sea days are the perfect balance to busy days spent exploring shore side.

Day 12 Hobart, Tasmania AUSTRALIA

Mount Wellington's looming, cloud-wisped form is an ever-present sight as you explore booming Hobart, the cosmopolitan capital of Australia's most southerly state. A former British penal colony, nowadays Australia's second-oldest

city is a place to live the free and easy life. Encircled by dramatic cliffs, landscaped gardens and rolling vineyards, Hobart is also well stacked with cultural pursuits including museums, and respected - if controversial - galleries plastering new and old art to their walls. With fresh sea breezes and a fabulous location, Hobart is a creative place, where you can browse the produce of local artisans in Saturday's massive Salamanca Market - which draws visitors from all across Tasmania and beyond. Eat at waterfront restaurants, or rise up Mount Wellington's slopes to appreciate the remoteness of Hobart's location. From this elevated platform, you can look down across views of flowing forests, undulating mountains and endless ocean swallowing up the city. Further away, animal sanctuaries introduce you to the island's famous inhabitants, including the famous Tasmanian devil. Thirsty? Hobart has a long brewing tradition - so enjoy a refreshing ale poured from the country's oldest brewery. The climate's blend of generous sunshine and cool Antarctic breezes helps Hobart to produce its acclaimed wines, and thick clumps of pinot noir grapes hang from vineyards dotted along the valleys nearby. Taste the wines, accompanied by a platter of artisan cheese and sausage. Whiskey aficionados aren't left in the cold either, with international award-winning distilleries close by.

Day 13 Port Arthur, Tasmania AUSTRALIA

Port Arthur, a historically somber UNESCO World Heritage site, sits in over 40 hectares of beautiful, landscaped grounds, close to the Tasman National Park, itself famed for its dramatic beauty. Today, Port Arthur brings the story of Australia's colonial history to life through stories of the very people who lived here. A major site for punishing transported convicts who had further offended since deportation, many thousands of prisoners

The Small Cruise Ship Collection
www.small-cruise-ships.com

01432 507 280 (within UK)

info@small-cruise-ships.com | small-cruise-ships.com



The Small Cruise Ship Collection

www.small-cruise-ships.com

small-cruise-ships.com

info@small-cruise-ships.com

passed through the penal colony at one time or another. Throughout its history it has been a place of both torturous punishment and for some of the luckier ones, educational opportunity. Partly restored ruins of the colony and church, built with great skill by convicts in the 1830's and the aptly named Island of the Dead, an island cemetery for convicts, are today prime attractions. This is a place jam packed with history, vividly brought to life by well informed guides and displays, it's a moving and engrossing visit. In sharp contrast to the convicts, visitors are free to wander and explore. Turn up after dark, to look for evidence of the spookier side of Port Arthur, as part of the very popular ghost tour - Lit only by lanterns, the tour takes you through some of the most infamous buildings, quite different at nightfall. The guides will fill you in on some of the stranger goings on that have been noted in what is considered the most haunted place in Australia. The daily tourists departed, the long gone seem really quite close!

Day 14 Burnie AUSTRALIA

Breathe in deep - here in Burnie, you're tasting untouched air that is some of the cleanest anywhere in the world. Nearby Cradle Mountain once registered some of the world's purest air - and the breezes here are purified by miles of uninterrupted ocean, stretching south to Antarctica. Tasmania itself is a place of sweeping National Parks, soaring granite mountain ranges and lakes reflecting spectacular scenery in glass-smooth surfaces. With dense eucalyptus forests coating the hills, and hikes rewarding with deserted sandy beaches, it's no surprise that Burnie life revolves around getting outdoors and exploring the natural splendour of this shield-shaped island state of Australia. If mountain hikes sound a little strenuous, spend some time getting to know the island's adorable wildlife. Visit

Fern Glade Reserve to see the spade-like beaks of platypuses gliding through the waters, or the Little Penguin Observation Centre where Burnie's own colony of adorable penguins waddle playfully. West Beach's golden sand is also close by, perfect for lying back and soaking up some sun, or for watching on as surfers skip across the curling waves. Burnie has always been a place where things get made - in the past this came with a tinge of grey industry, but the city has now reinvented itself as a hotspot for all things creative. View the island's most revered works, learn how to fold your own paper creations in workshops, and marvel at skilled local creators working hard in their studios at the Maker's Workshop. Great food is also on this maker's city's agenda - feast on freshly shucked oysters, and award-winning cheeses. Later, you can toast the artisan spirit of Burnie with a glass of cool climate wine, or by swirling a nightcap of single malt - some of the world's best whiskeys are produced here.

Day 15 Day at sea INTERNATIONAL WATERS

Days at sea are the perfect opportunity to relax, unwind and catch up with what you've been meaning to do. So whether that is going to the gym, visiting the spa, whale watching, catching up on your reading or simply topping up your tan, these blue sea days are the perfect balance to busy days spent exploring shore side.

Day 16 Sydney AUSTRALIA

With its glorious harbour, lavish golden beaches and iconic landmarks, Sydney is Australia's showpiece city. Creative and curious, discover the world-class cuisine, indigenous culture, and irresistible beach life that make Sydney one of the world's most dynamic, exciting destinations. Sydney's sparkling harbour is the heart of a richly cultural city. Overlooked by the metallic

The Small Cruise Ship Collection
www.small-cruise-ships.com

01432 507 280 (within UK)

info@small-cruise-ships.com | small-cruise-ships.com



The Small Cruise Ship Collection

www.small-cruise-ships.com

small-cruise-ships.com

info@small-cruise-ships.com

curves of the masterpiece of an Opera House, and that grand arched harbour bridge. Take it all in from the water, and admire the iconic landmarks, which are set before the city's gleaming skyline backdrop. If you're feeling adventurous, take the legendary climb up the smooth curve of the bridge - nicknamed the Coathanger - to soak in the shining city's spread from a unique perspective. Spread out to tan on one of the world's most famous stretches of sand - Bondi Beach. Restaurants and bars burble away in the background, while the sun beams down, and surfers curl and leap over pure rollers. Swim in spectacular salty ocean pools, or wander the beautiful Bondi to Coogee coastal walk for more of this sun-gorged stretch of prime coastline. Leaving the thrills of Australia's largest city behind is surprisingly simple - take to the skies to be flown above skyscrapers and rippling ribbons of waves, out to majestic peaks, sheer cliffs and iconic rock formations - like the Three Sisters of the Blue Mountains. Or, drop in on wildlife sanctuaries caring for the country's animals - from hopping kangaroos to adorably cute, cuddly koalas.

Day 17 Day at sea INTERNATIONAL WATERS

Days at sea are the perfect opportunity to relax, unwind and catch up with what you've been meaning to do. So whether that is going to the gym, visiting the spa, whale watching, catching up on your reading or simply topping up your tan, these blue sea days are the perfect balance to busy days spent exploring shore side.

Day 18 Brisbane AUSTRALIA

They don't call it the Sunshine State for nothing, and Brisbane's modern metropolis fully exploits its sun-blessed location, basking in Queensland's generous year-round glow. The envied climate makes Brisbane a city of outdoor adventure, activity and

relaxation, where days drift by surfing rollers, or relaxing in the shade of swaying palms. While Brisbane may play second fiddle to Sydney and Melbourne at times, it radiates a creative and contemporary energy, offering visitors a refreshing combination of laidback waterfront luxury and urban sophistication. Sandy islands nearby provide scenic diving and oceanside relaxation opportunities, while the city's animal sanctuaries offer opportunities to meet unbearably cute koalas and kangaroos. Brisbane's impressive skyline of metallic cylinders rises high above the broad Brisbane River below, which curves lazily through downtown. The rolling waves of the Pacific are close by, but there's something special about relaxing on soft sand in the very heart of the city, on the beautifully executed South Bank Parklands man-made beach. With golden sand and shallow lagoon waters to cool off in, it's a dreamy spot to lie back with a book, amid the landscaped gardens. Nestled in a river meander of its own, Brisbane Botanic Park glows with colour, tropical plants and wading ibis birds, and is easily walkable from the Parklands. The South Bank is the cultural hub of city, and houses the celebrated Queensland Gallery of Modern Art - a surreal and vibrant jaunt through contemporary Australian art. The city's award-winning restaurants also serve up elite food, matched with generous splashes of wine, direct from the nearby Granite Belt's wine regions.

Day 19 Day at sea INTERNATIONAL WATERS

Days at sea are the perfect opportunity to relax, unwind and catch up with what you've been meaning to do. So whether that is going to the gym, visiting the spa, whale watching, catching up on your reading or simply topping up your tan, these blue sea days are the perfect balance to busy days spent exploring shore side.

The Small Cruise Ship Collection
www.small-cruise-ships.com

01432 507 280 (within UK)

info@small-cruise-ships.com | small-cruise-ships.com



The Small Cruise Ship Collection

www.small-cruise-ships.com

small-cruise-ships.com

info@small-cruise-ships.com

Day 20 Townsville AUSTRALIA

Basking in 320 sunny days a year, Townsville is a welcoming, sun-soaked slice of tropical Australia. Venture to this remote city on the cusp of the tropics, to meet adorable animals, explore gorgeous coastal islands and soak up the reliable sun's bronzing glow. Rise to the rosy rock of Castle Hill - the views down over the sparkling coastal setting, and islands waiting beyond form an amazing welcome. Located on Queensland's north-east coast, the city's bay arcs around Magnetic Island - which lies just a scenic 20-minute ferry ride away. An island sanctuary of beautiful dive sites - set amid vibrant reefs and secluded beach coves - it is one of Townsville's most exquisite natural assets. The island's national park is adorned with wildlife, and you can meet more of Australia's famous residents at the family-owned Billabong Sanctuary - which cares for kangaroos, crocodiles, wallabies and more. Townsville's vast aquarium brings the magic of the region's glittering reefs to land, and the largest reef aquarium in the world ensures that even non-divers can enjoy an authentic insight into the colourful life that blossoms offshore. Visit the beaches of lush tropical islands, or wander Townsville's pretty seaside streets and The Strand's waterfront - lined with charming 19th-century architecture and plenty of inviting cafes and alfresco eateries. Learn more of North Queensland's indigenous Bindal and Wulgurukaba communities, as you witness cultural performances, or peruse Townsville's galleries, which showcase extraordinary indigenous arts. Join the locals, to feel the region's sporting passion, as a wall of noise greets the North Queensland Cowboys rugby league team, as they take to the field here in Townsville.

Day 21 Cairns AUSTRALIA

Warmly welcoming you to the natural wonders of the Great Barrier Reef, Cairns is a treasure trove of rich tropical beauty and incredible sea life. Swathes of rainforest spread out to the north, where you can soar over the canopy in a cable car, before looking down over narrow channels of water plummeting down gorges and crocodile-filled waterways. The diverse lands of the Atherton Tableland lie to the west, but it's the crystal-clear waters - and life-filled reefs - of Cairns' remarkable underwater world that draws universal adulation. Priding itself as the Gateway to the Great Barrier Reef, explore Cairns' constellation of colour, as you dive into the world's largest and most spectacular underwater universe. Cairns is huddled in amongst abundant swathes of rainforests, which give way to glorious crescents of golden beach. Kuranda - with its scenic railway and heritage market stalls - waits to be discovered, cloaked within the depths of the rainforest. Learn of the indigenous people of North Queensland during cultural performances, and hear the throaty reverberations of diggeridoos, as you hear eternal stories handed down through time, from generation to generation. Back in Cairns, there's always time for a coffee or a beer, or a feast on fresh oysters with glasses of Cairns' white wines - boldly flavoured with mango and banana notes.

Day 22 Day at sea INTERNATIONAL WATERS

Days at sea are the perfect opportunity to relax, unwind and catch up with what you've been meaning to do. So whether that is going to the gym, visiting the spa, whale watching, catching up on your reading or simply topping up your tan, these blue sea days are the perfect balance to busy days spent exploring shore side.

Day 23 Thursday Island AUSTRALIA

The Small Cruise Ship Collection

www.small-cruise-ships.com

01432 507 280 (within UK)

info@small-cruise-ships.com | small-cruise-ships.com



The Small Cruise Ship Collection

www.small-cruise-ships.com

small-cruise-ships.com

info@small-cruise-ships.com

Thursday Island – TI to locals or Kawrareg in Waiben dialect – is the ultimate Aussie retreat. Grab a cold beer, find a spot on a wooden pub deck overlooking turquoise blue seas and contemplate the remote beauty of the island. Whilst certainly not the biggest of the Torres Strait Islands, it is the most populated. That is not to say it's a bustling metropolis. At last count, there were fewer than 3,000 residents for its 3.5 km². The Torres Strait Islands is a 274-strong archipelago found scattered between the coasts of mainland Oz and Papua New Guinea. The origin of the name is unknown; what is certain however is that Captain Owen Stanley named neighbouring islands Tuesday, Wednesday and Friday when he visited in 1848, so it is a safe assumption that he named Thursday too. Thursday and Friday's names were swapped about 8 years later so they appeared in weekday order. Budding explorers should note that Monday, Saturday and Sunday have yet to be found, so perhaps this could be your lucky day. The island enjoyed a lucrative pearl and shell trade until WWII, and many Japanese pearl divers became residents. This worked out well for the islanders; Thursday Island was mercifully left alone by during the extensive WWII bombings, probably because it was thought that there were Japanese nationals still living there (there weren't). Superb and pristine example of the island's heritage still stand, and can be seen in the Green Hill Fort, the Thursday Island Customs House and the Gab Titui Cultural Centre.

Days 24 - 25 Day at sea INTERNATIONAL WATERS

Days at sea are the perfect opportunity to relax, unwind and catch up with what you've been meaning to do. So whether that is going to the gym, visiting the spa, whale watching, catching up on your reading or simply topping up your tan, these blue sea days are the perfect balance to busy days spent exploring shore side.

Day 26 Darwin AUSTRALIA

"Australia's capital of the north is a uniquely tropical city, and a historically isolated outpost of this vast, diverse country. Reaching up towards the equator, a full 2,000 miles from Sydney and Melbourne, the city was named in honour of Charles Darwin by the British settlers who established a frontier outpost here. With a unique history, beautiful islands nearby, and a palette of sizzling Pacific flavours, colourful Darwin is an enchanting and exotic Australian destination. Crocodiles patrol the jungled waterways and tropical rainforests around Australia's gateway to the Top End. Explore via airboat to look down on the veiny waterways of the mist-laced Kakadu National Park. The sounds of chattering birdlife and the gentle splash of fountains and waterfalls will fill your ears in George Brown Darwin Botanic Gardens. Soak it all in, before kicking back and relaxing with a picnic and a crackling barbecue. The sunshine and famous tropical pink sunsets mean many visitors naturally gravitate to the city's soft sands to relax at spots like pretty Mindil Beach, as evening approaches. The adjoining market is filled with souvenirs and crafts stands and is the perfect great place to enjoy some fiery Asian flavours. Stroll the stalls, grab some food, and crack open an ice-frosted beer as the sunset show begins. It may be remote, but Darwin found itself on the front line during the Pacific War, as the Japanese air force unloaded their bombs onto the city in 1942. This relaxed unassuming city has a deeply resilient backbone, however, and you can explore the museums to learn more of the war's impact on Darwin, as well as the devastating effects of one of Australia's worst natural disasters, Cyclone Tracy in 1973."

Days 27 - 28 Day at sea INTERNATIONAL WATERS

Days at sea are the perfect opportunity to relax, unwind and catch up with what you've been meaning to do. So whether that

The Small Cruise Ship Collection

www.small-cruise-ships.com

01432 507 280 (within UK)

info@small-cruise-ships.com | small-cruise-ships.com



The Small Cruise Ship Collection

www.small-cruise-ships.com

small-cruise-ships.com

info@small-cruise-ships.com

is going to the gym, visiting the spa, whale watching, catching up on your reading or simply topping up your tan, these blue sea days are the perfect balance to busy days spent exploring shore side.

Day 29 Benoa, Bali INDONESIA

Bali. A.k.a. Island of the Gods, Land of a thousand temples or the World's last paradise. As superlative as these monikers may sound, they do not do justice to the actual reality of the island. Bali is as good as everyone says – verdant mountains with terraced rice fields in one direction, black sand beaches in another and captivating people that will leave even the most seasoned traveller humbled. If you're looking for a Garden of Eden that really does have it everything, Bali ticks all the boxes. The rich and diverse culture of the island is what sets Bali apart from Indonesia's (many) other tropical paradises. The country's estimated 10,000 Buddhist-Hindu temples, with their daily offerings of lotus flowers and fruit are testament to the gentleness of the islander's belief. Then there is the vibrant arts and crafts scene, notably in Ubud in the centre of the island, but prolific everywhere. Ideal souvenirs to bring back range from gorgeous silver jewellery to intricate wood carvings. Additionally, do try to see a traditional dance if possible, particularly if accompanied to local gamelan music. No one could mention Bali without mentioning the food. Dishes range from elaborate meals to street food bites, but all are without exception ambrosia. Do not miss out on tasting a succulent chicken satay, betutu (apparently the King's favourite meal) and sambal matah. But whatever you decide to discover, you can be assured of a taste sensation that will remain with you long after you have returned home.

Day 30 Day at sea INTERNATIONAL WATERS

Days at sea are the perfect opportunity to relax, unwind and catch up with what you've been meaning to do. So whether that is going to the gym, visiting the spa, whale watching, catching up on your reading or simply topping up your tan, these blue sea days are the perfect balance to busy days spent exploring shore side.

Day 31 Semarang (Gateway for Borobudur) INDONESIA

See a wonder of the world rising from Central Java - as you encounter the majestic Borobudur Temple, the largest Buddhist monument in existence. Hidden from the world for hundreds of years, below the ash of a vast volcanic eruption, it stands in all of its restored glory, with Mount Merapi looming imposingly behind. Semarang itself mainly functions as a gateway for Borobudur, but its port was a vital one for the Dutch colonisers, and the city continues to be a bustling centre of Java life. Hang around to discover Semarang's collection of colonial churches, and the towering Avalokitesvara Pagoda, which reaches up seven tiers into the city's skies. A soaring UNESCO World Heritage Site, the sprawling Borobudur Temple covers 123 square metres of land and was completed in the 9th century. Learn of its mysteries and secrets, and of the abandonment and eruption, which would conceal it from view for hundreds of years. Built by the Syailendra dynasty - which ruled in Java for 500 years - the lotus flower-shaped temple was restored to its former glory in the 1970s and features three layers, stacked up with intricate carvings. The monuments represent key Buddhist beliefs relating to the process of attaining Nirvana. Indonesia's largest Hindu temple also rises nearby, in the form of Prambanan Temple. Another lost UNESCO World Heritage Site, its soaring stone spires date back to the 9th century.

Day 32 Day at sea INTERNATIONAL WATERS

The Small Cruise Ship Collection

www.small-cruise-ships.com

01432 507 280 (within UK)

info@small-cruise-ships.com | small-cruise-ships.com



The Small Cruise Ship Collection

www.small-cruise-ships.com

small-cruise-ships.com

info@small-cruise-ships.com

Days at sea are the perfect opportunity to relax, unwind and catch up with what you've been meaning to do. So whether that is going to the gym, visiting the spa, whale watching, catching up on your reading or simply topping up your tan, these blue sea days are the perfect balance to busy days spent exploring shore side.

Days 33 - 34 Singapore SINGAPORE

Advanced, airy and elevated, Singapore is a spectacular, futuristic vision of utopian city life. A healthy population of almost six million call it home, but this is a city designed with space to breathe, and gorgeous outdoor parks, massive indoor greenhouses and beautiful recreational spaces spread between the City of Gardens' skyscrapers and soaring structures. Once a quiet fishing village, now a glistening island city-state and an international beacon of science, education and technology. Singapore is almost intimidatingly clean - and the hyper-efficient public transport system whips residents and visitors across the city's neighbourhoods in a heartbeat. Glorious fountains and audacious skyscrapers loom up - nodding to traditional feng shui beliefs - and putting on dazzling illuminated displays after dark. The lush green botanical gardens are a spectacular UNESCO World Heritage Site, covering 52 hectares and decorated with impressive colourful orchids. Or breathe in more of the freshest air by heading up to wander the canopy strung bridges of MacRitchie Reservoir Park. Head for the iconic Marina Bay - a landmark of the city crowned by three interconnected towers, which watch out over island sprinkled waters. Jaunt between Little India and the atmospheric Chinatown in minutes, where beautiful temples - like the Chinese Thian Hock Keng Temple and Hindu Sri Mariamman Temple add rich cultural intrigue. Singapore's cuisine is a

mouthwatering fusion of its Indian, Chinese, Indonesian, and Malay influences, taking and enhancing the best of each. Enjoy dishes in towering restaurants, or toast the glowing skyline with the city's eponymous gin-soaked cocktail - a Singapore Sling.

Day 35 Post Cruise

Please note:

Itineraries are subject to change.

The Small Cruise Ship Collection

www.small-cruise-ships.com

01432 507 280 (within UK)

info@small-cruise-ships.com | small-cruise-ships.com



The Small Cruise Ship Collection

www.small-cruise-ships.com

small-cruise-ships.com

info@small-cruise-ships.com

YOUR SHIP: SILVER MUSE

YOUR SHIP:

Silver Muse

VESSEL TYPE:

LENGTH:

PASSENGER CAPACITY:

BUILT/REFURBISHED:

Silversea Cruises is happy to present our new flagship, Silver Muse. Delivered in spring of 2017, the new ultra-luxury ship was built by Fincantieri and at 40,700 grt accommodates 596 guests. Representing an exciting evolution of Silver Spirit, Silver Muse redefines ultra-luxury ocean travel - enhancing the small-ship intimacy and spacious all-suite accommodations that are the hallmarks of the Silversea experience. The addition of Silver Muse expands Silversea's fleet to nine ships, and once again significantly raises the bar in the ultra-luxury cruise market with a wealth of enhancements to the onboard experience, while satisfying the uncompromising requirements for comfort, service, and quality of the world's most discerning travellers.



The Small Cruise Ship Collection

www.small-cruise-ships.com

01432 507 280 (within UK)

info@small-cruise-ships.com | small-cruise-ships.com

The Small Cruise Ship Collection

www.small-cruise-ships.com

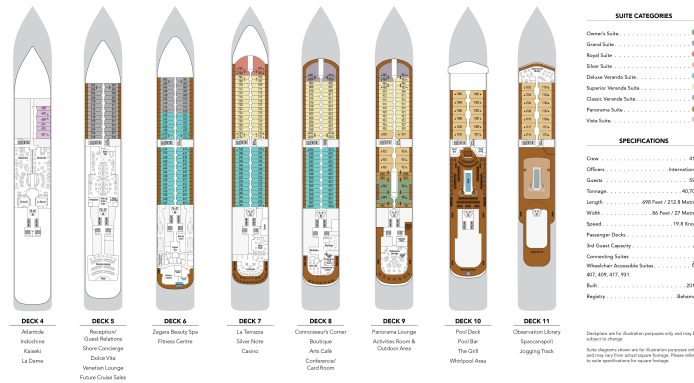
small-cruise-ships.com

info@small-cruise-ships.com

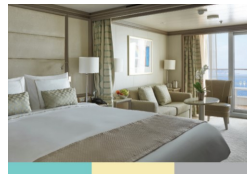
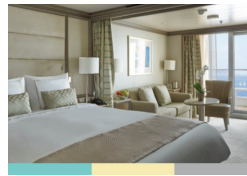
INSIDE YOUR SHIP

SILVER MUSE – Deck Plans

Effective from June 09, 2020

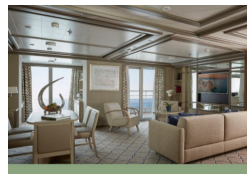
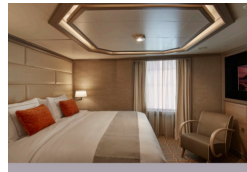


Classic Veranda Suite. From Deluxe Veranda Suite. From



Grand Suite. From

Owner's Suite. From



Panorama Suite. From
Silver Suite. From

Royal Suite. From
Superior Veranda Suite. From



The Small Cruise Ship Collection

www.small-cruise-ships.com

small-cruise-ships.com

info@small-cruise-ships.com

PRICING

01-Feb-2025 to 07-Mar-2025

Deluxe Veranda Suite. From	£15300 GBP pp
Royal Suite. From	£54264 GBP pp
Vista Suite. From	£11424 GBP pp
Owner's Suite. From	£64617 GBP pp
Panorama Suite. From	£12240 GBP pp
Classic Veranda Suite. From	£13770 GBP pp
Silver Suite. From	£22032 GBP pp
Superior Veranda Suite. From	£14535 GBP pp
Grand Suite. From	£59568 GBP pp