



The Small Cruise  
Ship Collection

[www.small-cruise-ships.com](http://www.small-cruise-ships.com)

[small-cruise-ships.com](http://small-cruise-ships.com)

[info@small-cruise-ships.com](mailto:info@small-cruise-ships.com)

# ARCTIC ISLANDS DISCOVERY - SVALBARD, JAN MAYEN, GREENLAND AND ICELAND EXPEDITION CRUISE

A voyage into the Arctic wilderness After flying from Oslo, your Arctic adventure starts in Longyearbyen, the town on top of the world. From here, you'll set sail for the rugged fjords, beautiful offshore islands and towering mountains of Northwest Spitsbergen National Park - the land of the polar bear. Spectacular fjords and a volcanic island Continuing to the isolated island of Jan Mayen, you'll visit the world's most northerly active volcano, before heading to Scoresby Sund in eastern Greenland, the largest fjord system on Earth. Witness mirror-like waters surrounded by looming mountains, and discover awe-inspiring glaciers and Arctic wildlife.

The Small Cruise  
Ship Collection

[www.small-cruise-ships.com](http://www.small-cruise-ships.com)

01432 507 280 (within UK)

[info@small-cruise-ships.com](mailto:info@small-cruise-ships.com) | [small-cruise-ships.com](http://small-cruise-ships.com)

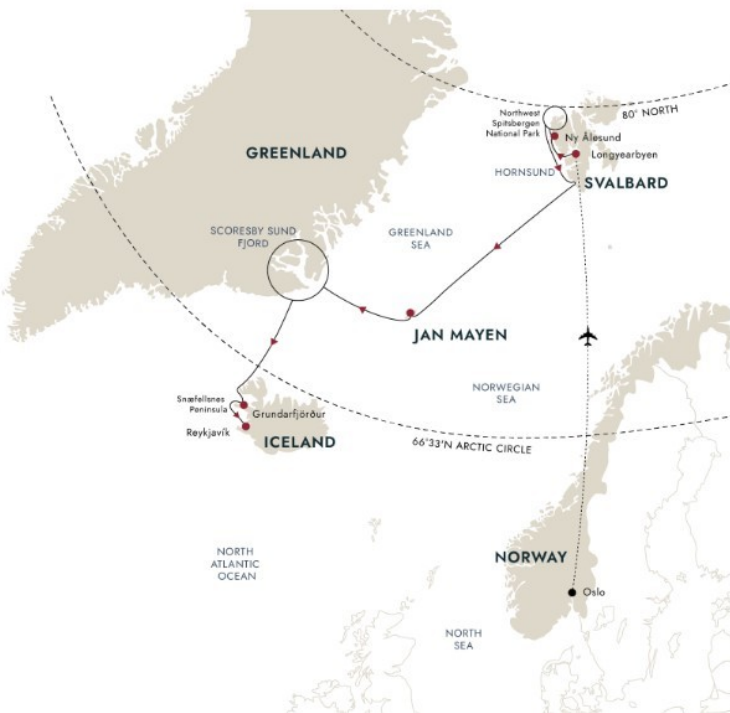
# The Small Cruise Ship Collection

www.small-cruise-ships.com



small-cruise-ships.com

info@small-cruise-ships.com



and new Munch Museum. And the city is compact enough to explore in a leisurely manner.

Take a stroll in the Ekebergparken sculpture park, visit Akershus Fortress, or relax in a floating sauna in the fjord. Explore modern Sørenga to sample urban beach life and perhaps try some New Nordic cuisine before you spend the night in your airport hotel.

## DAY 2 Longyearbyen Adventures

Explore the town at the top of the world

After your morning flight to Longyearbyen, it's time to explore the world's northernmost town, a colourful frontier settlement where people are outnumbered by snowmobiles.

Longyearbyen is perfect for exploring on foot. Stroll down the main street and you might see Svalbard reindeer saunter by. Although wild, they're curious and tame.

Before boarding your ship in the afternoon and continuing your Arctic discovery, join an included excursion and get a glimpse of this amazing polar bear-inspired region at the top of the world. And if you'd like to discover even more of Longyearbyen's special surroundings, why not join our optional Pre-Programme.

## DAY 3-6 Expedition days

## ITINERARY

### DAY 1 Cosmopolitan Oslo

Enjoy time in Oslo before flying to Svalbard

Your adventure begins in Oslo, Norway's fjord-side capital. If you have time, why not explore the city and enjoy what it has to offer.

With its rich history, diverse eateries and lively art scene, Oslo is a fascinating place. You'll find museums, galleries, and some very modern architecture - including the beautiful Opera House

The Small Cruise Ship Collection

www.small-cruise-ships.com

01432 507 280 (within UK)

info@small-cruise-ships.com | small-cruise-ships.com



## The Small Cruise Ship Collection

[www.small-cruise-ships.com](http://www.small-cruise-ships.com)

[small-cruise-ships.com](http://small-cruise-ships.com)

[info@small-cruise-ships.com](mailto:info@small-cruise-ships.com)

Experience pristine Arctic wilderness

Over the next four days, you'll explore the natural beauty and rugged tundra of Northwest Spitsbergen National Park. In this wilderness of steep mountains, stark glaciers and beautiful offshore islands, we'll scan for animals of the Arctic - whales, seals, walrus and reindeer. If we're really lucky, we might even see the elusive polar bear in its natural environment.

Each day will be different. From landings to kayaking, be ready for anything as your Captain and Expedition Team decide on the best landing sites and activities based on the day's conditions.

Perhaps we'll head to the snowcapped peaks of Raudfjord, Hornsund or Magdalenefjord, to see magnificent glaciers or visit Ny-Ålesund, the world's northernmost settlement and an important climate research station.

[DAY 7 A relaxing day at sea](#)

Enjoy a restorative day in the Arctic

Take time to relax on the ship day as we cruise through Arctic waters towards Jan Mayen. Enjoy panoramic views and chat with fellow guests in the Explorer Lounge & Bar or take a soak in a hot tub out on deck while scanning for seabirds.

You can also listen to a lecture or two on topics such as local history, geology or Arctic wildlife. Or visit the Science Center for more in-depth insights into the places we'll be visiting and maybe participate in a Citizen Science project that contributes to ongoing scientific research.

[DAY 8 Volcanic Jan Mayen](#)

Visit an active volcano that's a haven for birdlife

Jan Mayen has no permanent residents and visits to the island are rare. In fact, we're one of the few to attempt landings here. If conditions allow, you'll be setting foot in one of Earth's most remote places.

Jan Mayen's surreal, moss- and lichen-streaked landscape is dominated by the Beerenberg volcanic cone. It's the world's northernmost active volcano and it last erupted in 1985.

You won't see land mammals here, but the island is designated an Important Bird Area, supporting large populations of Northern Fulmars, Brunnich's Guillemots and Little Auks. Look out for abundant marine life in the surrounding waters too, including whales and seals.

[DAY 9 Heading toward Greenland](#)

The Small Cruise Ship Collection

[www.small-cruise-ships.com](http://www.small-cruise-ships.com)

01432 507 280 (within UK)

[info@small-cruise-ships.com](mailto:info@small-cruise-ships.com) | [small-cruise-ships.com](http://small-cruise-ships.com)





## The Small Cruise Ship Collection

[www.small-cruise-ships.com](http://www.small-cruise-ships.com)

[small-cruise-ships.com](http://small-cruise-ships.com)

[info@small-cruise-ships.com](mailto:info@small-cruise-ships.com)

Unwind and prepare for more adventures

At this point, you'll have seen some spectacular Arctic wildlife and scenery, and may be curious to learn more. Join the Expedition Team in the lecture hall and find out about what's coming up next in eastern Greenland and northern Iceland.

A day at sea is also an opportunity to sort through your images and pick up some tips from our onboard photographer as we cruise towards the Scoresby Sund.

[DAY 10-13 Greenland's Scoresby Sund fjord system](#)

Witness the largest fjord system on Earth

With stunning white and blue icebergs, mirror-like waters and looming mountains, the scenery in the world's largest fjord system is simply spectacular.

Scoresby Sund's steep peaks, open waters and ice-free winters are a haven for Greenland's iconic wildlife. Scan for musk oxen, Arctic foxes, mountain hares, whales and seals.

Birdlife also thrives here, including Little Auks, Atlantic Puffins, fulmars, Snowy Owls, Greenlandic Gyrfalcons and Great Black-backed Gulls.

We'll make the best of the conditions and take our time, packing in as many shore landings, nature walks, ship cruising, kayaking tours and wildlife sightings as possible.

[DAY 14 A relaxing day at sea](#)

Relax as we head for Iceland

A day at sea is an opportunity to wind down. Recline in the panoramic Explorer Lounge & Bar and take in the view. For even deeper relaxation, soak in a hot tub and recap the journey so far with your fellow travellers.

If you'd rather work up a sweat, head to the gym. Equipped with large windows, you can work out knowing you're not missing out on any of the stunning scenery outside.

[DAY 15 Charming Grundarfjörður](#)

Gateway to spectacular Snæfellsnes

The majestic Kirkjufell mountain, one of the best-known landmarks of Iceland, rises just 2 miles west of the small harbour of Grundarfjörður, a quaint fishing town in Breiðafjörður bay.

The Small Cruise Ship Collection

[www.small-cruise-ships.com](http://www.small-cruise-ships.com)

01432 507 280 (within UK)

[info@small-cruise-ships.com](mailto:info@small-cruise-ships.com) | [small-cruise-ships.com](http://small-cruise-ships.com)



Nearby, you'll find Snaefellsnes Peninsula National Park, with the striking, ice-capped Snaefellsjokull volcano at the western tip. It's nicknamed 'Little Iceland' for its array of landscapes.

At the national park, you can visit Djupalonssandur's black sand beach and the Saxholl crater. Or why not ride a snowcat to the top of the Snaefellsjokull glacier or take a guided underground tour along a gigantic lava tube.

DAY 16 End of the expedition

We say a fond farewell to MS Spitsbergen as we end our expedition in the fabulous city of Reykjavik. With its interesting museums, stylish galleries, restaurants and geothermal pools, there's so much to enjoy in Iceland's capital.

And if you want to discover more of Iceland, you can join our optional Post-Programme. Or simply extend your stay to enjoy more of Reykjavik and its surrounding geothermal attractions. It's a great place to end an epic journey.

Please note:

Itineraries are subject to change.

# The Small Cruise Ship Collection

www.small-cruise-ships.com



small-cruise-ships.com

info@small-cruise-ships.com

## YOUR SHIP: SPITSBERGEN

### YOUR SHIP:

**Spitsbergen**

**Expedition Passenger Capacity:**

**335** Built / refurbished: **2009 /**

### VESSEL TYPE:

**2016**

### LENGTH:

### PASSENGER CAPACITY:

### BUILT/REFURBISHED:

Completely rebuilt in 2016, the 100 metre MS Spitsbergen features high technical standards as well as comfortable, modern public areas and cabins. The vessel's fresh Scandinavian design reflects a colour palette derived from the sea. She is modern and environmentally progressive, and further improvements that will reduce emissions and fuel consumption even more are in process. The new ship's maneuverability and optimal size make her quite suitable for exploring polar waters of both the Arctic and Antarctica. Spitsbergen has a wide range of facilities including a sauna, fitness centre and hot tub, several bars and restaurants and a panoramic lounge. MS Spitsbergen has an on-board Expedition Team and serves as a university at sea. Interesting lectures inside the ship as well as out on the sun deck make this an exciting and educational journey. Topics depend on the season and the waters we sail in. The Expedition Team host a lecture programme and evening gatherings daily. Out on deck you can participate in live points of interest to learn more about the nature, culture and other phenomena we encounter along the coast. In addition, the Expedition Team will

introduce you to the uniquely Norwegian notion of 'friluftsliv' (outdoor life), and encourage you take part in 'friluftsliv' hikes and activities during the journey. Ship Facilities Compass Service Centre Brygga bistro Shop Torget main dining Wi-Fi Lift Guest launderette Panoramic deck 8 Outside bar for events,



decks 7 & 8

The Small Cruise Ship Collection

www.small-cruise-ships.com

01432 507 280 (within UK)

info@small-cruise-ships.com | small-cruise-ships.com





The Small Cruise  
Ship Collection

[www.small-cruise-ships.com](http://www.small-cruise-ships.com)



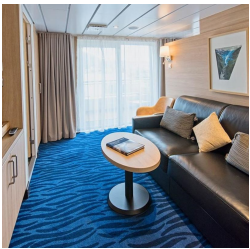
[small-cruise-ships.com](http://small-cruise-ships.com)

[info@small-cruise-ships.com](mailto:info@small-cruise-ships.com)

## INSIDE YOUR SHIP

Arctic Superior. From

Expedition Suite. From



Polar Inside. From

Polar Outside. From

The Small Cruise  
Ship Collection  
[www.small-cruise-ships.com](http://www.small-cruise-ships.com)

01432 507 280 (within UK)

[info@small-cruise-ships.com](mailto:info@small-cruise-ships.com) | [small-cruise-ships.com](http://small-cruise-ships.com)



# The Small Cruise Ship Collection

[www.small-cruise-ships.com](http://www.small-cruise-ships.com)



[small-cruise-ships.com](http://small-cruise-ships.com)

[info@small-cruise-ships.com](mailto:info@small-cruise-ships.com)

## PRICING

27-Jul-2025 to 11-Aug-2025

<b>Polar Outside. From</b>	<b>£7766 GBP pp</b>
<b>Expedition Suite. From</b>	<b>£10872 GBP pp</b>
<b>Polar Inside. From</b>	<b>£6770 GBP pp</b>
<b>Arctic Superior. From</b>	<b>£8528 GBP pp</b>



The Small Cruise Ship Collection

[www.small-cruise-ships.com](http://www.small-cruise-ships.com)

**01432 507 280** (within UK)

[info@small-cruise-ships.com](mailto:info@small-cruise-ships.com) | [small-cruise-ships.com](http://small-cruise-ships.com)