

# The Small Cruise Ship Collection

www.small-cruise-ships.com

small-cruise-ships.com

info@small-cruise-ships.com

## ANTARCTICA & FALKLANDS EXPEDITION ABOARD ROALD AMUNDSEN

Explore Antarctica during its summer, touring icebergs and visiting penguin colonies ashore. You'll also go to the Falkland Islands, visit its capital Stanley and see penguins and seals. The fabled frozen continent Start off in the romance-infused city of Buenos Aires before heading to Ushuaia where your hybrid-powered ship is docked. We sail the Drake Passage and arrive at the white wilderness of Antarctica where you'll spend five wonderful days. Exactly where we go and when, is down to the sea ice and weather conditions on the day, but we'll always bring you to the best spots available at the time. Just as the icescapes change with the seasons, so do the wildlife. During November, you'll see thousands of penguins courting and building nests. Whales are rarely seen until December and January which is also when penguin eggs hatch. By February and March, penguin chicks start growing up, and these are the peak months for whale-watching. Whenever you visit, you can join the Expedition Team in fascinating lectures, landings and ice-cruises. The many charms of the Falklands The rolling green hills and white-sand beaches of the Falkland Islands will be a welcome sight, as will the friendly pubs in the capital of Stanley. We spend time touring the picturesque archipelago and might go ashore to a variety of penguin and seal colonies dotted around.



### ITINERARY

#### DAY 1 BUENOS AIRES

City of many passions There's a beat to Buenos Aires that is unmistakably unique to the capital of Argentina. Ask any who live here and they'll tell you it is the melting-pot community of locals who imbue the city with such vibrancy. As porteños, 'the people of the port', they came from across the globe, bringing a diverse set of cultures with them. The result is an intoxicating blend of romance music, people dancing the tango at almost every opportunity, Maradona-mad football fans, Old World

The Small Cruise Ship Collection

www.small-cruise-ships.com

01432 507 280 (within UK)

info@small-cruise-ships.com | small-cruise-ships.com



## The Small Cruise Ship Collection

[www.small-cruise-ships.com](http://www.small-cruise-ships.com)

[small-cruise-ships.com](http://small-cruise-ships.com)

[info@small-cruise-ships.com](mailto:info@small-cruise-ships.com)

colonial architecture, and flavoursome Latin food. You'll be spending one night at a hotel in the city before catching an early flight the next morning. Depending on when you arrive, you might have some time to explore a little of this lively capital. Visit Teatro Colon, a beautiful opera house that dates back to 1908 and then pop into historic Cafe Tortoni for Paris-inspired coffee and chocolate-dipped churros. Caminito is a colourful street museum in La Boca neighbourhood that features buzzy markets and restaurants that host live folk dance and tango shows. To carry on the party mood late into the night, the posh district of Palermo has bars and boliche clubs aplenty. If really want to extend your vacation, you can also come a few days early to join our optional Pre-Programme to explore wild Patagonia.

### DAY 2 BUENOS AIRES/USHUAIA

Boarding your basecamp Estimated time of departure is 7:00 PM It's an early start today. We meet in the lobby of the hotel in the morning and head to the airport for our flight to Ushuaia. The capital of Argentina's Tierra del Fuego province sits on the shores of a bay backed by the snow-coated mountains of the Martial Glacier to the north. Ushuaia claims the dubious title of the world's southernmost city, although this is contended by two other Chilean cities. Your basecamp at sea, MS Roald Amundsen, waits in the port here. Once on board, you'll be introduced to the Expedition Team who will conduct a health and safety briefing. Afterwards, you have some time to tour the ship and to settle in your cabin before we enjoy a welcome dinner together. Your expedition is officially underway!

### DAYS 3-4 DRAKE PASSAGE

Making the most of the crossing It takes two days of straight sailing to reach Antarctica. This is a good thing as two days turns out to be just the right amount of time for you to enjoy equal amounts of relaxation and preparation on board the ship. To make sure you are ready for the days of exploration ahead of you, the Expedition Team will begin a series of insightful lectures over at the Science Center. Each member of the Expedition Team are experts on different subjects and you'll find them to be walking, talking treasure troves of fascinating stories and information. Listen and learn intriguing facts about the local wildlife as well as what IAATO-approved sustainability protocol to follow if curious penguins or seals come too close. As part of these IAATO guidelines, you'll learn the importance of wearing our sterilised rubber boots during all Antarctica landings and why we thoroughly vacuum our clothes from any foreign particles beforehand. You'll also find that the ship is equipped with all manner of mod cons that add to your comfort. Keep fit in the gym and on the outdoor track circuit. Any aches from your workout can be steamed away in the sauna or massaged by masterful hands in the Wellness Spa. Three onboard restaurants, each with a different culinary concept, will delight your palate while the Explorer Lounge and Bar is the perfect place to chill with a glass of wine or bubbly. Just because an expedition is exciting, it doesn't mean it can't be luxurious too!

### DAY 5-9 ANTARCTICA

The Seventh Continent The landscapes of Antarctica stretch as far as your eyes can see - a beautiful realm preserved by

The Small Cruise Ship Collection

[www.small-cruise-ships.com](http://www.small-cruise-ships.com)

01432 507 280 (within UK)

[info@small-cruise-ships.com](mailto:info@small-cruise-ships.com) | [small-cruise-ships.com](http://small-cruise-ships.com)



# The Small Cruise Ship Collection

[www.small-cruise-ships.com](http://www.small-cruise-ships.com)

[small-cruise-ships.com](http://small-cruise-ships.com)

[info@small-cruise-ships.com](mailto:info@small-cruise-ships.com)

pristine snow and ice. Tabular icebergs, parts of the great shelves tower above the waters while ancient glaciers give birth to blue-hued icebergs that are sculpted by wind and sun. This is another world, devoid of human influence and a haven for wildlife like whales, penguins and seals. Just as the icescapes of Antarctica change through its seasons, so does its wildlife. For instance, the number and range of species of whale that can be seen here begin to steadily increase from October through to January, reaching their peak in February and March for the best whale-watching opportunities. By this time, the large amount of krill in the waters attract the most whales and the most whale species who come for a veritable feeding frenzy. If you arrive here in November, you might see thousands of penguins courting and building their nests. Those on December sailings may be treated to scenes of heart-meltingly cute penguin chicks whereas March is usually when adolescent penguins mature and learn how to swim. Other birds, which unlike penguins actually fly, vary throughout the summer months. Eager ornithologists will usually see the likes of cormorants, shags, egrets, sheathbills and many more. You have five days to take in every magical moment and jaw-dropping scenery Antarctica grants you. This could be gazing at distant white mountains during a walk ashore or having a playful pair of Weddell seals surface next to your small explorer boat to take a peek at you with their large inquisitive eyes. Or being in the winning lottery of those who can join optional but weather-dependent activities like kayaking, snowshoeing or even camping. These are the kinds of experiences that await you in Antarctica. Rest assured we plan to make the most of each landing and will choose the best sites from numerous possible locations on the Antarctic Peninsula and its surrounding islands. Lectures from the Expedition Team will be ongoing as well, be it on board the ship, ashore during

landings, or even when navigating the icebergs and ice floes on cruises via small explorer boat. Topics might touch on glaciology and the impact of climate change on the Antarctic ice shelves or chart the cold continent's history from the whaling era to its present status under an international peace treaty. The team's insights will prove invaluable to you over the course of your journey, enhancing your sense of discovery a hundredfold. It might be an idea to talk with the team's professional wildlife and landscape photographer for a few tricks to improve the quality of your images. These skills will definitely come in handy for a number of Citizen Science programmes that you can choose to engage with. One of these is the HappyWhale project where photos you take of any whales you spot can be uploaded to a global database that helps researchers track the migration patterns and overall health of the population. In this way, aside from being precious memories, all your snaps add up and contribute to the greater good.

## DAY 10-11 DRAKE PASSAGE

Returning north to explore more Even though you might have to tear yourself away from Antarctica, our time there will come to an end and we will have to point the ship north again. The following two days at sea back across the Drake Passage can be spent sorting through all your amazing photos of Antarctica, and making sure you still have space on your memory card for what's to come next. You might also have the option to join workshops where you'll channel your memories of Antarctica to paint penguins or learn how to tie complicated sailor's knots. Over at the Science Center, there will likely be presentations from the Expedition Team to stir your enthusiasm for the final

The Small Cruise Ship Collection  
[www.small-cruise-ships.com](http://www.small-cruise-ships.com)

01432 507 280 (within UK)

[info@small-cruise-ships.com](mailto:info@small-cruise-ships.com) | [small-cruise-ships.com](http://small-cruise-ships.com)



## The Small Cruise Ship Collection

[www.small-cruise-ships.com](http://www.small-cruise-ships.com)

[small-cruise-ships.com](http://small-cruise-ships.com)

[info@small-cruise-ships.com](mailto:info@small-cruise-ships.com)

few days of your voyage in the Falkland Islands. Lectures may include the tense history of the islands as well as the species of birds that can be seen around its beautiful beaches. In between lectures, you can use the Science Centre's advanced microscopes to peer into water samples at a cellular level. You'll discover all manner of microscopic lifeforms including krill and phytoplankton, which also happen to tie into another Citizen Science initiative.

### DAY 12-14 THE FALKLAND ISLANDS

Indisputable beauty The far-flung Falkland archipelago is split between the two main islands of East and West Falkland and nearly 800 smaller islands. Sovereignty over the islands has been claimed by both the UK and by Argentina for many years, but at least both sides can agree that these islands are well worth arguing over, and for good reason. Like our approach in Antarctica, your three days of exploration here and the exact landing sites for each day will be determined by local conditions at the time. After the barren white scenery of Antarctica, you might be a little relieved to see grassy hills, blooming wildflowers, stunning white-sand beaches and turquoise waters. Still, it won't be too dissimilar in that there are several thousand penguins here for you to catch sight of too! Over these few days, we will try and see colonies of penguins, which often have families of fur seals mixed in among them too. We will be keeping a safe distance so as not to disturb them or their tuxedoed neighbours. For the first time in more than a week, you'll also encounter signs of civilisation again, be it the family-owned farms scattered around or the capital of Stanley on East Falkland where four fifths of the islands' population live.

When you visit, you'll find the town is a slice of English life, including typical red buses and good ol' pubs serving up British beer and friendly banter.

### DAY 15 AT SEA

Heading for Home Your expedition is fast approaching its end. There's just one last day at sea to enjoy as you wish. Head to the bar and share a few drinks with the friends you have made during your journey. Swap stories of your adventures with the Expedition Team and learn more about these modern-day explorers. Treat yourself to a fine dining experience in the a la carte restaurant or a soothing treatment in the Wellness Spa. Or simply spend time relaxing out on deck, watching the waves and fondly remembering the many highlights of your voyage.

### DAY 16 USHUAIA/BUENOS AIRES

Until next time Estimated time of arrival is 8:00 AM After two weeks enjoying exploring Antarctica and the Falklands, we dock back in Ushuaia. It's been an epic and emotional journey and we'll have seen and learned so much together. There might even be a few tears when we come to bid each other farewell. It is our hope that your experience with us will have left a lasting impression about what is possible when expeditions are done in a sustainable way. May each of us continue to do all we can to protect these precious habitats and the wonderful wildlife that live in them. Transferring to Ushuaia airport, you'll fly back to Buenos Aires. From there, you will either fly home or continue to explore more. Seeing as you are already in Argentina, you might like to make the most of it! Why not join an optional

The Small Cruise Ship Collection

[www.small-cruise-ships.com](http://www.small-cruise-ships.com)

01432 507 280 (within UK)

[info@small-cruise-ships.com](mailto:info@small-cruise-ships.com) | [small-cruise-ships.com](http://small-cruise-ships.com)



Post-Programme to the magnificent Iguazu waterfalls?

Please Note:

Itineraries are subject to change.

# The Small Cruise Ship Collection

www.small-cruise-ships.com

small-cruise-ships.com

info@small-cruise-ships.com

## YOUR SHIP: ROALD AMUNDSEN

**YOUR SHIP:** Roald Amundsen

**VESSEL TYPE:**

**LENGTH:**

**PASSENGER CAPACITY:**

**BUILT/REFURBISHED:**

Launched in 2019, The state of the art vessel features new and environmentally sustainable hybrid technology that will reduce fuel consumption and show the world that hybrid propulsion on large ships is possible. MS Roald Amundsen is the first of two hybrid ships to be launched cutting emissions by sailing with electrical propulsion. Hybrid technology, combined with the advanced construction of the hull and effective use of electricity on board will reduce fuel consumption and CO2-emissions on the ships by 20 percent. The future of shipping will be silent and emission free. MS Roald Amundsen will lead the way towards an even more sustainable way of traveling. Sailing on electrical power is not only a great benefit for the environment, but it will also enhance the impact of experiencing nature for the guests. The ship will be specially constructed for voyages in polar waters and serve as a comfortable basecamp at sea - bringing adventurers from all over the world to the most spectacular destinations in the most sustainable way. These ships combine state-of-the-art technology together with a premium onboard experience. All cabins are outside, half have private balconies, and aft suites even boast private outdoor Jacuzzis, to soak up the stunning scenery in style. Facilities on board One of the

most eye-catching exterior design features of the ships will be the two-level indoor/outdoor Observation Deck wrapped around the top of the ships' raked bow. In a vast area behind it, you'll find the core of the onboard experience: Amundsen Science Center. Packed with state of the art technology and high tech gadgets such as touch screens and science equipment, the immersive edutainment area will be the place guests and staff/crew meet, mingle and create a deeper understanding for the areas they explore. The flexible venue will feature lecture spaces, a small library, and speciality areas for workshops in photography, biology, and more. The stunning scenery will be reflected in a rich and comfortable interior design. Scandinavian materials from nature, such as granite, oak, birch and wool will be used to create relaxed and stylish cabins and public areas. All cabins are outside, 50 % will have private balconies, aft suites will feature private outdoor Jacuzzis with



spectacular views.

The Small Cruise Ship Collection  
www.small-cruise-ships.com

01432 507 280 (within UK)

info@small-cruise-ships.com | small-cruise-ships.com

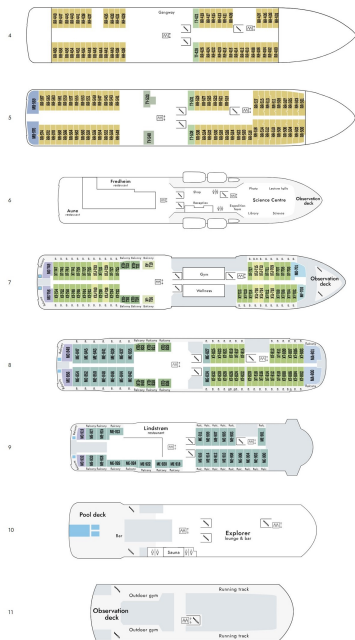
# The Small Cruise Ship Collection

www.small-cruise-ships.com

small-cruise-ships.com

info@small-cruise-ships.com

## INSIDE YOUR SHIP



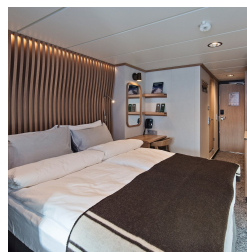
Arctic Superior. From



Expedition Suite. From



Polar Outside. From





# The Small Cruise Ship Collection

[www.small-cruise-ships.com](http://www.small-cruise-ships.com)

[small-cruise-ships.com](http://small-cruise-ships.com)

[info@small-cruise-ships.com](mailto:info@small-cruise-ships.com)

## PRICING

### 29-Oct-2025 to 15-Nov-2025

Expedition Suite. From £14078 GBP pp

Polar Outside. From £9679 GBP pp

Arctic Superior. From £10687 GBP pp

### 14-Nov-2025 to 29-Nov-2025

Arctic Superior. From £10154 GBP pp

Polar Outside. From £9281 GBP pp

Expedition Suite. From £13091 GBP pp

### 08-Dec-2025 to 23-Dec-2025

Polar Outside. From £9097 GBP pp

Expedition Suite. From £12818 GBP pp

Arctic Superior. From £9949 GBP pp

### 28-Nov-2026 to 15-Dec-2026

Expedition Suite. From £15165 GBP pp

Polar Outside. From £10699 GBP pp

Arctic Superior. From £11725 GBP pp

### 06-Mar-2027 to 23-Mar-2027

Expedition Suite. From £14795 GBP pp

Polar Outside. From £10445 GBP pp

Arctic Superior. From £11445 GBP pp