

The Small Cruise Ship Collection

www.small-cruise-ships.com

small-cruise-ships.com

info@small-cruise-ships.com

ANTARCTICA DIRECT: SAIL AND FLY THE DRAKE PASSAGE EXPEDITION CRUISE

Experience the wild grandeur of the White Continent in a more efficient, expedient way. On this new itinerary, cruise the Drake Passage one way, and then bypass the Drake Passage on the way back on a 2-hour flight from Antarctica and discover all of the highlights without sacrificing the extra time. Travel with a diverse team of experts aboard the National Geographic Explorer, the definitive expedition ship. Venture into channels and coves framed by towering peaks. Watch for whales off the bow; Zodiac cruise around enormous icebergs; and hike, kayak, and even possibly cross-country ski in complete tranquility. Choose an active agenda or surrender to the pleasures of relaxing downtime and shipboard camaraderie. Plus, get top shots with the help of a National Geographic Photography Expert.



ITINERARY

DAY 1 Ushuaia, Argentina

The Small Cruise Ship Collection

www.small-cruise-ships.com

01432 507 280 (within UK)

info@small-cruise-ships.com | small-cruise-ships.com



The Small Cruise Ship Collection

www.small-cruise-ships.com

small-cruise-ships.com

info@small-cruise-ships.com

Arrive in Ushuaia. Sandwiched between ice-mantled peaks and the frigid waters of the Beagle Channel, this is a fittingly wild place to be known as "El Fin del Mundo" or "The End of the World." Transfer from the airport to our hotel. Join us this evening for dinner and a briefing on our upcoming adventure.

Arrival Time: Arrive by 6:00 p.m. local time.

Arrival City: Ushuaia, Argentina

Meals Included: Dinner

[DAY 2 Ushuaia / Embark Ship](#)

Check out of our hotel and begin exploring this amazing region. Visit Tierra del Fuego National Park, clad in dense beech forest just as much of Antarctica was millions of years ago. Savor lunch on board a private catamaran as you cruise the Channel, keeping an eye out for plump South American sea lions and sleek seabirds like the imperial cormorant. By day's end, you'll be comfortably on board the ship and ready to sail off to the White Continent.

Meals Included: Breakfast, Lunch, Dinner

[DAYS 3-4 At Sea Crossing the Drake Passage](#)

At times ferocious, at others flat calm, this legendary 500-mile-wide strait divides South America from the Antarctic Peninsula. Feel the excitement build as we begin the crossing, often accompanied by seabirds like the wandering albatross and--if luck allows--a pod of killer whales or rare dolphins. Get to know the ship and prepare for the adventures ahead. Visit the Bridge (ideal for wildlife spotting), relax with a massage, attend a talk on the unique biology of penguins, or simply settle into a comfy chair in the observation lounge, looking out over the waves as you contemplate the history of this passage named for English privateer Francis Drake, but first discovered by Spanish navigator Francisco de Hoces.

Meals Included: Breakfast, Lunch, Dinner

[DAYS 5-8 Exploring Antarctica](#)

With long hours of daylight at this time of year, we have ample opportunities to explore. Our schedule is flexible, allowing us to take advantage of the unexpected, whether we're watching whales at play off the bow of our ship, hiking alongside penguin highways, or enjoying an evening Zodiac cruise amid porpoising penguins. While wildlife is magnificent, ice defines the Antarctic. You'll get to know ice up close and personal--from icebergs the size of islands, bergy bits and near-vertical glaciers, to the fragile, nearly invisible layers that have just begun to freeze. One day, we might set out by kayak to encounter towering icebergs

The Small Cruise
Ship Collection

www.small-cruise-ships.com

01432 507 280 (within UK)

info@small-cruise-ships.com | small-cruise-ships.com



The Small Cruise Ship Collection

www.small-cruise-ships.com

small-cruise-ships.com

info@small-cruise-ships.com

at water level; embark on a Zodiac excursion in search of seals and blue-eyed shags; or walk amid thousands of Adelie and gentoo penguins. The next, we might experience the thrill of the ship crunching through pack ice. Everywhere we go in Antarctica we're surrounded by opportunities to capture uniquely beautiful images. Along the way, your expert expedition team will enrich every experience.

Meals Included: Breakfast, Lunch, Dinner

DAY 9 King George Island / Disembark Ship / Puerto Natales, Chile

This morning finds us off of King George Island. Home to a diverse assortment of wildlife--Weddell and elephant seals; Adelie, chinstrap, and gentoo penguins--this island also has a human presence. Researchers from a wide range of countries, including the US, Chile, Argentina, and Brazil, call the various stations home. Disembark and Zodiac ashore to board our 2-hour flight back to Puerto Natales where we will overnight at Hotel Costaustralis or Remota Patagonia Lodge (or similar).

Meals Included: Breakfast, Lunch, Dinner

DAY 10 Puerto Natales

Check out of your hotel and transfer to the airport to begin your journey homeward.

Departure Time: Outbound flights from Puerto Natales should depart no earlier than 3:45 p.m. local time (or as late in the day as possible).

Departure City: Puerto Natales, Chile

Meals Included: Breakfast

Please note:

Itineraries are subject to change.

The Small Cruise Ship Collection

www.small-cruise-ships.com

small-cruise-ships.com

info@small-cruise-ships.com

YOUR SHIP: NATIONAL GEOGRAPHIC EXPLORER

YOUR SHIP:	National Geographic Explorer
VESSEL TYPE:	Luxury Expedition
LENGTH:	108 meters
PASSENGER CAPACITY:	148 (single & twin cabins)
BUILT/REFURBISHED:	1982 / 2008

National Geographic Explorer is a state-of-the-art expedition ship. It is a fully stabilized, ice-class vessel, enabling it to navigate polar passages while providing exceptional comfort. It carries kayaks and a fleet of Zodiac landing craft. An Undersea Specialist operates a remotely operated vehicle (ROV) and sophisticated video equipment, extending access to the underwater world. Public areas : Bistro Bar; Chart Room; Restaurant; Global Gallery; Library, Lounge with full service bar and state-of-the-art facilities for films, slideshows and presentations; Mud Room with lockers for expedition gear, and Observation Lounge. Our "Open Bridge" provides guests an opportunity to meet our Officers and Captain and learn about navigation. Meals : Served in single seatings with unassigned tables for an informal atmosphere and easy mingling. Menu is international with local flair. Cabins : All cabins face outside with windows or portholes, private facilities and climate controls. Expedition Equipment : Zodiac landing craft, kayaks, Remotely Operated Vehicle (ROV), hydrophone, SplashCam, underwater video camera, Crow's Nest remote controlled camera, video microscope, snorkeling gear. Special Features : A full-time doctor, Undersea Specialist, LEX Photo Specialist and Video

Chronicler, Internet Cafe and laundry. Wellness : The vessel is staffed by two Wellness Specialists and features a glass enclosed Fitness Center, outdoor stretching area, two LEXspa treatment rooms



and Sauna.

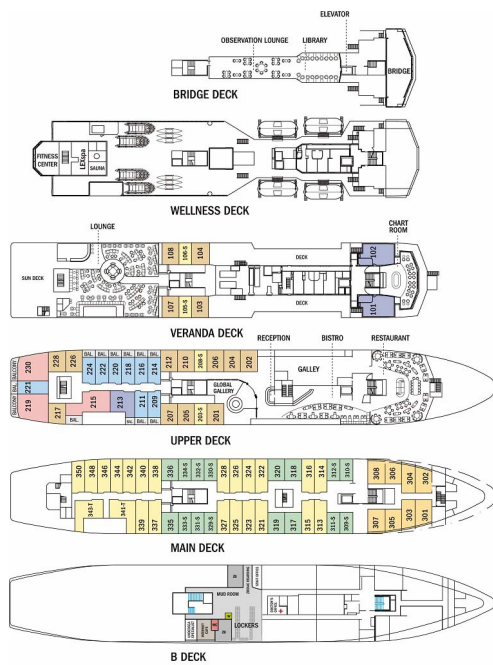
The Small Cruise Ship Collection

www.small-cruise-ships.com

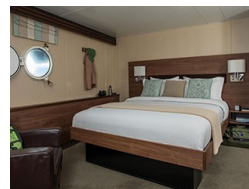
small-cruise-ships.com

info@small-cruise-ships.com

INSIDE YOUR SHIP



Category 1



Category 2



Category 3



Category 4



Category 5

Category 6

Category 7

Category SA (solo)

The Small Cruise Ship Collection

www.small-cruise-ships.com

small-cruise-ships.com

info@small-cruise-ships.com

PRICING

19-Nov-2024 to 28-Nov-2024

Category 2	£7843 GBP pp
Category 6	£12637 GBP pp
Category 1	£6981 GBP pp
Category 4	£8695 GBP pp
Category 7	£13963 GBP pp
Category 3	£8088 GBP pp
Category 5	£10868 GBP pp

27-Dec-2024 to 05-Jan-2025

Category 3	£9562 GBP pp
Category SB (solo)	£14346 GBP pp
Category 4	£10286 GBP pp
Category SA (solo)	£12387 GBP pp
Category 5	£12857 GBP pp

03-Feb-2025 to 12-Feb-2025

Category 4	£9491 GBP pp
Category 5	£11862 GBP pp
Category 6	£13790 GBP pp

07-Nov-2025 to 16-Nov-2025

Category 7	£16320 GBP pp
Category 5	£12783 GBP pp
Category 4	£10299 GBP pp
Category 6	£14804 GBP pp
Category SB (solo)	£14224 GBP pp
Category 3	£9604 GBP pp
Category 2	£9327 GBP pp
Category 1	£7775 GBP pp
Category SA (solo)	£12331 GBP pp

26-Nov-2025 to 05-Dec-2025

Category 1	£8342 GBP pp
Category SB (solo)	£14224 GBP pp
Category 7	£16320 GBP pp
Category 3	£9604 GBP pp
Category 5	£12783 GBP pp
Category 4	£10299 GBP pp
Category 6	£14804 GBP pp
Category SA (solo)	£12331 GBP pp
Category 2	£9327 GBP pp

The Small Cruise Ship Collection

www.small-cruise-ships.com

small-cruise-ships.com

info@small-cruise-ships.com

PRICING

15-Dec-2025 to 24-Dec-2025

Category 3	£9968 GBP pp
Category 5	£13147 GBP pp
Category 6	£15168 GBP pp
Category SB (solo)	£14589 GBP pp
Category SA (solo)	£12695 GBP pp
Category 4	£10664 GBP pp
Category 2	£9692 GBP pp
Category 7	£16684 GBP pp
Category 1	£8706 GBP pp

03-Jan-2026 to 12-Jan-2026

Category SB (solo)	£17121 GBP pp
Category 4	£12479 GBP pp
Category 6	£17808 GBP pp
Category SA (solo)	£14881 GBP pp
Category 2	£11329 GBP pp
Category 5	£15417 GBP pp
Category 1	£10163 GBP pp
Category 7	£19598 GBP pp
Category 3	£11657 GBP pp

22-Jan-2026 to 31-Jan-2026

Category 5	£14281 GBP pp
Category 4	£11571 GBP pp
Category SA (solo)	£13788 GBP pp
Category 6	£16487 GBP pp
Category 3	£10812 GBP pp
Category 2	£10510 GBP pp
Category SB (solo)	£15854 GBP pp
Category 1	£9435 GBP pp

10-Feb-2026 to 19-Feb-2026

Category 4	£11206 GBP pp
Category 6	£16123 GBP pp
Category 2	£10145 GBP pp
Category 3	£10448 GBP pp
Category SA (solo)	£13423 GBP pp
Category 7	£17777 GBP pp
Category SB (solo)	£15490 GBP pp
Category 1	£9070 GBP pp
Category 5	£13917 GBP pp

ADDITIONAL CHARGES: Mandatory charter flight 1250 AUD pp