

# The Small Cruise Ship Collection

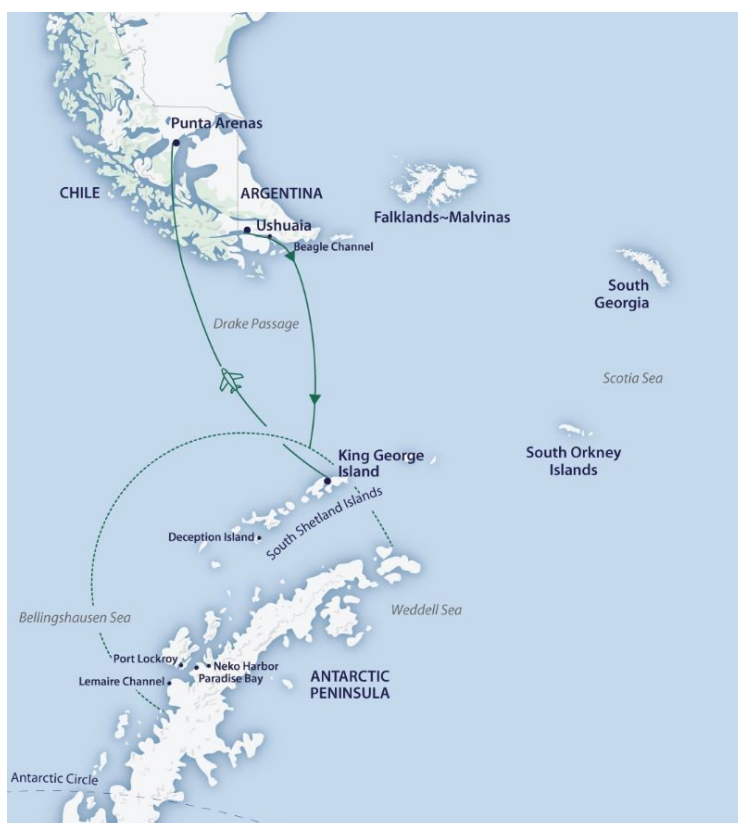
www.small-cruise-ships.com

small-cruise-ships.com

info@small-cruise-ships.com

## ANTARCTIC EXPLORER ABOARD GREG MORTIMER

Early Antarctic explorers returned from their voyages to the deep south with tales of a magnificent, ice-covered land teeming with life. Experience the awe-inspiring immensity of Antarctica and immerse yourself in the unimaginable beauty of the Antarctic Peninsula, where vast glaciers tumble into the sea, penguins are dwarfed by soaring peaks, and humpback and minke whales feast on abundant krill. Reduce your time on the high seas by flying at least one way across the Drake Passage.



### ITINERARY

Day 1 Arrival airport transfer and overnight in Ushuaia

Arrive in Ushuaia, where you will be met by a representative of Aurora Expeditions and transferred to your group hotel (preferred flights only). Upon arrival at your included hotel, kindly remind hotel check-in staff to provide you with Aurora Expeditions cabin

The Small Cruise Ship Collection  
www.small-cruise-ships.com

01432 507 280 (within UK)

info@small-cruise-ships.com | small-cruise-ships.com



## The Small Cruise Ship Collection

[www.small-cruise-ships.com](http://www.small-cruise-ships.com)

[small-cruise-ships.com](http://small-cruise-ships.com)

[info@small-cruise-ships.com](mailto:info@small-cruise-ships.com)

tags. Please clearly label the tags with your name and ship cabin number.

### Day 2 Embarkation Day

This morning, please ensure your cabin luggage is fitted with cabin tags clearly labelled with your name and cabin number. Please take your cabin luggage down to hotel reception by 8.00 AM. Please be advised that this voyage includes a chartered flight at the end of the voyage from Antarctica to Punta Arenas. The permitted luggage allowance is 20 kilograms of check-in luggage plus one piece of carry-on luggage weighing no more than seven kilos. Your luggage will be collected from your hotel and transferred directly to port for clearance and delivered to your cabin ahead of your arrival on board. Keep any valuables or personal items with you throughout the day. Once you have checked out of your hotel by 11.00 AM, you have free time before meeting back in the hotel lobby at 2.00 PM to commence a tour of Ushuaia. Alternatively, enjoy time at leisure and make your own way to Prison Museum carpark by 3.45 pm to rejoin the group and transfer to the pier for embarkation. Ushuaia, capital of Tierra del Fuego is located at the shores of the Beagle Channel and surrounded by the Martial Mountains giving you a unique landscape in Argentina, which is the combination of mountains, sea, glaciers and forests. On this introductory tour, you will visit "La Mision" neighbourhood, the old Government House, and the upper area of the city, which offers beautiful panoramic views of Ushuaia and the Beagle Channel. During the excursion you will see the antique houses that belonged to the first families settled in Ushuaia. The excursion ends with a visit to the Old Prison Museum before

transferring to the pier for embarkation at approximately 4.00 PM. After embarkation, you'll have time to settle into your cabin before our important mandatory briefings. As the ship pulls away from port, we'll gather on the deck to commence our adventure with spectacular views over Ushuaia and Tierra del Fuego. This evening, get to know your fellow expeditioners and friendly expedition team and crew at a welcome dinner. (Breakfast and dinner included. Lunch is at own expense)

### Day 3 Drake Passage Crossing

As we commence the Drake Passage crossing, we make the most of our time getting comfortable with the motions of the sea. Our expedition team prepare you for our first landing with important wildlife guidelines and biosecurity procedures, and start our lecture program to help you learn more about Antarctica's history, wildlife and environment. Our wildlife experiences begin as we enjoy watching and photographing the many seabirds, including majestic albatrosses and giant petrels following in our wake. They rise and fall skilfully, using air currents created by the ship to gain momentum.

### Day 4 Drake Passage & South Shetland Islands

Nearing the South Shetland Islands and the tip of the Antarctic Peninsula on day four, the excitement is palpable with everyone converging on one of the observation decks, watching for our first iceberg. The ocean takes on a whole new perspective once we are below the Antarctic Convergence and are surrounded by the surreal presence of floating ice sculptures. The memory of your first big iceberg sighting is likely to remain with you for a

The Small Cruise Ship Collection

[www.small-cruise-ships.com](http://www.small-cruise-ships.com)

01432 507 280 (within UK)

[info@small-cruise-ships.com](mailto:info@small-cruise-ships.com) | [small-cruise-ships.com](http://small-cruise-ships.com)



## The Small Cruise Ship Collection

[www.small-cruise-ships.com](http://www.small-cruise-ships.com)

[small-cruise-ships.com](http://small-cruise-ships.com)

[info@small-cruise-ships.com](mailto:info@small-cruise-ships.com)

lifetime. Weather permitting, we may attempt our first landing in Antarctica by late afternoon.

### Day 5-9 Antarctic Peninsula

It's almost impossible to describe the feeling of arriving in Antarctica. Spotting your first iceberg and taking a deep breath of some of the most fresh, crisp air on earth is an experience that will stay with you forever. Once we arrive, the western side of the Antarctic Peninsula and the South Shetland Islands are ours to explore, and we have a host of choices available to us. Because we are so far south, we will experience approximately 18-24 hours of daylight and the days can be as busy as you wish. Your experienced expedition team, who have made countless journeys to this area, will use their expertise to design your voyage from day to day, choosing the best options based on the prevailing weather, ice conditions and wildlife opportunities. We generally make landings or Zodiac excursions twice a day. You'll want to rug up before joining Zodiac cruises along spectacular ice cliffs or among grounded icebergs, keeping watch for whales, seals and porpoising penguins. Zodiacs will also transport you from the ship to land, where you can visit penguin rookeries, discover historic huts and explore some of our favourite spots along the peninsula. While ashore we aim to stretch our legs, wandering along pebbly beaches or perhaps up snow-covered ridgelines to vantage points with mountains towering overhead and ice-speckled oceans below. If you have chosen an optional activity, you'll have the option to do that whenever conditions allow, and of course keen polar plungers will have the chance to fully immerse themselves in polar waters - conditions permitting! In addition to Zodiac

cruises and shore excursions, we may ship cruise some of the narrow, dramatic straits separating offshore islands from the mainland, or linger in scenic bays to watch whales travelling or feeding. This is a great time to enjoy the observation lounge or make your way to the bridge for uninterrupted views of Antarctica in all its splendour. Keep an ear out for the creak and deep rumble of glaciers as they carve their way from summit to sea, and take a quiet moment to experience the wonder of this incredible white continent.

### Day 10 Fly King George Island to Punta Arenas

As we approach Frei Base on King George Island, it is time to farewell Antarctica and our amazing adventure before boarding our flight (approximately one-and-a-half-hours) to Punta Arenas, Chile. On arrival at the Punta Arenas airport, you will be transferred to our group hotel. NOTE: King George Island is located at the northern tip of the Antarctic Peninsula in the South Shetland Islands and is one of the most remote place on Earth. A clear sky with perfect visibility is required in order to take off and land safely. We apologise in advance if you experience any delays.

### Day 11 Punta Arenas

After breakfast, bid a fond farewell to your fellow travellers as we all continue our onward journeys, hopefully with a newfound sense of the immense power of nature (breakfast included). NOTE: Please advise your Reservations Consultant or travel agent if you require an airport transfer, so it can be booked in advance. The departure airport transfer is not included in your



voyage cost and will be at an additional charge.

Please Note:

In true expedition style we encourage exploration and adventure, offering flexibility in challenging environments in a way that puts you among the action to see and do as much as possible. This itinerary is only a guide and subject to change due to ice and weather conditions.



# The Small Cruise Ship Collection

[www.small-cruise-ships.com](http://www.small-cruise-ships.com)

[small-cruise-ships.com](http://small-cruise-ships.com)

[info@small-cruise-ships.com](mailto:info@small-cruise-ships.com)

## YOUR SHIP: DOUGLAS MAWSON

<b>YOUR SHIP:</b>	<b>Douglas Mawson</b>
<b>VESSEL TYPE:</b>	<b>Small Ship Expedition</b>
<b>LENGTH:</b>	
<b>PASSENGER CAPACITY:</b>	<b>154</b>
<b>BUILT/REFURBISHED:</b>	<b>2025</b>

Length: 104.4 m Designed for global discovery Adventure has a new name. Setting sail in 2025, our new state-of-the-art ship, the Douglas Mawson, is the last in a line of purpose-built vessels that have redefined small ship expedition cruising. Named after the legendary Australian geologist and explorer, our new small ship embodies Mawson's pioneering spirit and is designed for global discovery. Featuring the revolutionary Ulstein X-BOW® and purpose-built with enhanced sustainability features, it takes on average 154 adventurers to the world's wildest places in smooth, quiet comfort. It boasts our most extensive range of cabins yet, including a range of single cabins. The Douglas Mawson features a host of amenities to help you connect with like-minded travellers and elevate your time onboard our floating base camp for adventure. After a long day of exploring, head to the back deck to swim in the heated outdoor swimming pool, find a sun bed to read on, or soak in one of two Jacuzzis. Work up a sweat in the gym before unwinding in the sauna, resolve to learn something new in the Citizen Science Centre, then enjoy a delicious meal with new and old friends in one of two restaurants. Or, with multiple observation areas throughout the ship, simply relax in comfort

while you keep watch for wildlife or incredible landscapes unfold before you. While enjoying the luxurious amenities onboard, you can rest assured that our aim to get you off the ship to explore the natural environment as much as possible through our unique activities program remains unchanged. Newest Ulstein X-BOW® The Douglas Mawson features the newest streamlined Ulstein X-BOW®, designed for global discovery. The revolutionary design cuts through the swell, offering unrivalled stability on ocean crossings and helping to reduce fuel consumption. It's just one of the many sustainability features that helps us travel more responsibly. Heated Pool, Jacuzzis & Sauna In between landings, enjoy access to the onboard gym or unwind in the sauna. Or head to the back deck to swim in the heated outdoor pool, enjoy a drink at the pool bar, or soak in one of two Jacuzzis, watching the world go by. Leading Technology The Douglas Mawson is at the cutting edge of nautical technology, fitted with industry-leading technology including world-class return-to-port equipment. The ship also features a medical clinic designed for use in remote areas. Built for Adventure The Douglas Mawson features Zodiac access points and an activities platform, making boarding the Zodiacs as quick, efficient and safe as possible, minimising wait times and getting you closer to the action for longer. In our mudroom you will have access to lockers to store gear & boots and rapid drying areas for clothing. More Cabin Choices The Douglas Mawson features 11 different types of cabins, including a range of spacious single berth cabins - all adorned with elegant Nordic interior design features. Multiple Observation Areas As you explore the ship you will find indoor lounge areas with floor-to ceiling windows, and multiple

The Small Cruise Ship Collection

[www.small-cruise-ships.com](http://www.small-cruise-ships.com)

01432 507 280 (within UK)

[info@small-cruise-ships.com](mailto:info@small-cruise-ships.com) | [small-cruise-ships.com](http://small-cruise-ships.com)



## The Small Cruise Ship Collection

[www.small-cruise-ships.com](http://www.small-cruise-ships.com)

[small-cruise-ships.com](http://small-cruise-ships.com)

[info@small-cruise-ships.com](mailto:info@small-cruise-ships.com)

open decks with expansive 270-360 degree views. The Glass Atrium Lounge inside the bow is a fantastic place to sit and watch for wildlife - with a drink in hand. There is no shortage of spaces to take in the majesty of the incredible world outside!

**Lecture Theatre** On all expeditions you will meet naturalists and local specialists, who offer presentations on their area of expertise to enhance your appreciation of the destination you are exploring. Join the team in the lecture theatre for presentations covering a broad range of topics to suit every interest, from history and culture to biology and climate change. Regardless of the topic, they all have one thing in common: they all aim to engage, educate, entertain and turn you into an ambassador for the planet.

**Citizen Science Center & Lounge** Learn more about the world and the unique destinations Aurora visits by visiting the onboard naturalist and Expedition Team in the world-class Citizen Science Center. You will be rewarded for your thirst for knowledge with one of the best views on the ship.

**Library** With floor-to-ceiling windows, the library is a peaceful sanctuary where you can find non-fiction books to read up on the day's destinations, use a public laptop to organise your photos or play board games with newfound friends. Choose from our range of informative non-fiction titles, wildlife guidebooks, travel journals, novels and a selection of children's books and board games. Wildlife guides, books and binoculars can also be found on the observation lounge on Deck 7.

**Mudroom** No need to take your wet expedition gear back to your cabin to dry. Keep your cabin warm and cosy by leaving your outer jackets and pants in the mudroom. The mudroom is your launchpad for all shore excursions and activities. Here, you will have access to a locker when you can hang your gear up to dry, and store your boots between excursions.

**Swimming Pool & Jacuzzis** There are two Jacuzzis on the top outside deck which offer amazing views

of the world outside, a heated outdoor pool surrounded by sun beds you can relax on after a long day of exploring, and a pool bar.

**Gym & Sauna** During your voyage, enjoy complimentary access to the gym or visit our sauna, which we highly recommend after the Polar Plunge!

**Restaurants** One of the most important parts of any expedition is the food! Whatever adventures the day holds, you will be fuelled-up with hearty meals and delicious morning/afternoon teas cooked by our onboard chefs. Meals are a great time to soak up the expedition camaraderie in our open seating dining area. Share stories with your fellow travellers and ask our expedition team questions that may have come up during the day. Tea, coffee and snacks are available 24 hours a day, and our chefs offer different menu options and courses for each meal. Enjoy the range of house wine, beers and soft drinks included with dinner after a long day in the wild. We also invite you to join your captain and expedition team for informal Captain's Farewell drinks, with complimentary beverages and cocktail appetisers, followed by a 3 course meal.

**Bars & Lounges** Communal meeting areas have always played a major role in fostering the warm camaraderie on board our ships. They are the heart of the expedition, where people meet to share tales from the day, swap photos, keep an eye out for wildlife and watch the sun go down. The bars and lounges on board are refined yet inviting places to gather, with floor-to-ceiling windows offering stunning views, and of course friendly bartenders to shoot the

breeze with.

The Small Cruise Ship Collection  
[www.small-cruise-ships.com](http://www.small-cruise-ships.com)

01432 507 280 (within UK)

[info@small-cruise-ships.com](mailto:info@small-cruise-ships.com) | [small-cruise-ships.com](http://small-cruise-ships.com)



# The Small Cruise Ship Collection

[www.small-cruise-ships.com](http://www.small-cruise-ships.com)



[small-cruise-ships.com](http://small-cruise-ships.com)

[info@small-cruise-ships.com](mailto:info@small-cruise-ships.com)

## INSIDE YOUR SHIP

Aurora Stateroom Single



Aurora Stateroom Superior



Aurora Stateroom Superior Single



Aurora Stateroom Triple



Aurora Stateroom Triple Share

Aurora Stateroom Twin

Balcony Stateroom - A

Balcony Stateroom - B

Balcony Stateroom - C

Balcony Stateroom Category A

Balcony Stateroom Category B

Balcony Stateroom Category C

Balcony Stateroom Superior

Captain's Suite

Captain's Suite

Junior Suite



The Small Cruise Ship Collection

[www.small-cruise-ships.com](http://www.small-cruise-ships.com)

**01432 507 280** (within UK)

[info@small-cruise-ships.com](mailto:info@small-cruise-ships.com) | [small-cruise-ships.com](http://small-cruise-ships.com)

# The Small Cruise Ship Collection

www.small-cruise-ships.com

small-cruise-ships.com

info@small-cruise-ships.com

## PRICING

### 01-Feb-2026 to 12-Feb-2026

Balcony Stateroom - C	£16716 GBP pp
Junior Suite	£25916 GBP pp
Balcony Stateroom - A	£18876 GBP pp
Balcony Stateroom - B	£17596 GBP pp
Aurora Stateroom Twin	£15436 GBP pp
Aurora Stateroom Triple	£14956 GBP pp
Captain's Suite	£30796 GBP pp
Balcony Stateroom Superior	£20636 GBP pp

### 17-Mar-2026 to 28-Mar-2026

Captain's Suite	£29436 GBP pp
Aurora Stateroom Superior	£15596 GBP pp
Balcony Stateroom Superior	£19756 GBP pp
Balcony Stateroom Category A	£18076 GBP pp
Junior Suite	£24796 GBP pp
Balcony Stateroom Category B	£16796 GBP pp
Aurora Stateroom Triple Share	£14316 GBP pp
Balcony Stateroom Category C	£15996 GBP pp

### 20-Jan-2027 to 31-Jan-2027

Aurora Stateroom Triple	£16316 GBP pp
Captain's Suite	£30716 GBP pp
Junior Suite	£26876 GBP pp
Balcony Stateroom Superior	£22556 GBP pp
Aurora Stateroom Superior Single	£21596 GBP pp
Aurora Stateroom Superior	£17756 GBP pp
Aurora Stateroom Twin	£16796 GBP pp
Balcony Stateroom Category A	£20636 GBP pp
Aurora Stateroom Single	£19676 GBP pp
Balcony Stateroom Category B	£19196 GBP pp
Balcony Stateroom Category C	£18236 GBP pp