



## The Small Cruise Ship Collection

[www.small-cruise-ships.com](http://www.small-cruise-ships.com)

[small-cruise-ships.com](http://small-cruise-ships.com)

[info@small-cruise-ships.com](mailto:info@small-cruise-ships.com)

## ANTARCTIC EXPEDITION CRUISE INCLUDING SOUTH GEORGIA AND THE FALKLANDS

Over 23 incredible days, you will explore and experience the very best of Antarctica, including the Antarctic Peninsula, South Georgia, and the Falkland Islands, with the added opportunity to visit Elephant Island. This is a journey with an exclusive focus on exploration, enjoyed in the most unhurried manner, made possible by a maximum group size of just 66 passengers - almost a third of the size of a typical expedition ship in today's market! Therefore, in February 2025, join Ushuaia for a once-in-a-lifetime opportunity and be a part of this fantastic Antarctic expedition cruise! On every full expedition day, you can expect two off-ship excursions, weather permitting, each lasting up to three hours. Every cruise carries eight Zodiacs, which are used to disembark everyone quickly, together and without the need for separate groups. Once on land, there will be a variety of activities designed to make the most of that particular location and all your time ashore. Plus, you'll be accompanied by five expert expedition staff including a fantastic expedition leader, as well as two very special guests, providing unrivalled access to experts who will bring the destination to life. Originally built for the United States agency NOAA (National Oceanic & Atmospheric Administration), the ice-strengthened polar vessel MV Ushuaia is a much-loved, veteran expedition ship that has crossed the Drake Passage over 600 times and counting! This year, an extensive refurbishment has been done, and the ship has truly never looked better! With ample deck space and an open bridge policy, there will always be a great spot from which you can view the incredible scenery and wildlife without jostling for position. You'll also be able to enjoy a range of excellent facilities that will offer you a comfortable home away

from home.

### ITINERARY

4th February 2025: Welcome to Buenos Aires

You can arrive in Buenos Aires at any time today, and upon arrival, you will be transferred to check-in at our hotel for the night. The rest of the day is free for you to explore the vibrant capital city of Argentina.

5th February 2025: Depart Ushuaia

It will be an early start this morning for a group transfer to the airport, for our flight to Ushuaia. Upon arrival in Ushuaia, we will transfer to the port to board the MV Ushuaia. You'll be checked into your cabin, and after some time to settle in and complete the necessary safety briefings, we will set sail and begin our journey by sailing through the beautiful Beagle Channel.

6th - 7th February 2025: Drake Passage

Our first two days sailing will be spent crossing the infamous Drake Passage. There will be a programme of briefings and lectures by the expedition crew to get you ready for the expedition ahead! Out on deck, it's a good opportunity to spot wandering albatross and maybe some whales.

The Small Cruise Ship Collection

[www.small-cruise-ships.com](http://www.small-cruise-ships.com)

01432 507 280 (within UK)

[info@small-cruise-ships.com](mailto:info@small-cruise-ships.com) | [small-cruise-ships.com](http://small-cruise-ships.com)



# The Small Cruise Ship Collection

[www.small-cruise-ships.com](http://www.small-cruise-ships.com)

[small-cruise-ships.com](http://small-cruise-ships.com)

[info@small-cruise-ships.com](mailto:info@small-cruise-ships.com)

8th - 11th February 2025: Antarctica Peninsula

After much anticipation, we will arrive in Antarctica and spend the next four days exploring the western side of the Peninsula. We will drop anchor in remote bays framed by icy mountains and explore key wildlife spots. You'll encounter gentoo, adelic and chinstrap penguin rookeries up close, while the nutrientrich seas are home to an abundance of wildlife, including leopard, crabeater, Weddell, and elephant seals, and orcas, minke, and humpback whales. Expect plenty of walks, wildlife observation, Zodiac rides, and, for the foolhardy, perhaps even the opportunity to take the polar plunge! If the opportunity arises, it may also be possible to visit historical sites or a scientific research station. Along the way, our expedition team will bring the destination to life and offer unique insights into what we are seeing.

12th February 2025: Last Antarctic Landing, Then Retracing Shackleton's Route to Elephant Island

This morning there should be time for one final landing for you to enjoy before we depart the Antarctic Peninsula. In the afternoon, while at sea, we'll bring to life the story of one of the greatest Antarctic explorers, Sir Ernest Shackleton. The Imperial Trans-Antarctica expedition of 1914 ran into problems in the Weddell Sea area of Antarctica with their ship, the Endurance, becoming trapped and crushed by ice. They survived on the ship, and then on the ice, for 14 months before finally making

their escape aboard three 20-foot lifeboats. The first part of their escape saw Shackleton and 28 men sail to Elephant Island, and we'll be sailing in their wake!

13th February 2025: Elephant Island

Today we hope to see a key part of Shackleton's great story and a place not often visited by expedition ships, Elephant Island. It's an atmospheric place, brutally exposed to the elements and probably not the welcoming refuge Shackleton and his men were looking for! It is always a challenge visiting Elephant Island, and we will do our very best to make the most of this opportunity, with the conditions presented to us on the day.

14th - 15th February: Retracing Shackleton's Route to South Georgia

For the next two days, we will sail across the open seas on our way to South Georgia and retrace the path sailed by five of Shackleton's men aboard the lifeboat, James Caird. There will be a programme of lectures, including further insight into the Great Polar Explorers of Antarctica, as well as some briefings to get you ready for the upcoming landings in South Georgia!

16th February 2025: King Haakon Bay, South Georgia

This morning we will sail the last nautical miles of Shackleton's great journey to South Georgia. In the afternoon, it is our intention to sail into King Haakon Bay and make a landing at Pegotty Bluff, which is where Shackleton and his five men first landed after 17 days sailing from Elephant Island. It will be our

The Small Cruise Ship Collection  
[www.small-cruise-ships.com](http://www.small-cruise-ships.com)

01432 507 280 (within UK)

[info@small-cruise-ships.com](mailto:info@small-cruise-ships.com) | [small-cruise-ships.com](http://small-cruise-ships.com)



# The Small Cruise Ship Collection

[www.small-cruise-ships.com](http://www.small-cruise-ships.com)

[small-cruise-ships.com](http://small-cruise-ships.com)

[info@small-cruise-ships.com](mailto:info@small-cruise-ships.com)

first introduction to South Georgia's amazing scenery and the local resident King Penguins!

17th - 19th February: South Georgia

South Georgia is always one of the highlights of any cruise to the Antarctic region. Sometimes referred to as the "Galapagos of the Poles," the island is home to massive king penguin colonies, including Salisbury Plain, which is home to over 50,000 breeding penguins! But the wildlife doesn't stop there; you'll also have the possibility to see numerous fur and elephant seals, gentoo and macaroni penguins, and large numbers of seabirds, some of which can't be seen anywhere else on the planet! The island is also home to Grytviken, which is an old whaling station, the administrative capital of the island, and the resting place of Ernest Shackleton himself. We'll have the opportunity to join in the long-held tradition of raising a glass of his favourite drink - a scotch whiskey - by his grave.

20th - 22nd February: South Georgia to the Falkland Islands

On the morning of the 20th, there should be time for one final landing in South Georgia before we chart our course towards the Falkland Islands in the afternoon. While we are at sea, there will be a programme of lectures and opportunities out on deck to spot wandering albatross and maybe some whales or pods of travelling dolphins.

20th - 22nd February: South Georgia to the Falkland Islands

On the morning of the 20th, there should be time for one final landing in South Georgia before we chart our course towards the Falkland Islands in the afternoon. While we are at sea, there will be a programme of lectures and opportunities out on deck to spot wandering albatross and maybe some whales or pods of travelling dolphins.

23rd - 24th February 2025: Falkland Islands

Our first day in the Falklands will be at Port Stanley, the capital of the Falkland Islands. About 2,500 islanders live here (70% of the population of The Falklands), and you'll find a slice of British life to enjoy. Today is a free day to self-explore the town, enjoy lunch at one of the local pubs, or visit the cathedral and museum. Around a 4-mile walk (or taxi ride) away is Gypsy Cove, where there is a Magellanic penguin colony and the chance to see a lot of other Falklands wildlife.

Our second day in the Falkland Islands will see us make landings in the Western region of the archipelago. Your camera will get one last workout capturing the abundant wildlife and rugged landscape of this sub-Antarctic region.

25th February 2025: Sailing to Ushuaia

We will say goodbye to the Falkland Islands and head back towards where it all began. On the final evening, there will be a farewell dinner, followed by a presentation of photos taken during the trip.

The Small Cruise Ship Collection

[www.small-cruise-ships.com](http://www.small-cruise-ships.com)

01432 507 280 (within UK)

[info@small-cruise-ships.com](mailto:info@small-cruise-ships.com) | [small-cruise-ships.com](http://small-cruise-ships.com)



26th February 2025: Disembark in Ushuaia – Buenos Aires

This morning we will say goodbye to the crew of the MV Ushuaia after breakfast. There will be time available to explore Ushuaia before our afternoon flight back to Buenos Aires, or alternatively, you can join an optional excursion to the nearby Tierra del Fuego National Park (not included). Our services will end upon arrival at Buenos Aires Domestic airport where our local guides will be available to assist with onward taxi transport. For anyone wishing to travel from the international airport today, we would not recommend booking any flights prior to 9 pm. We can also book a final night in Buenos Aires for you if you would prefer (not included).

# The Small Cruise Ship Collection

[www.small-cruise-ships.com](http://www.small-cruise-ships.com)

[small-cruise-ships.com](http://small-cruise-ships.com)

[info@small-cruise-ships.com](mailto:info@small-cruise-ships.com)

## YOUR SHIP: USHUAIA

**YOUR SHIP:** Ushuaia

**VESSEL TYPE:**

**LENGTH:**

**PASSENGER CAPACITY:**

**BUILT/REFURBISHED:**

Originally built for the United States agency NOAA (National Oceanic & Atmospheric Administration), the MV USHUAIA has been refurbished to accommodate a maximum of 84 passengers in 41 comfortable twin cabins and suites. The ice-strengthened polar vessel MV USHUAIA is very well appointed and provides ample deck space and an open bridge policy. The full complement of inflatable landing craft ensures superb landings and wildlife viewing opportunities on the otherwise inaccessible coastline. All cabins include ample storage space. Public areas feature a large dining room (one sitting), an observation lounge and bar, a conference room with modern multimedia equipment, a well-stocked library, a changing room and a small infirmary. Our expert captain, officers and crew are highly experienced in Antarctic navigation and have a great love of nature. We provide a specialist team of international expedition leaders and lecturers, all extremely knowledgeable, enthusiastic, helpful and dedicated to the protection of the environment. Our chefs prepare excellent cuisine including many local specialties and the bar is well-stocked with carefully selected wines and spirits.



The Small Cruise Ship Collection  
[www.small-cruise-ships.com](http://www.small-cruise-ships.com)

01432 507 280 (within UK)

[info@small-cruise-ships.com](mailto:info@small-cruise-ships.com) | [small-cruise-ships.com](http://small-cruise-ships.com)

# The Small Cruise Ship Collection

www.small-cruise-ships.com

small-cruise-ships.com

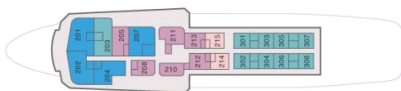
info@small-cruise-ships.com

## INSIDE YOUR SHIP

Bridge Deck H

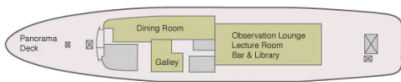


Upper Deck G



- 4 Suites
- 6 Premier twin private cabins
- 2 Premier single private cabins
- 9 Superior twin private cabins

Main Deck F



Deck E



- 10 Standard twin semi-private cabins
- 11 Standard Plus twin private cabins
- Changing room
- 2 Standard Plus triple private cabins

Captain's Suite Cat H



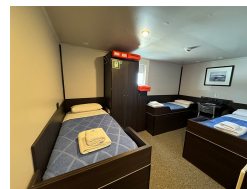
Premier Twin Cat D



Solo bunk cabin Cat D



Standard Plus Triple Cat A



Standard Plus Twin Cat C  
Suite Cat G

Standard Twin Cat B  
Twin Deluxe Cat E



# The Small Cruise Ship Collection

[www.small-cruise-ships.com](http://www.small-cruise-ships.com)



[small-cruise-ships.com](http://small-cruise-ships.com)

[info@small-cruise-ships.com](mailto:info@small-cruise-ships.com)

## PRICING

04-Feb-2025 to 26-Feb-2025

Captain's Suite Cat H	£23099 GBP pp
Suite Cat G	£22099 GBP pp
Twin Deluxe Cat E	£19999 GBP pp
Premier Twin Cat D	£17999 GBP pp
Solo bunk cabin Cat D	£17999 GBP pp
Standard Plus Twin Cat C	£16999 GBP pp
Standard Twin Cat B	£15999 GBP pp
Standard Plus Triple Cat A	£14999 GBP pp